



## Haverstock Hill, Belsize Park, London, NW3 .| £475

- Two Bed, One Bath
- Top Floor Apartment
- In the Heart of Belsize Park
- Light and Airy

- Excellent Transport Links
- Available Now

"Vita Properties have been tremendously helpful throughout the process of securing/renting my flat. Informative about the property, prompt communication, easy to use dashboard for sharing of information, and pleasant to work with. Highly recommend!"

Available Now & move in with no tenant fee's - Presenting this homely 880 sq ft two bed, top floor apartment in Belsize Park, NW3.

Comprising of a bright and spacious reception room with dining area featuring an original fireplace, a fully integrated kitchen with breakfast bar, large master bedroom, separate double bedroom with built in wardrobes and a large family bathroom. The property features gorgeous hardwood flooring and spot lighting throughout.

Located within the heart of Belsize Park and less than a 2 minute walk from Belsize Park Underground (Northern Line) and all the amenities of Haverstock Hill.



Offered unfurnished




Oliver Kent

✉ [oliver.kent@vitaproperties.uk](mailto:oliver.kent@vitaproperties.uk)  
☎ +4477 7274 0351






Flat  
Under  
Negotiation



x 2  
x 1



x 1



"I was very impressed with Vita and their network of buyers. When the sale of my flat fell through (twice) they worked extremely hard to find new buyers in a difficult market - thank you!"

---



"Working with Vita properties has been a smooth experience! No complaints at all. Our letting agent, Diana has been fantastic and very helpful throughout the whole process. I would highly recommend both Vita properties and Diana."

---





"I used Vita properties to find a flat recently and it was an overall professional, personalised and positive experience. Saira went the extra mile to accommodate to our needs and quick to help us whenever possible."

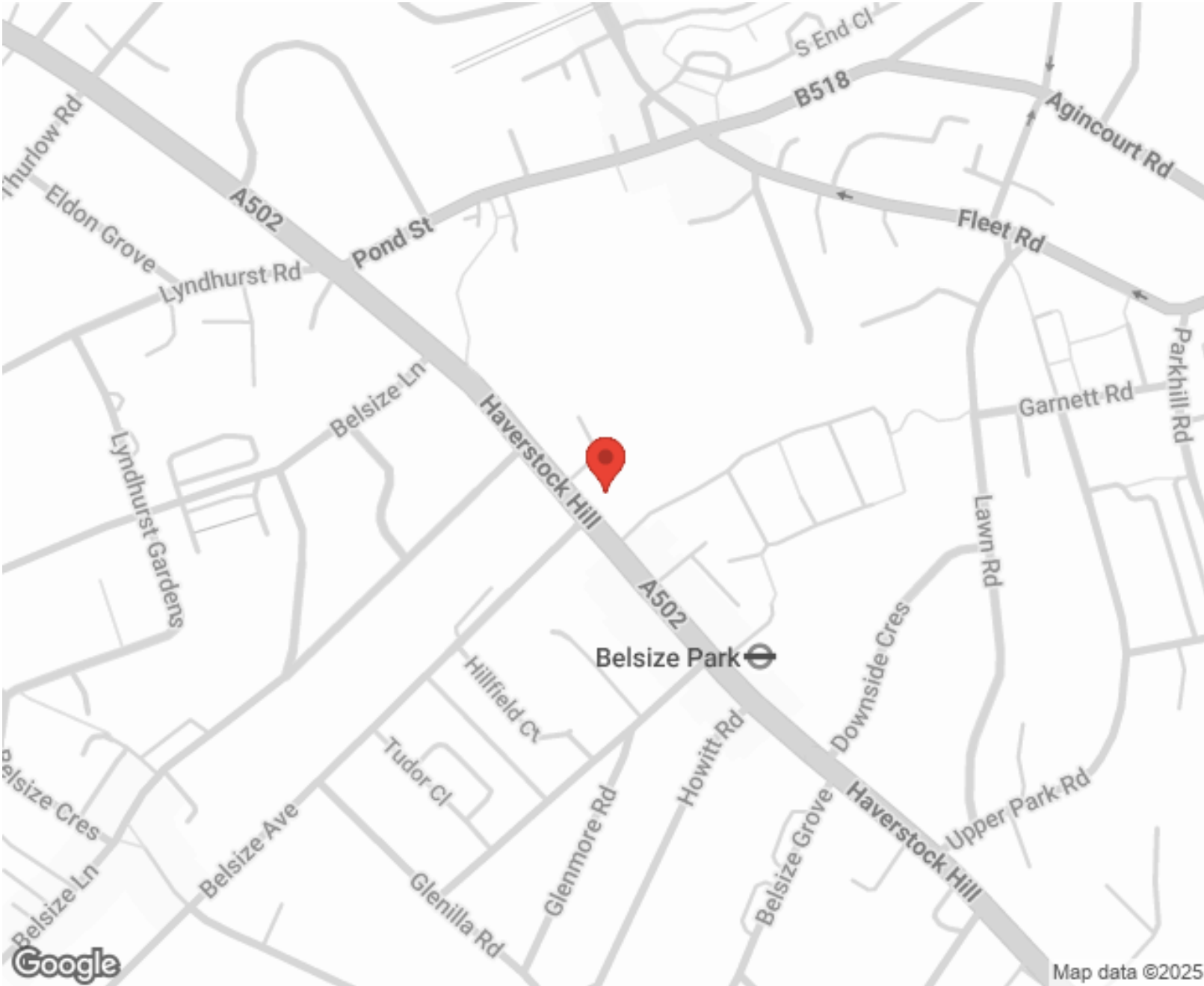
---



**MORE INFO, PICTURES,  
CONTACT ON  
OUR WEBSITE**



"Vita Properties is a very professional agency. My experience with them was incredible and the entire team was very helpful and kind throughout the renting process. I'd highly recommend!"



Energy Efficiency Rating			Environmental Impact (CO <sub>2</sub> ) Rating		
	Current	Potential		Current	Potential
Very energy efficient - lower running costs			Very environmentally friendly - lower CO <sub>2</sub> emissions		
(92-100) A			(92-100) A		
(81-91) B			(81-91) B		
(69-80) C			(69-80) C		
(55-68) D			(55-68) D		
(39-54) E			(39-54) E		
(21-38) F			(21-38) F		
(1-20) G			(1-20) G		
Not energy efficient - higher running costs			Not environmentally friendly - higher CO <sub>2</sub> emissions		
England, Scotland & Wales			England, Scotland & Wales		
EU Directive			EU Directive		

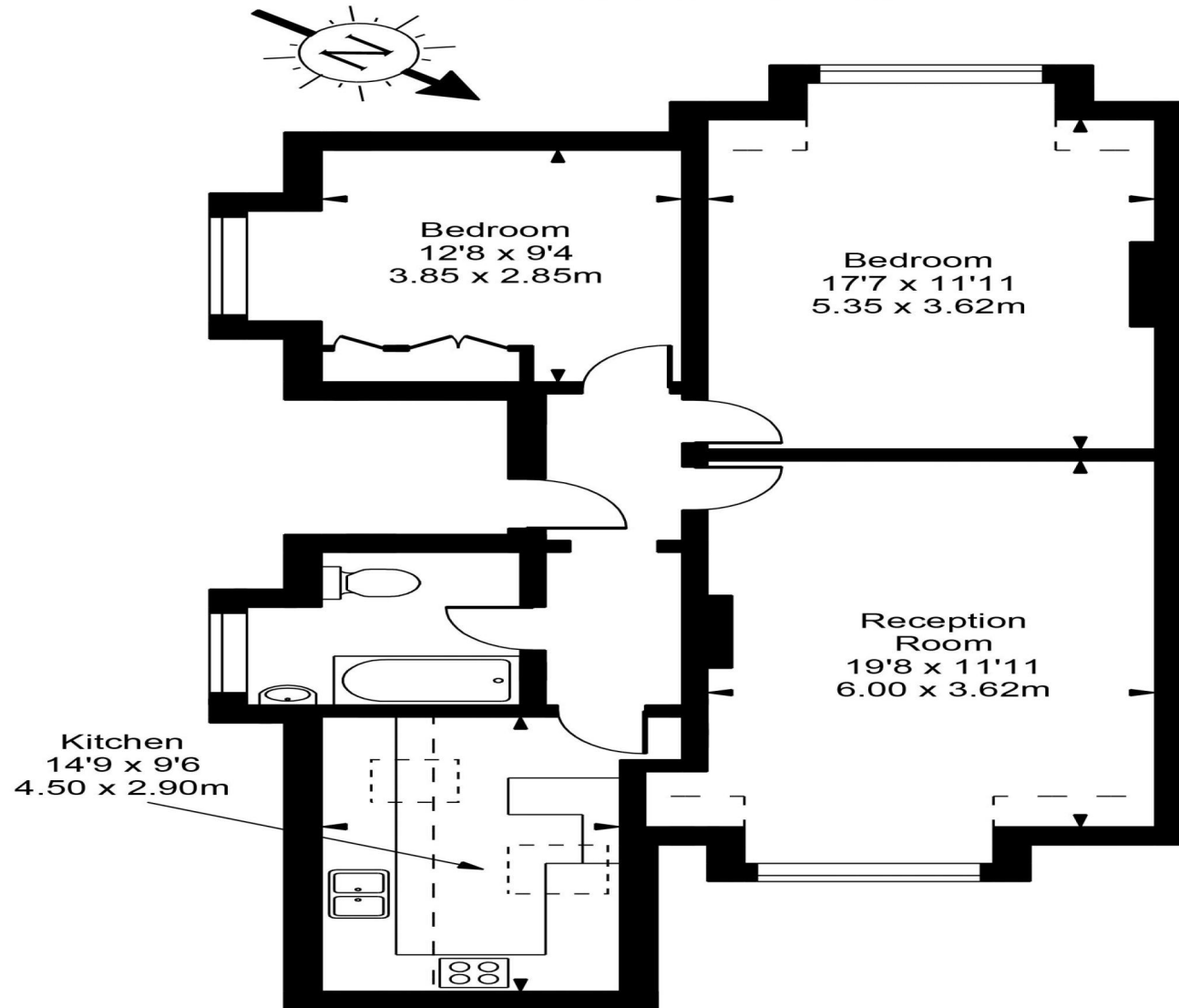
SCAN FOR MORE  
GOOGLE REVIEWS

Google  
★★★★★  
4.9 Stars | 132 Reviews

Find us on social media

vitaproperties  
 VitaProperties  
 VitaProperties

# Haverstock Hill



**Approx Gross Internal Area      883 Sq Ft - 82.03 Sq M**

FOR ILLUSTRATIVE PURPOSES ONLY. NOT TO SCALE.

Whilst every attempt has been made to ensure the accuracy of the floorplan shown, all measurements, positioning, fixtures, fittings and any other data shown are an approximate interpretation for illustrative purposes only and are not to scale. No responsibility is taken for any error, omission, misstatement or use of data shown.  
Floor plan by [www.bestangle.co.uk](http://www.bestangle.co.uk)