



Sandwell Mansions, West End Lane, West Hampstead, London, NW6 | £1,300,000

- A three/four bedroom versatile apartment
- Set in the most prominent part of West Hampstead
- Refurbished throughout
- Acoustic soundproofed double glazed windows
- Original feature fireplace and decorative cornicing
- Offered chain free

"Vita Properties have been tremendously helpful throughout the process of securing/renting my flat. Informative about the property, prompt communication, easy to use dashboard for sharing of information, and pleasant to work with. Highly recommend!"

Set in the most prominent part of West Hampstead is this fully modernised, interior designed exquisite 3 / 4 bed apartment – designed with families in mind and with excellent transport links (over ground, jubilee & Thameslink) as well as a vast array of local amenities on your doorstep. This 1350 sq ft versatile apartment can be used either as a 3 bed with 2 reception rooms, or a 4 bed with 1 reception room. The main living room is beautifully presented with wood floors, gorgeous bay windows, original feature fireplace and decorative cornicing to the walls. The second reception (or 4th bedroom) boasts stunning ceiling cornicing and bay windows. The separate kitchen / diner is stylish in its rustic design (Schmitt German kitchen) – boasting a large island counter with breakfast bar, double oven, double stainless-steel fridge and freezer and a wealth of cupboard space. There are two double bedrooms – both with built in wardrobes – and with the master boasting access to a trendy en-suite shower room with “his and her sinks”. The third bedroom is a large single bedro

o boasting built-in wardrobes. Finally, you have the large family bathroom with walk-in shower. This apartment boasts several unique benefits including acoustic soundproofed double glazed windows throughout, underfloor heating, impeccably high ceilings and some very cleverly implemented storage solutions. The recent refurb and the flawless attention to detail really does set this gorgeous family home apart from the rest and it really does need to be seen to be truly appreciated.

- 🏠 Flat
- 🔑
- 🛏 x 3
- 🛋 x 2
- 🚿 x 2

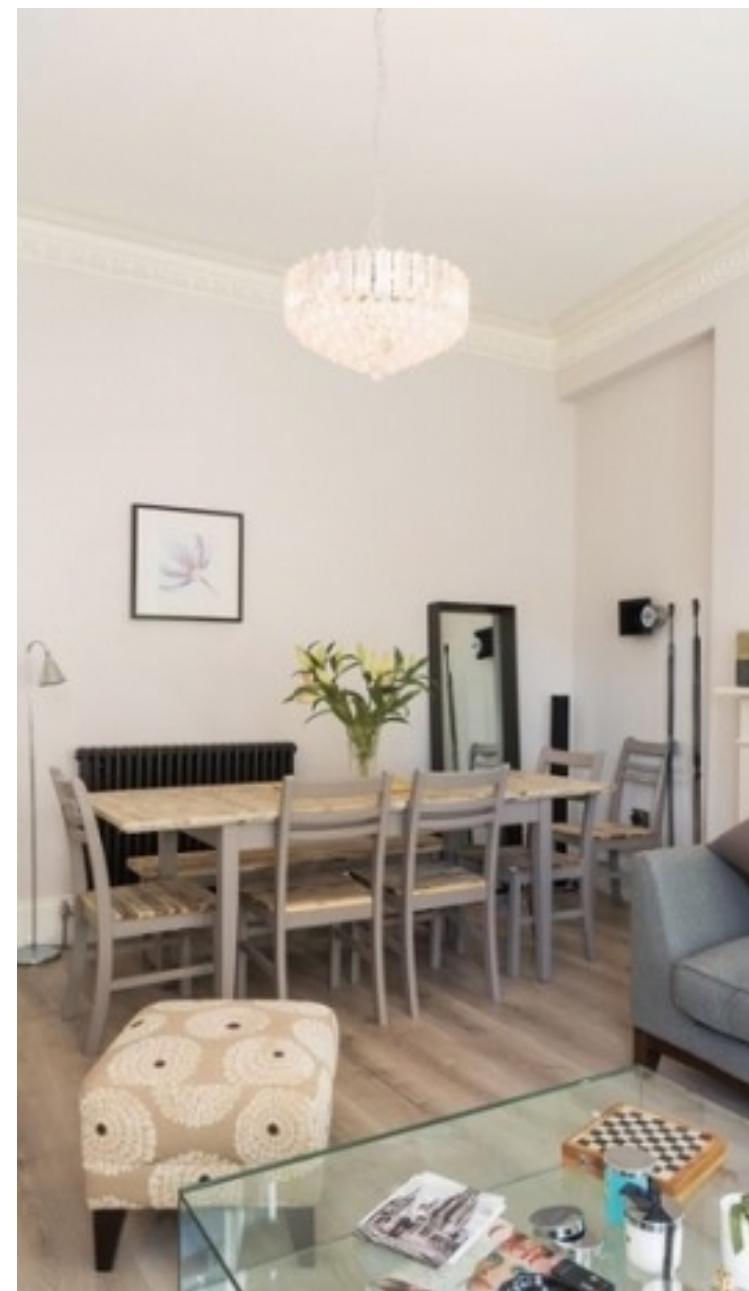


Oliver Kent

✉ oliver.kent@vitaproperties.uk
☎ +4477 7274 0351



"I was very impressed with Vita and their network of buyers. When the sale of my flat fell through (twice) they worked extremely hard to find new buyers in a difficult market - thank you!"



"Working with Vita properties has been a smooth experience! No complaints at all. Our letting agent, Diana has been fantastic and very helpful throughout the whole process. I would highly recommend both Vita properties and Diana."



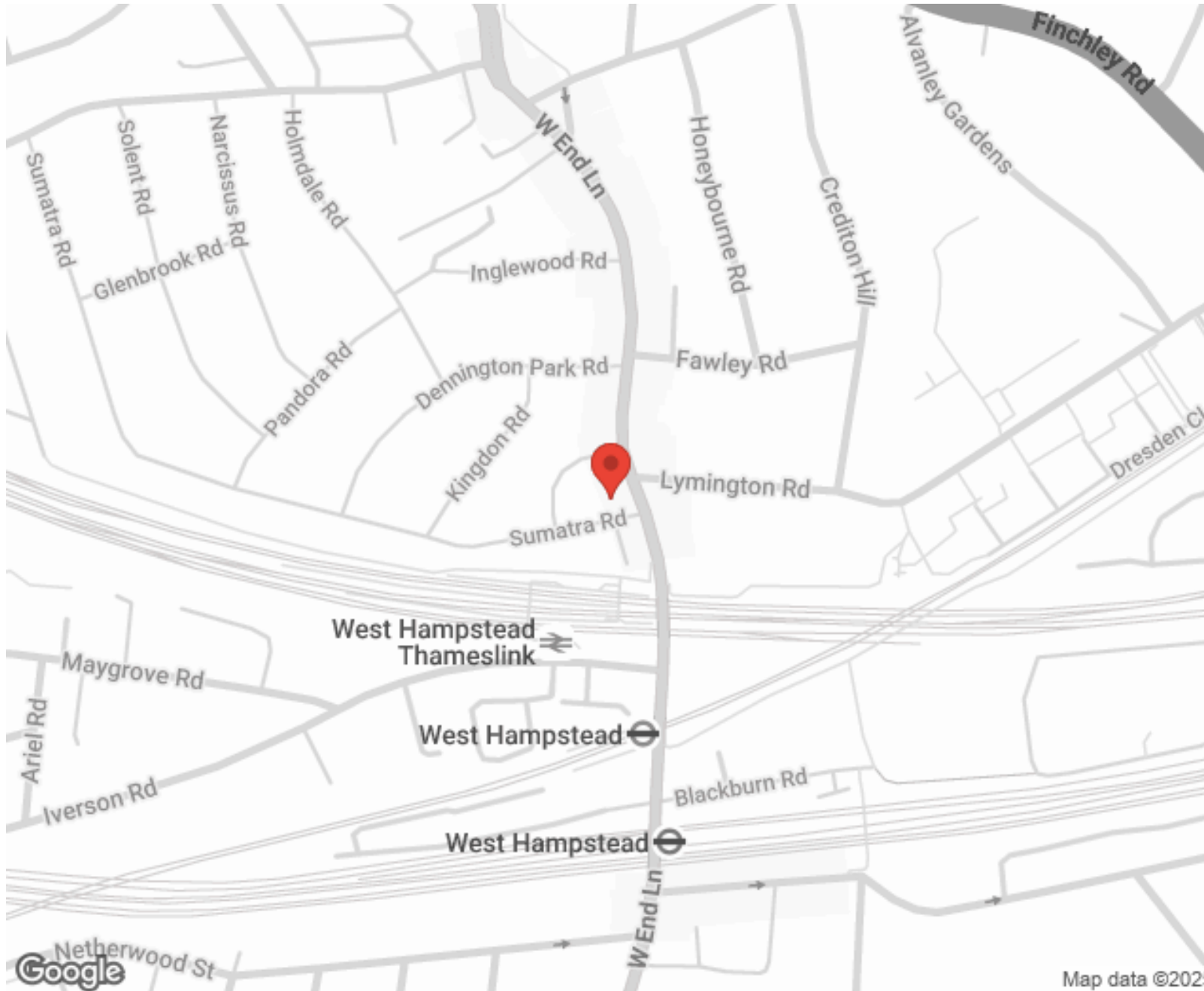
"I used Vita properties to find a flat recently and it was an overall professional, personalised and positive experience. Saira went the extra mile to accommodate to our needs and quick to help us whenever possible."



**MORE INFO, PICTURES,
CONTACT ON
OUR WEBSITE**



"Vita Properties is a very professional agency. My experience with them was incredible and the entire team was very helpful and kind throughout the renting process. I'd highly recommend!"



SCAN FOR MORE
GOOGLE REVIEWS



Google




4.9 Stars | 132 Reviews

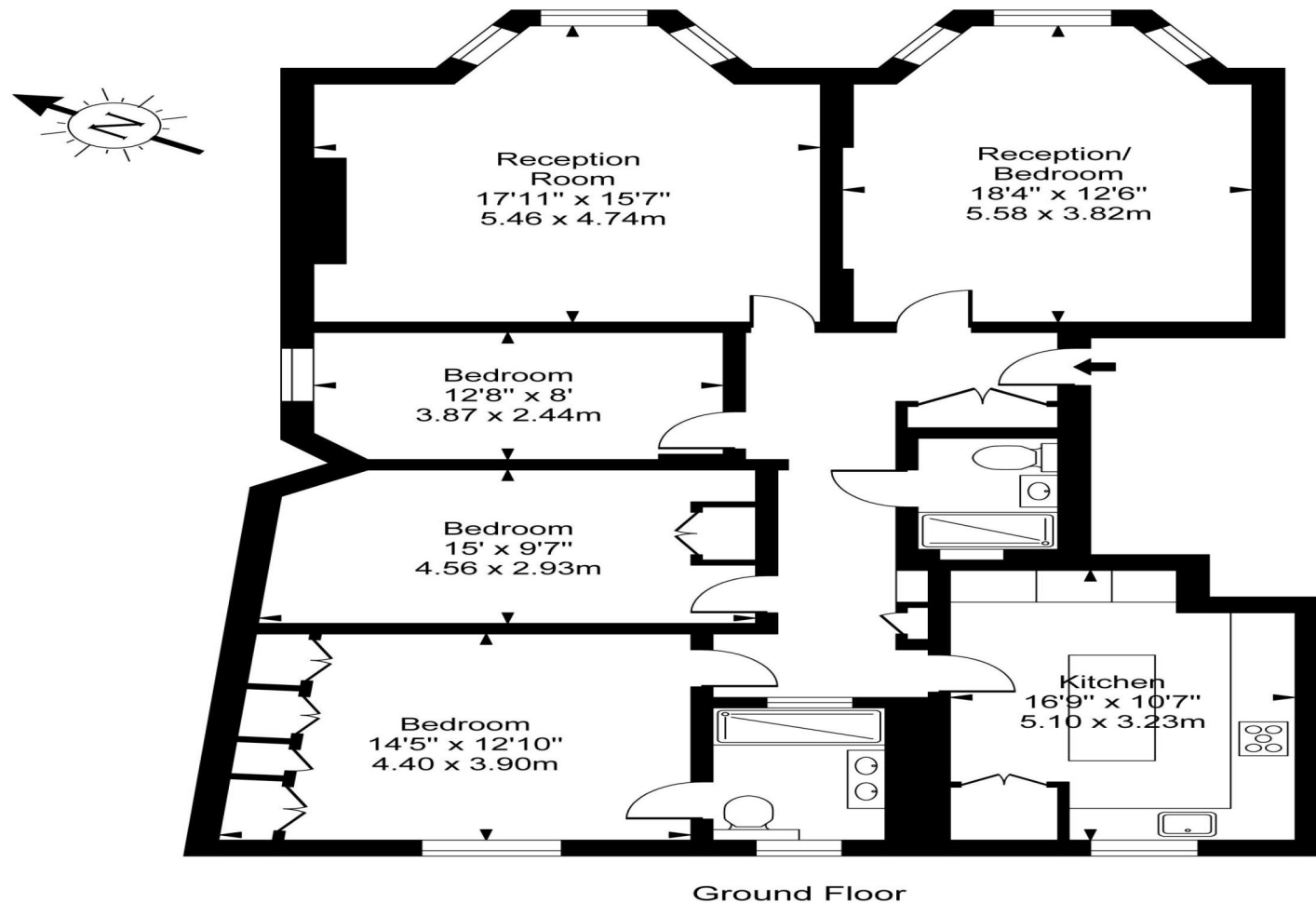
Find us on social media

 vitaproperties

 VitaProperties

 VitaProperties

Sandwell Mansions, NW6



Approx Gross Internal Area

1347 Sq Ft - 125.19 Sq M

For Illustration Purposes Only - Not To Scale Floor Plan by www.nogaphotostudio.com Ref: No.38632

This floor plan should be used as a general outline for guidance only. Any intending purchaser or lessee should satisfy themselves by inspection, searches, enquiries and full survey as to the correctness of each statement. Any areas, measurements or distances quoted are approximate and should not be used to value a property or be the basis of any sale or let.