



Balfour Place, Mayfair, London, W1. | £1,375

- Located in the heart of Mayfair
- Lift
- Stylishly furnished and extends to 1027 sq.ft. (95.4 sq.m)
- A moments walk from the open spaces of Hyde Park and the shops, restaurants and designer boutiques

- Available 20th April 2019

"Vita Properties have been tremendously helpful throughout the process of securing/renting my flat. Informative about the property, prompt communication, easy to use dashboard for sharing of information, and pleasant to work with. Highly recommend!"

A superb, recently refurbished, first floor two bed flat has just come onto the market in the heart of prime Mayfair. It comprises one large open plan reception and dining room overlooking Balfour Place, a master bedroom with an en suite bath/WC and a further separate shower/WC adjacent to the second bedroom, with fully equipped kitchen. It is a few minutes walk from Hyde Park and Grosvenor Square. Immaculately and stylishly furnished throughout. Centrally heated.



Oliver Kent

✉ oliver.kent@vitaproperties.uk
☎ +4477 7274 0351



🏠 Flat
🔑 Available
to Let
🛏 x 2
🛋 x 1
🚿 x 2

"I was very impressed with Vita and their network of buyers. When the sale of my flat fell through (twice) they worked extremely hard to find new buyers in a difficult market - thank you!"



"Working with Vita properties has been a smooth experience! No complaints at all. Our letting agent, Diana has been fantastic and very helpful throughout the whole process. I would highly recommend both Vita properties and Diana."



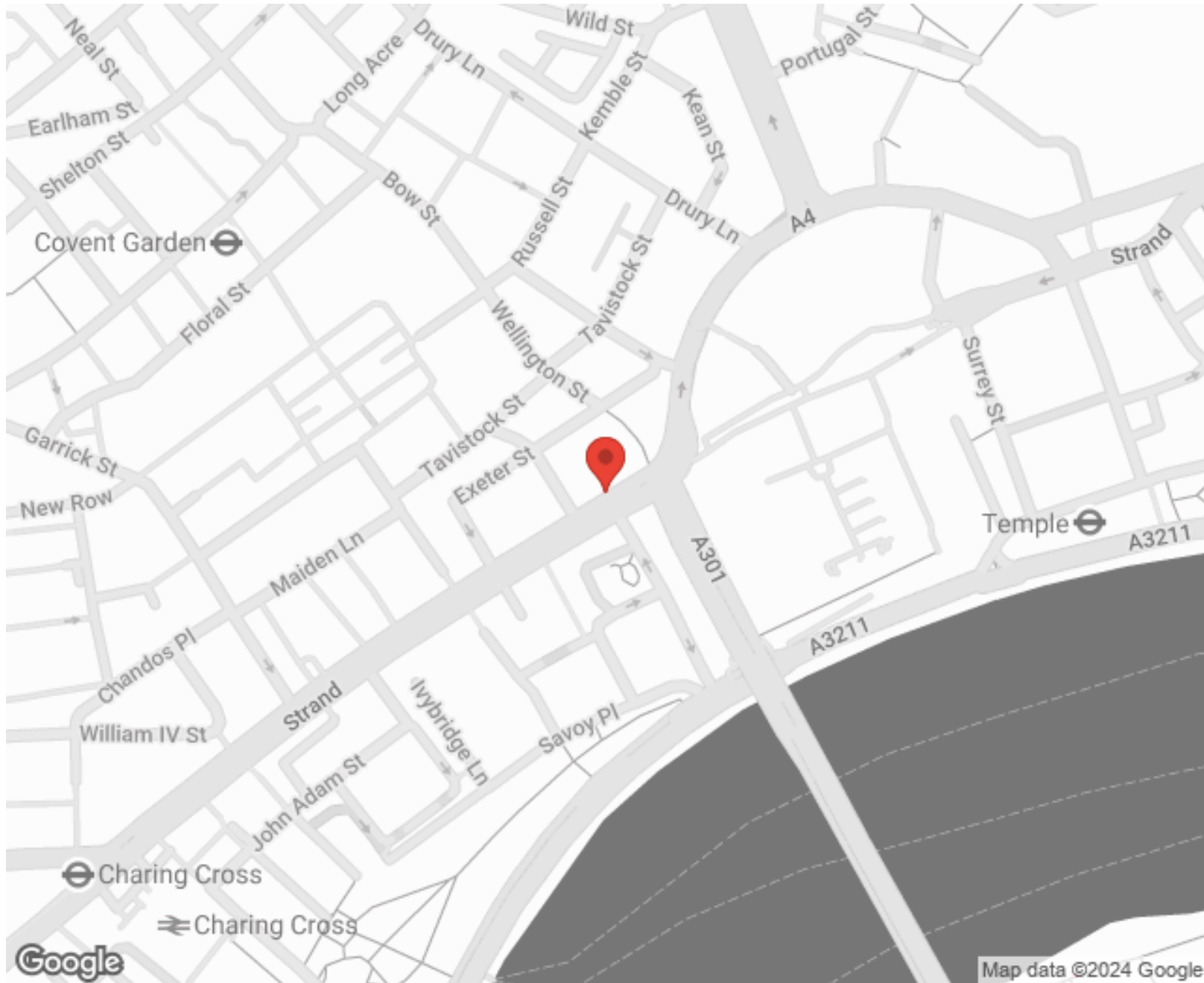
"I used Vita properties to find a flat recently and it was an overall professional, personalised and positive experience. Saira went the extra mile to accommodate to our needs and quick to help us whenever possible."



**MORE INFO, PICTURES,
CONTACT ON
OUR WEBSITE**



"Vita Properties is a very professional agency. My experience with them was incredible and the entire team was very helpful and kind throughout the renting process. I'd highly recommend!"



SCAN FOR MORE
GOOGLE REVIEWS



Google




4.9 Stars | 132 Reviews

Find us on social media

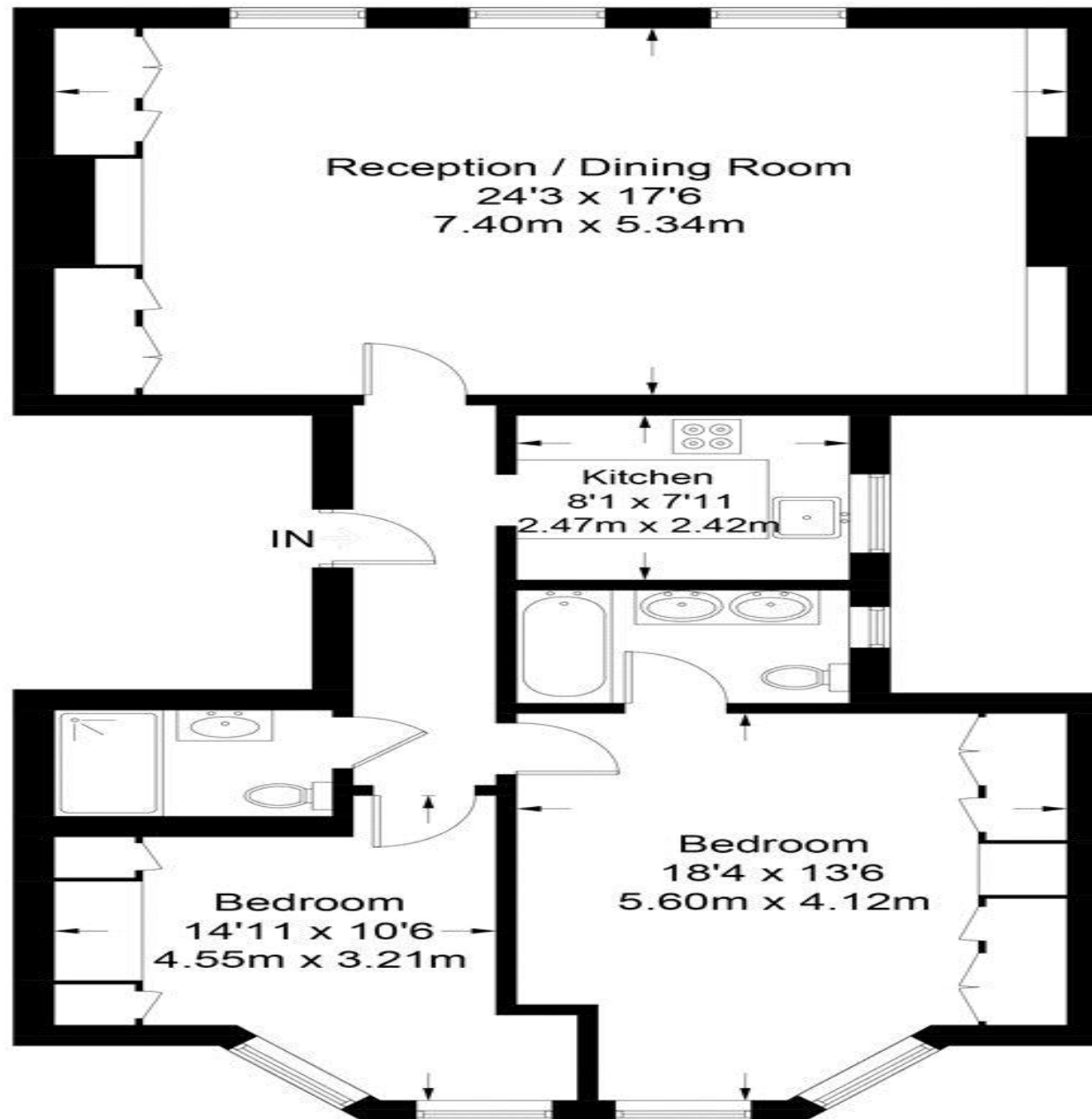
 vitaproperties

 VitaProperties

 VitaProperties

Balfour Place

Approximate Gross Internal Area = 1027 sq ft / 95.4 sq m



Not to scale, for guidance only and must not be relied upon as a statement of fact.
All measurements and areas are approximate only and have been prepared in
accordance with the current edition of the RICS Code of Measuring Practice.