



Brooks Mews, Mayfair, London, W1K .| £1,200

- Balcony
- Lift
- Central Location
- Recently Refurbished

- Located by Bond Street tube and Oxford Street
- 2 Bathrooms
- Entry Phone

"Vita Properties have been tremendously helpful throughout the process of securing/renting my flat. Informative about the property, prompt communication, easy to use dashboard for sharing of information, and pleasant to work with. Highly recommend!"

Available 11 March 2019 - A top floor flat with lift in a fantastic location just behind Claridge's Hotel. Accommodation offers a large lateral area, two double bedrooms, two bathrooms one ensuite, and a bright and airy reception room with semi separate kitchen. The flat has just undergone redecorating and the interior is fresh and modern. The property further benefits from a balcony overlooking the courtyard at Claridge's. Conveniently located close to Regents Street, and within walking distance to Bond Street Underground Station.



Oliver Kent

✉ oliver.kent@vitaproperties.uk
☎ +4477 7274 0351



🏠 Flat
🔑 Available
to Let
🛏 x 2
🛏 x 1
🚿 x 2



"I was very impressed with Vita and their network of buyers. When the sale of my flat fell through (twice) they worked extremely hard to find new buyers in a difficult market - thank you!"



"Working with Vita properties has been a smooth experience! No complaints at all. Our letting agent, Diana has been fantastic and very helpful throughout the whole process. I would highly recommend both Vita properties and Diana."



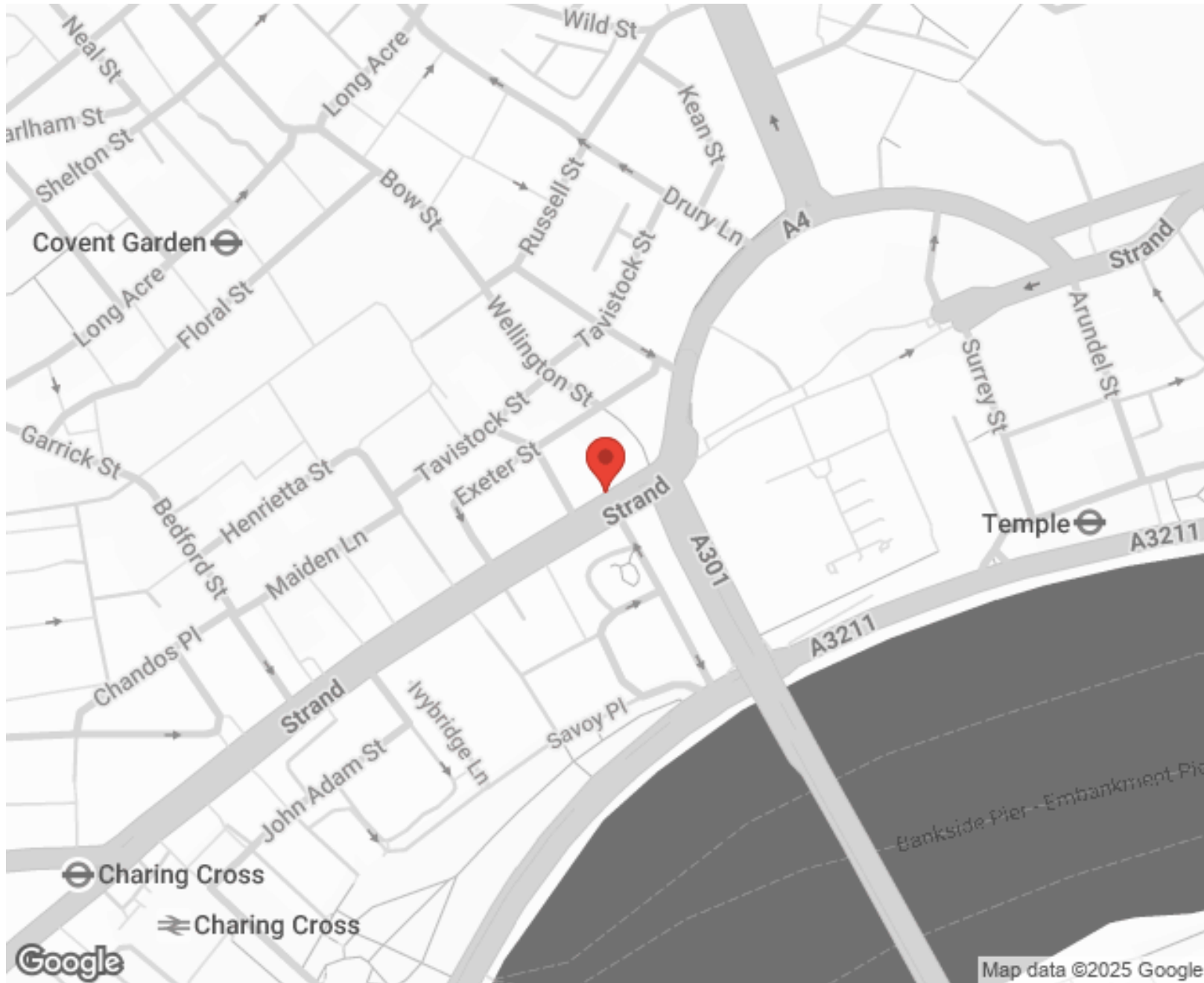
"I used Vita properties to find a flat recently and it was an overall professional, personalised and positive experience. Saira went the extra mile to accommodate to our needs and quick to help us whenever possible."



**MORE INFO, PICTURES,
CONTACT ON
OUR WEBSITE**



"Vita Properties is a very professional agency. My experience with them was incredible and the entire team was very helpful and kind throughout the renting process. I'd highly recommend!"



SCAN FOR MORE
GOOGLE REVIEWS

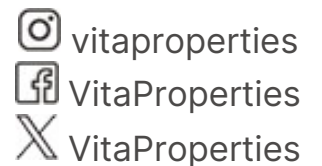


Google

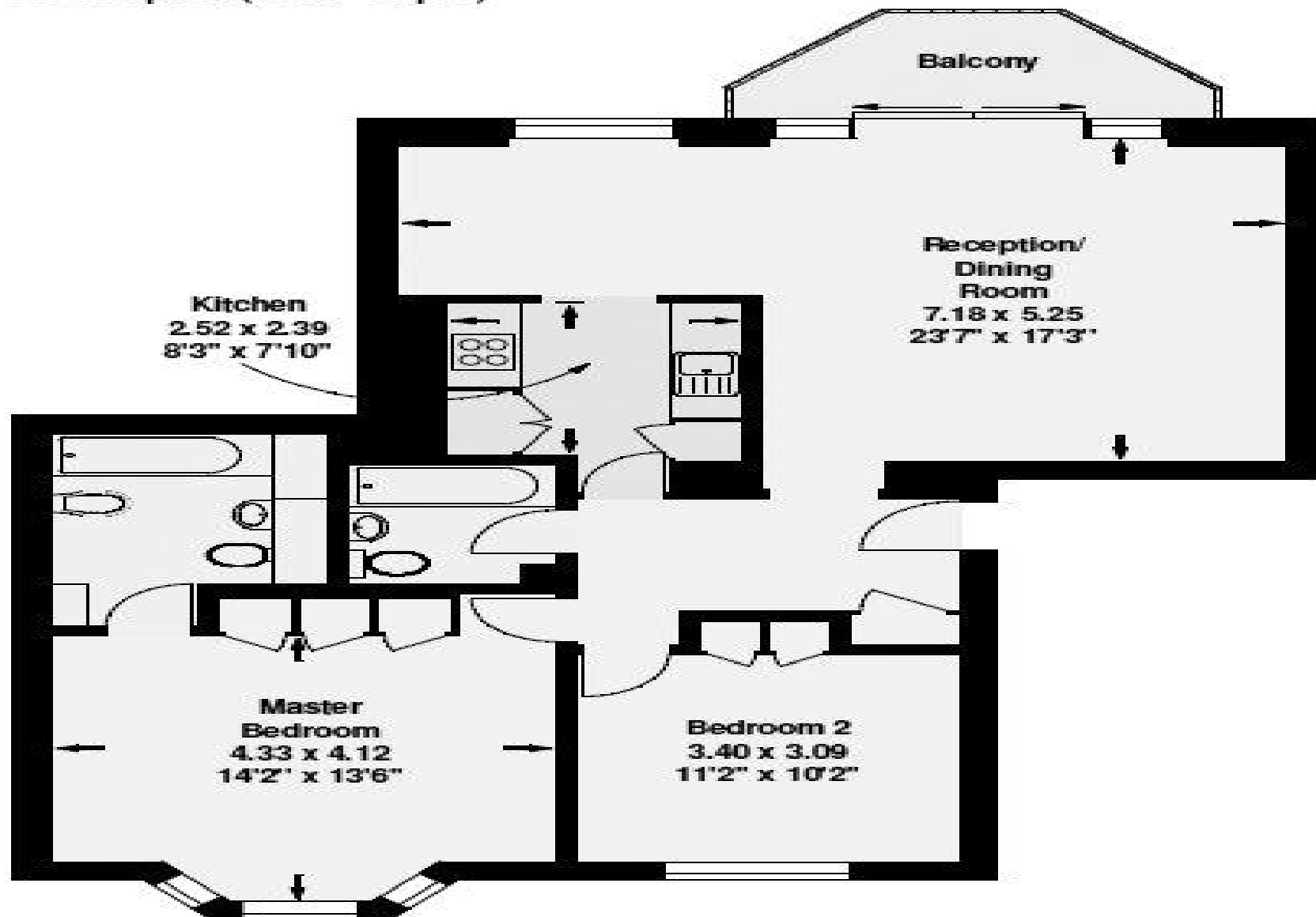


4.9 Stars | 132 Reviews

Find us on social media



Gross internal area (approx)
88 sq.m (947 sq.ft)



Third Floor