



Belsize Park Gardens, Belsize Park, London, NW3 | £1,295

- 25' Reception Room
- High Specification
- Interior Designed
- Newly Refurbished

- Available 6th March

"Vita Properties have been tremendously helpful throughout the process of securing/renting my flat. Informative about the property, prompt communication, easy to use dashboard for sharing of information, and pleasant to work with. Highly recommend!"

Available 6th March – A truly spectacular newly refurbished, interior designed, luxury garden apartment of around 1629 sq ft, with a 60' south facing garden, occupying the entire lower floor of an impressive stucco villa. The apartment is beautiful yet practical, and has a very tranquil feel to it which must be experienced to be appreciated. The 25' 8" kitchen/dining room is huge with fantastic preparation space and good dining space. The 25' x 16'5" reception room leads out onto a fabulous terrace and garden. The apartment is located within 4 minutes walking distance (Walkit.com) of Belsize Park Underground Station (Northern Line) and the local shops and cafes and 12 minutes walking distance (walkit.com) of Swiss Cottage Underground Station (Jubilee Line).

🏠 Flat

🔑 Available to Let

🛏 x 3

🛋 x 1

🚿 x 2



Oliver Kent

✉ oliver.kent@vitaproperties.uk

☎ +4477 7274 0351



"I was very impressed with Vita and their network of buyers. When the sale of my flat fell through (twice) they worked extremely hard to find new buyers in a difficult market - thank you!"



"Working with Vita properties has been a smooth experience! No complaints at all. Our letting agent, Diana has been fantastic and very helpful throughout the whole process. I would highly recommend both Vita properties and Diana."



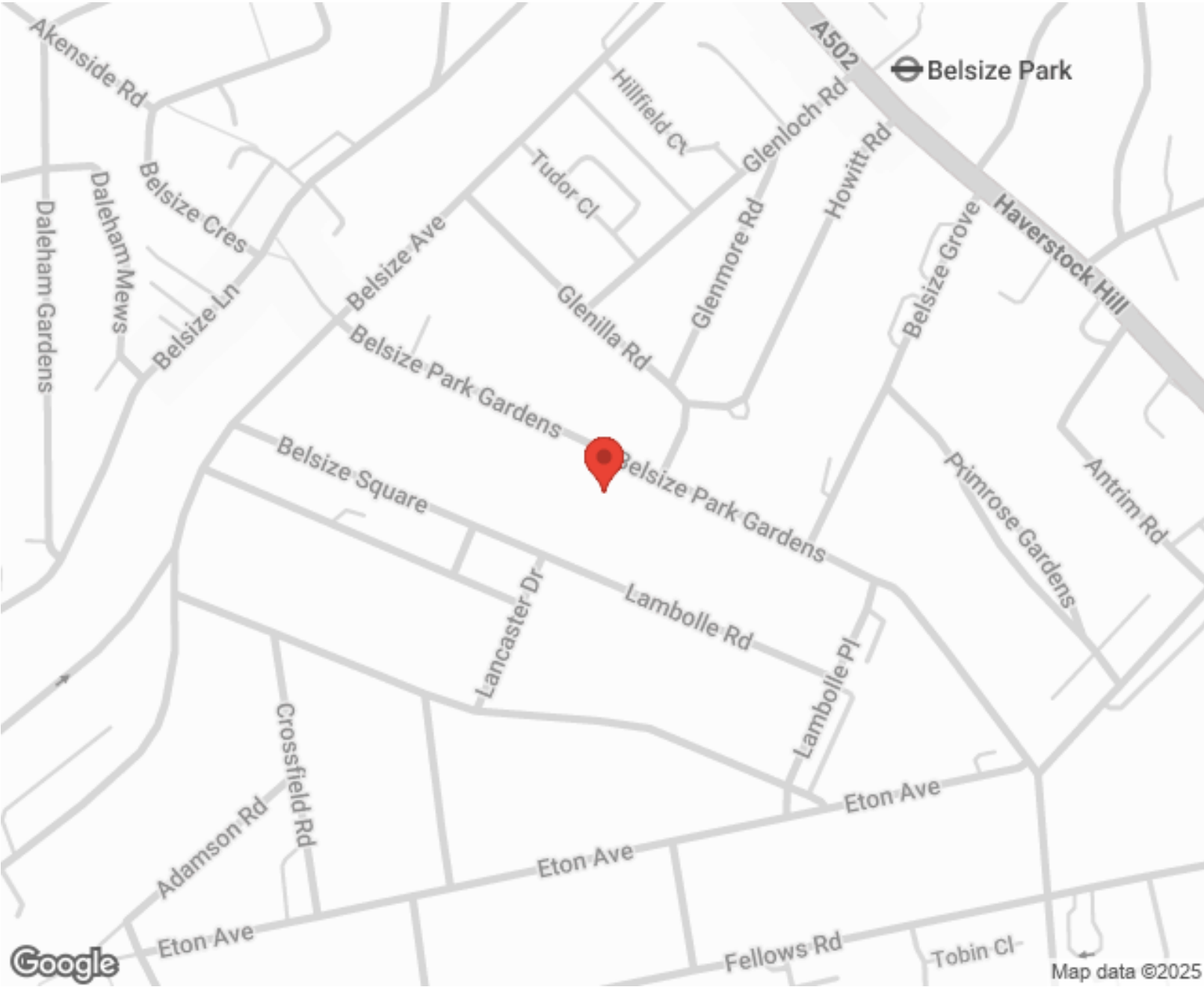
"I used Vita properties to find a flat recently and it was an overall professional, personalised and positive experience. Saira went the extra mile to accommodate to our needs and quick to help us whenever possible."



**MORE INFO, PICTURES,
CONTACT ON
OUR WEBSITE**



"Vita Properties is a very professional agency. My experience with them was incredible and the entire team was very helpful and kind throughout the renting process. I'd highly recommend!"



| Energy Efficiency Rating | | Environmental Impact (CO ₂) Rating | | | |
|---|---------|--|---------------------------|---------|--------------|
| | Current | Potential | | Current | Potential |
| Very energy efficient - lower running costs | | | | | |
| (92-100) A | | | (92-100) A | | |
| (81-91) B | | | (81-91) B | | |
| (69-80) C | | | (69-80) C | | |
| (55-68) D | | | (55-68) D | | |
| (39-54) E | | | (39-54) E | | |
| (21-38) F | | | (21-38) F | | |
| (1-20) G | | | (1-20) G | | |
| Not energy efficient - higher running costs | | | | | |
| England, Scotland & Wales | | EU Directive | England, Scotland & Wales | | EU Directive |

SCAN FOR MORE
GOOGLE REVIEWS



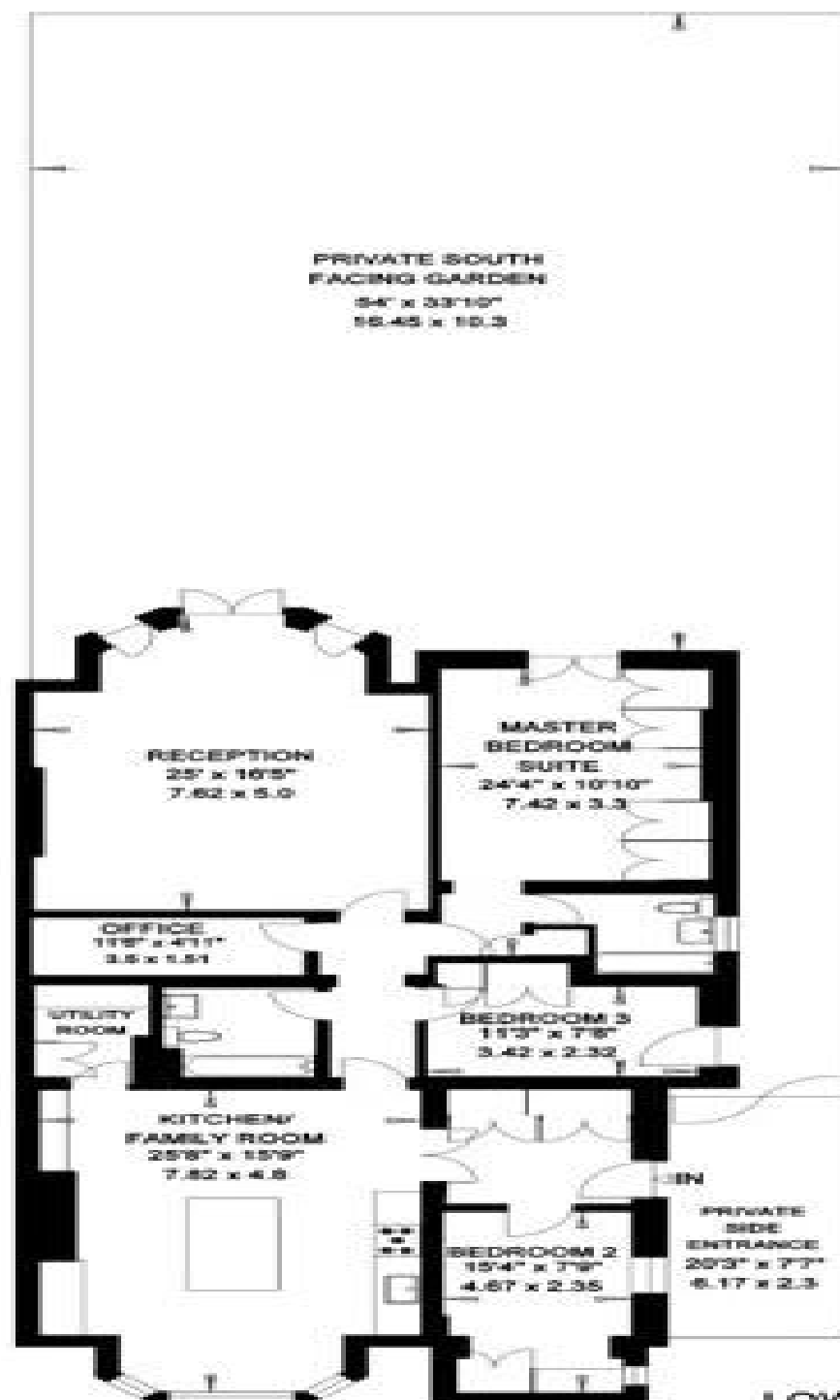
Google



4.9 Stars | 132 Reviews

Find us on social media

-  vitaproperties
-  VitaProperties
-  VitaProperties



Gross Internal Area = 151 sq. metres
1629 sq. feet



LOWER GROUND FLOOR