



Holford Road, Hampstead, London, NW3 .| £750

- Bright
- Lift
- Located in the heart of the Village
- Wooden floors

- Moments to the shops and transport
- Seconds to the Heath

"Vita Properties have been tremendously helpful throughout the process of securing/renting my flat. Informative about the property, prompt communication, easy to use dashboard for sharing of information, and pleasant to work with. Highly recommend!"

Available 18th February 2019 - Situated in the heart of Hampstead Village is this spacious three bedroom (approx. 1170 sq ft) apartment located on the third floor with lift access. The apartment comprises large entrance hall with storage cupboard, bright and spacious 21ft reception/dining room with feature fire place, a separate fully fitted eat in kitchen, large master bedroom with ample built in storage and a luxurious en-suite bathroom/WC with separate shower cubicle, further double bedroom with built in storage, a third compact double bedroom, and a fully tiled family bathroom/WC.

Holford Road is one of Hampstead's most prestigious residential streets and is situated just minutes from Hampstead Village, where everything from designer clothes and delis to second hand bookshops and pricey antiques can be found.

Hampstead Theatre, art-house cinemas, literary museums (Freud and Keats), galleries and open air concerts at Kenwood House are available for recreation in addition to the wide open spaces of Hampstead Heath, which offers breath-taking views, gardens and ponds, and open air swimming. Hampstead tube station on the Northern Line provides direct access to London's West End and the City. The area is well known for its abundance of exceptional schools which attracts families from across London looking to secure places.

🏠 Flat
🔑 Available
to Let
🛏 x 3
🍽 x 1
🚿 x 2

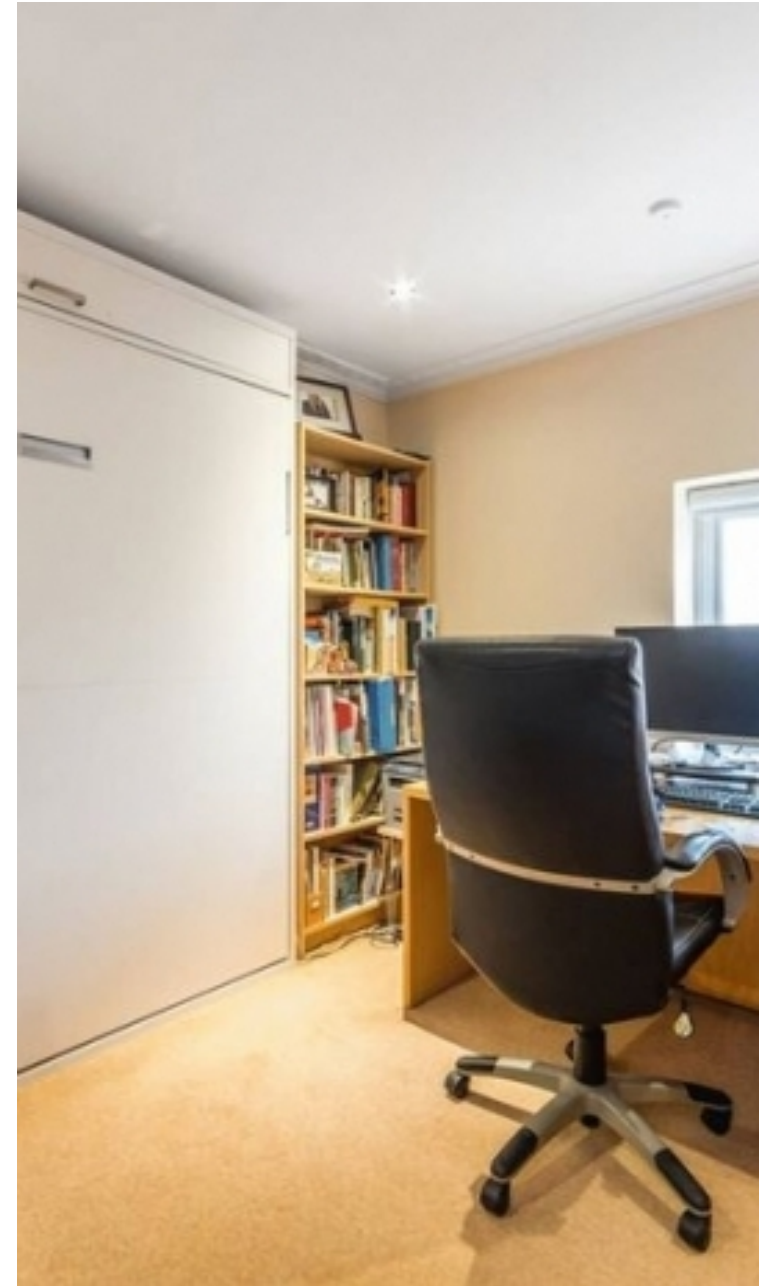


Oliver Kent

✉ oliver.kent@vitaproperties.uk
☎ +4477 7274 0351



"I was very impressed with Vita and their network of buyers. When the sale of my flat fell through (twice) they worked extremely hard to find new buyers in a difficult market - thank you!"



"Working with Vita properties has been a smooth experience! No complaints at all. Our letting agent, Diana has been fantastic and very helpful throughout the whole process. I would highly recommend both Vita properties and Diana."



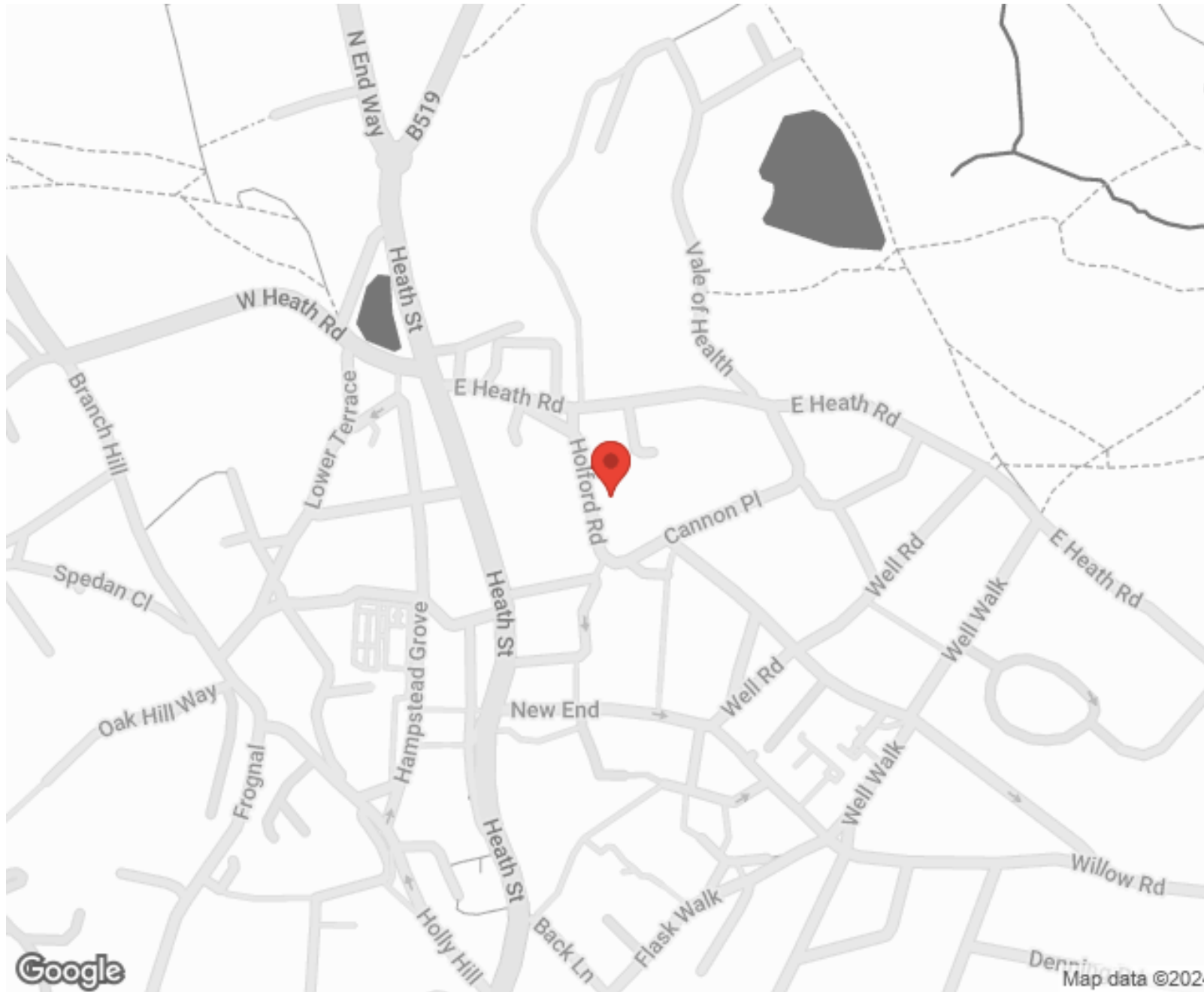
"I used Vita properties to find a flat recently and it was an overall professional, personalised and positive experience. Saira went the extra mile to accommodate to our needs and quick to help us whenever possible."



MORE INFO, PICTURES,
CONTACT ON
OUR WEBSITE



"Vita Properties is a very professional agency. My experience with them was incredible and the entire team was very helpful and kind throughout the renting process. I'd highly recommend!"



SCAN FOR MORE
GOOGLE REVIEWS



Google




4.9 Stars | 132 Reviews

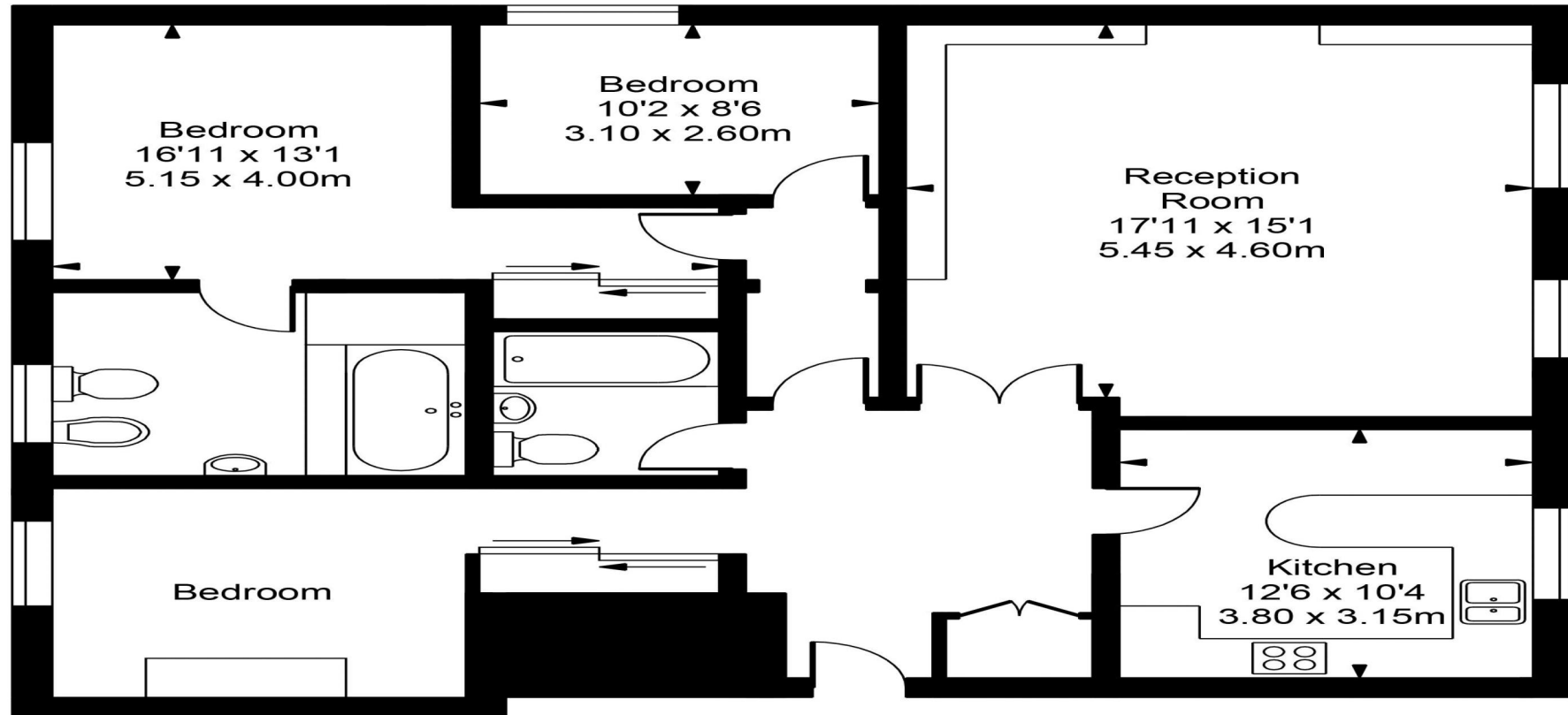
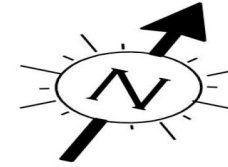
Find us on social media

 vitaproperties

 VitaProperties

 VitaProperties

Gainsborough Lodge



Approx Gross Internal Area 1171 Sq Ft - 108.79 Sq M

FOR ILLUSTRATIVE PURPOSES ONLY. NOT TO SCALE.

Whilst every attempt has been made to ensure the accuracy of the floorplan shown, all measurements, positioning, fixtures, fittings and any other data shown are an approximate interpretation for illustrative purposes only and are not to scale. No responsibility is taken for any error, omission, misstatement or use of data shown.
Floor plan by www.bestangle.co.uk