



West Heath Road, Hampstead, London, NW3 .| £1,150

-
- Detached House
 - Set Across 3 Floors
 - Private Driveway
 - Available for Immediate Occupation
 - Complimentary X-Mas Hamper To All Move In's Before 2019!

"Vita Properties have been tremendously helpful throughout the process of securing/renting my flat. Informative about the property, prompt communication, easy to use dashboard for sharing of information, and pleasant to work with. Highly recommend!"

MOVE IN WITH NO TENANT FEE'S -

A spacious four double bedroom family home, located moments from Hampstead Heath and the multiple amenities of Golders Green. The property offers a reception/dining room leading onto a private rear garden, a fully integrated kitchen able to accommodate a full size dining table, principal bedroom with en-suite bathroom and built in storage, three further bedrooms (one with own WC and basin) and a family bathroom with separate shower cubicle. Offered unfurnished.

Available 01 October 2018



Oliver Kent

✉ oliver.kent@vitaproperties.uk
☎ +4477 7274 0351



🏠 House
🔑 Available
to Let
🛏 x 4
🛋 x 1
🚿 x 2



"I was very impressed with Vita and their network of buyers. When the sale of my flat fell through (twice) they worked extremely hard to find new buyers in a difficult market - thank you!"



"Working with Vita properties has been a smooth experience! No complaints at all. Our letting agent, Diana has been fantastic and very helpful throughout the whole process. I would highly recommend both Vita properties and Diana."



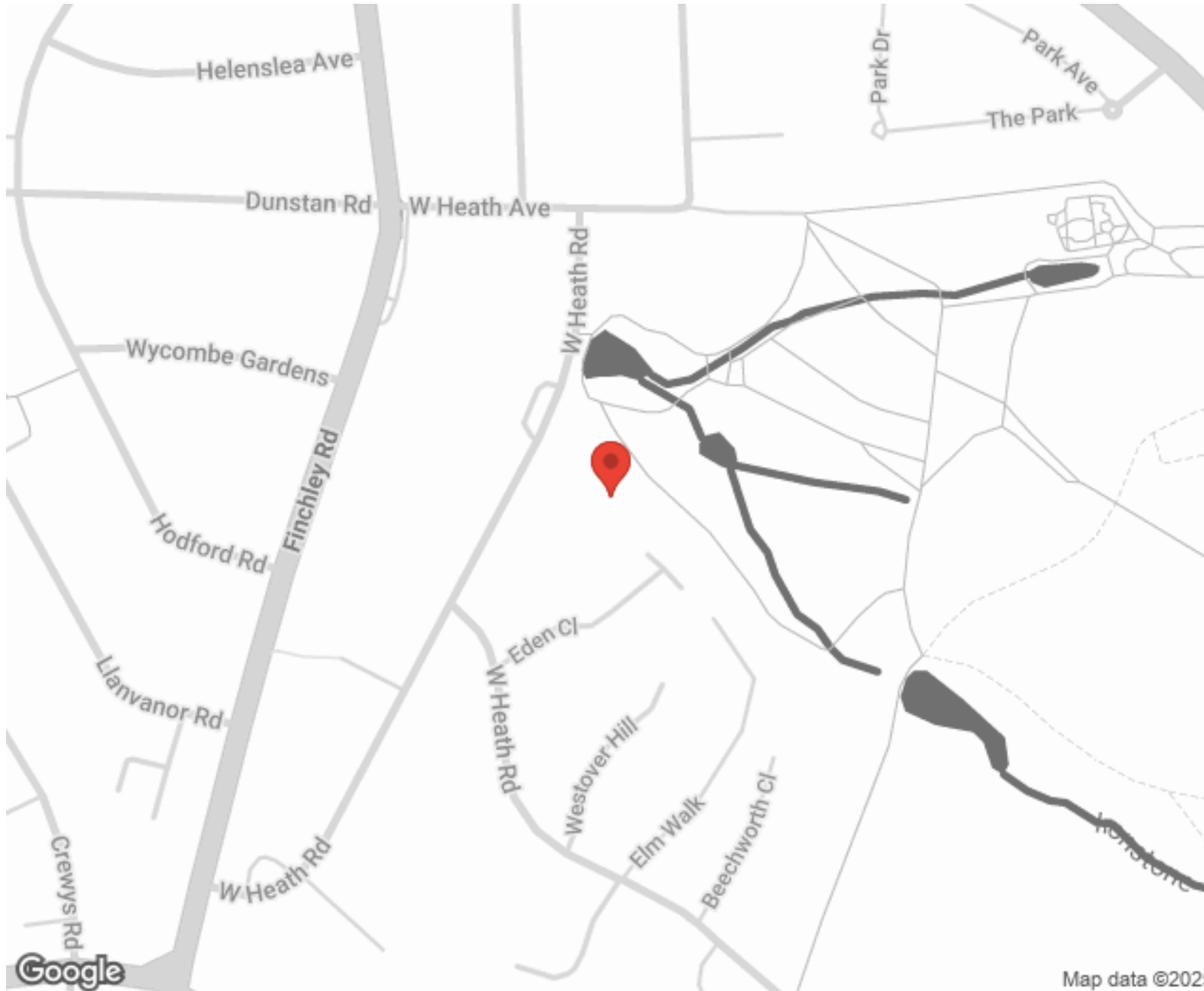
"I used Vita properties to find a flat recently and it was an overall professional, personalised and positive experience. Saira went the extra mile to accommodate to our needs and quick to help us whenever possible."



**MORE INFO, PICTURES,
CONTACT ON
OUR WEBSITE**



"Vita Properties is a very professional agency. My experience with them was incredible and the entire team was very helpful and kind throughout the renting process. I'd highly recommend!"



SCAN FOR MORE
GOOGLE REVIEWS



Google




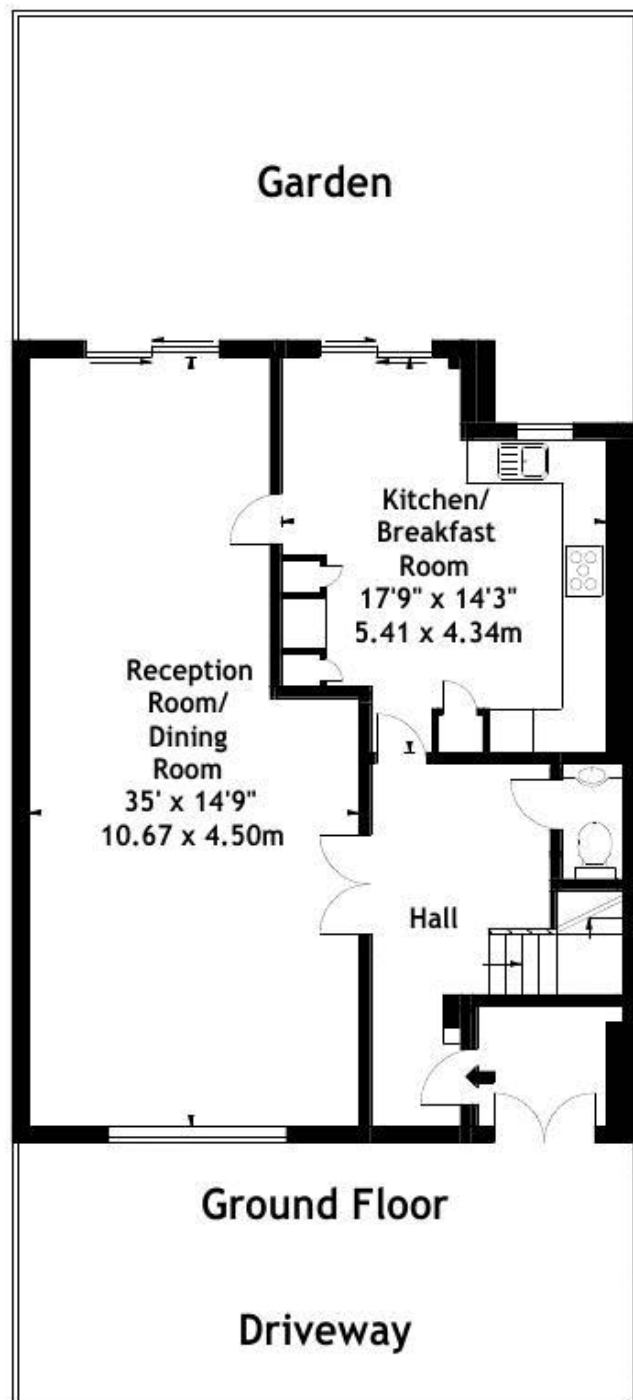
4.9 Stars | 132 Reviews

Find us on social media

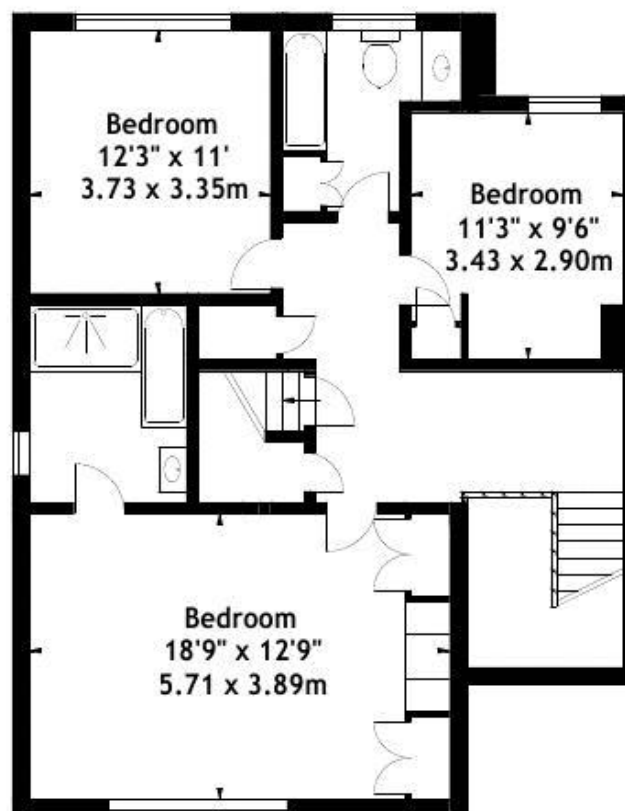
 vitaproperties

 VitaProperties

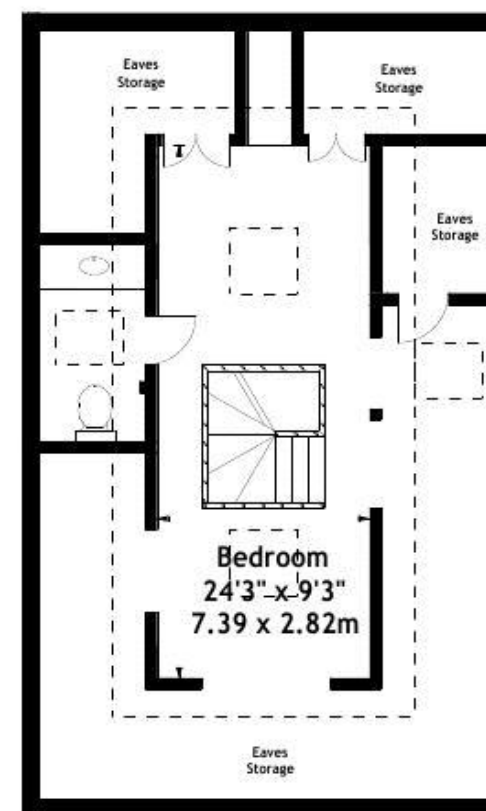
 VitaProperties



**West Heath Road,
Hampstead, NW3**
Approx. Gross Internal Area
2400 Sq Ft - 222.96 Sq M
(Including Eaves Storage)



First Floor



Second Floor

Measured in accordance with RICS guidelines. Every attempt is made to ensure accuracy, however all measurements are approximate. This floor plan is for illustrative purposes only and is not to scale.
© Datography Ltd 2017
Photographs * Floorplans * Virtual Tours
Tel: 0845 643 4401 www.datography.com