



Hamilton Terrace, St Johns Wood, London, NW8 .| £1,400,000

- Guest WC
- South facing balcony
- Open plan living
- Long lease

- 2 Balconies
- Chain free

"Vita Properties have been tremendously helpful throughout the process of securing/renting my flat. Informative about the property, prompt communication, easy to use dashboard for sharing of information, and pleasant to work with. Highly recommend!"

We are delighted to offer this 1155 sq ft two bedroom apartment set on the first floor of this handsome red brick semi-detached Victorian house. This charming property exudes delightful traditional style, but also offers an incoming purchaser a great opportunity to create a fantastic modern apartment. The property benefits from bright and spacious accommodation, high ceilings, french windows, lots of light, a private balcony off the living room with views over the sweeping gardens to the rear and a further terrace overlooking Hamilton Terrace. Hamilton Terrace is one of North West London's most sought after locations, and a celebrated London address. The apartment is wonderfully positioned for the shopping facilities, cafes and restaurants of both St Johns Wood and Little Venice.

Closest stations are St Johns Wood (Jubilee line) and Maida Vale (Bakerloo line) and the superb open spaces of Regents Park (0.9 miles) and Hyde Park (1.

8 miles)

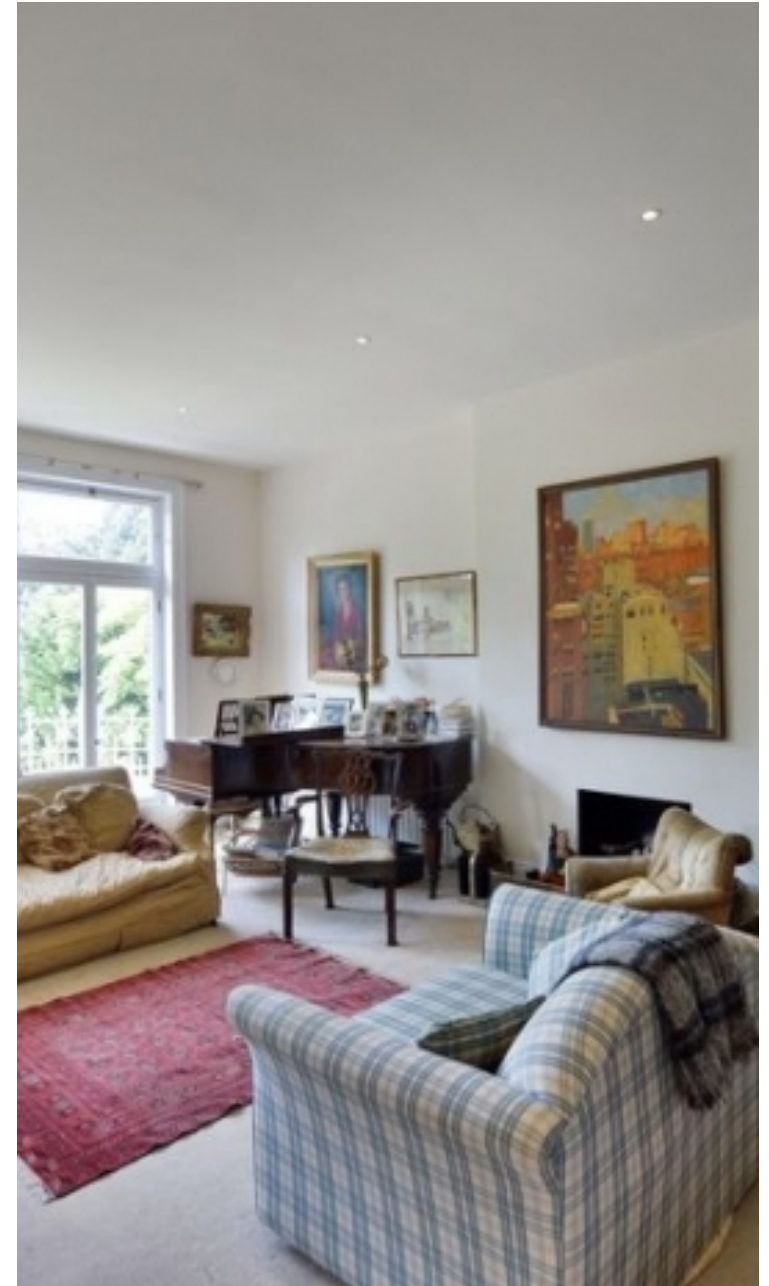


Oliver Kent

✉ oliver.kent@vitaproperties.uk
☎ +4477 7274 0351



"I was very impressed with Vita and their network of buyers. When the sale of my flat fell through (twice) they worked extremely hard to find new buyers in a difficult market - thank you!"



"Working with Vita properties has been a smooth experience! No complaints at all. Our letting agent, Diana has been fantastic and very helpful throughout the whole process. I would highly recommend both Vita properties and Diana."



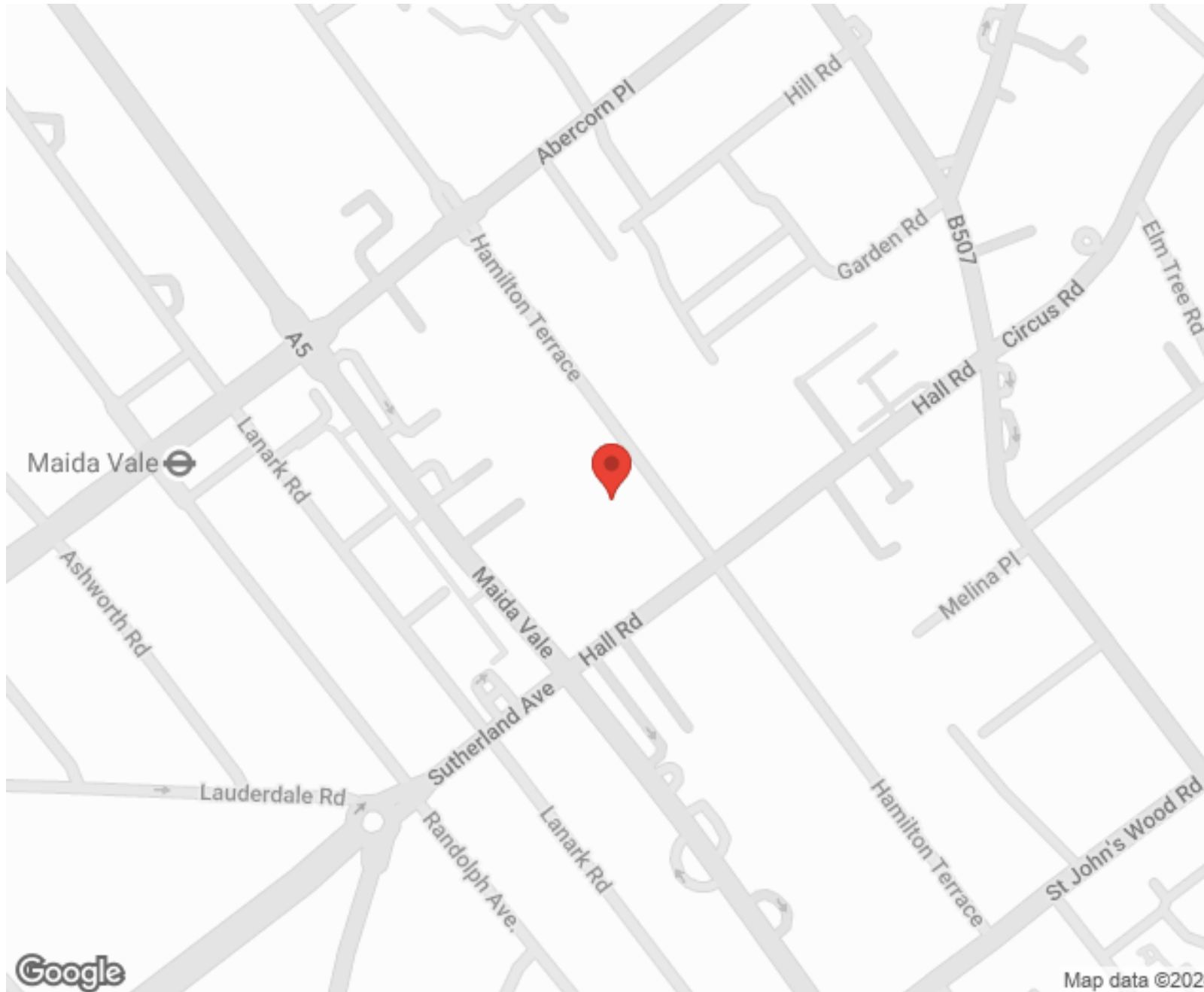
"I used Vita properties to find a flat recently and it was an overall professional, personalised and positive experience. Saira went the extra mile to accommodate to our needs and quick to help us whenever possible."



MORE INFO, PICTURES,
CONTACT ON
OUR WEBSITE



"Vita Properties is a very professional agency. My experience with them was incredible and the entire team was very helpful and kind throughout the renting process. I'd highly recommend!"



SCAN FOR MORE
GOOGLE REVIEWS




Google




4.9 Stars | 132 Reviews

Find us on social media

 vitaproperties

 VitaProperties

 VitaProperties

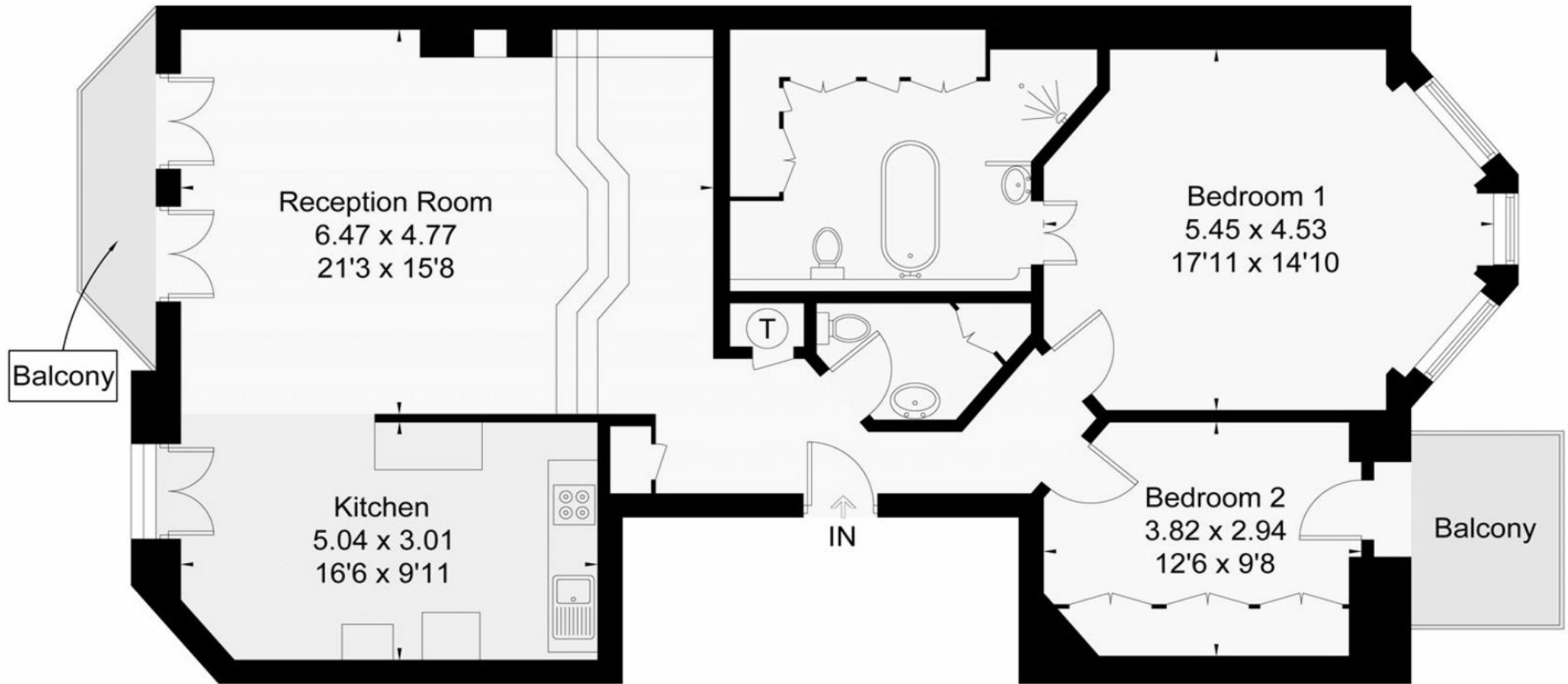
Hamilton Terrace, NW8

Gross Internal Area (approx) = 107.3 sq m / 1155 sq ft

Balconies Areas = 7.5 sq m / 81 sq ft

For identification only. Not to scale.

© Floorplanz Ltd



First Floor