



VITA
Properties

Lindfield Gardens, Hampstead, London, NW3 | £1,500

-
- Duplex
 - Guest WC
 - 2 Receptions

"Vita Properties have been tremendously helpful throughout the process of securing/renting my flat. Informative about the property, prompt communication, easy to use dashboard for sharing of information, and pleasant to work with. Highly recommend!"

Available 31 August 2018 – A magnificent duplex apartment situated in this excellent location benefiting from a lovely terrace and garden, balcony high ceilings, wooden floors throughout, off street parking for 2 cars. Accommodation comprises: ground: magnificent drawing room with original fire place with French doors leading to the balcony, 2nd reception room also with original features, fully fitted eat in kitchen, study/4th bedroom mezzanine: guest cloakroom, utility room, cloaks cupboard lower ground: master bedroom with doors leading to the private garden with fitted wardrobes and en-suite bathroom, 2nd large double bedroom with en-suite shower room, 3rd double bedroom, family bathroom. Furnished/unfurnished

🏠 Flat

🔑 Available to Let

🛏 x 4

🛋 x 2

🪑 x 3



Oliver Kent

✉️ oliver.kent@vitaproperties.uk

☎️ +4477 7274 0351



"I was very impressed with Vita and their network of buyers. When the sale of my flat fell through (twice) they worked extremely hard to find new buyers in a difficult market - thank you!"



"Working with Vita properties has been a smooth experience! No complaints at all. Our letting agent, Diana has been fantastic and very helpful throughout the whole process. I would highly recommend both Vita properties and Diana."



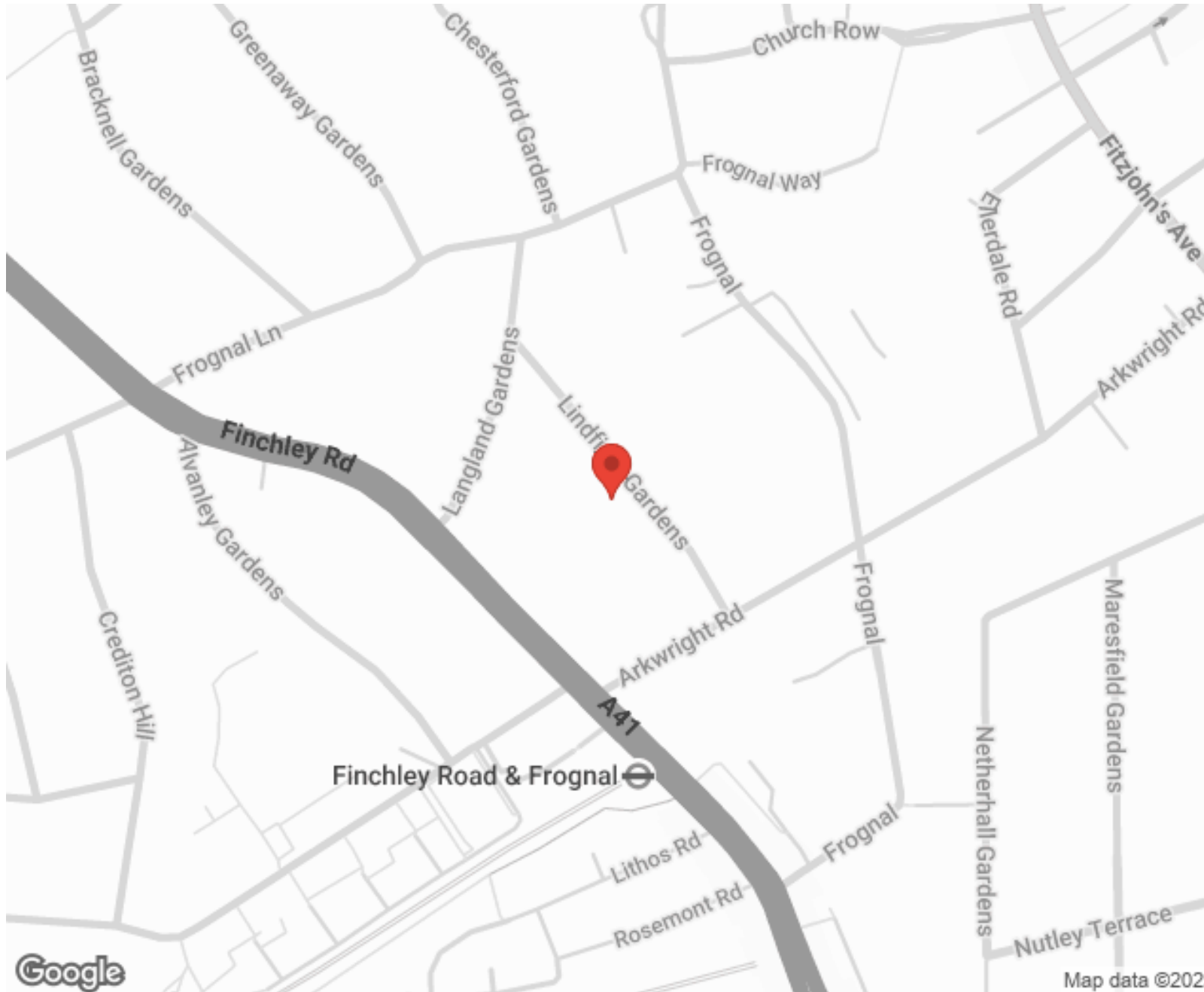
"I used Vita properties to find a flat recently and it was an overall professional, personalised and positive experience. Saira went the extra mile to accommodate to our needs and quick to help us whenever possible."



**MORE INFO, PICTURES,
CONTACT ON
OUR WEBSITE**



"Vita Properties is a very professional agency. My experience with them was incredible and the entire team was very helpful and kind throughout the renting process. I'd highly recommend!"



SCAN FOR MORE
GOOGLE REVIEWS



Google




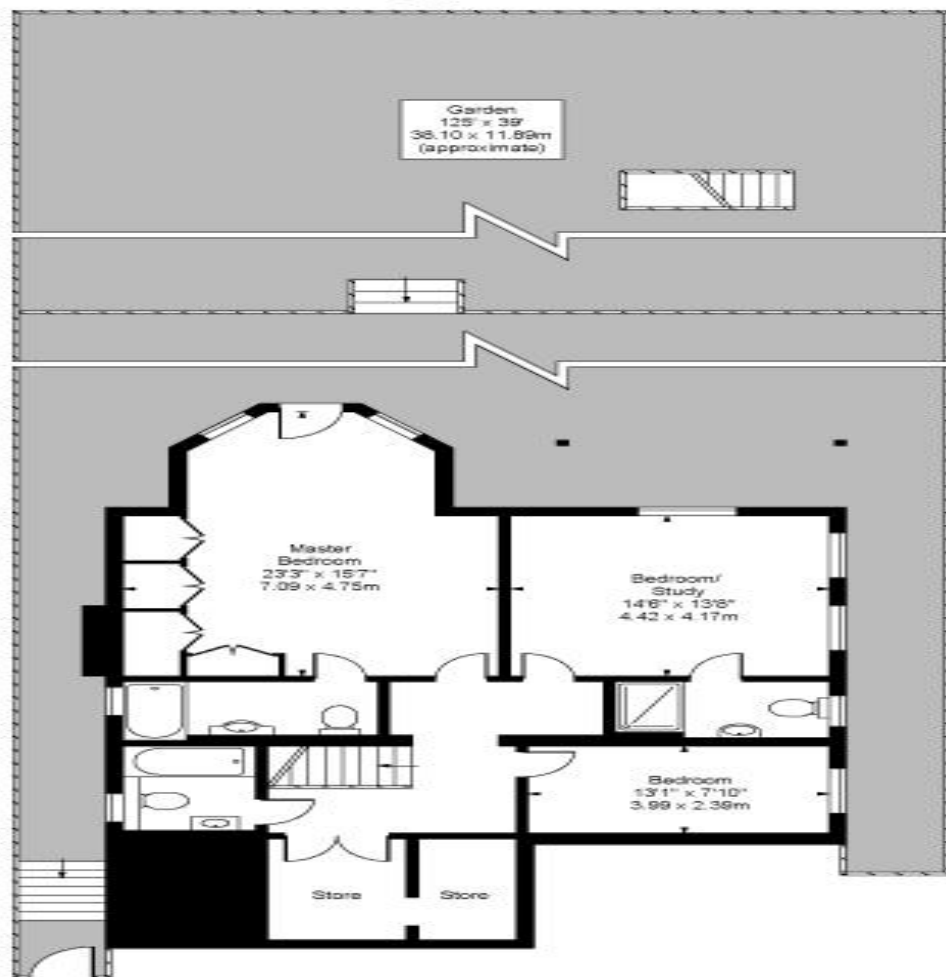
4.9 Stars | 132 Reviews

Find us on social media

 vitaproperties

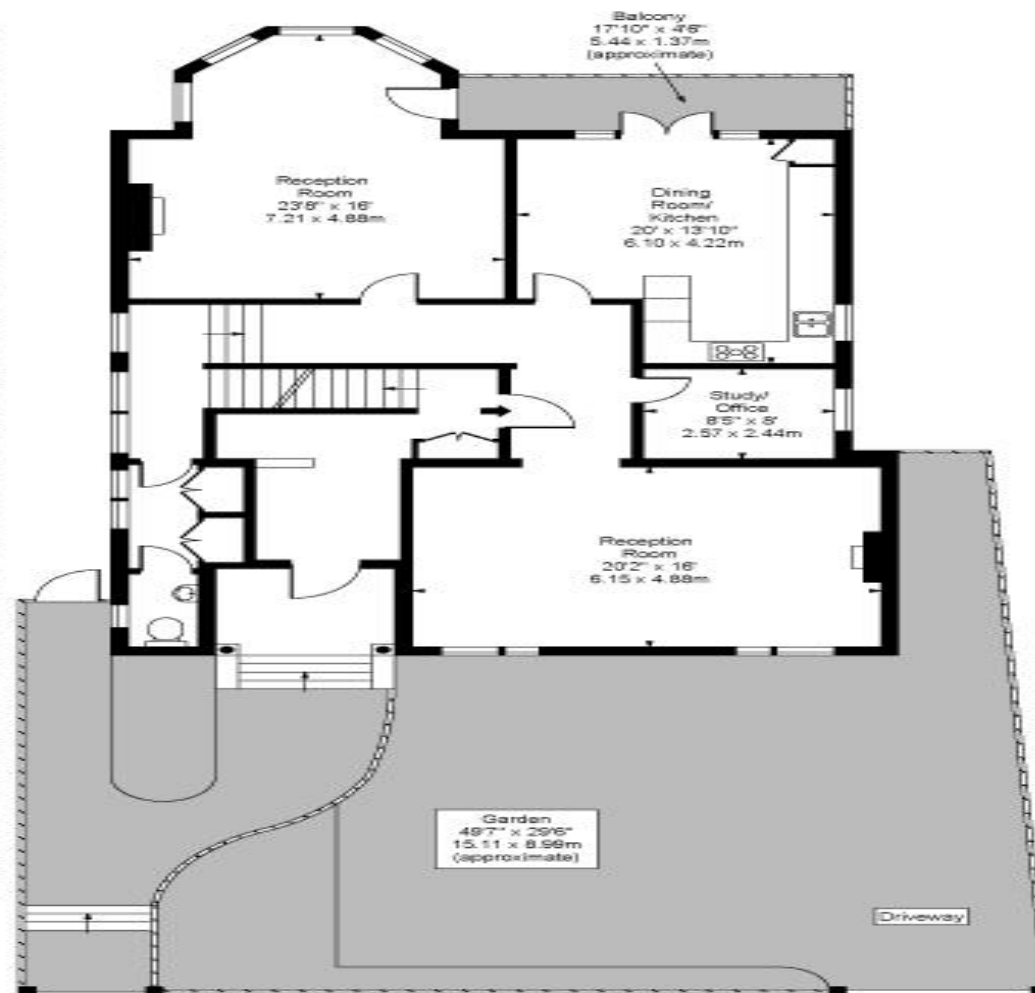
 VitaProperties

 VitaProperties



Lower Ground Floor

Lindfield Gardens, Hampstead, NW3



Ground Floor

Approx Gross Internal Area 2480 Sq Ft - 230.39 Sq M
(Excluding Cellar)

For Illustration Purposes Only - Not To Scale
Floor Plan by www.bpmmediagroup.com
Ref. No. P53074