



Westfield, Kidderpore Avenue, London, NW3 .| £975,000

- 24 Hour Porter
- Two Receptions
- Two Balconies
- Swimming Pool

- Gym
- Parking
- Wooden Floors

"Vita Properties have been tremendously helpful throughout the process of securing/renting my flat. Informative about the property, prompt communication, easy to use dashboard for sharing of information, and pleasant to work with. Highly recommend!"

Situated on the second floor of this highly sought-after Hampstead development is this spacious two/three double bedroom, two bathroom apartment featuring a private terrace spanning the width of the apartment, overlooking fountains and immaculately landscaped communal gardens.

The apartment also enjoys the use of a private secure underground parking space.

Benefits include a 24 hour concierge, vast communal gardens, communal gymnasium and swimming pool facilities and lift access.

#### Accommodation & Amenities:

Master Bedroom With Ensuite Bathroom, Two Further Double Bedrooms, Family Bathroom, Kitchen, Reception Room, Private Terrace, Secure Parking Space, Lift, Concierge, Communal Gymnasium & Swimming Pool, Communal Gardens.

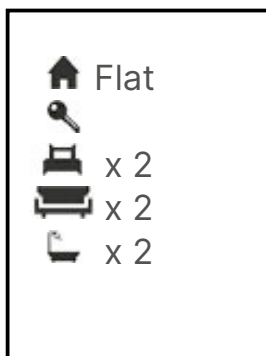
Westfield is a sought after contemporary development with outstanding resident's facilities including indoor swimming pool, gymnasium, extensive communal gardens, lift, 24 hour uniformed portage and underground parking.

Located on Kidderpore Avenue all local facilities are within easy access including Hampstead High Street, Hampstead Heath and the O2 Centre on Finchley Road



Oliver Kent

✉ [oliver.kent@vitaproperties.uk](mailto:oliver.kent@vitaproperties.uk)  
☎ +4477 7274 0351



"I was very impressed with Vita and their network of buyers. When the sale of my flat fell through (twice) they worked extremely hard to find new buyers in a difficult market - thank you!"

---



"Working with Vita properties has been a smooth experience! No complaints at all. Our letting agent, Diana has been fantastic and very helpful throughout the whole process. I would highly recommend both Vita properties and Diana."

---



"I used Vita properties to find a flat recently and it was an overall professional, personalised and positive experience. Saira went the extra mile to accommodate to our needs and quick to help us whenever possible."

---

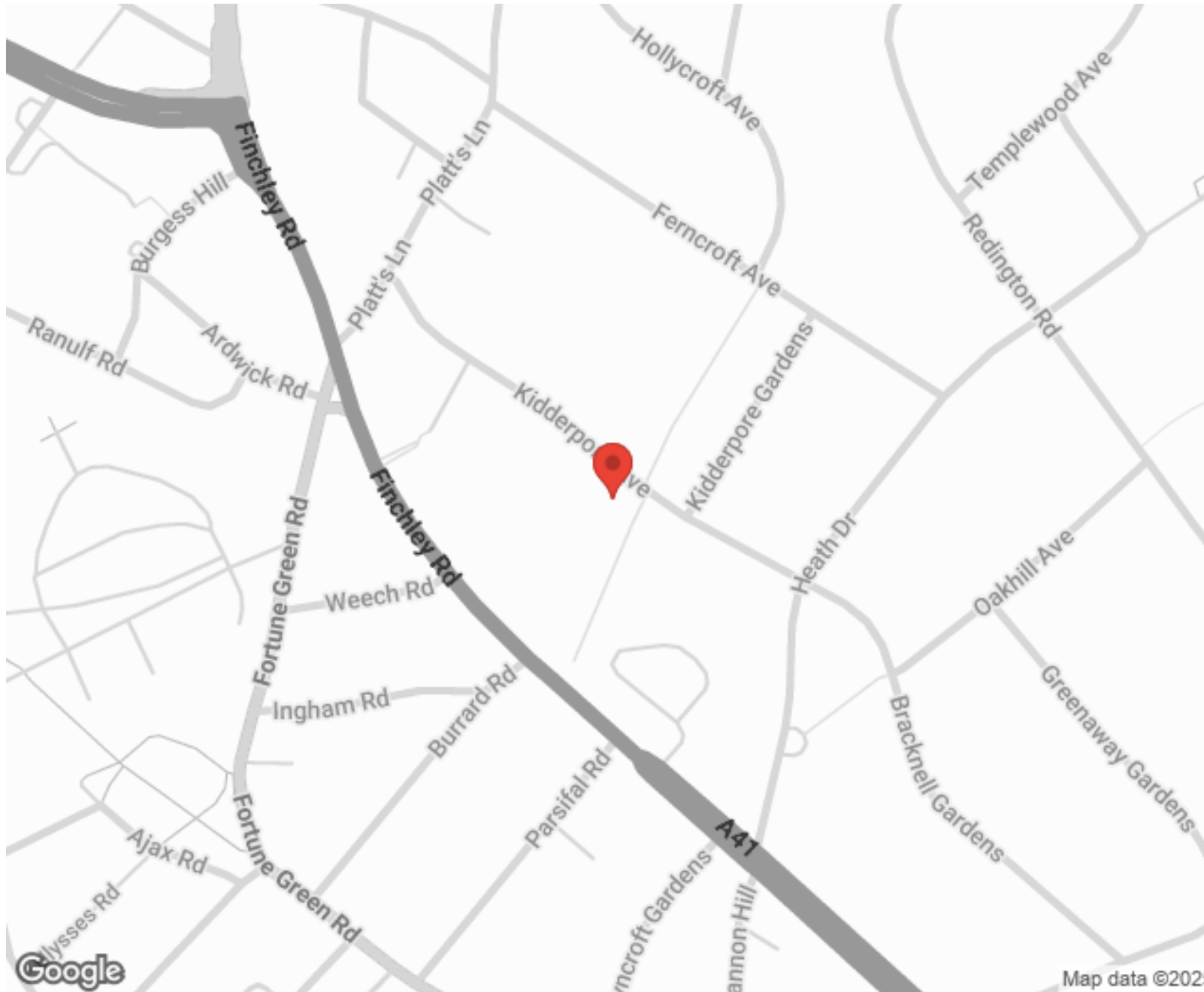


**MORE INFO, PICTURES,  
CONTACT ON  
OUR WEBSITE**



"Vita Properties is a very professional agency. My experience with them was incredible and the entire team was very helpful and kind throughout the renting process. I'd highly recommend!"

---



SCAN FOR MORE  
GOOGLE REVIEWS






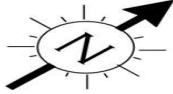
Google



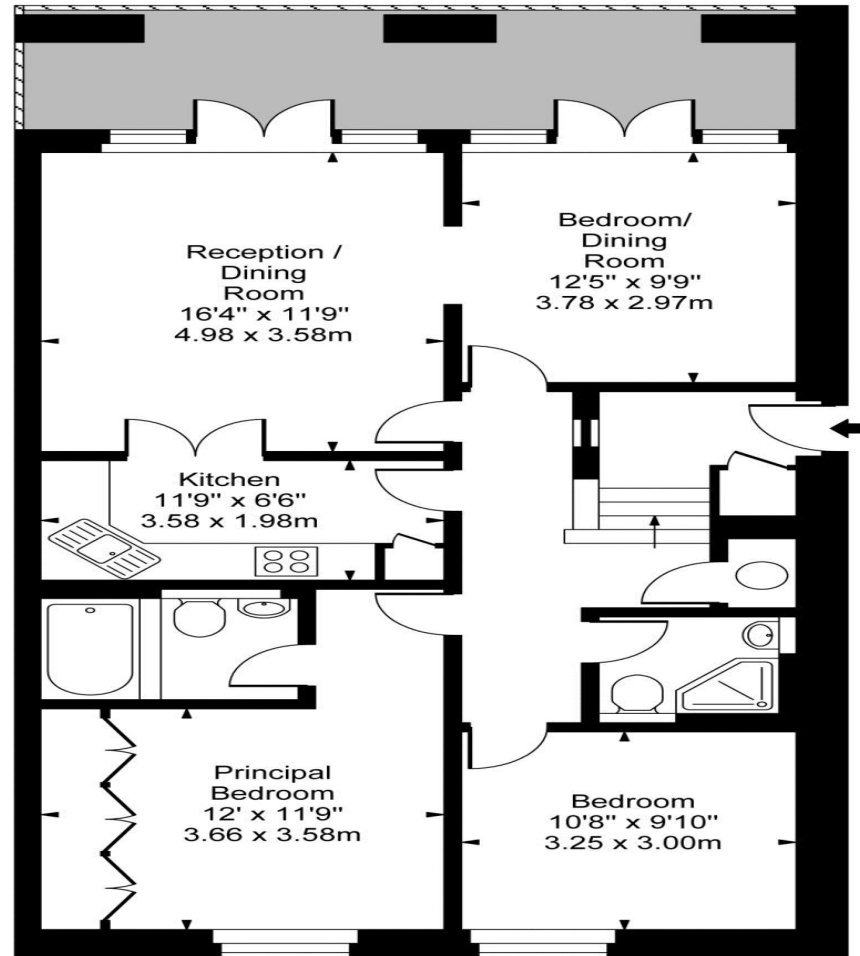
4.9 Stars | 132 Reviews

Find us on social media

-  vitaproperties
-  VitaProperties
-  VitaProperties



**Westfield,  
Kidderpore Avenue, NW3**



Second Floor

**Approx Gross Internal Area 941 Sq Ft - 87.42 Sq M**

For Illustration Purposes Only - Not To Scale Floor Plan by [www.nogaphotostudio.com](http://www.nogaphotostudio.com) Ref: No.35851

This floor plan should be used as a general outline for guidance only. Any intending purchaser or lessee should satisfy themselves by inspection, searches, enquiries and full survey as to the correctness of each statement. Any areas, measurements or distances quoted are approximate and should not be used to value a property or be the basis of any sale or let.