



VITA
Properties

Lyndale Avenue, London, NW2 | £1,795

- 7 Bedrooms - 5 Bathrooms
- 2 Reception Rooms - 4 Balconies
- Private south facing garden
- Off street parking for 3 cars

- Available immediately

"Vita Properties have been tremendously helpful throughout the process of securing/renting my flat. Informative about the property, prompt communication, easy to use dashboard for sharing of information, and pleasant to work with. Highly recommend!"

Available immediately is this stunning and luxurious detached house is presented with 7 bedrooms over 4 floors and boasts of 4 balconies, large garden, 2 car garage, off street parking and wealth of character. Located on the residential Lyndale Avenue the property is close to a wide variety of shops, bars and restaurants available in both Hampstead and Golders Green.



Oliver Kent

✉ oliver.kent@vitaproperties.uk

☎ +4477 7274 0351



🏠 House

🔑 Available to Let

🛏 x 5+

🛋 x 3

🚿 x 5+



"I was very impressed with Vita and their network of buyers. When the sale of my flat fell through (twice) they worked extremely hard to find new buyers in a difficult market - thank you!"



"Working with Vita properties has been a smooth experience! No complaints at all. Our letting agent, Diana has been fantastic and very helpful throughout the whole process. I would highly recommend both Vita properties and Diana."



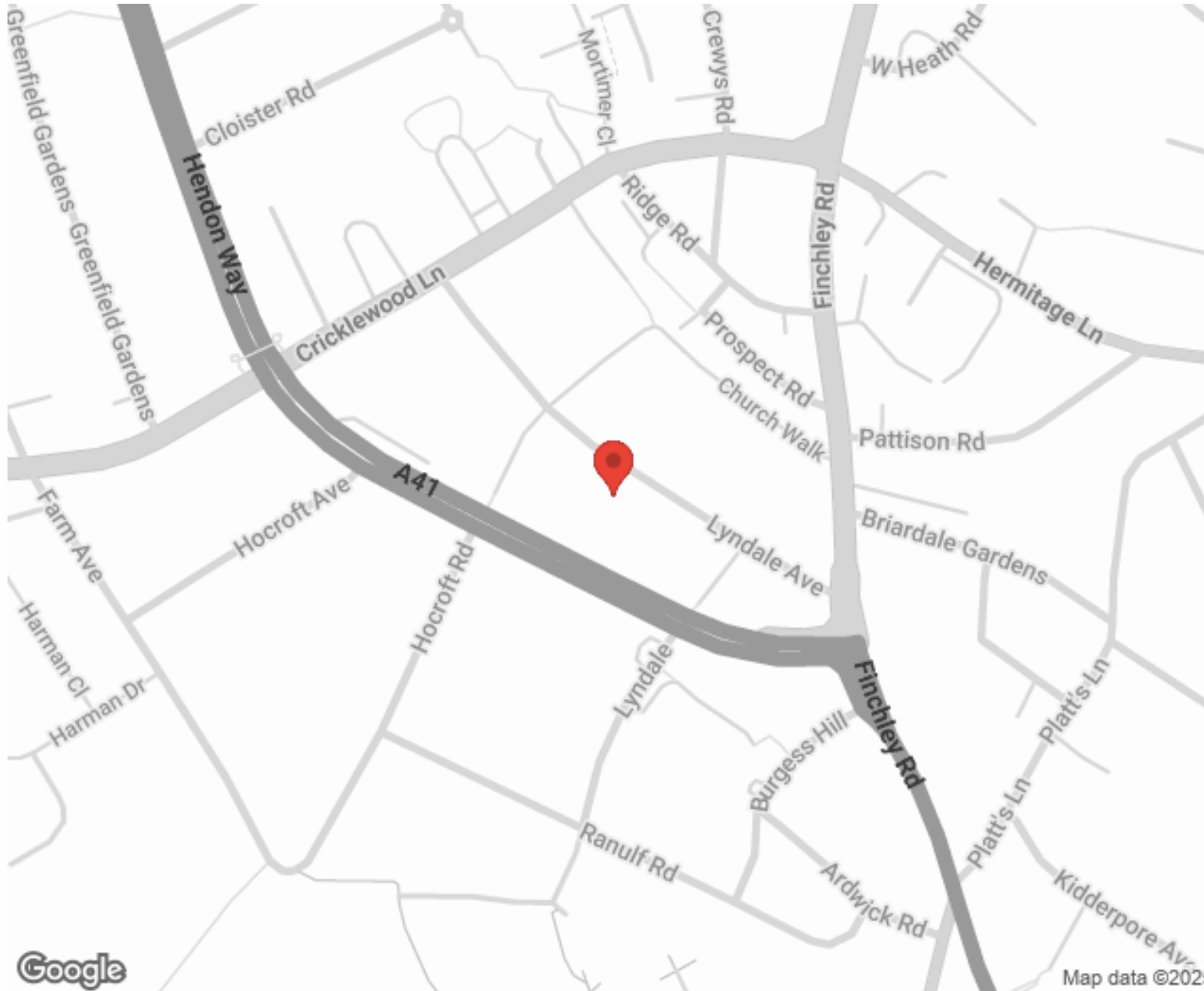
"I used Vita properties to find a flat recently and it was an overall professional, personalised and positive experience. Saira went the extra mile to accommodate to our needs and quick to help us whenever possible."



MORE INFO, PICTURES,
CONTACT ON
OUR WEBSITE



"Vita Properties is a very professional agency. My experience with them was incredible and the entire team was very helpful and kind throughout the renting process. I'd highly recommend!"



SCAN FOR MORE
GOOGLE REVIEWS

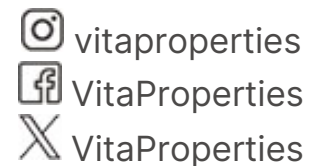


Google

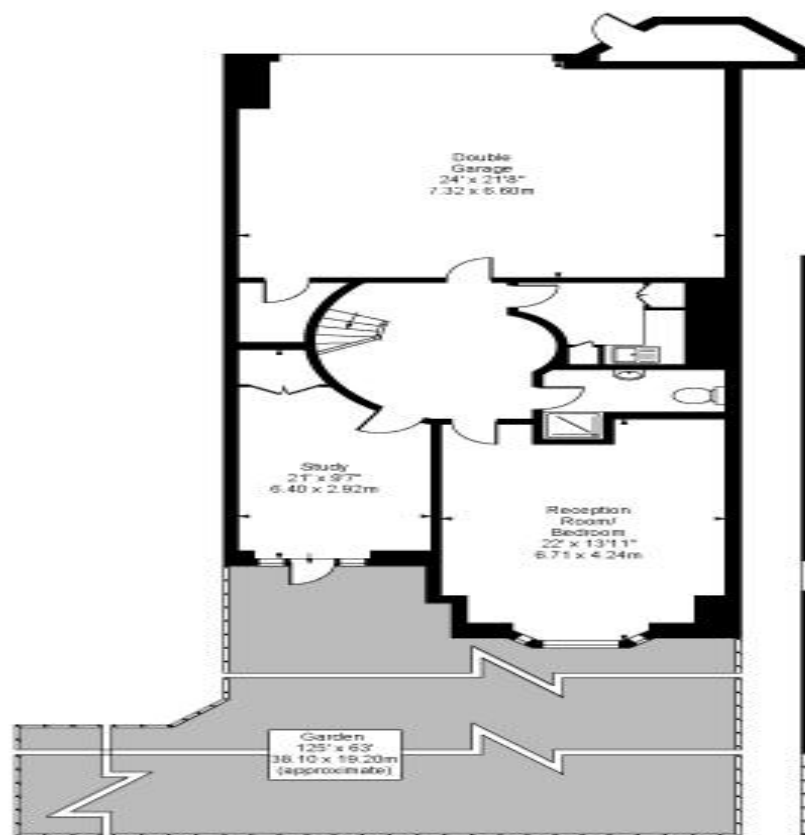


4.9 Stars | 132 Reviews

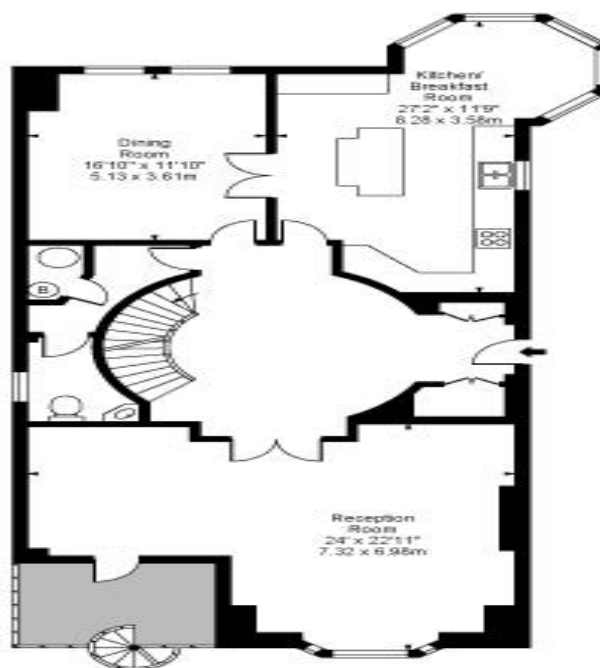
Find us on social media



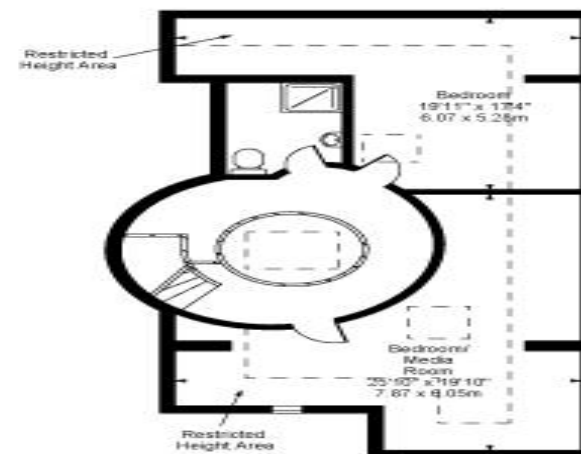
Lyndale Avenue, NW2



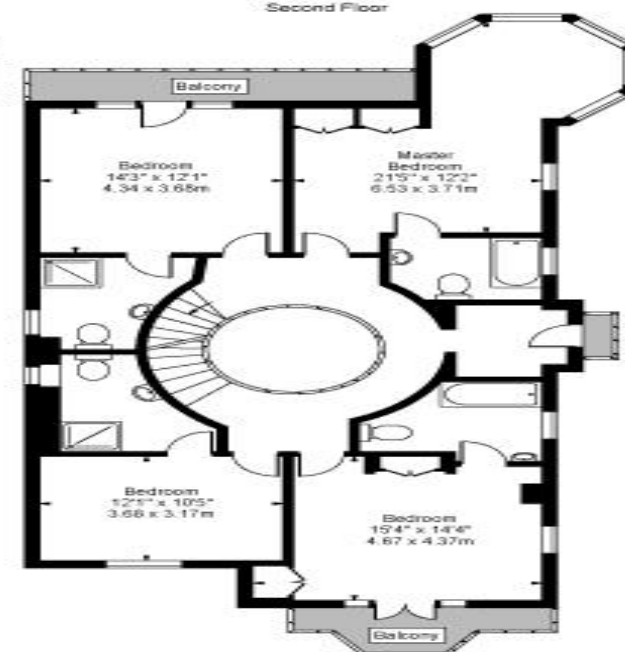
Lower Ground Floor



Ground Floor



Second Floor



First Floor

Approx Gross Internal Area **4653 Sq Ft - 432.26 Sq M**
(Including Restricted Height Area)

For Illustration Purposes Only - Not To Scale
www.goldens.co.uk
Prepared for Chestertons
Ref. No. 001898