



VITA
Properties

Victoria Mews, London, NW6 .| £295

- Available 15 September 2017
- Spacious open plan studio
- Moments to transport, shops and restaurants
- Wooden floors

- Furn or unfurn

"Vita Properties have been tremendously helpful throughout the process of securing/renting my flat. Informative about the property, prompt communication, easy to use dashboard for sharing of information, and pleasant to work with. Highly recommend!"

Available 15 September - A contemporary studio mews house conveniently located on this quiet mews close to the Kilburn High Road and Salisbury Road. Comprising a modern fully fitted open plan kitchen with appliances, spacious reception room with the ability to create a separate sleeping area, fitted wardrobes and wooden floors. Victoria Mews is close to both Kilburn High Road and Queens Park.

Offered furnished or unfurnished



Oliver Kent

✉ oliver.kent@vitaproperties.uk
☎ +4477 7274 0351





House



Available to Let



x 0



x 1



x 1



"I was very impressed with Vita and their network of buyers. When the sale of my flat fell through (twice) they worked extremely hard to find new buyers in a difficult market - thank you!"



"Working with Vita properties has been a smooth experience! No complaints at all. Our letting agent, Diana has been fantastic and very helpful throughout the whole process. I would highly recommend both Vita properties and Diana."



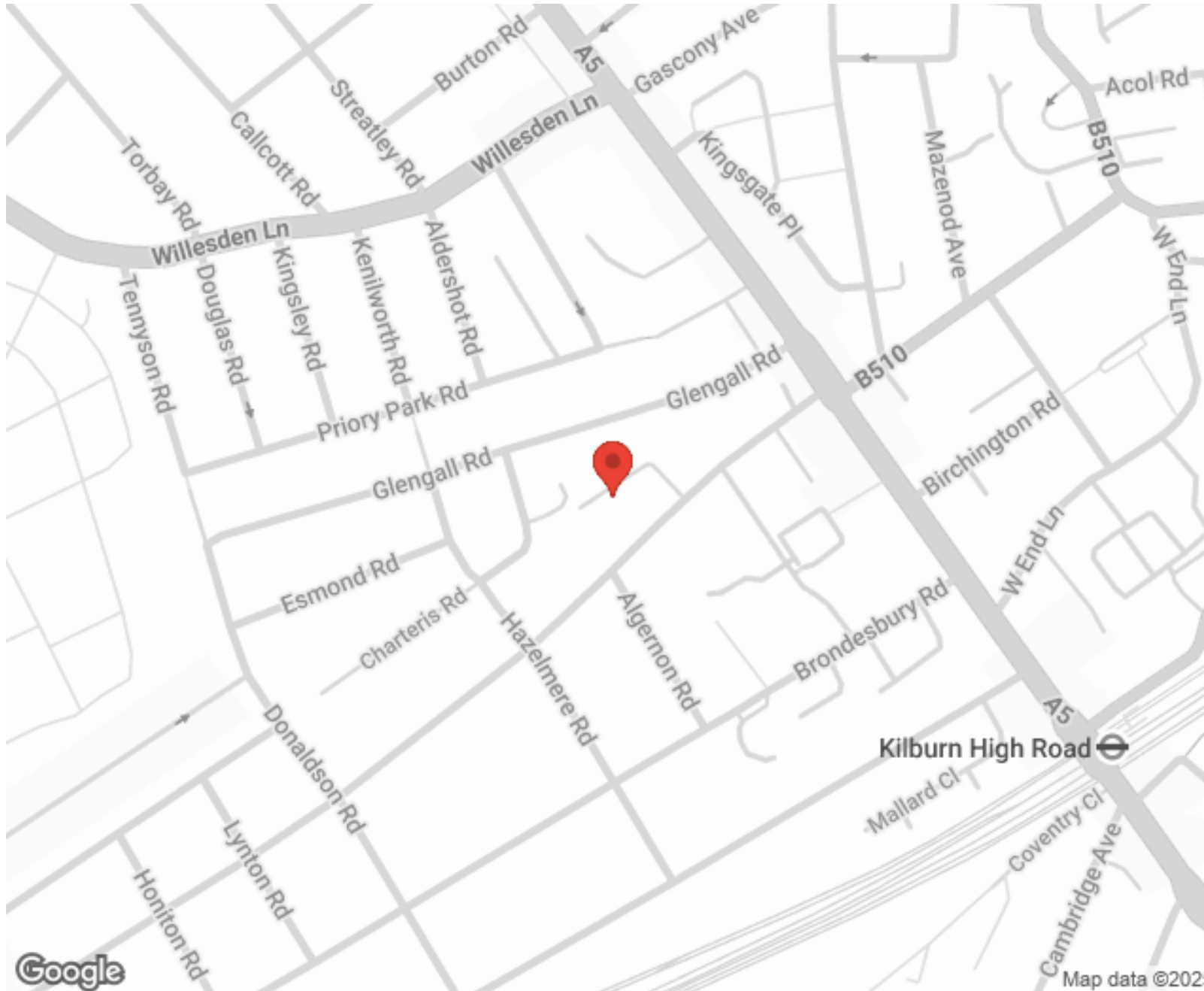
"I used Vita properties to find a flat recently and it was an overall professional, personalised and positive experience. Saira went the extra mile to accommodate to our needs and quick to help us whenever possible."



**MORE INFO, PICTURES,
CONTACT ON
OUR WEBSITE**



"Vita Properties is a very professional agency. My experience with them was incredible and the entire team was very helpful and kind throughout the renting process. I'd highly recommend!"



SCAN FOR MORE
GOOGLE REVIEWS



Google




4.9 Stars | 132 Reviews

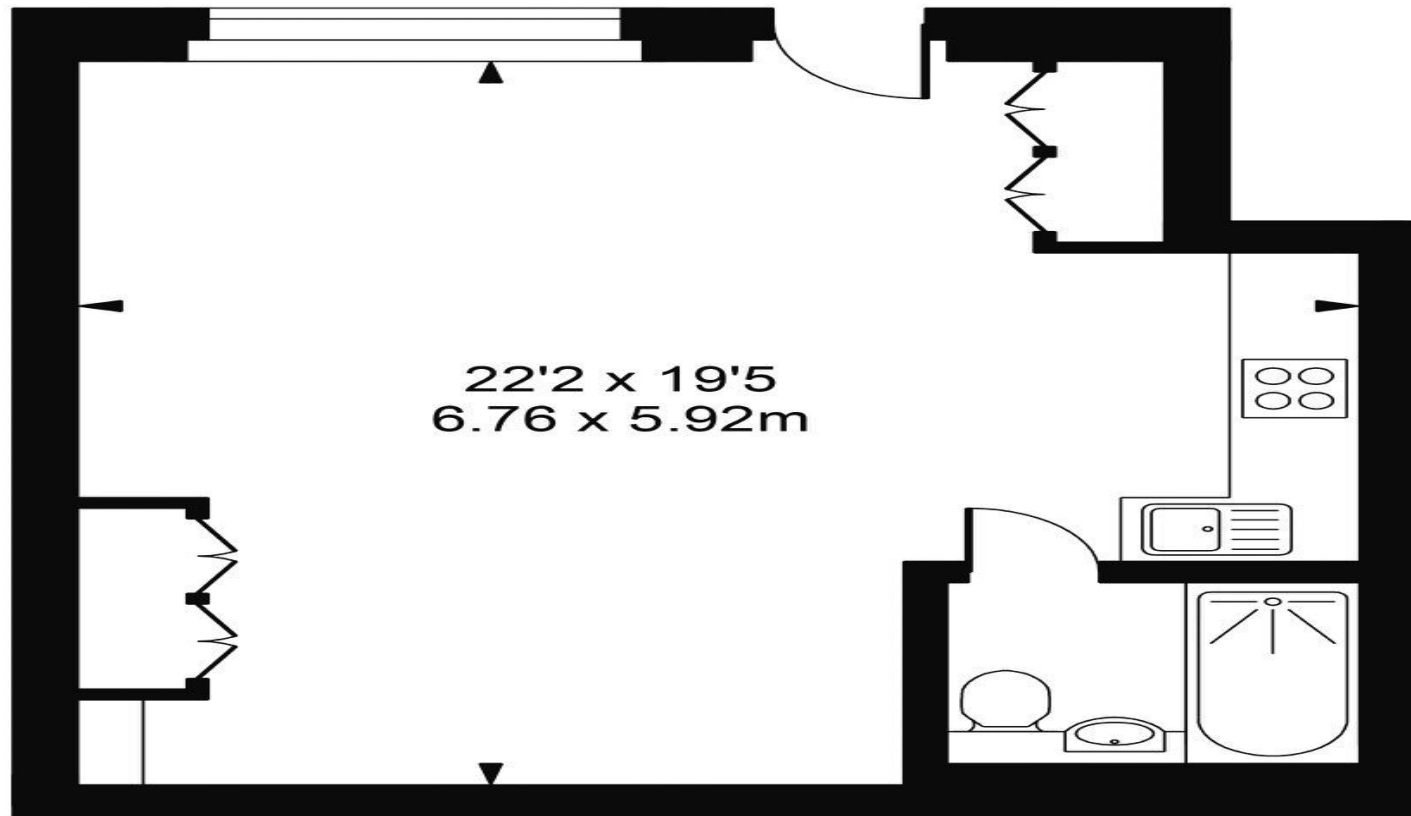
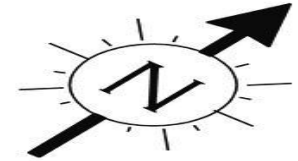
Find us on social media

 vitaproperties

 VitaProperties

 VitaProperties

Victoria Mews



Ground Floor



Approx Gross Internal Area 420 Sq Ft - 39.02 Sq M

FOR ILLUSTRATIVE PURPOSES ONLY. NOT TO SCALE.

Whilst every attempt has been made to ensure the accuracy of the floorplan shown, all measurements, positioning, fixtures, fittings and any other data shown are an approximate interpretation for illustrative purposes only and are not to scale. No responsibility is taken for any error, omission, miss-statement or use of data shown.

Floor plan by www.bestangle.co.uk