



Heath Drive, Hampstead, London, NW3 .| £2,500

- Sensational Property
- Abundance of Character Features
- Large Swimming Pool
- Space for 3 cars

- Available Immediately

"Vita Properties have been tremendously helpful throughout the process of securing/renting my flat. Informative about the property, prompt communication, easy to use dashboard for sharing of information, and pleasant to work with. Highly recommend!"

This five bed, three bath apartment is a true sensation. Benefitting from its own private entrance and set across three floors this apartment boasts a truly impressive 7071 Sq Ft of luxuriously appointed living space; absolutely bursting with character features.

Outside you have a large wrap-around garden with children's play area, feature pond, double garage and additional off-street parking.

Inside you have the main reception room, benefitting from beautiful Georgian windows, a marble fireplace and access onto the conservatory which boasts a built-in bar. Some of the beautiful features on this floor include gorgeous marble pillars, hand-painted ceilings and a pleasing mixture of both marble and hardwood flooring. You also have a further reception room on the ground floor, a large kitchen-diner as well as a separate dining room. You have five bedrooms; the master has an en-suite as well as a huge walk-in wardrobe and two of the other bedrooms benefit from en-suites and large fitted wardrobes.

If it wasn't all sounding amazing enough already, downstairs is where it gets truly impressive. Large indoor swimming pool, jacuzzi, gymnasium, sauna and utility room!

This apartment is situated on a beautiful tree lined street within walking distance of Hampstead Station (Northern Line) and all the shops, bars and restaurants of Hampstead Village.

🏠 Flat  
🔑 Available  
to Let  
🛏 x 5+  
🛁 x 4  
🚿 x 5+



Oliver Kent

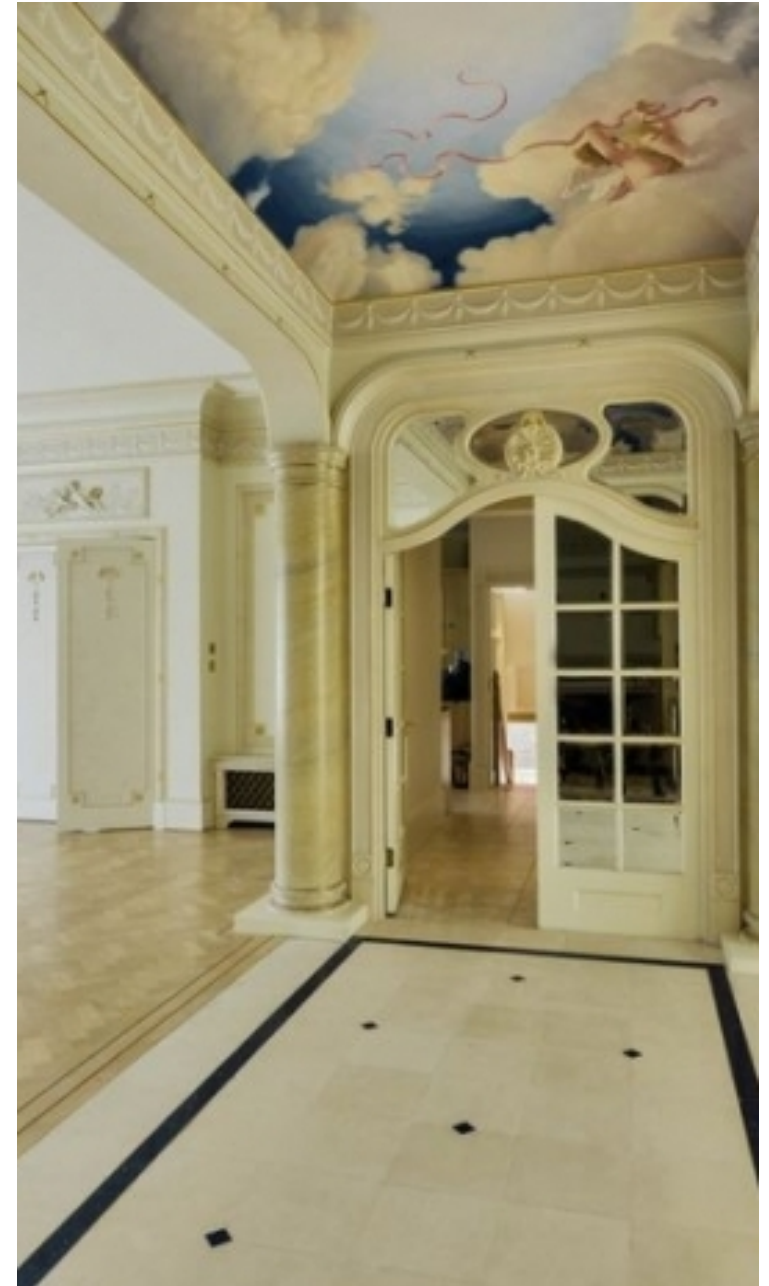
✉ oliver.kent@vitaproperties.uk  
☎ +4477 7274 0351





"I was very impressed with Vita and their network of buyers. When the sale of my flat fell through (twice) they worked extremely hard to find new buyers in a difficult market - thank you!"

---



"Working with Vita properties has been a smooth experience! No complaints at all. Our letting agent, Diana has been fantastic and very helpful throughout the whole process. I would highly recommend both Vita properties and Diana."

---





"I used Vita properties to find a flat recently and it was an overall professional, personalised and positive experience. Saira went the extra mile to accommodate to our needs and quick to help us whenever possible."

---

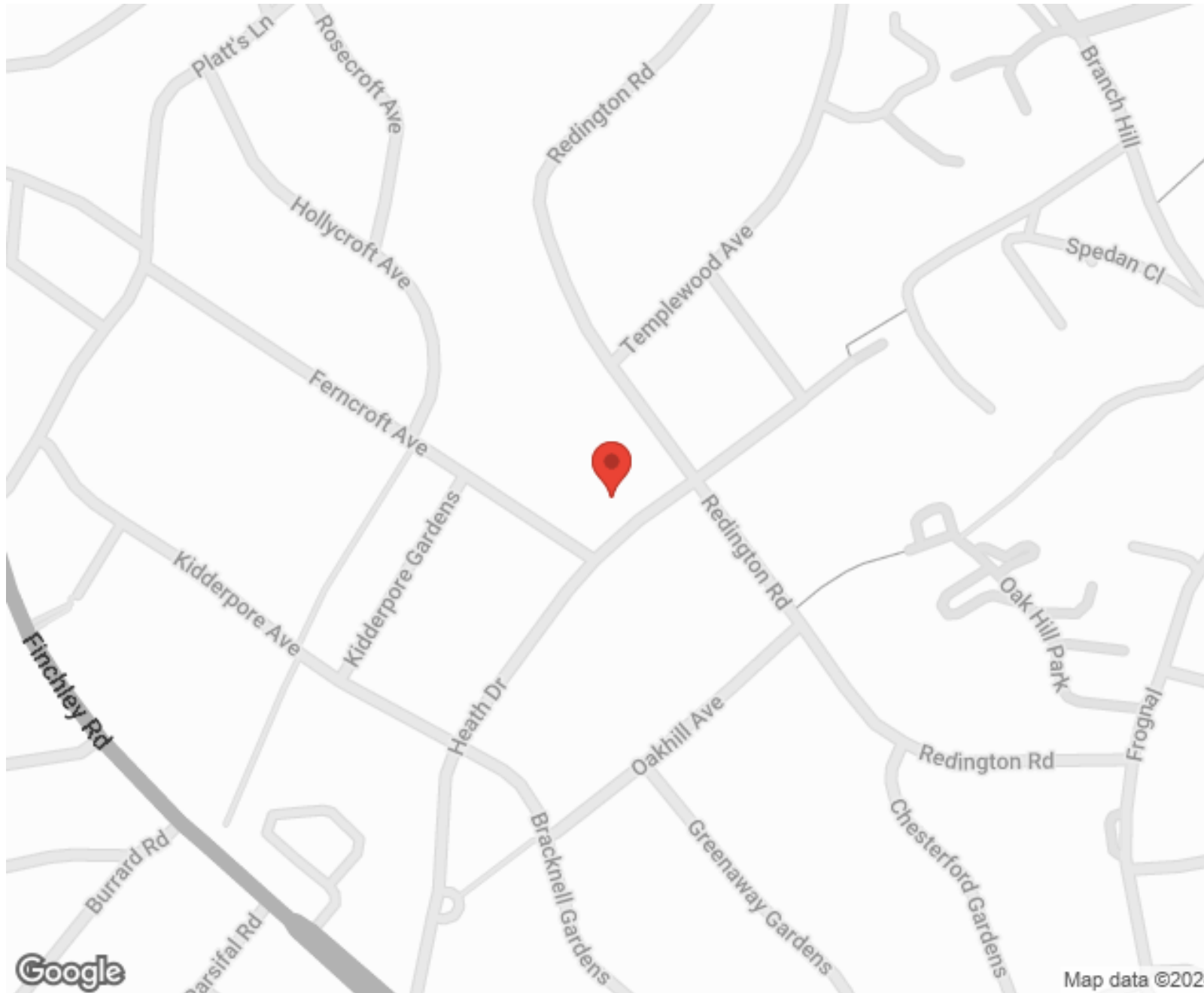


MORE INFO, PICTURES,  
CONTACT ON  
OUR WEBSITE



"Vita Properties is a very professional agency. My experience with them was incredible and the entire team was very helpful and kind throughout the renting process. I'd highly recommend!"

---



SCAN FOR MORE  
GOOGLE REVIEWS




Google




4.9 Stars | 132 Reviews

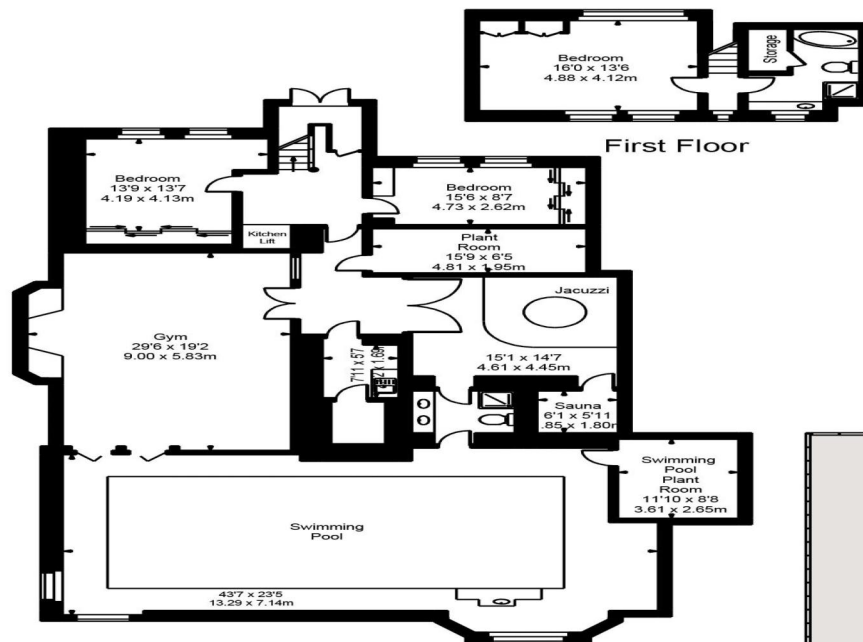
Find us on social media

 vitaproperties

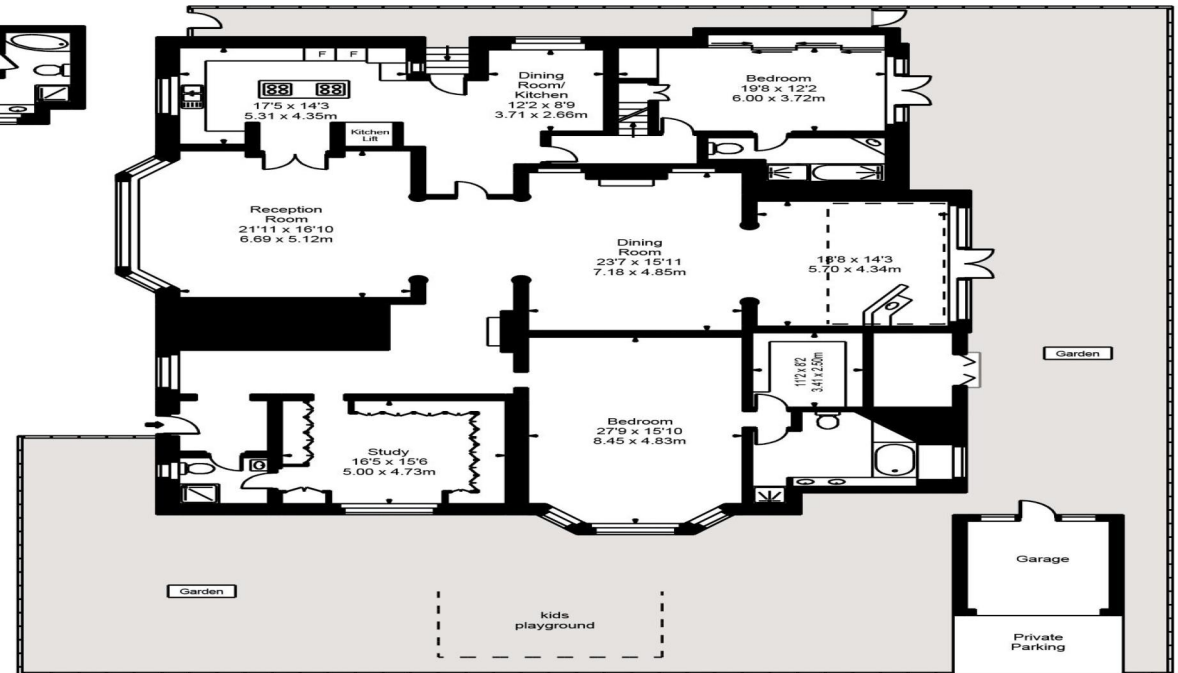
 VitaProperties

 VitaProperties

# Heath Drive



Lower Ground Floor



Approx Gross Internal Area **7071 Sq Ft - 656.89 Sq M**

FOR ILLUSTRATIVE PURPOSES ONLY. NOT TO SCALE.

Whilst every attempt has been made to ensure the accuracy of the floorplan shown, all measurements, positioning, fixtures, fittings and any other data shown are an approximate interpretation for illustrative purposes only and are not to scale. No responsibility is taken for any error, omission, miss-statement or use of data shown. Floor plan by [www.bestangle.co.uk](http://www.bestangle.co.uk)