



Daleham Gardens, Belsize Park, London, NW3 .| £550

-
- Available immediately
 - Air conditioning
 - Shared garden
 - Unfurnished
 - Two double bedrooms, Two bathrooms
 - Council tax - E - £1634 per annum
 - A video walkthrough available

"Vita Properties have been tremendously helpful throughout the process of securing/renting my flat. Informative about the property, prompt communication, easy to use dashboard for sharing of information, and pleasant to work with. Highly recommend!"

Available immediately - We are pleased to offer this recently renovated 2 bedroom 2 bathroom apartment. Located on the raised ground floor of a period Property in one of Belsize Park's most sought after locations, comprising of two double bedrooms, 2 modern bathrooms, a semi open plan kitchen, bright and spacious living room and the extra benefit of access to a shared garden and air conditioning.






Close to transport links and local amenities, this apartment is a must see!



Oliver Kent

✉ oliver.kent@vitaproperties.uk
☎ +4477 7274 0351

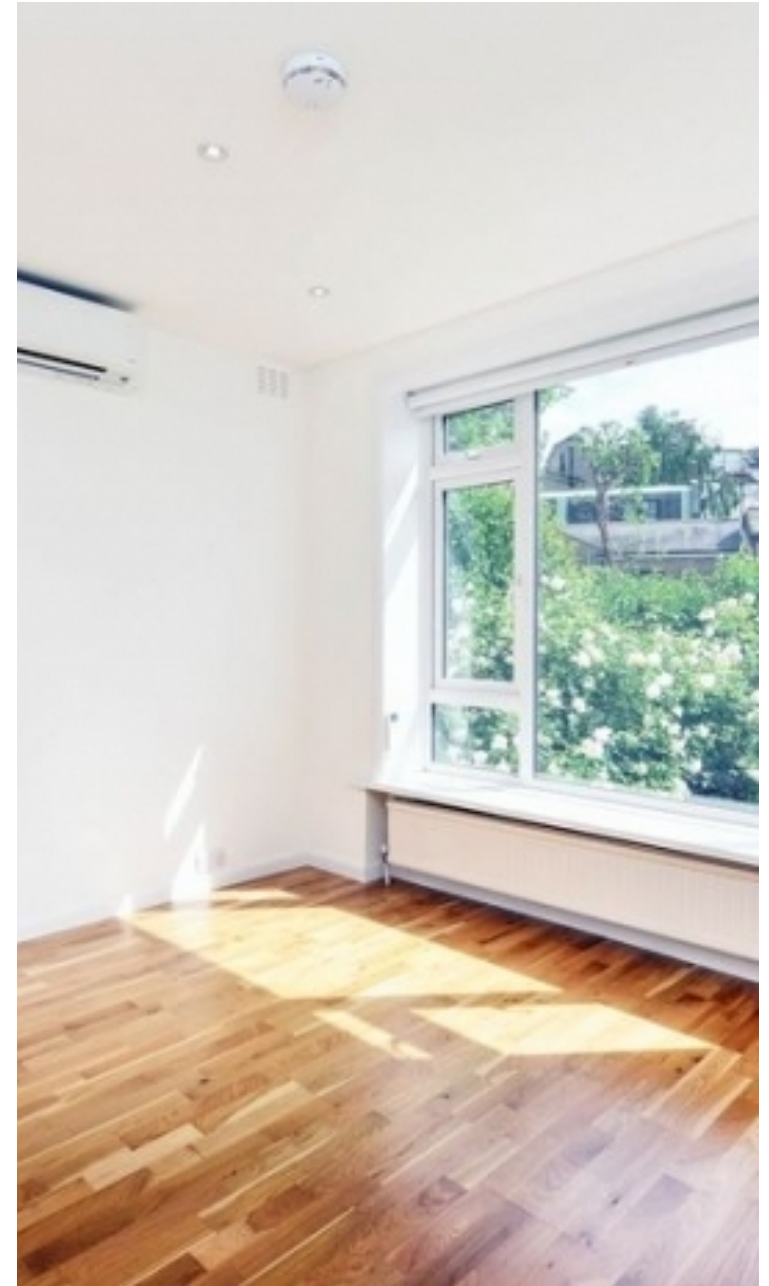


 Flat
 Let STC
 x 2
 x 1
 x 2

SCAN FOR
A VIDEO
WALKTHROUGH



"I was very impressed with Vita and their network of buyers. When the sale of my flat fell through (twice) they worked extremely hard to find new buyers in a difficult market - thank you!"



"Working with Vita properties has been a smooth experience! No complaints at all. Our letting agent, Diana has been fantastic and very helpful throughout the whole process. I would highly recommend both Vita properties and Diana."



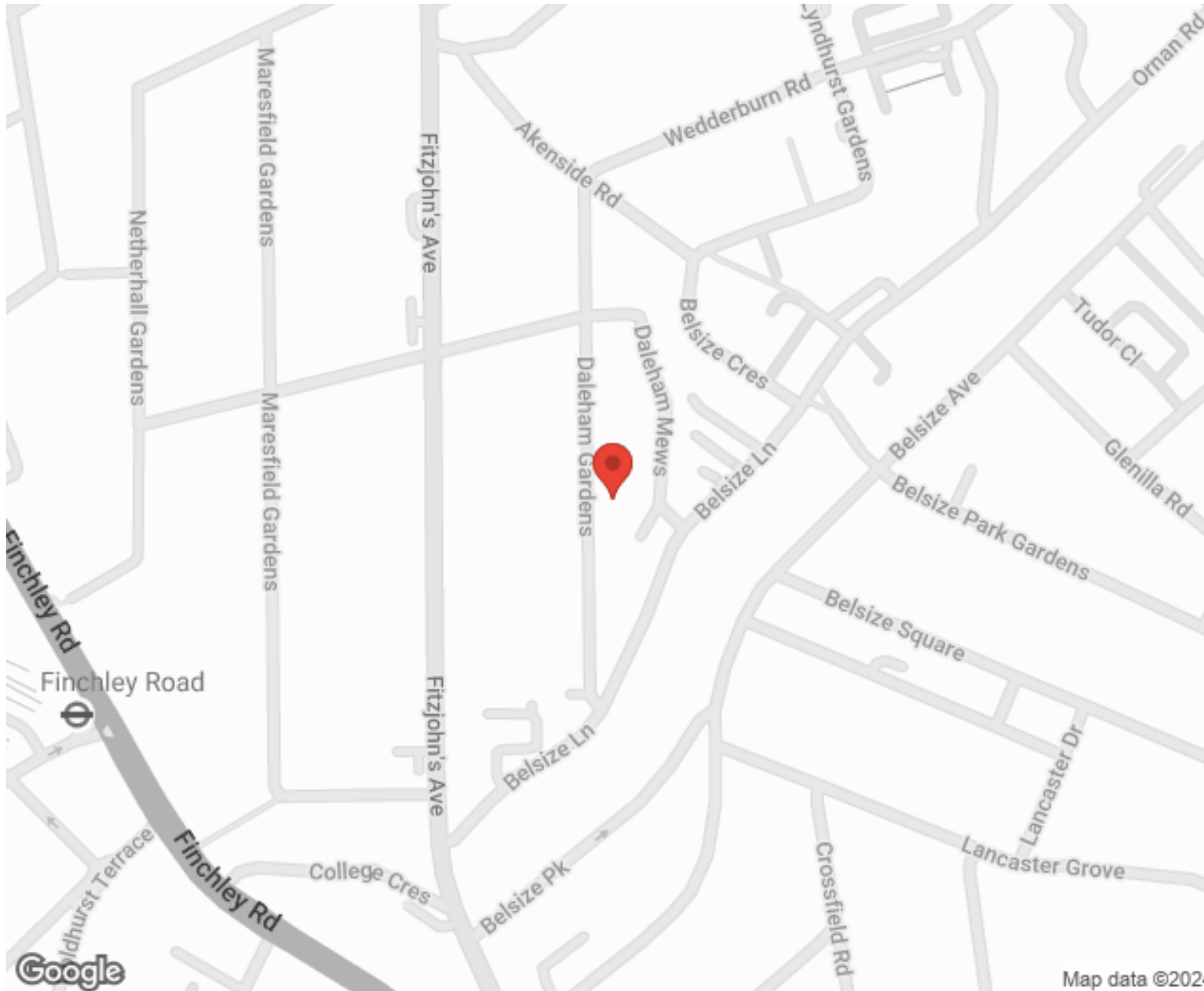
"I used Vita properties to find a flat recently and it was an overall professional, personalised and positive experience. Saira went the extra mile to accommodate to our needs and quick to help us whenever possible."



MORE INFO, PICTURES,
CONTACT ON
OUR WEBSITE



"Vita Properties is a very professional agency. My experience with them was incredible and the entire team was very helpful and kind throughout the renting process. I'd highly recommend!"



SCAN FOR MORE
GOOGLE REVIEWS



Google

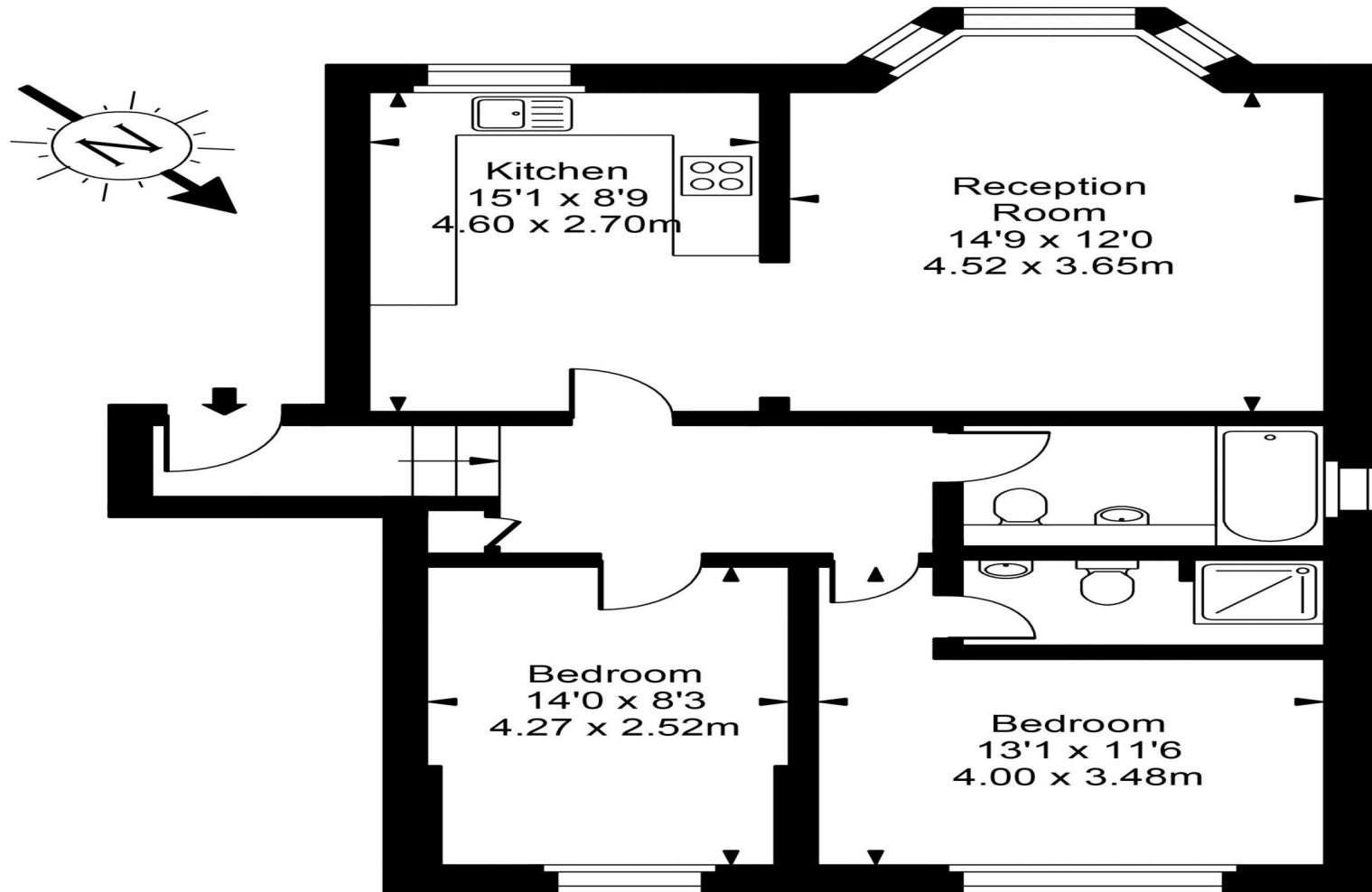


4.9 Stars | 132 Reviews

Find us on social media



Daleham Gardns



Ground Floor

Approx Gross Internal Area **782 Sq Ft - 72.66 Sq M**



FOR ILLUSTRATIVE PURPOSES ONLY. NOT TO SCALE.

Whilst every attempt has been made to ensure the accuracy of the floorplan shown, all measurements, positioning, fixtures, fittings and any other data shown are an approximate interpretation for illustrative purposes only and are not to scale. No responsibility is taken for any error, omission, miss-statement or use of data shown.
Floor plan by www.bestangle.co.uk