



St Johns Wood Park, St Johns Wood, London, NW8 .| £850

- Parking
- Porter
- Lift
- Balcony

- 7th Floor
- Modern
- Available 23 June 2017

"Vita Properties have been tremendously helpful throughout the process of securing/renting my flat. Informative about the property, prompt communication, easy to use dashboard for sharing of information, and pleasant to work with. Highly recommend!"

Available 23 June 2017 - We are delighted to offer for rent this stunning newly refurbished three bedroom, two bathroom apartment located on the seventh floor of the prestigious portered block in St Johns Wood. The apartment benefits from a luxury fitted open plan kitchen to the reception room with magnificent views from the private balcony, solid wood floors, contemporary bathroom suites, a lift in block & allocated parking. Walsingham is located only moments from both Swiss Cottage and St Johns Wood's amenities.



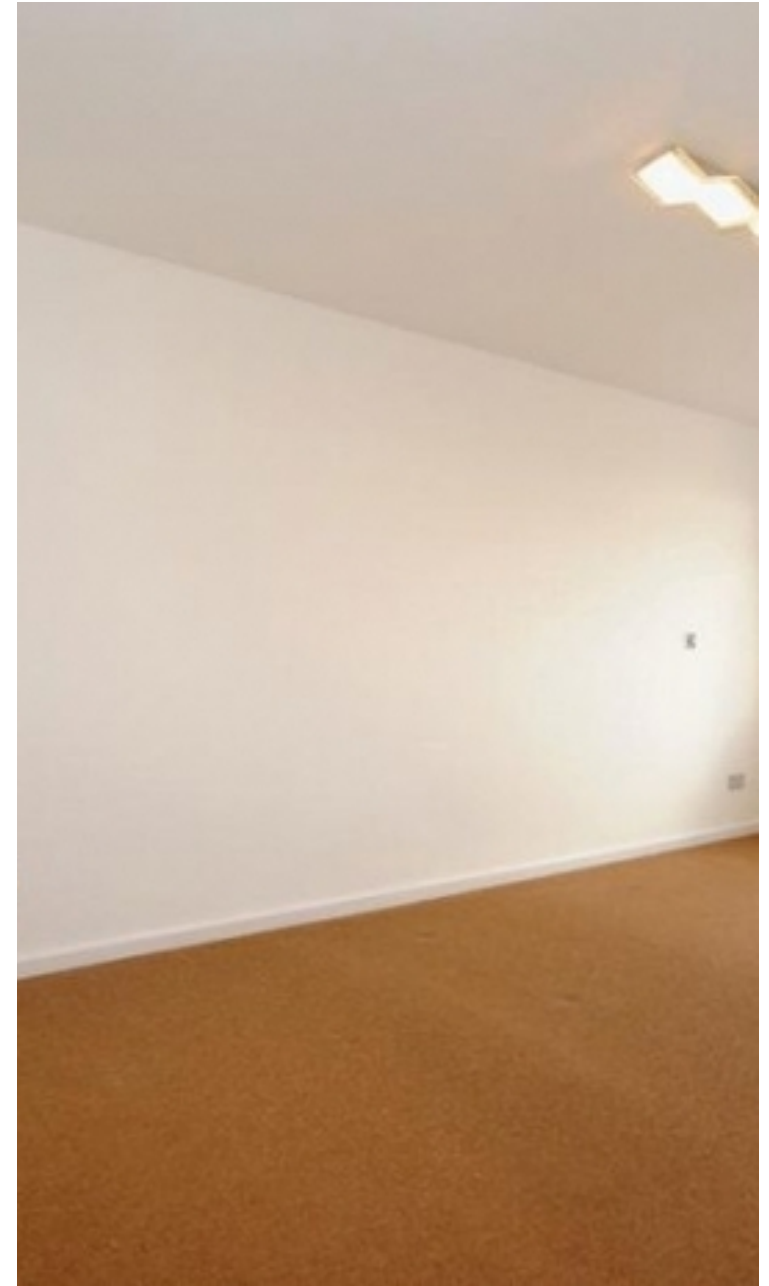
Oliver Kent

✉ oliver.kent@vitaproperties.uk
☎ +4477 7274 0351



🏠 Flat
🔑 Available
to Let
🛏 x 3
🚿 x 1
🚿 x 2

"I was very impressed with Vita and their network of buyers. When the sale of my flat fell through (twice) they worked extremely hard to find new buyers in a difficult market - thank you!"



"Working with Vita properties has been a smooth experience! No complaints at all. Our letting agent, Diana has been fantastic and very helpful throughout the whole process. I would highly recommend both Vita properties and Diana."



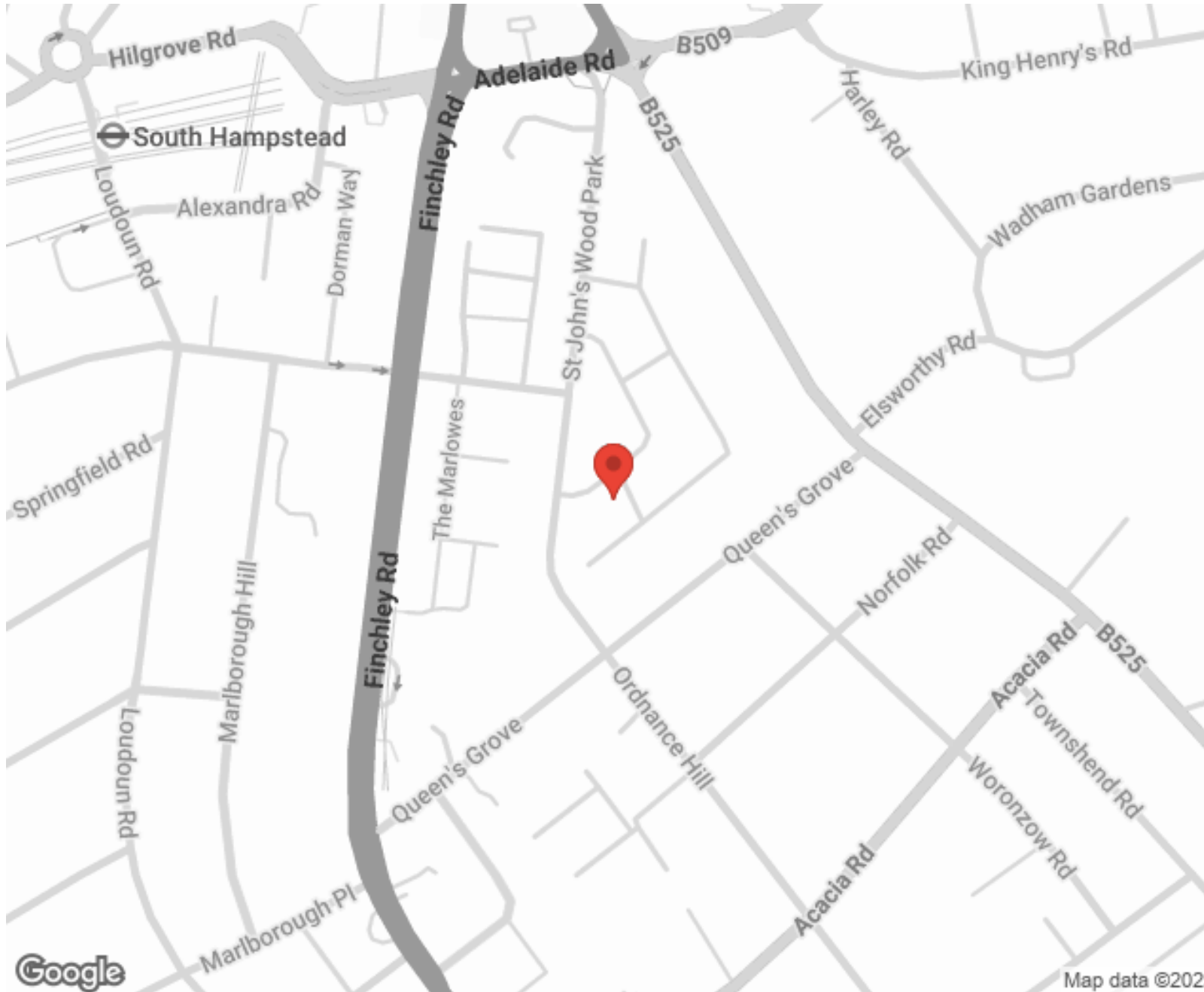
"I used Vita properties to find a flat recently and it was an overall professional, personalised and positive experience. Saira went the extra mile to accommodate to our needs and quick to help us whenever possible."



MORE INFO, PICTURES,
CONTACT ON
OUR WEBSITE



"Vita Properties is a very professional agency. My experience with them was incredible and the entire team was very helpful and kind throughout the renting process. I'd highly recommend!"



SCAN FOR MORE
GOOGLE REVIEWS



Google



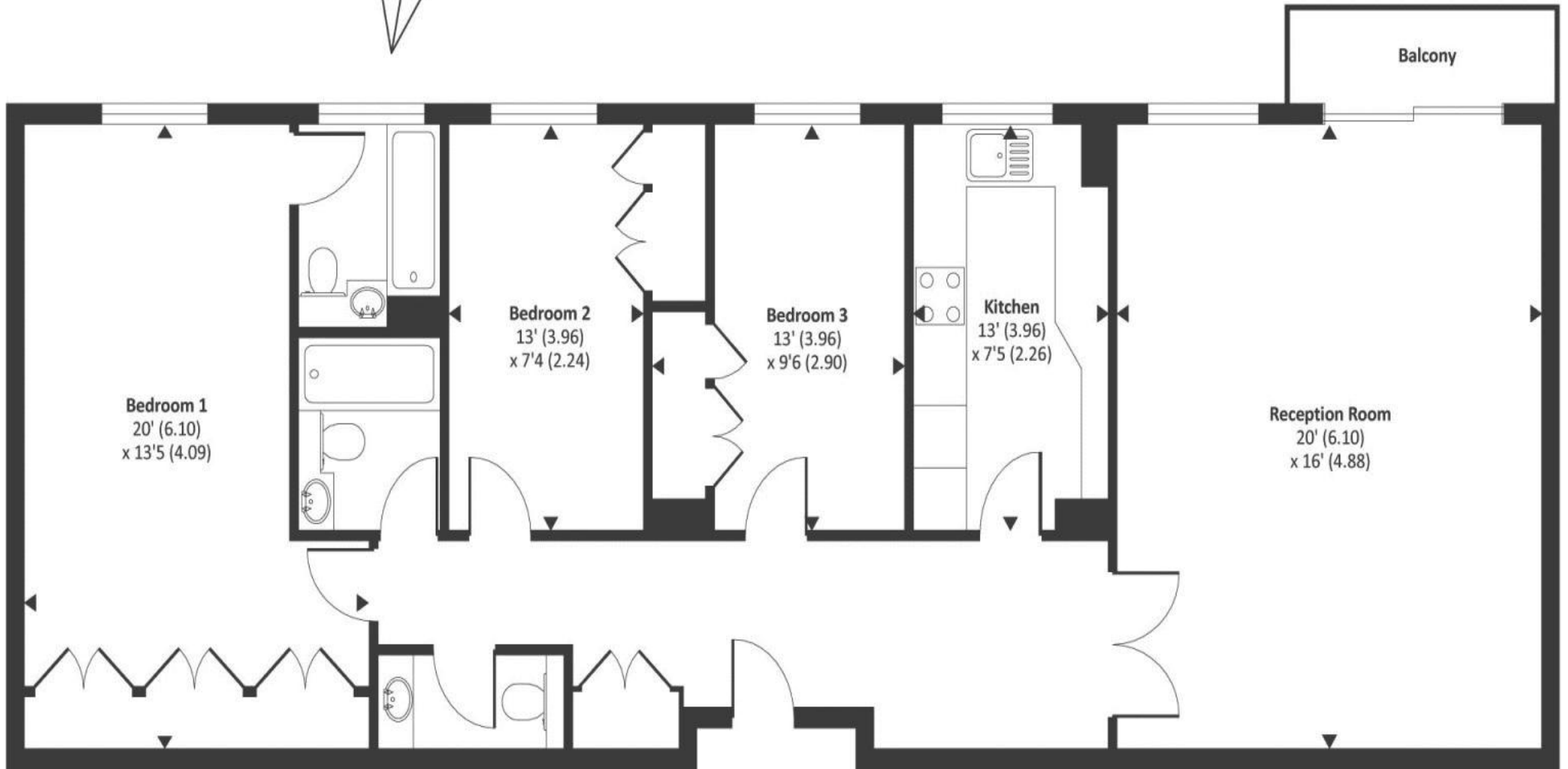
4.9 Stars | 132 Reviews

Find us on social media

 vitaproperties

 VitaProperties

 VitaProperties



Seventh floor

Approx. Gross internal floor area 1135 SQFT / 105.4 SQM