



Westfield Lodge, 302 Finchley Road, Hampstead, London, NW3 .| £850

- Parking & Porter
- Gym & Swimming Pool
- Modern Finish
- Moment to Hampstead, West Hampstead and Finchley Road

- Offered furnished or unfurnished
- *The furniture in the photos were the previous owners

"Vita Properties have been tremendously helpful throughout the process of securing/renting my flat. Informative about the property, prompt communication, easy to use dashboard for sharing of information, and pleasant to work with. Highly recommend!"

We are delighted to offer as MAIN AGENTS this truly stunning and exceptional FOUR DOUBLE BEDROOM First Floor Split Apartment situated within one of Hampstead's finest modern developments. The property comprises 1600 sq ft approx and benefits Three beautifully designed under floor heated contemporary Bathrooms with (TWO Ensuite) all with Hansgrohe raindance showers and Duvarit sanitary ware, brand new German Kitchen with Corian composite worktops including Bespoke Italian stone tiles with Siemens appliances, Home Automation throughout operated via iPad or Android phone with remote lighting and heating control, a large Reception Room/Dining Room, Home Cinema with 5.1 THX surround sound, speakers by Monitor Audio and hi-fi in every room with Sonos Compatibility.

Westfield also boasts a leisure complex that includes an indoor swimming pool, sauna, jacuzzi and a gymnasium as well as a 24 hour Concierge, stunning communal gardens and secure underground parking



Oliver Kent

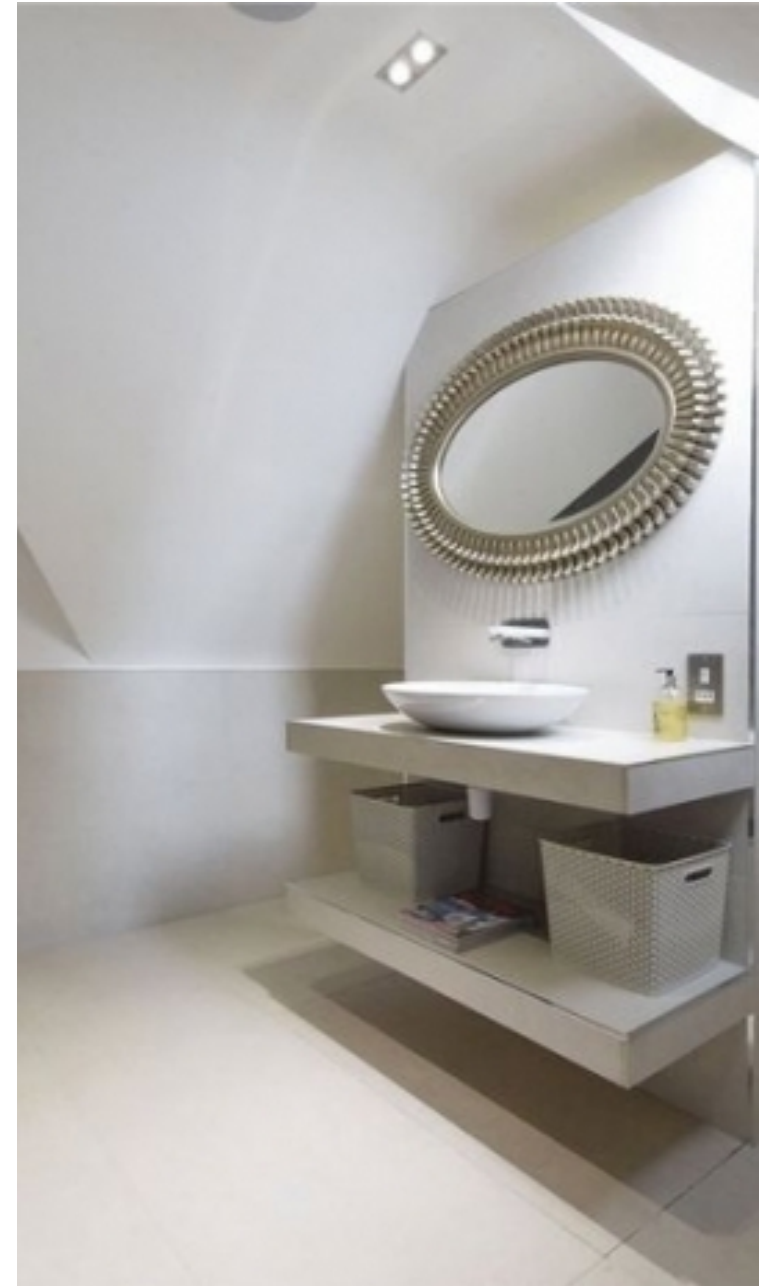
✉ oliver.kent@vitaproperties.uk
☎ +4477 7274 0351



 Flat
 Available
to Let
 x 4
 x 1
 x 2



"I was very impressed with Vita and their network of buyers. When the sale of my flat fell through (twice) they worked extremely hard to find new buyers in a difficult market - thank you!"



"Working with Vita properties has been a smooth experience! No complaints at all. Our letting agent, Diana has been fantastic and very helpful throughout the whole process. I would highly recommend both Vita properties and Diana."



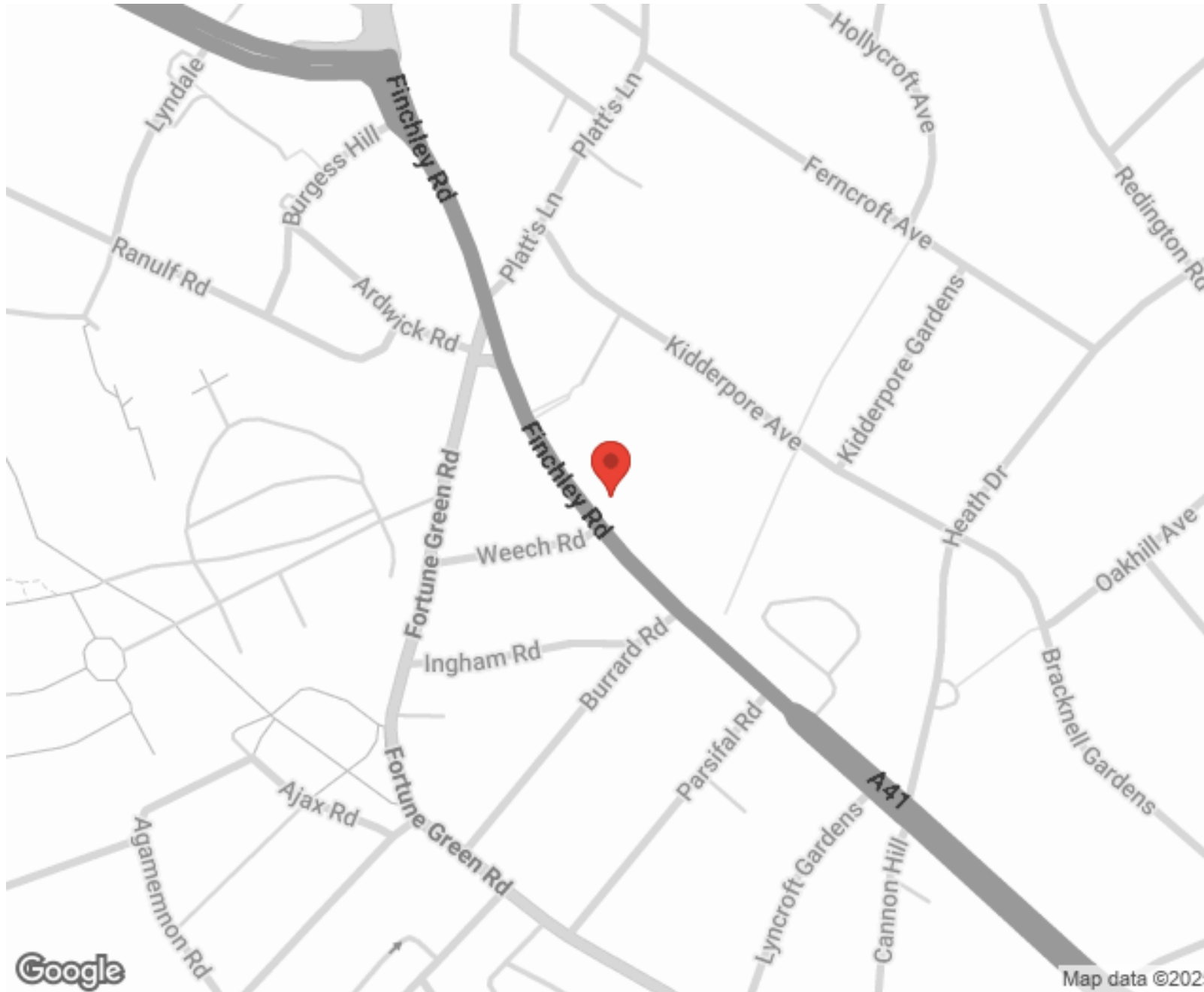
"I used Vita properties to find a flat recently and it was an overall professional, personalised and positive experience. Saira went the extra mile to accommodate to our needs and quick to help us whenever possible."



**MORE INFO, PICTURES,
CONTACT ON
OUR WEBSITE**



"Vita Properties is a very professional agency. My experience with them was incredible and the entire team was very helpful and kind throughout the renting process. I'd highly recommend!"



SCAN FOR MORE
GOOGLE REVIEWS




Google



4.9 Stars | 132 Reviews

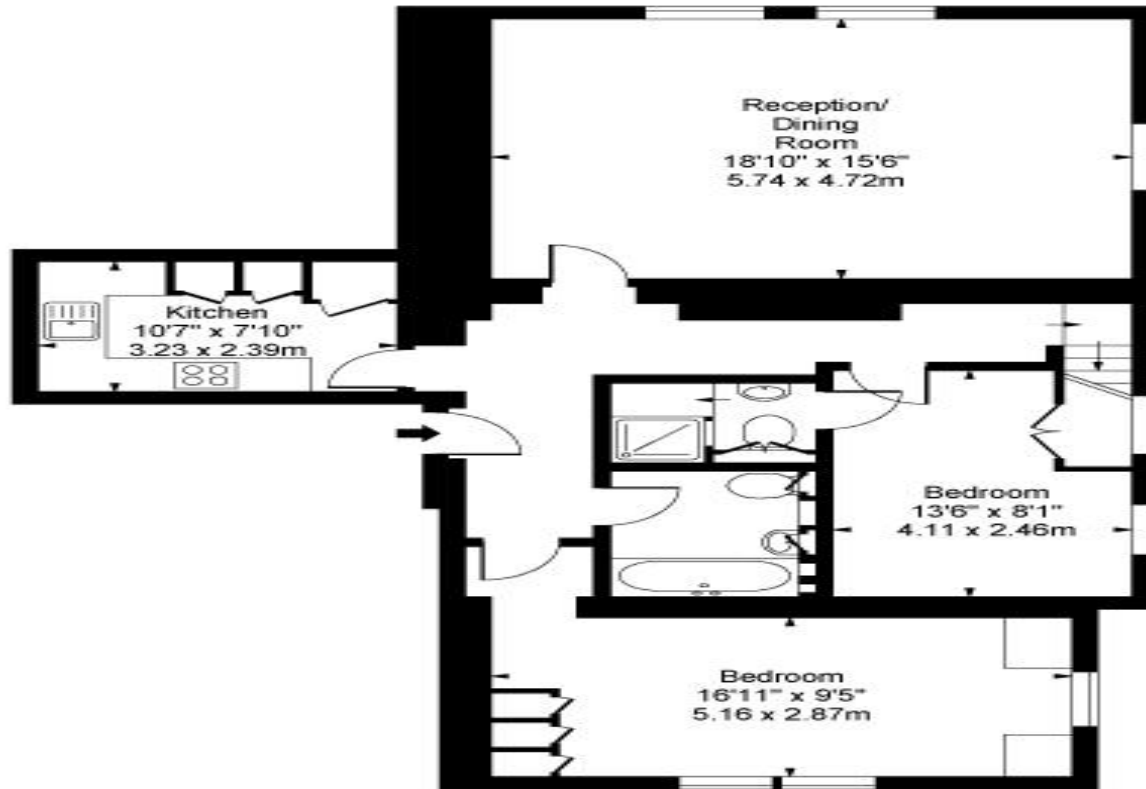
Find us on social media

 vitaproperties

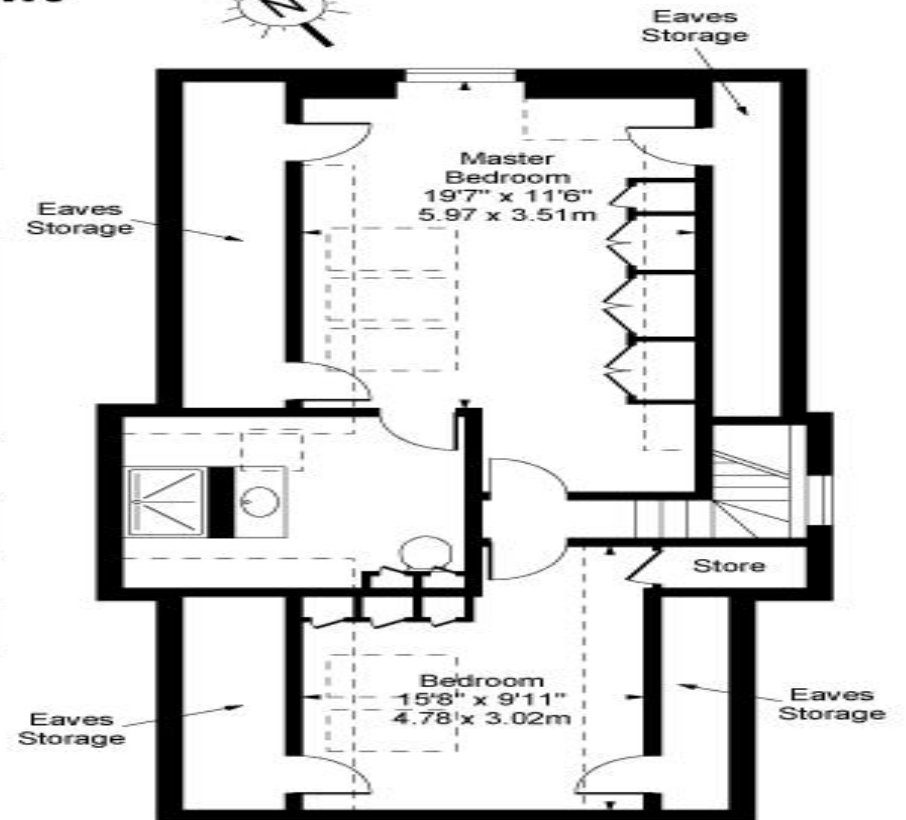
 VitaProperties

 VitaProperties

**Westfield Lodge,
Finchley Road, NW3**



First Floor



Second Floor

Approx Gross Internal Area 1500 Sq Ft - 139.35 Sq M
(Excluding Eaves Storage)

For Illustration Purposes Only - Not To Scale
www.goldlens.co.uk
Prepared for Chestertons
Ref. No. 002071