



## Lyndhurst Road, Hampstead, London, NW3 .| £925

- Seconds to Hampstead Heath
- South facing balcony
- Study or single bedroom
- A fully fitted modern kitchen

- Easy access to the many shops, cafes and boutiques of Hampstead High street and Belsize Park
- Council tax - G - £2201 per annum

"Vita Properties have been tremendously helpful throughout the process of securing/renting my flat. Informative about the property, prompt communication, easy to use dashboard for sharing of information, and pleasant to work with. Highly recommend!"

---

Available immediately - A beautifully designed style three bedroom apartment situated in a period conversion in the heart of Hampstead Village. The apartment boasts great entertaining space with a large reception room and separate dining room leading out onto a beautiful sun terrace with spectacular views. The property further boasts a large master bedroom, two bathrooms (one en-suite) and a guest WC.

The property is ideally located for all of Hampstead's amenities and the wide open spaces of the Heath



Oliver Kent

✉ [oliver.kent@vitaproperties.uk](mailto:oliver.kent@vitaproperties.uk)  
☎ +4477 7274 0351



🏠 Flat  
🔑 Available  
to Let  
🛏 x 3  
🛎 x 2  
🚿 x 2



"I was very impressed with Vita and their network of buyers. When the sale of my flat fell through (twice) they worked extremely hard to find new buyers in a difficult market - thank you!"

---



"Working with Vita properties has been a smooth experience! No complaints at all. Our letting agent, Diana has been fantastic and very helpful throughout the whole process. I would highly recommend both Vita properties and Diana."

---





"I used Vita properties to find a flat recently and it was an overall professional, personalised and positive experience. Saira went the extra mile to accommodate to our needs and quick to help us whenever possible."

---

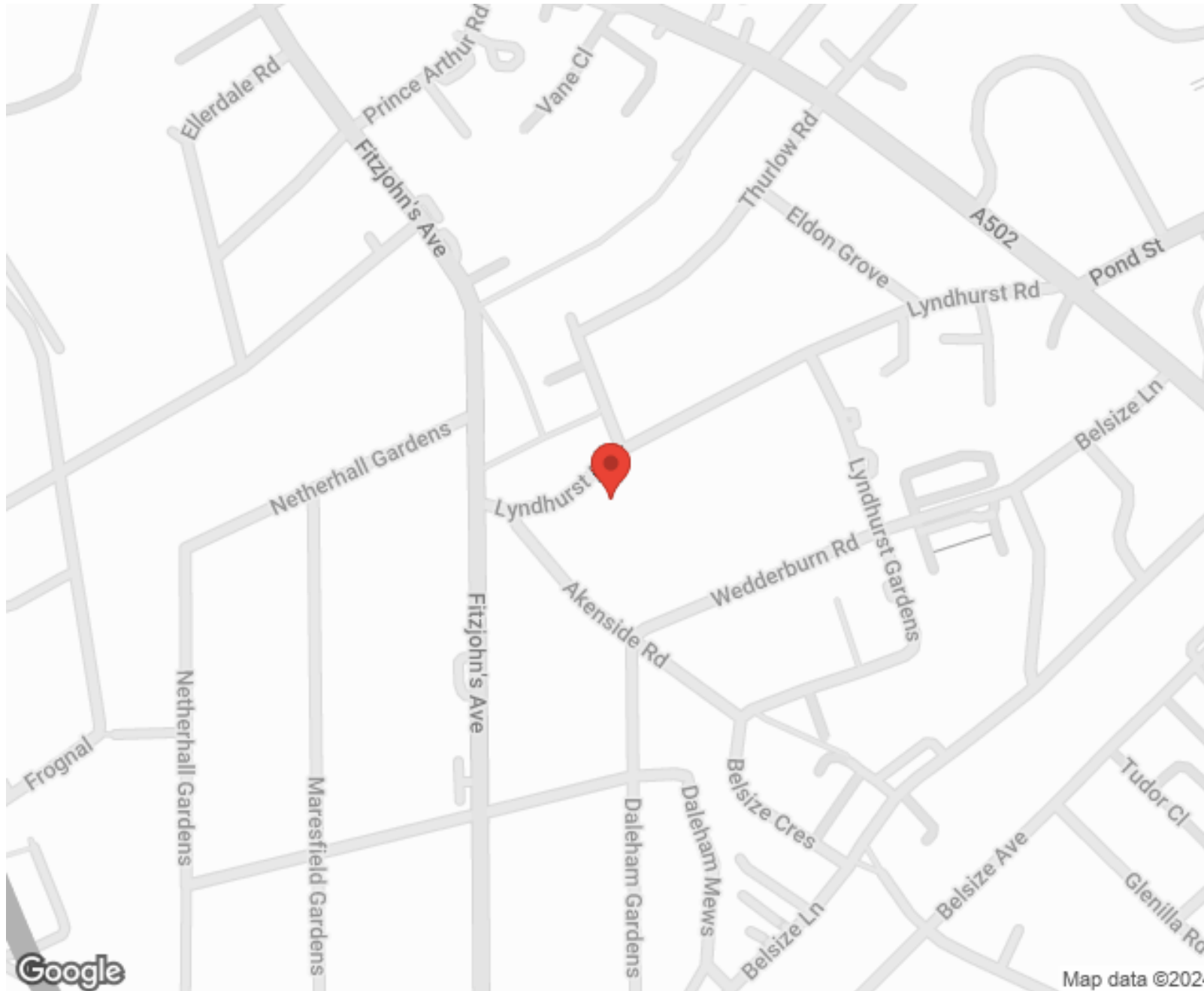


MORE INFO, PICTURES,  
CONTACT ON  
OUR WEBSITE



"Vita Properties is a very professional agency. My experience with them was incredible and the entire team was very helpful and kind throughout the renting process. I'd highly recommend!"

---



SCAN FOR MORE  
GOOGLE REVIEWS



Google



4.9 Stars | 132 Reviews

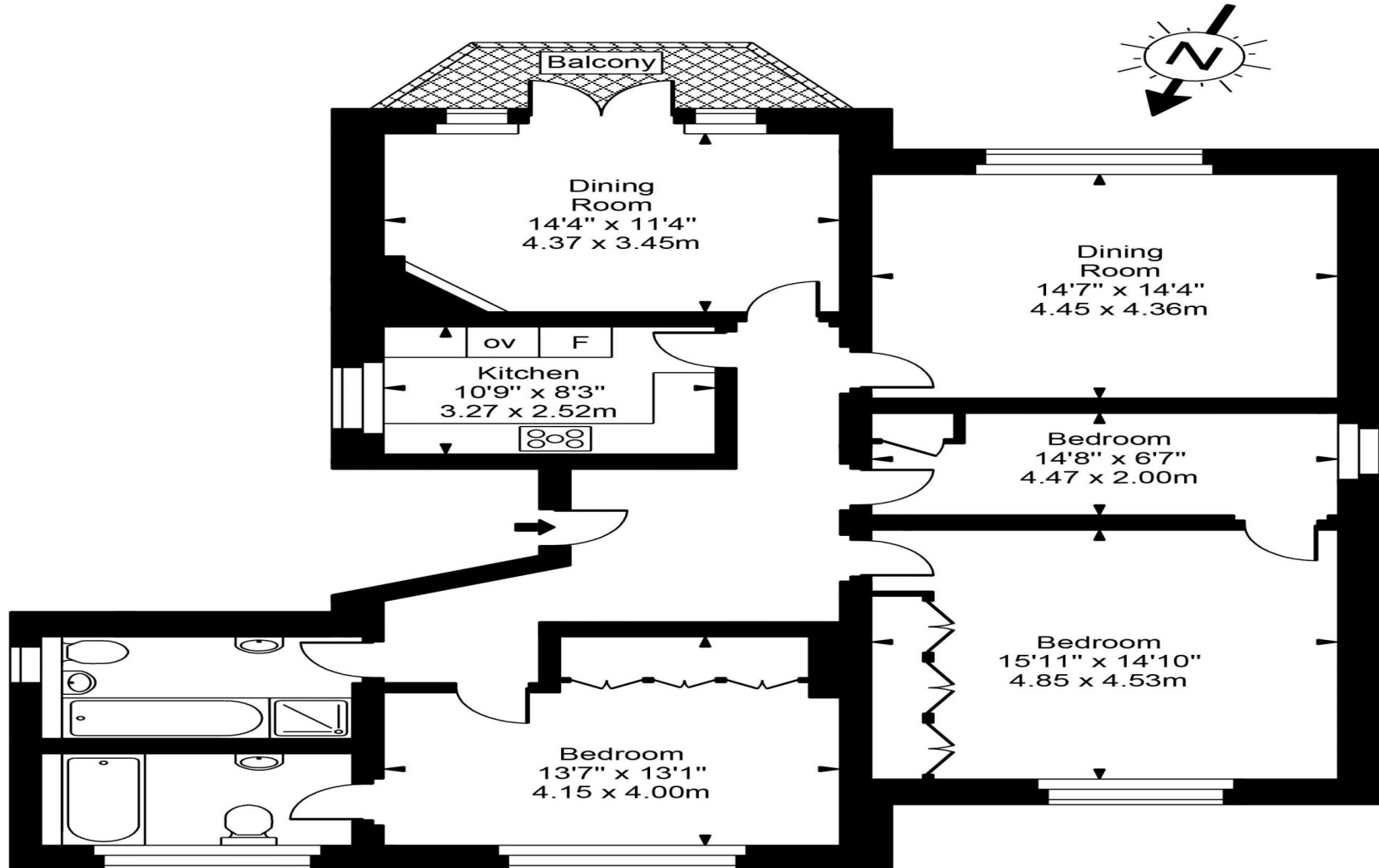
Find us on social media

 vitaproperties

 VitaProperties

 VitaProperties

Lyndhurst Road



First Floor



Approx Gross Internal Area    **1378 Sq Ft - 128.02 Sq M**

For Illustration Purposes Only - Not To Scale  
Floor plan by [www.creativeplanetlk.com](http://www.creativeplanetlk.com)