



Westfield Lodge, Finchley Road, Hampstead, London, NW3 | £950,000

- 3.5 meter ceiling heights
- Total rewiring with CAT 6 cabling throughout. TV/Satellite ready in Living room and Master bedroom.
- Hamilton intelligent lighting system
- State of the art electrical fireplace with 3 LED background settings, via a remote control you can control the sound, speed of fire, type
- Classic Cornices with LED throughout
- Camerich interior designed and furniture throughout (optional to keep)
- Chain free

of fire, LED backlights and heat.

"Vita Properties have been tremendously helpful throughout the process of securing/renting my flat. Informative about the property, prompt communication, easy to use dashboard for sharing of information, and pleasant to work with. Highly recommend!"

Situated within this prestigious and highly sought after development, an immaculate and brand newly refurbished interior designed 2 bedroom raised ground floor apartment with 2 exceptional bathrooms. This spacious apartment comprises 868 sq ft, boasts a ceiling height of 3.5 meters and is situated within a converted red brick period house which forms part of the Westfield development. The interior has been meticulously refurbished by its current owner to a very high standard to include superb bathrooms with Hansgrohe sanitary fittings and Italian Catalano sanitary ware. The apartment is fitted with a German Leicht kitchen, 30mm black galaxy granite worktops and splash back, Miele appliances and the latest Quooker fusion pro mixer tap system. The current owner commissioned a lighting architect who installed Onyx stone effect and advance intelligent lighting system throughout the apartment. Westfield is one of Hampstead's premier purpose built developments, situated on Kidderpore Avenue, a quiet residential turning in Hampstead. The development provides benefits

ground parking, 24hr portorage, an indoor swimming pool, gymnasium and landscaped communal gardens. Located moments from the amenities of Finchley Road and within easy reach of the shops, bars and restaurants of West End Lane, Finchley Road is close to a superb range of shops and amenities

- 🏠 Flat
- 🔑
- 🛏 x 2
- 🚿 x 1
- 🚿 x 2



Oliver Kent

✉ oliver.kent@vitaproperties.uk
☎ +4477 7274 0351



such as secure

"I was very impressed with Vita and their network of buyers. When the sale of my flat fell through (twice) they worked extremely hard to find new buyers in a difficult market - thank you!"



"Working with Vita properties has been a smooth experience! No complaints at all. Our letting agent, Diana has been fantastic and very helpful throughout the whole process. I would highly recommend both Vita properties and Diana."



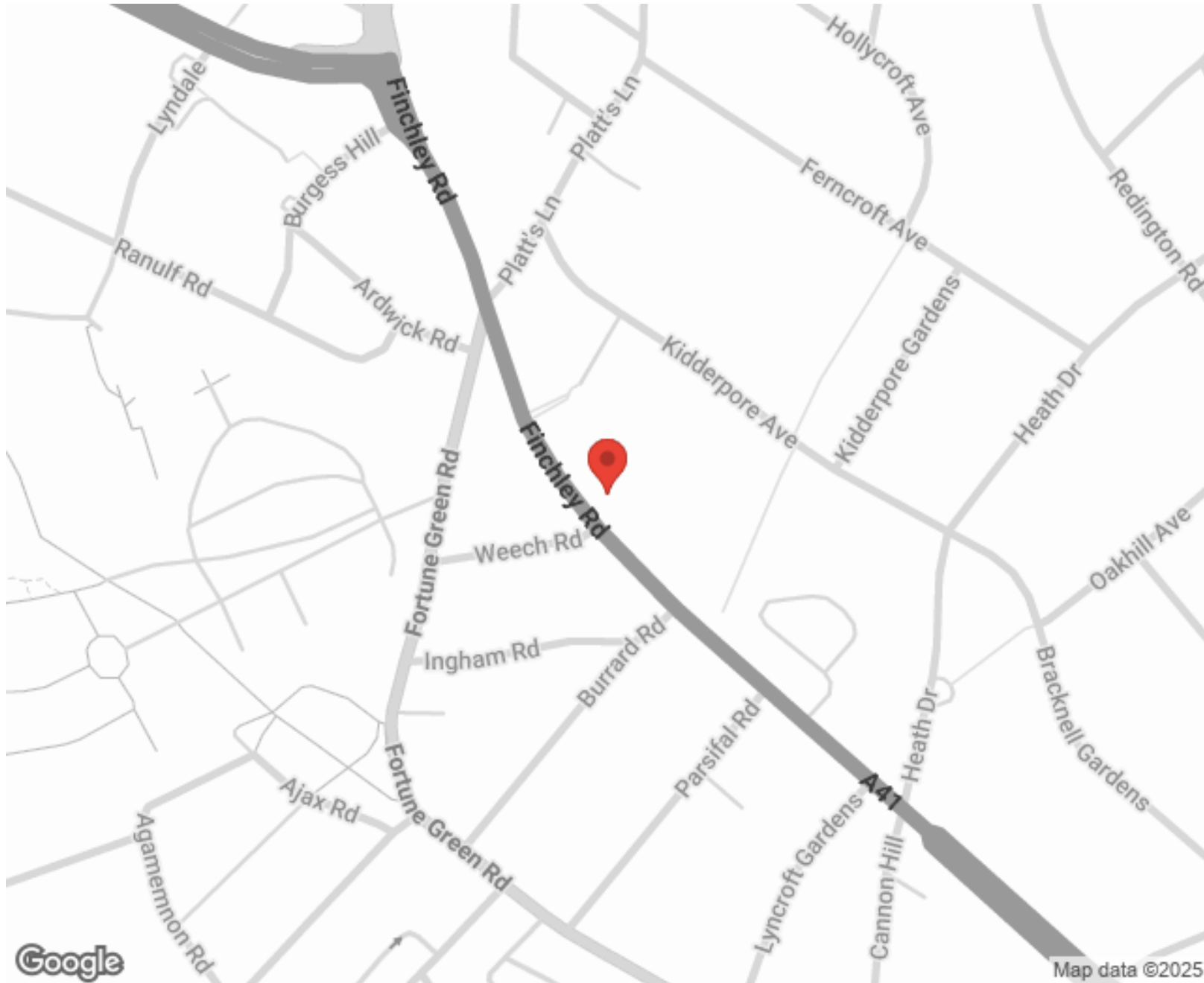
"I used Vita properties to find a flat recently and it was an overall professional, personalised and positive experience. Saira went the extra mile to accommodate to our needs and quick to help us whenever possible."



MORE INFO, PICTURES,
CONTACT ON
OUR WEBSITE



"Vita Properties is a very professional agency. My experience with them was incredible and the entire team was very helpful and kind throughout the renting process. I'd highly recommend!"



SCAN FOR MORE
GOOGLE REVIEWS



Google




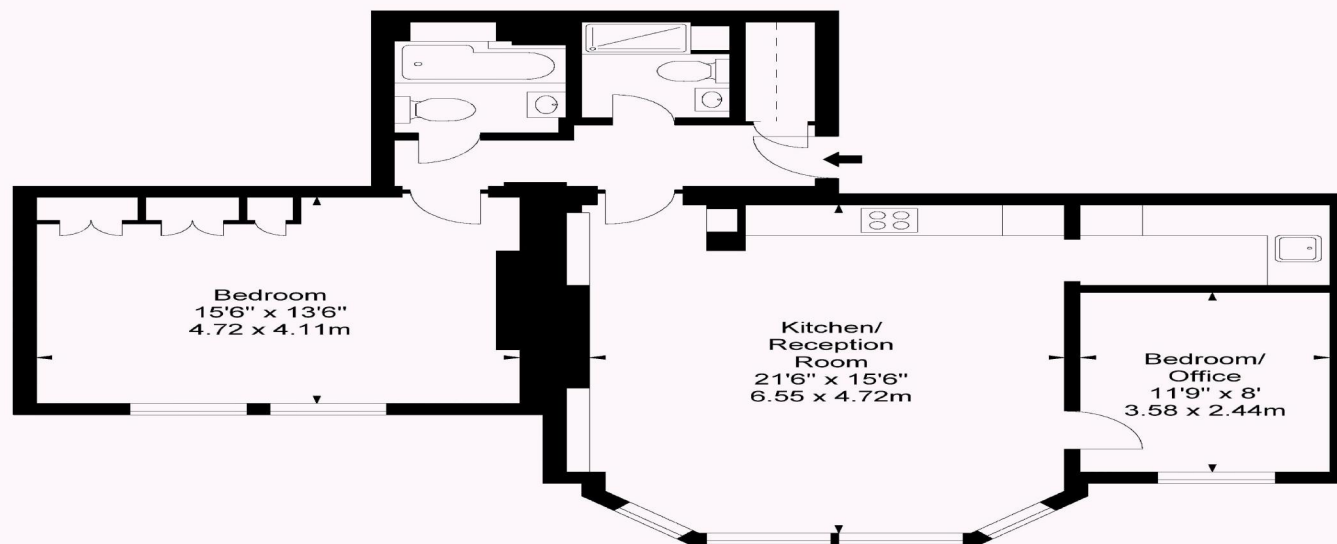
4.9 Stars | 132 Reviews

Find us on social media

 vitaproperties

 VitaProperties

 VitaProperties



GROUND FLOOR

APPROX. GROSS INTERNAL AREA *
868 Ft² - 80.64 M²

Property Details:

**APARTMENT 4
WESTFIELD LODGE
302 FINCHLEY ROAD
NW3**



Plans Drawn: 18.08.2016

Surveyed and Drawn By:

BKR

Sunnyhill House
3-7 Sunnyhill Road
London, SW16 2UG

Tel: 0845 257 2023
Fax: 0845 257 2024
info@bkrfloorplans.co.uk
www.bkrfloorplans.co.uk

© BKR 2016