



Woods Mews, Mayfair, London, W1 .| £3,250






- Newly decorated
- New carpets throughout
- Located in the heart of Mayfair
- Modern finish

- Managed
- Patio
- Garage
- Parking

"Vita Properties have been tremendously helpful throughout the process of securing/renting my flat. Informative about the property, prompt communication, easy to use dashboard for sharing of information, and pleasant to work with. Highly recommend!"

---

Available immediately is this well proportioned and bright mews house is situated moments from Hyde Park and the amenities of Mayfair. The house itself comprises four bedrooms, 3 bathrooms, a large (first floor) reception room, separate kitchen, double garage and balcony. Woods Mews is set in a quiet residential side street located to the east of Hyde Park and to the north of Piccadilly. The property is within reach of the many amenities, restaurants and flagship designer stores offered by Mount Street (0.3 miles), South Molton Street (0.4 miles) and their surrounding areas. The closest underground stations are Marble Arch, located 0.2 miles from the property and Bond Street, located 0.3 miles from the property.

 House  
 Available  
to Let  
 x 4  
 x 1  
 x 3



Oliver Kent

 [oliver.kent@vitaproperties.uk](mailto:oliver.kent@vitaproperties.uk)  
 +4477 7274 0351



"I was very impressed with Vita and their network of buyers. When the sale of my flat fell through (twice) they worked extremely hard to find new buyers in a difficult market - thank you!"

---



"Working with Vita properties has been a smooth experience! No complaints at all. Our letting agent, Diana has been fantastic and very helpful throughout the whole process. I would highly recommend both Vita properties and Diana."

---





"I used Vita properties to find a flat recently and it was an overall professional, personalised and positive experience. Saira went the extra mile to accommodate to our needs and quick to help us whenever possible."

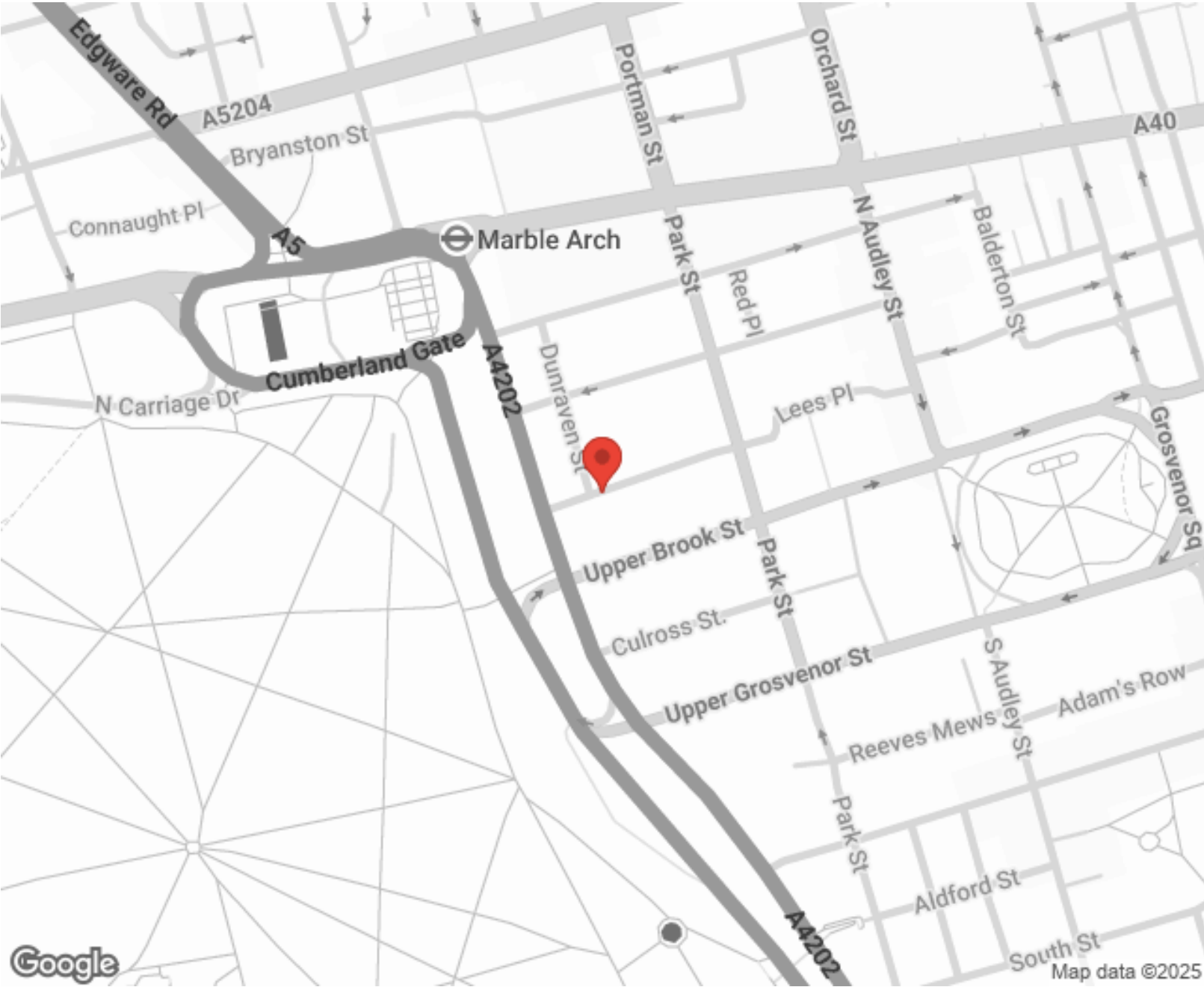
---



**MORE INFO, PICTURES,  
CONTACT ON  
OUR WEBSITE**



"Vita Properties is a very professional agency. My experience with them was incredible and the entire team was very helpful and kind throughout the renting process. I'd highly recommend!"



Energy Efficiency Rating			Environmental Impact (CO <sub>2</sub> ) Rating		
	Current	Potential		Current	Potential
Very energy efficient - lower running costs			Very environmentally friendly - lower CO <sub>2</sub> emissions		
(92-100) <b>A</b>			(92-100) <b>A</b>		
(81-91) <b>B</b>			(81-91) <b>B</b>		
(69-80) <b>C</b>			(69-80) <b>C</b>		
(55-68) <b>D</b>			(55-68) <b>D</b>		
(39-54) <b>E</b>			(39-54) <b>E</b>		
(21-38) <b>F</b>			(21-38) <b>F</b>		
(1-20) <b>G</b>			(1-20) <b>G</b>		
Not energy efficient - higher running costs			Not environmentally friendly - higher CO <sub>2</sub> emissions		
England, Scotland & Wales			England, Scotland & Wales		
EU Directive			EU Directive		

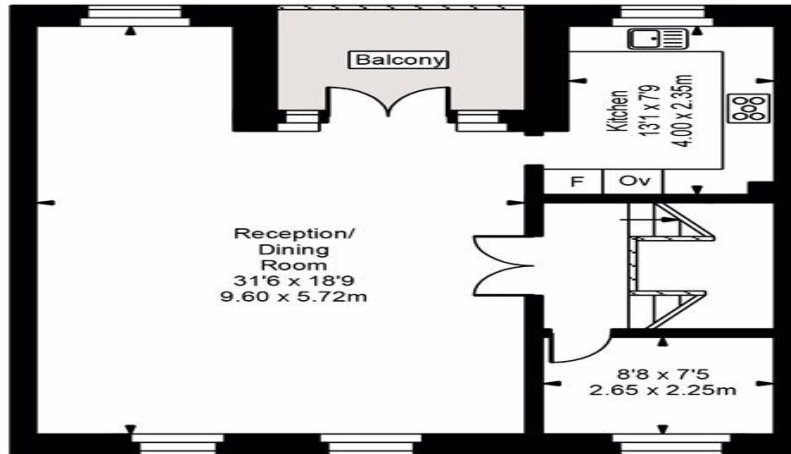
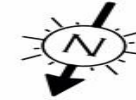
SCAN FOR MORE  
GOOGLE REVIEWS

Google  
★★★★★  
4.9 Stars | 132 Reviews

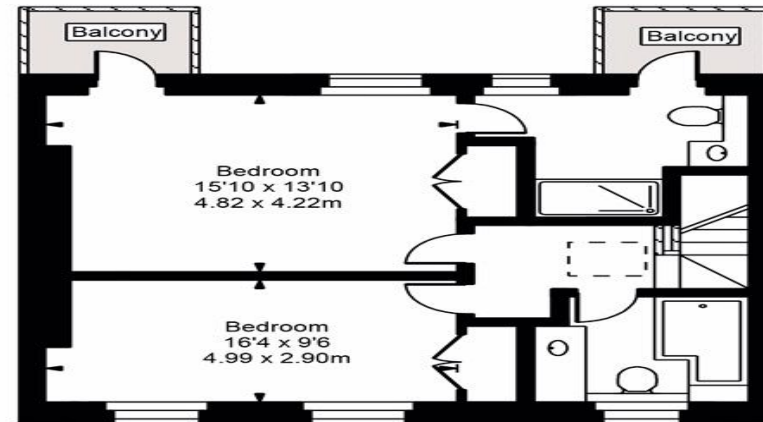
Find us on social media

vitaproperties  
 VitaProperties  
 VitaProperties

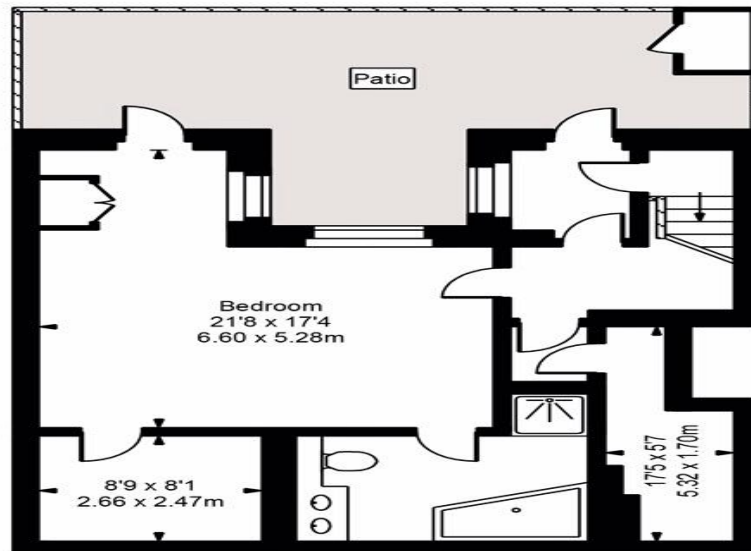
# Wood's Mews



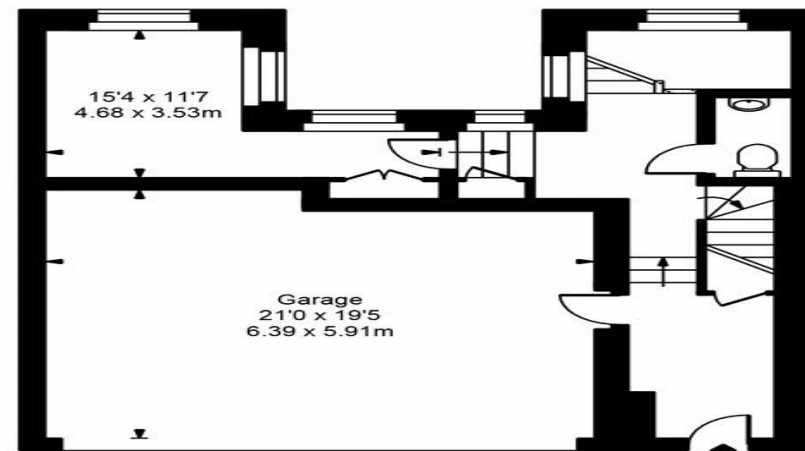
First Floor



Second Floor



Lower Ground Floor



Ground Floor



Approx Gross Internal Area **2947 Sq Ft - 273.78 Sq M**

FOR ILLUSTRATIVE PURPOSES ONLY. NOT TO SCALE.

Whilst every attempt has been made to ensure the accuracy of the floorplan shown, all measurements, positioning, fixtures, fittings and any other data shown are an approximate interpretation for illustrative purposes only and are not to scale. No responsibility is taken for any error, omission, mis-statement or use of data shown.  
Floor plan by [www.bestangle.co.uk](http://www.bestangle.co.uk)