



Westfield, Kidderpore Avenue, Hampstead, London, NW3 .| £3,100

- Balcony
- Modern
- Parking
- 24 hour Porter

- Gym & Swimming Pool
- Communal Gardens
- Heated terrace with lights and water feature and storage
- Sep washer dryer

"Vita Properties have been tremendously helpful throughout the process of securing/renting my flat. Informative about the property, prompt communication, easy to use dashboard for sharing of information, and pleasant to work with. Highly recommend!"

Available from 24 August 2024. Discover a stunning apartment situated on the ground floor of the highly sought-after Westfield block. This well-presented residence boasts an impressive 21 ft reception room, a separate fitted kitchen, a spacious 18 ft principal bedroom suite, a second double bedroom, and a second family bathroom.

Step onto the terrace and enjoy the picturesque views of the tranquil communal gardens, complete with convenient storage, lighting, and heating facilities. Residents of Westfield can benefit from 24-hour care provided by a friendly and efficient team of porters, manicured communal gardens, access to a pool and gym, as well as underground parking.

Located on Kidderpore Avenue, a charming tree-lined street connecting Platt's Lane to Heath Drive in north-west Hampstead, this apartment offers excellent proximity to public transport and the national road network. You'll have easy access to Brent Cross Shopping Centre, the A406 North Circular Road, the A41/A1 arterial route, and junction 1 of the M1 Motorway.

Additionally, you'll find an array of cafes, restaurants, and boutiques in the vibrant areas of Hampstead Village, Finchley Road, and West Hampstead. Experience the perfect blend of luxury, convenience, and tranquility in this exceptional apartment at Westfield. Contact us now to arrange a viewing and make it your dream home.



Zoe Browne

✉ zoe.browne@vitaproperties.uk  
☎ +44 7908 713629



- 🏠 Flat
- 🔑 Available to Let
- 🛏 x 2
- 🛋 x 1
- 🚿 x 2





"I was very impressed with Vita and their network of buyers. When the sale of my flat fell through (twice) they worked extremely hard to find new buyers in a difficult market - thank you!"

---





"Working with Vita properties has been a smooth experience! No complaints at all. Our letting agent, Diana has been fantastic and very helpful throughout the whole process. I would highly recommend both Vita properties and Diana."

---





"I used Vita properties to find a flat recently and it was an overall professional, personalised and positive experience. Saira went the extra mile to accommodate to our needs and quick to help us whenever possible."

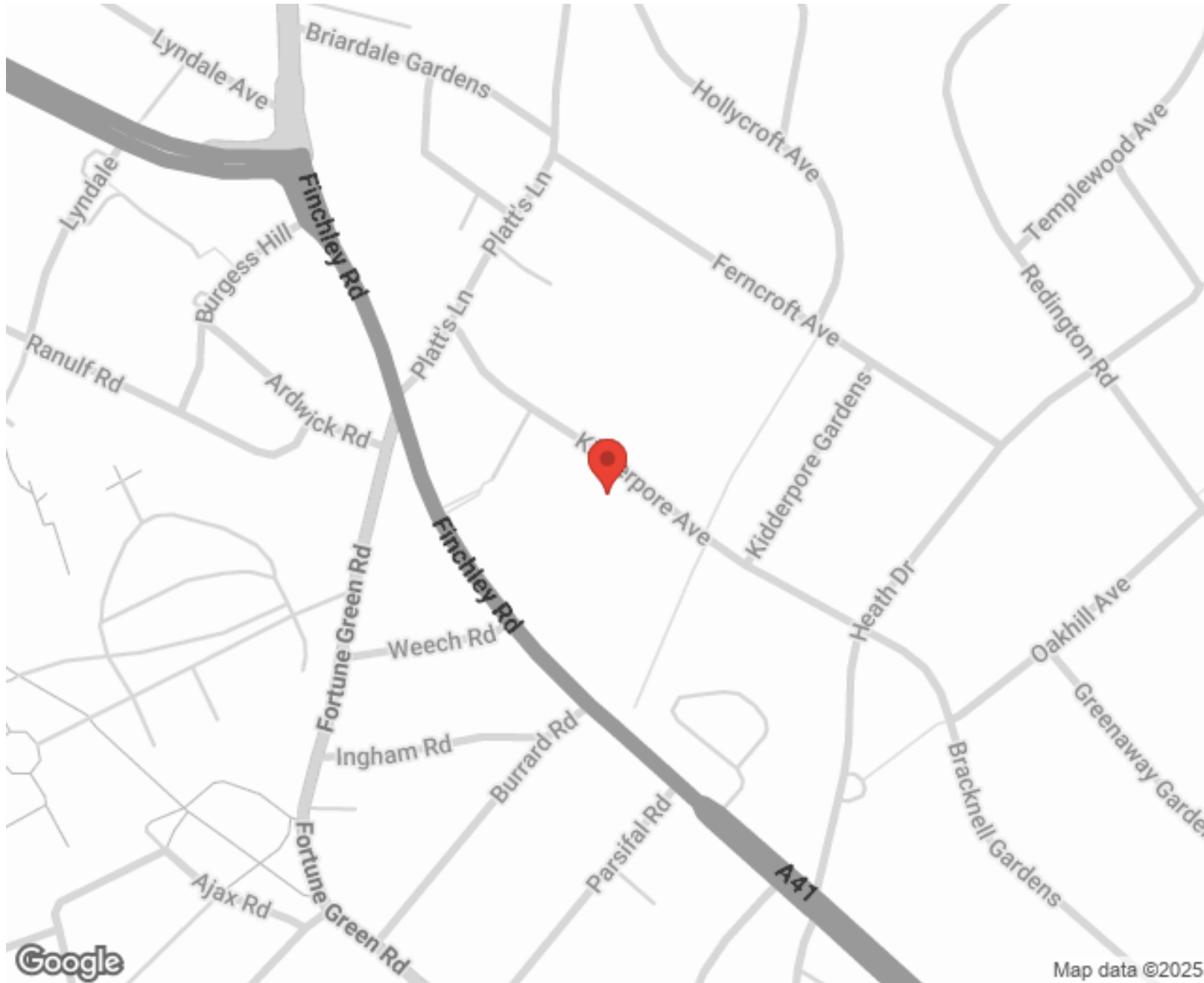
---



MORE INFO, PICTURES,  
CONTACT ON  
OUR WEBSITE



"Vita Properties is a very professional agency. My experience with them was incredible and the entire team was very helpful and kind throughout the renting process. I'd highly recommend!"



**Energy Efficiency Rating**

Very energy efficient - lower running costs

Current: 78, Potential: 81

Very energy efficient - lower running costs

Not energy efficient - higher running costs

**Environmental Impact (CO<sub>2</sub>) Rating**

Very environmentally friendly - lower CO<sub>2</sub> emissions

Current: 80, Potential: 83

Very environmentally friendly - lower CO<sub>2</sub> emissions

Not environmentally friendly - higher CO<sub>2</sub> emissions

England, Scotland & Wales

EU Directive 2002/91/EC

SCAN FOR MORE  
GOOGLE REVIEWS



Google



4.9 Stars | 132 Reviews

Find us on social media



vitaproperties



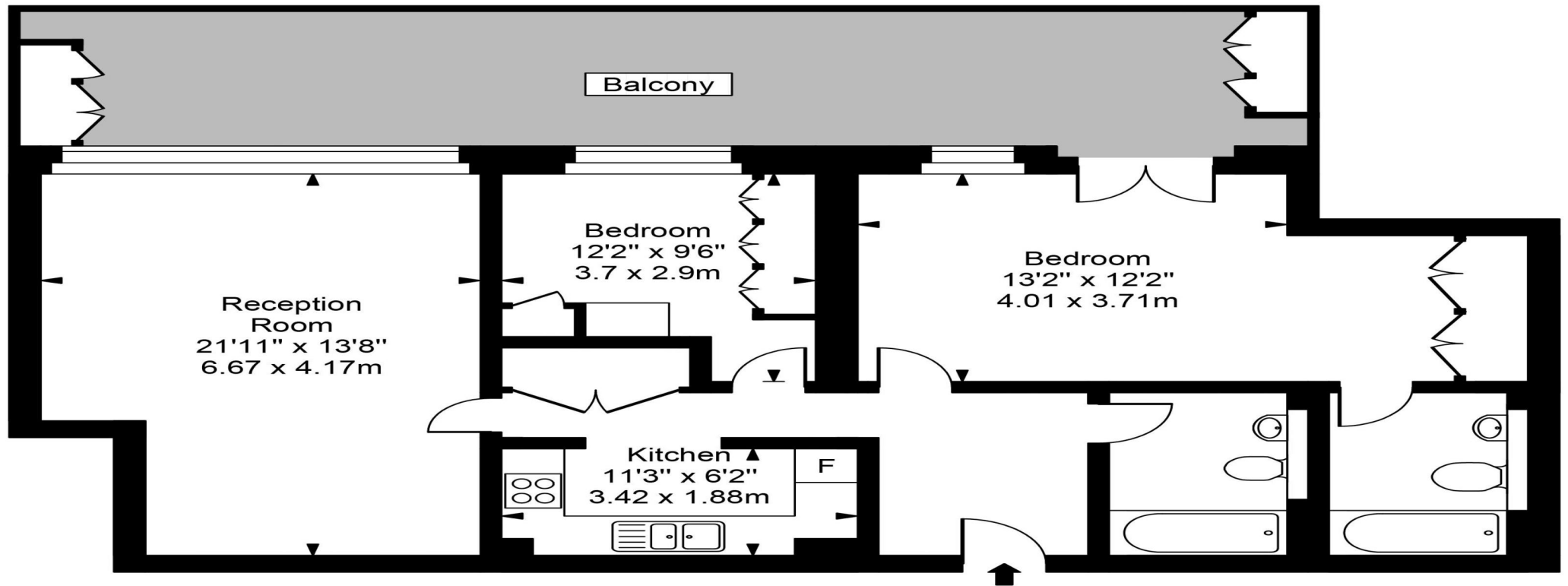
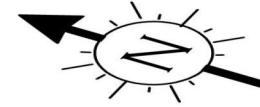
## VitaProperties



### VitaProperties



# Westfield



Lower Ground Floor



Approx Gross Internal Area

**972 Sq Ft - 90.32 Sq M**

For Illustration Purposes Only - Not To Scale  
Floor plan by [www.creativeplanetlk.com](http://www.creativeplanetlk.com)