



Queens Grove, St Johns Wood, London, NW8 .| £925

- 1250 sq ft
- Parking and a garden
- Moments to St Johns Wood and Swiss Cottage
- Modern finishes

- Spacious living space
- Available immediately

"Vita Properties have been tremendously helpful throughout the process of securing/renting my flat. Informative about the property, prompt communication, easy to use dashboard for sharing of information, and pleasant to work with. Highly recommend!"

Available immediately is this state-of-the-art three bedroom house with a patio garden and gated off-street parking, offering exceptional living and entertaining space in a superb location in St John's Wood. With exquisite interior design combining a truly modern, sophisticated and luxurious living space, the house is rich with natural light and the interiors are an exact reflection of this.

The house comprises a large and bright reception and dining room, custom made Italian designed kitchen with high quality integrated appliances, conservatory leading onto a private patio garden, generous master bedroom, two further double bedrooms, two bathrooms (one en-suite) and further guest WC - Offered unfurnished.

🏠 House
🔑 Available
to Let
🛏 x 3
🛎 x 2
🚿 x 2



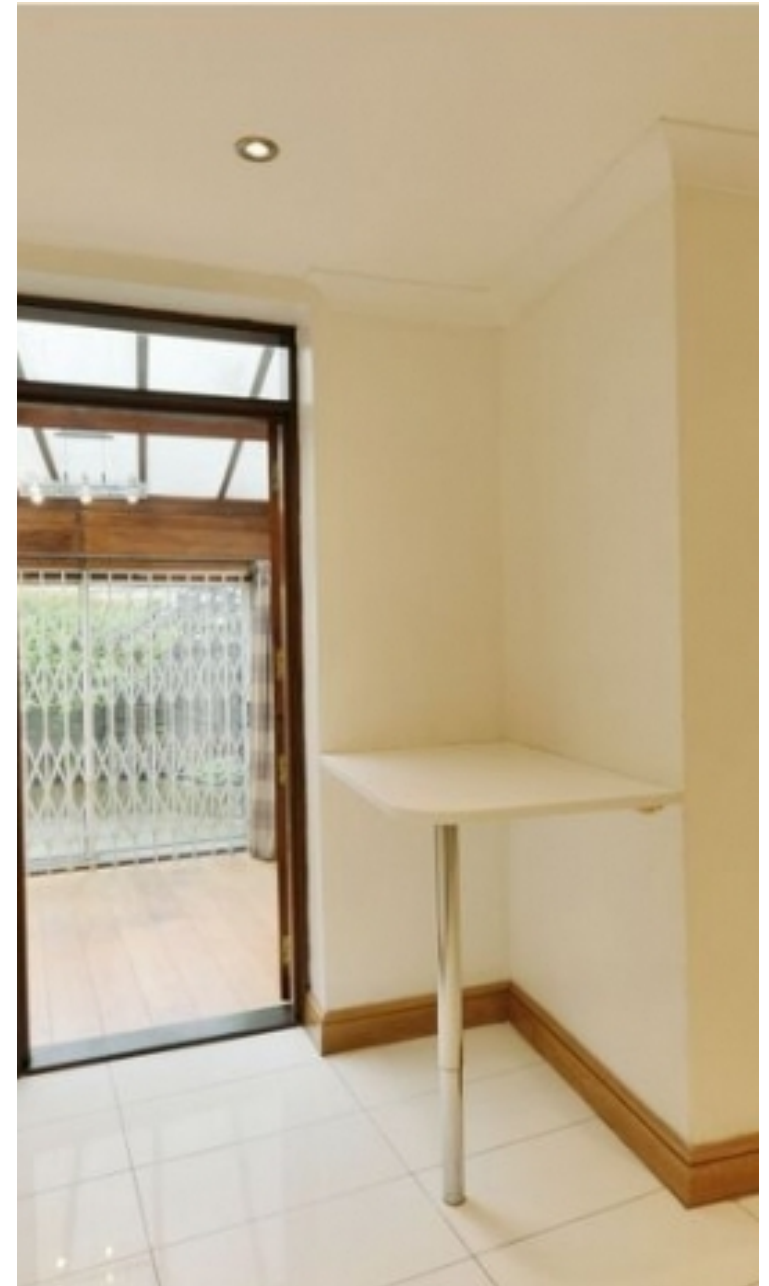
Oliver Kent

✉ oliver.kent@vitaproperties.uk

☎ +4477 7274 0351



"I was very impressed with Vita and their network of buyers. When the sale of my flat fell through (twice) they worked extremely hard to find new buyers in a difficult market - thank you!"



"Working with Vita properties has been a smooth experience! No complaints at all. Our letting agent, Diana has been fantastic and very helpful throughout the whole process. I would highly recommend both Vita properties and Diana."



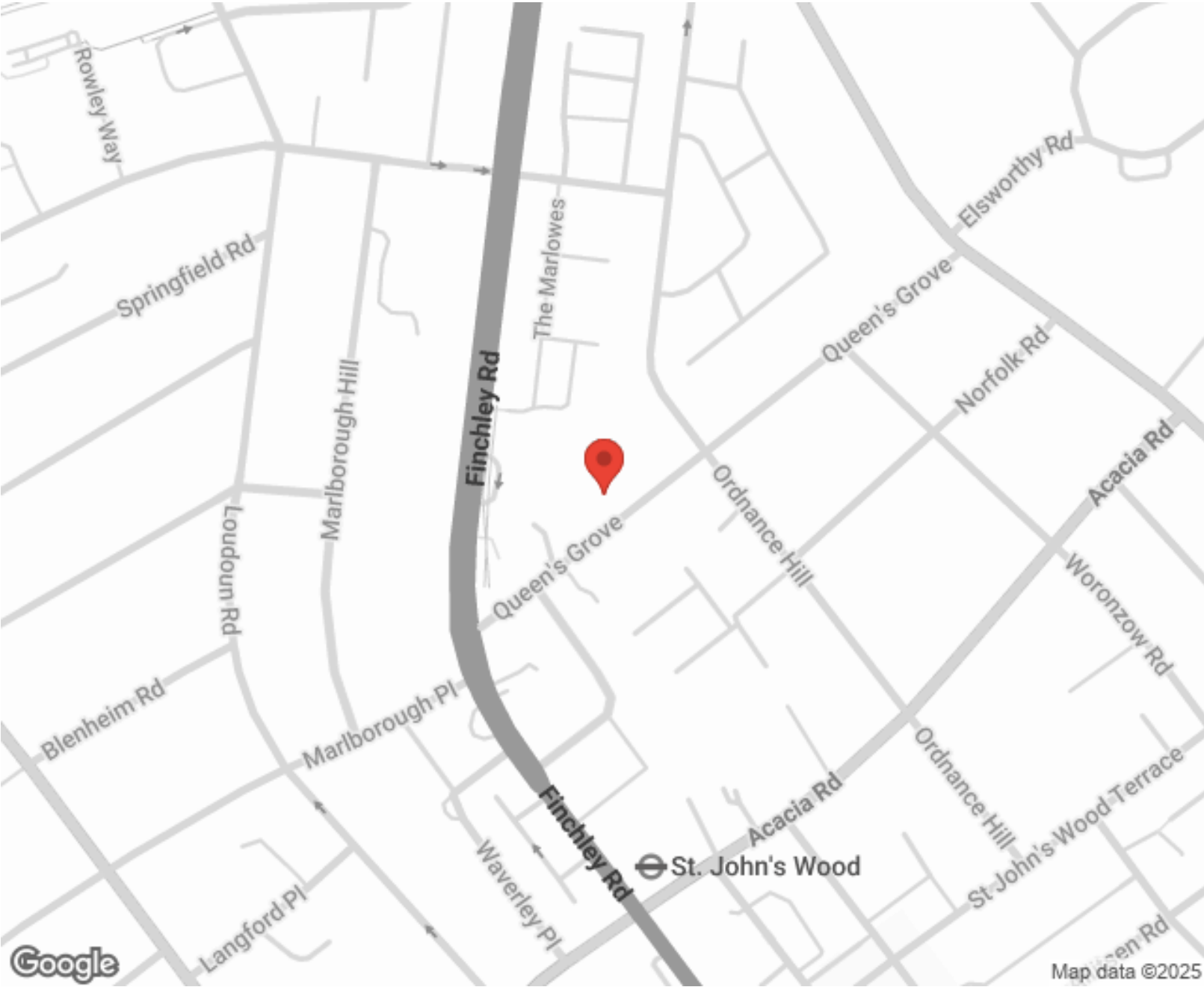
"I used Vita properties to find a flat recently and it was an overall professional, personalised and positive experience. Saira went the extra mile to accommodate to our needs and quick to help us whenever possible."



MORE INFO, PICTURES,
CONTACT ON
OUR WEBSITE



"Vita Properties is a very professional agency. My experience with them was incredible and the entire team was very helpful and kind throughout the renting process. I'd highly recommend!"



Energy Efficiency Rating		Environmental Impact (CO ₂) Rating	
	Potential		Potential
Very energy efficient - lower running costs		Very environmentally friendly - lower CO ₂ emissions	
(92-100) A		(92-100) A	
(81-91) B		(81-91) B	
(69-80) C		(69-80) C	
(55-68) D	68	(55-68) D	67
(39-54) E	70	(39-54) E	68
(21-38) F		(21-38) F	
(1-20) G		(1-20) G	
Not energy efficient - higher running costs		Not environmentally friendly - higher CO ₂ emissions	
England, Scotland & Wales		England, Scotland & Wales	

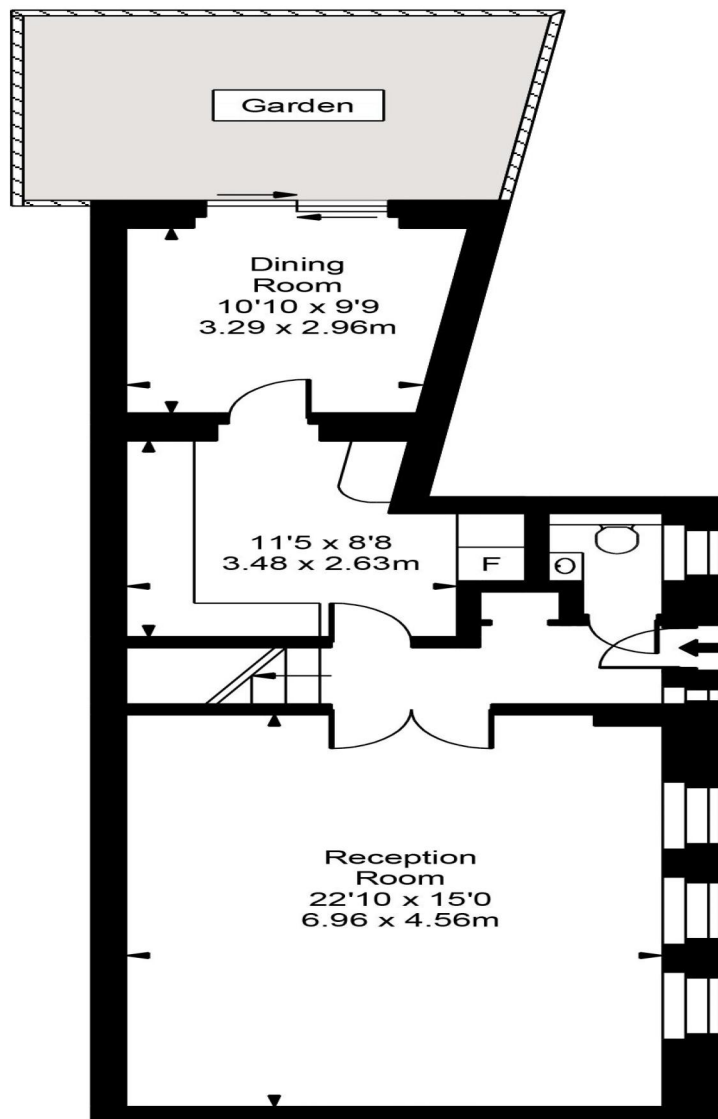
SCAN FOR MORE
GOOGLE REVIEWS

Google
★★★★★
4.9 Stars | 132 Reviews

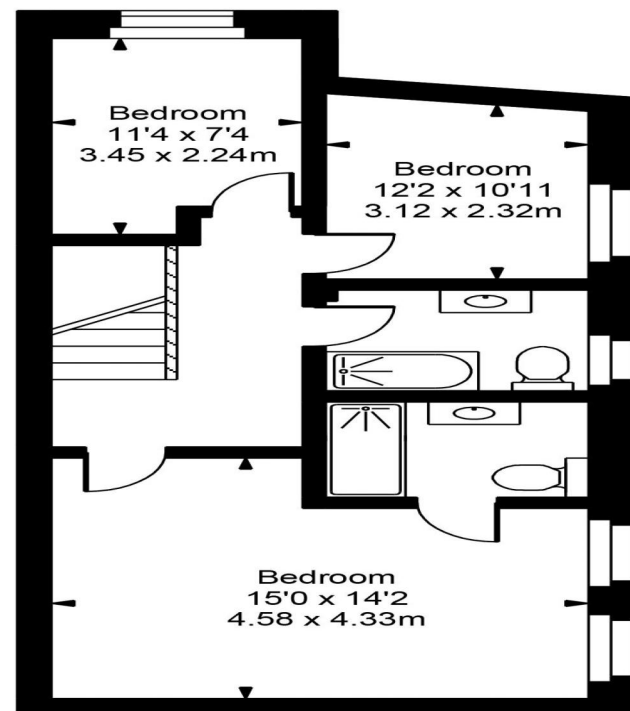
Find us on social media

vitaproperties
 VitaProperties
 VitaProperties

Queens Grove



Ground Floor



First Floor

Approx Gross Internal Area 1248 Sq Ft - 115.93 Sq M



FOR ILLUSTRATIVE PURPOSES ONLY. NOT TO SCALE.

Whilst every attempt has been made to ensure the accuracy of the floorplan shown, all measurements, positioning, fixtures, fittings and any other data shown are an approximate interpretation for illustrative purposes only and are not to scale. No responsibility is taken for any error, omission, miss-statement or use of data shown.

Floor plan by www.bestangle.co.uk