



**VITA**  
*Properties*






Chatsworth Road, Mapesbury Conservation, London, NW2 | £725,000

- A large private roof terrace perfect for entertaining
- Spacious and bright living room
- A fully fitted eat in kitchen
- Off street parking
- Moments to transport and shops
- Long lease

"Vita Properties have been tremendously helpful throughout the process of securing/renting my flat. Informative about the property, prompt communication, easy to use dashboard for sharing of information, and pleasant to work with. Highly recommend!"

---

We are delighted to offer as sole agents this large two double bedroom apartment (842 Sq Ft) situated on the first floor in this property, which benefits from a spacious lounge/dining room, large modern kitchen with direct access to a private terrace and access to communal garden as well as off street parking. This property has been maintained and decorated to a high standard. This apartment is conveniently situated for shops, restaurants and transport facilities. Kilburn (jubilee line) is a 3 minute walk and Brondesbury (overground) is a 5 minute walk. This tastefully decorated home benefits from a lot of natural light is offered with a long lease

-  Flat
- 
-  x 2
-  x 1
-  x 1



Oliver Kent

 [oliver.kent@vitaproperties.uk](mailto:oliver.kent@vitaproperties.uk)

 +4477 7274 0351



"I was very impressed with Vita and their network of buyers. When the sale of my flat fell through (twice) they worked extremely hard to find new buyers in a difficult market - thank you!"

---



"Working with Vita properties has been a smooth experience! No complaints at all. Our letting agent, Diana has been fantastic and very helpful throughout the whole process. I would highly recommend both Vita properties and Diana."

---





"I used Vita properties to find a flat recently and it was an overall professional, personalised and positive experience. Saira went the extra mile to accommodate to our needs and quick to help us whenever possible."

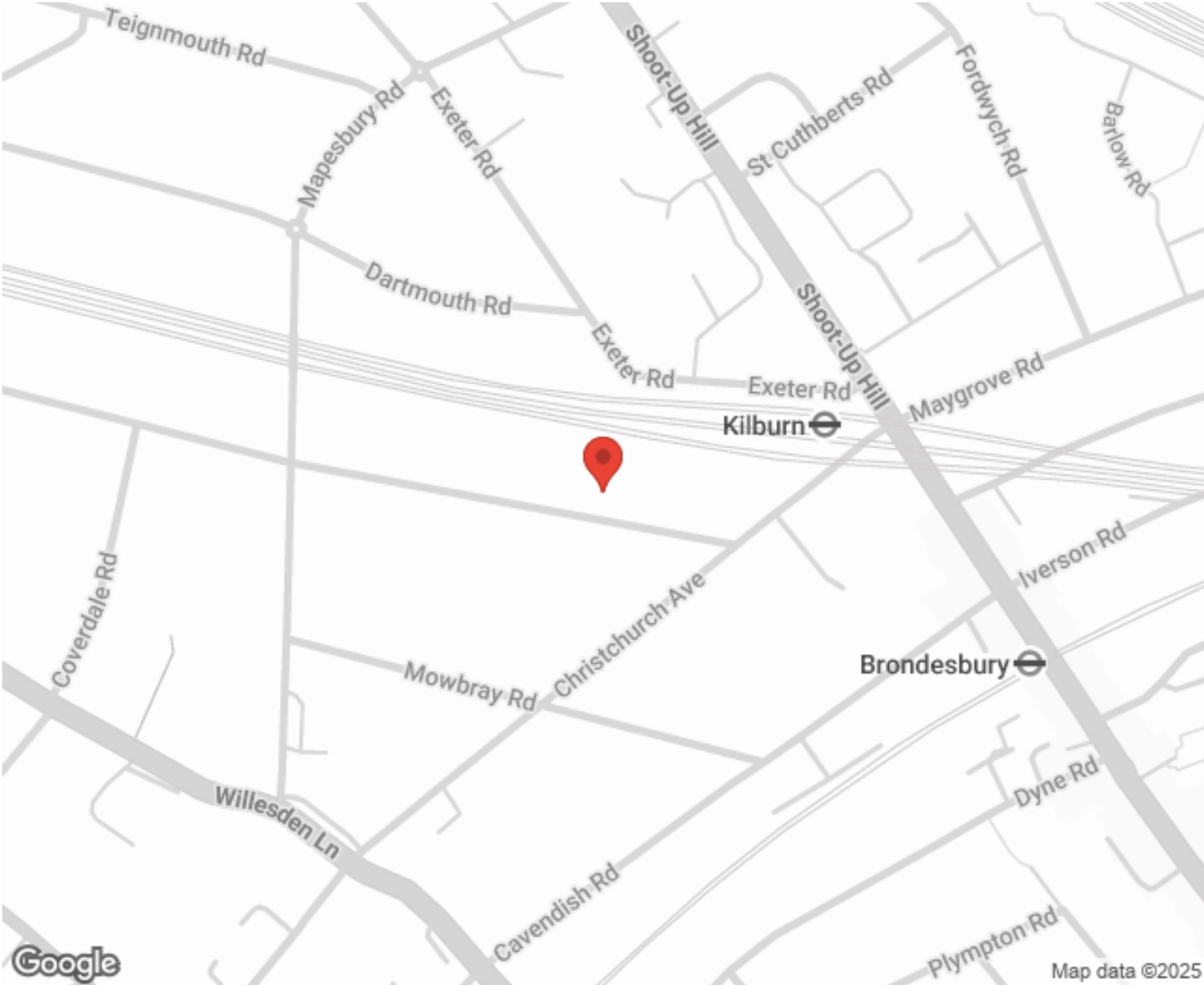
---



MORE INFO, PICTURES,  
CONTACT ON  
OUR WEBSITE



"Vita Properties is a very professional agency. My experience with them was incredible and the entire team was very helpful and kind throughout the renting process. I'd highly recommend!"



Energy Efficiency Rating		Environmental Impact (CO <sub>2</sub> ) Rating	
	Current	Potential	
Very energy efficient - lower running costs			
(92-100) A			
(81-91) B			
(69-80) C			
(55-68) D			
(39-54) E			
(21-38) F			
(1-20) G			
Not energy efficient - higher running costs			
England, Scotland & Wales		EU Directive	

	81		
	70		
Very environmentally friendly - lower CO <sub>2</sub> emissions			
(92-100) A			
(81-91) B			83
(69-80) C			
(55-68) D			
(39-54) E			
(21-38) F			
(1-20) G			
Not environmentally friendly - higher CO <sub>2</sub> emissions			
England, Scotland & Wales		EU Directive	

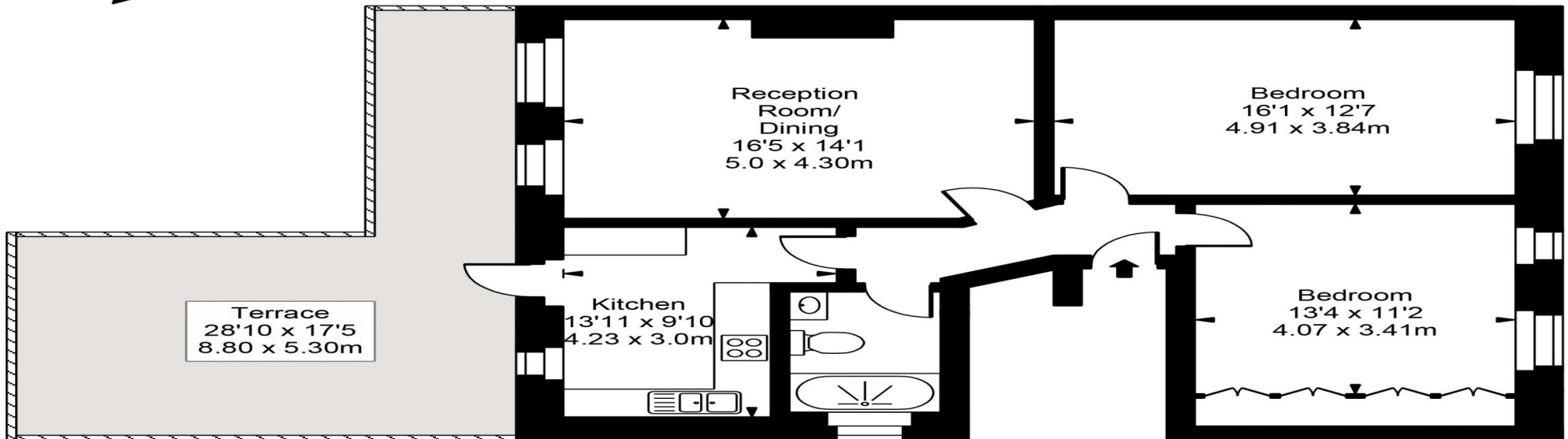
SCAN FOR MORE  
GOOGLE REVIEWS

Google  
★★★★★  
4.9 Stars | 132 Reviews

Find us on social media

vitaproperties  
 VitaProperties  
 VitaProperties

Chatsworth Road



First Floor

Approx Gross Internal Area    **842 Sq Ft - 78.21 Sq M**

For Illustration Purposes Only - Not To Scale  
Floor plan by [www.bestangle.co.uk](http://www.bestangle.co.uk)