



Princess Mews, Belsize Park, London, NW3 .| £750

- Available 15 June 2017
- Parking
- Balcony
- Two bedrooms - Two bathrooms

- Moments to Belsize Village and transport
- Located on a cobbled mews in Belsize Village

"Vita Properties have been tremendously helpful throughout the process of securing/renting my flat. Informative about the property, prompt communication, easy to use dashboard for sharing of information, and pleasant to work with. Highly recommend!"

---

Available 15 June 2017 - A recently refurbished two bedroom mews house arranged over three floors and set within this attractive cobbled mews in Belsize Village. The property boasts a bright and airy reception room with a stunning Juliette balcony and a modern fully fitted kitchen, principal bedroom with built-in storage and en-suite shower room, further second double bedroom, family bathroom and ample storage throughout.

Ideally located for the popular restaurants and cafes of Belsize Village, as well as the transport links of Swiss Cottage



Oliver Kent

✉ [oliver.kent@vitaproperties.uk](mailto:oliver.kent@vitaproperties.uk)  
☎ +4477 7274 0351

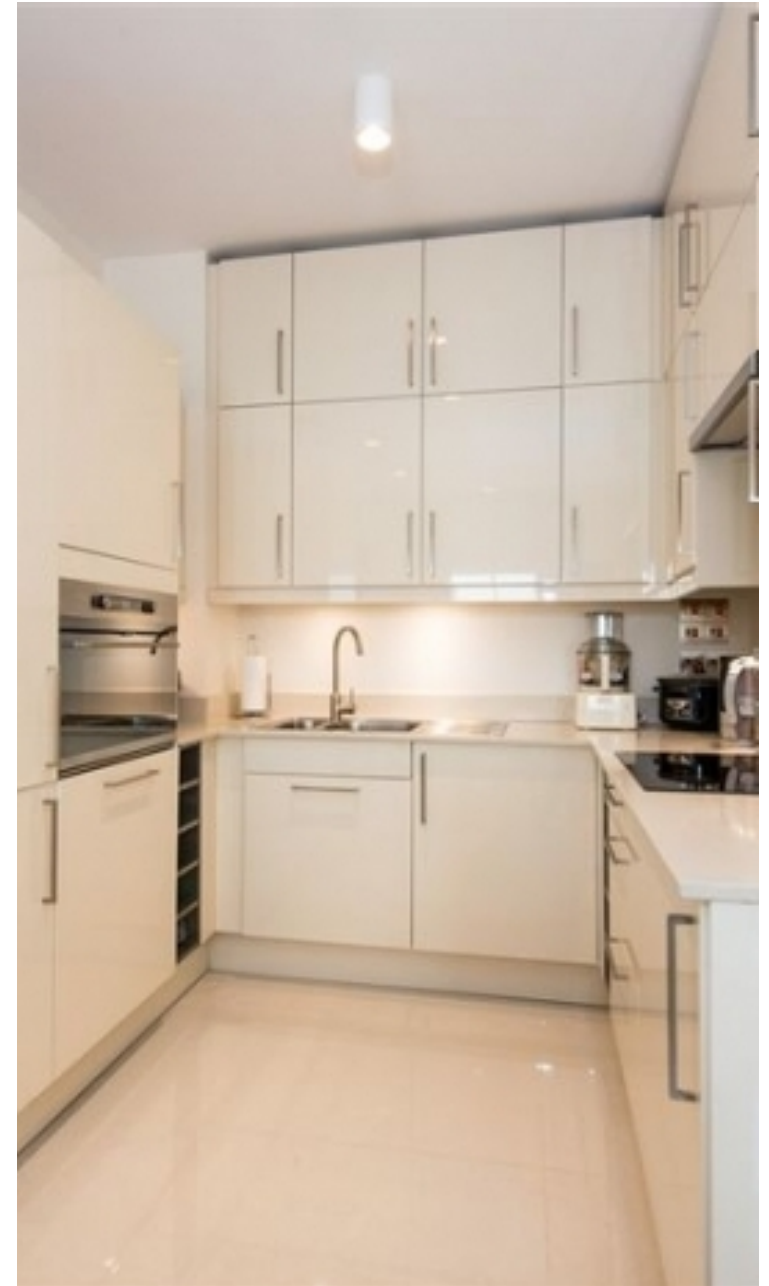


🏠 House  
🔑 Available  
to Let  
🛏 x 2  
🛋 x 1  
🚗 x 2



"I was very impressed with Vita and their network of buyers. When the sale of my flat fell through (twice) they worked extremely hard to find new buyers in a difficult market - thank you!"

---



"Working with Vita properties has been a smooth experience! No complaints at all. Our letting agent, Diana has been fantastic and very helpful throughout the whole process. I would highly recommend both Vita properties and Diana."

---





"I used Vita properties to find a flat recently and it was an overall professional, personalised and positive experience. Saira went the extra mile to accommodate to our needs and quick to help us whenever possible."

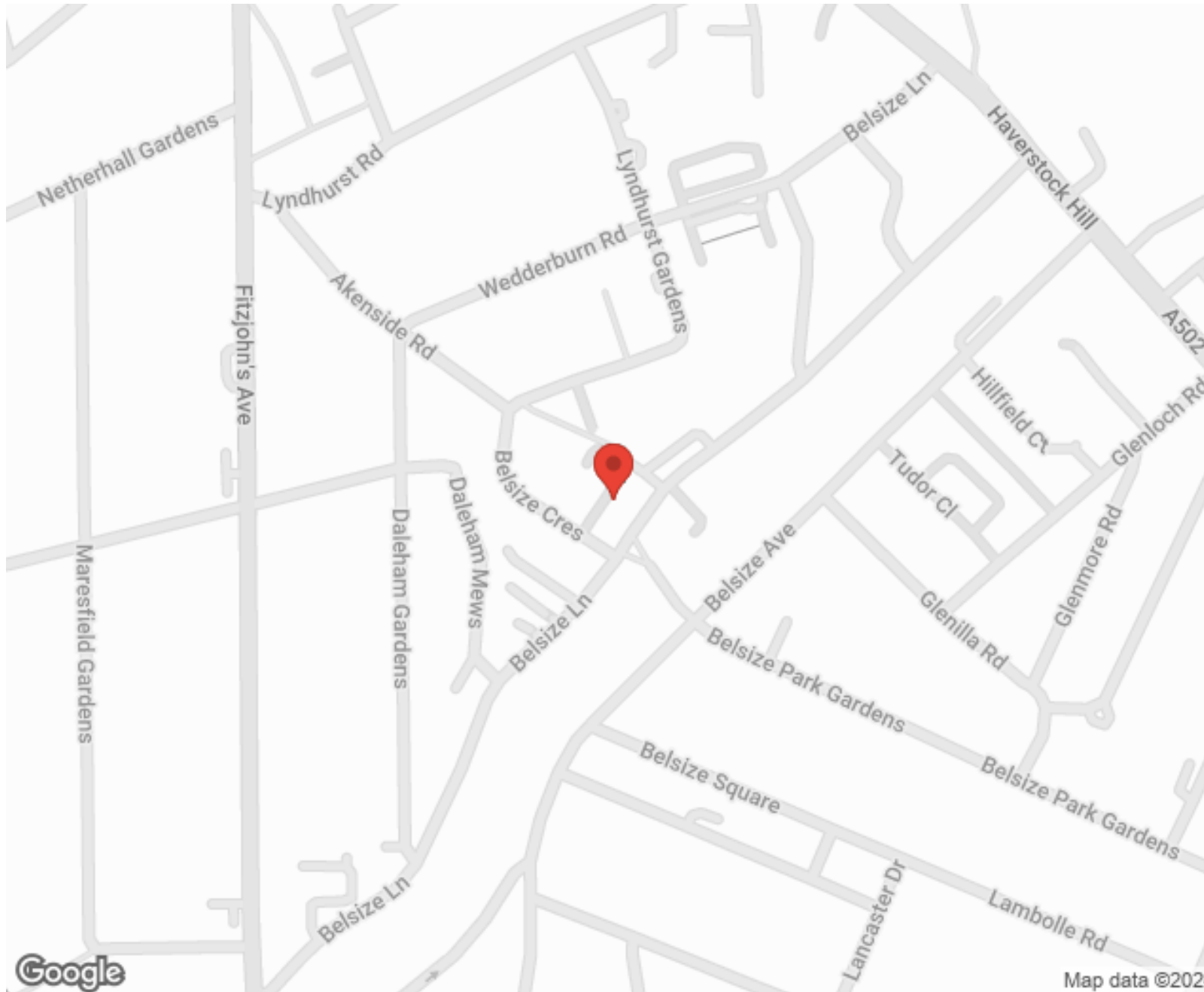
---



**MORE INFO, PICTURES,  
CONTACT ON  
OUR WEBSITE**



"Vita Properties is a very professional agency. My experience with them was incredible and the entire team was very helpful and kind throughout the renting process. I'd highly recommend!"



**Energy Efficiency Rating**

Rating	Score Range	Current	Potential
A	92-100		
B	81-91		
C	69-80		
D	55-68		
E	39-54	48	50
F	21-38		
G	1-20		

Very energy efficient - lower running costs

Not energy efficient - higher running costs

England, Scotland & Wales

EU Directive 2002/91/EC

**Environmental Impact (CO<sub>2</sub>) Rating**

Rating	Score Range	Current	Potential
A	92-100		
B	81-91		
C	69-80		
D	55-68		
E	39-54	42	43
F	21-38		
G	1-20		

Very environmentally friendly - lower CO<sub>2</sub> emissions

Not environmentally friendly - higher CO<sub>2</sub> emissions

England, Scotland & Wales

EU Directive 2006/40/EC

SCAN FOR MORE  
GOOGLE REVIEWS



Google



4.9 Stars | 132 Reviews

Find us on social media



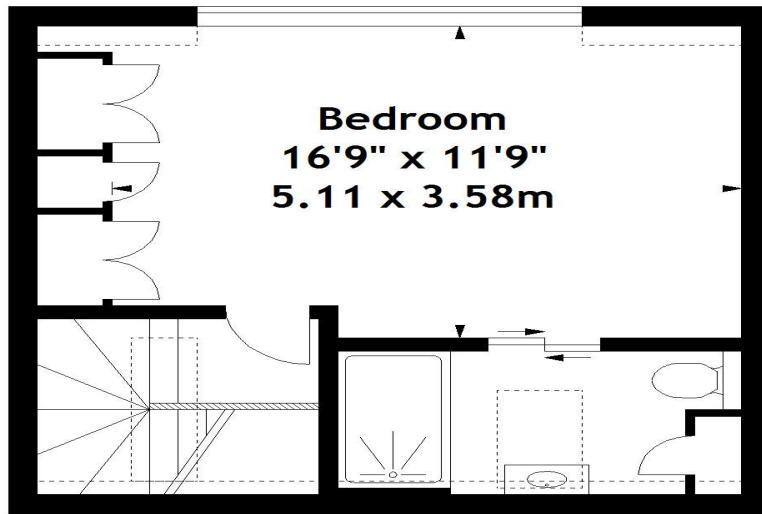
vitaproperties



## VitaProperties



## VitaProperties

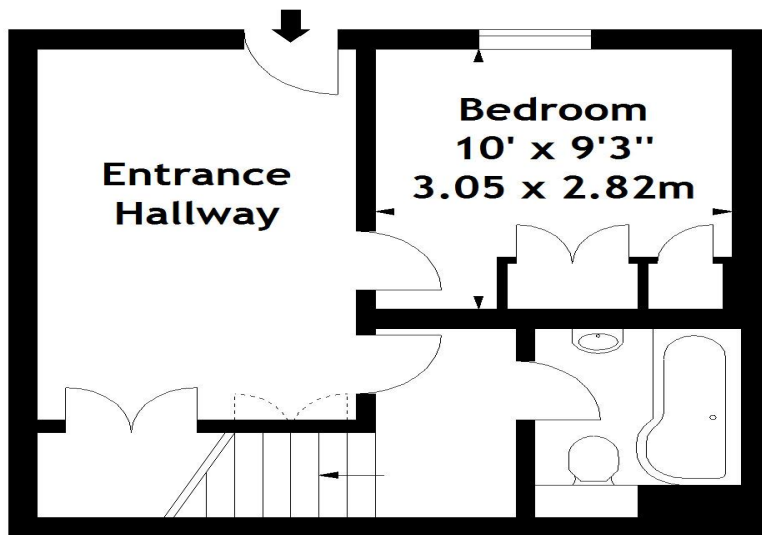


## Princess Mews, NW3

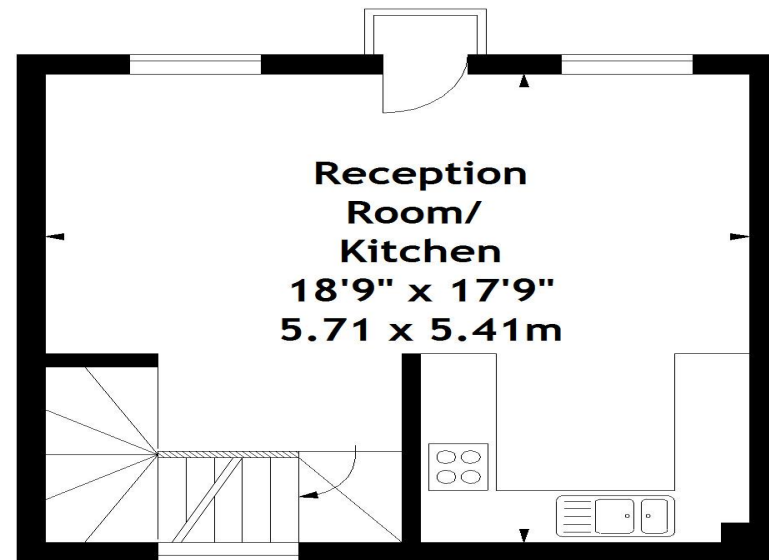
Approx. Gross Internal Area  
1011 Sq Ft - 93.92 Sq M



**Second Floor**



**Ground Floor**



**First Floor**

Measured in accordance with RICS guidelines. Every attempt is made to ensure accuracy, however all measurements are approximate. This floor plan is for illustrative purposes only and is not to scale.  
© Datography Ltd 2016  
Photographs \* Floorplans \* Virtual Tours  
Tel: 0845 643 4401 [www.datographv.com](http://www.datographv.com)