



Chichele Road, Willesden Green, London, NW2 .| £450

- Gated off street parking
- Storage throughout
- High ceilings
- Full fitted eat in kitchen inc dishwasher
- Second floor with a lift - Situated at the quiet rear of this mansion block with rooftop views
- Available 09 December 2022

"Vita Properties have been tremendously helpful throughout the process of securing/renting my flat. Informative about the property, prompt communication, easy to use dashboard for sharing of information, and pleasant to work with. Highly recommend!"

Available 09 December 2022 and located within 7 mins walk to Willesden Green tube and high street is this spacious two double second floor apartment (with lift) situated at the quiet rear of this mansion block with rooftop views. Offering gated off street parking this newly decorated apartment further benefits, a fully fitted eat in kitchen. fitted storage throughout, a fully tiled shower room and a comfortable reception room.

Willesden Green is zone 2 on the jubilee line giving access to the West End and City within 25 minutes, The flat is being offered furnished or unfurnished



Oliver Kent

✉ oliver.kent@vitaproperties.uk
☎ +4477 7274 0351



🏠 Flat
🔑 Under
Negotiation
🛋 x 2
🛏 x 1
🚿 x 1



"I was very impressed with Vita and their network of buyers. When the sale of my flat fell through (twice) they worked extremely hard to find new buyers in a difficult market - thank you!"



"Working with Vita properties has been a smooth experience! No complaints at all. Our letting agent, Diana has been fantastic and very helpful throughout the whole process. I would highly recommend both Vita properties and Diana."



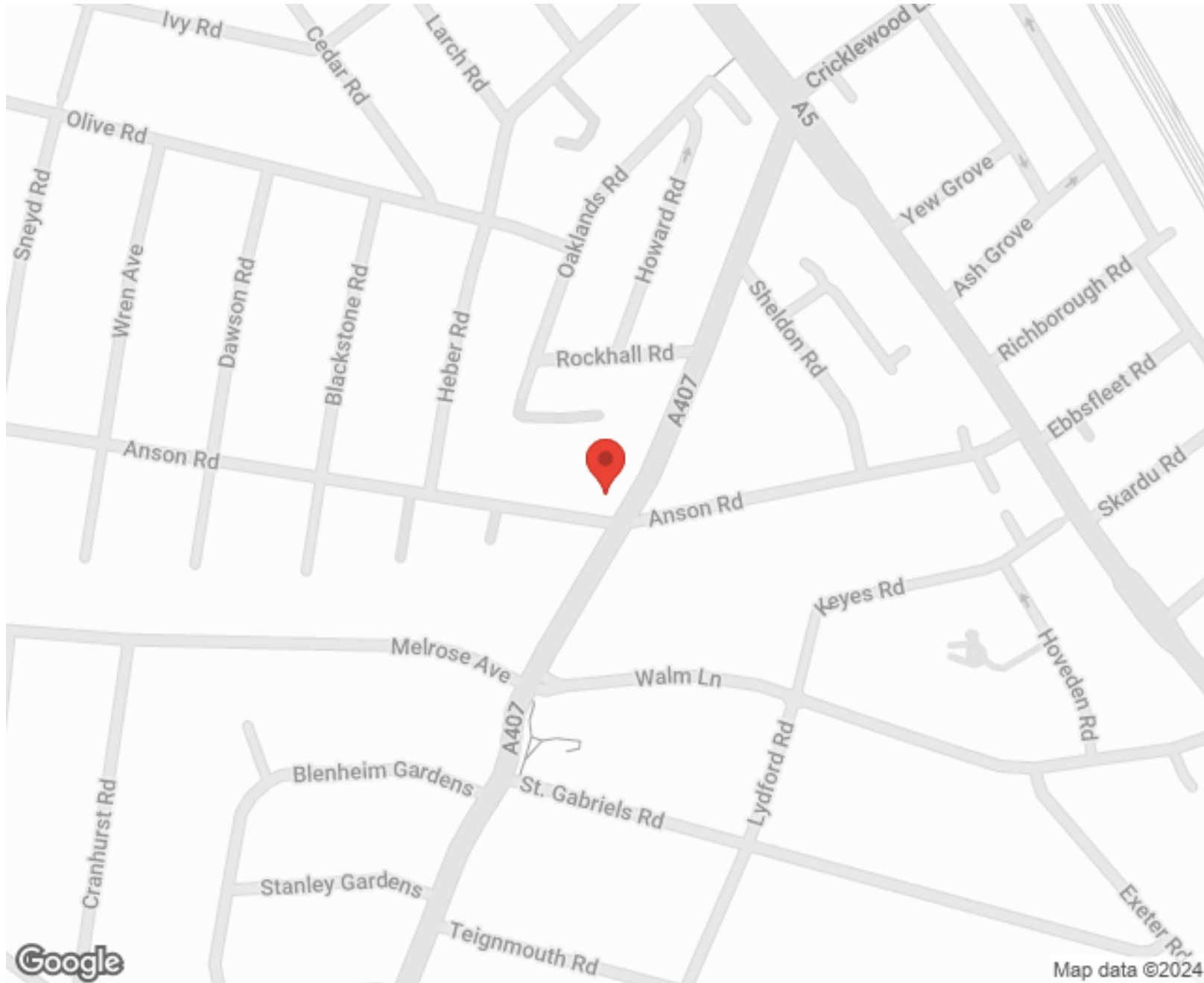
"I used Vita properties to find a flat recently and it was an overall professional, personalised and positive experience. Saira went the extra mile to accommodate to our needs and quick to help us whenever possible."



**MORE INFO, PICTURES,
CONTACT ON
OUR WEBSITE**



"Vita Properties is a very professional agency. My experience with them was incredible and the entire team was very helpful and kind throughout the renting process. I'd highly recommend!"



SCAN FOR MORE
GOOGLE REVIEWS



Google



4.9 Stars | 132 Reviews

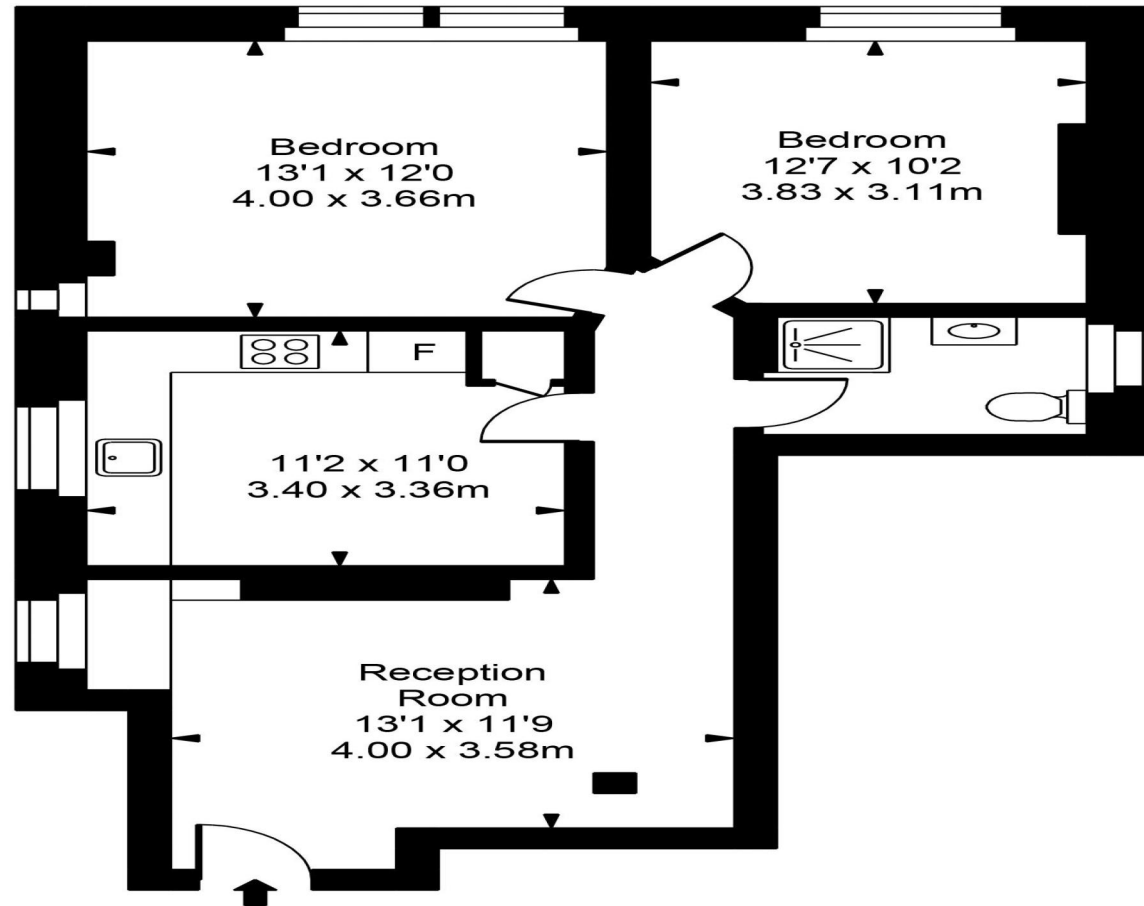
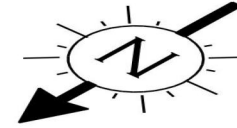
Find us on social media

 vitaproperties

 VitaProperties

 VitaProperties

Chichele Mansions



Second Floor



Approx Gross Internal Area **715 Sq Ft - 66.42 Sq M**

For Illustration Purposes Only - Not To Scale
Floor plan by www.bestangle.co.uk