



Fitzjohns Avenue, Hampstead, London, NW3 .| £1,950,000

- Approx 1,599 sq.ft. / 148 sq.m.)
- Sole use of a substantial (127ft) garden.
- Moments from of Hampstead Village (Northern Line), Swiss Cottage (Jubilee Line) and Finchley Road (Jubilee, Metropolitan and Overground Lines).
- A raised ground and lower ground floor garden apartment
- East facing terrace overlooking the garden
- No upper chain

"Vita Properties have been tremendously helpful throughout the process of securing/renting my flat. Informative about the property, prompt communication, easy to use dashboard for sharing of information, and pleasant to work with. Highly recommend!"

A stunning & well proportioned 3 bedrooomed apartment (approx. 1,599 sq.ft. / 148 sq.m.) on the raised ground floor situated in a newly renovated conversion conveniently located for amenities of Swiss Cottage (Jubilee line). The 'O2' Shopping & Leisure Centre and the Finchley Road Underground Station (Jubilee & Metropolitan lines) are also within close proximity. The property is also close by the American School in London. The property comprises a spacious reception/dining room overlooking gardens, modern & brand new luxury kitchen (dishwasher, washer/dryer, 4-ring gas hob, oven & tall fridge/freezer), 3 double bedrooms (master with walk-in cupboard & office area), 2 bathrooms (1 en suite shower room) and guest wc.


Further benefits include large private garden, wood floors throughout & double glazed windows





Oliver Kent


✉ oliver.kent@vitaproperties.uk
☎ +4477 7274 0351




 Flat



 x 3

 x 1

 x 2



"I was very impressed with Vita and their network of buyers. When the sale of my flat fell through (twice) they worked extremely hard to find new buyers in a difficult market - thank you!"



"Working with Vita properties has been a smooth experience! No complaints at all. Our letting agent, Diana has been fantastic and very helpful throughout the whole process. I would highly recommend both Vita properties and Diana."



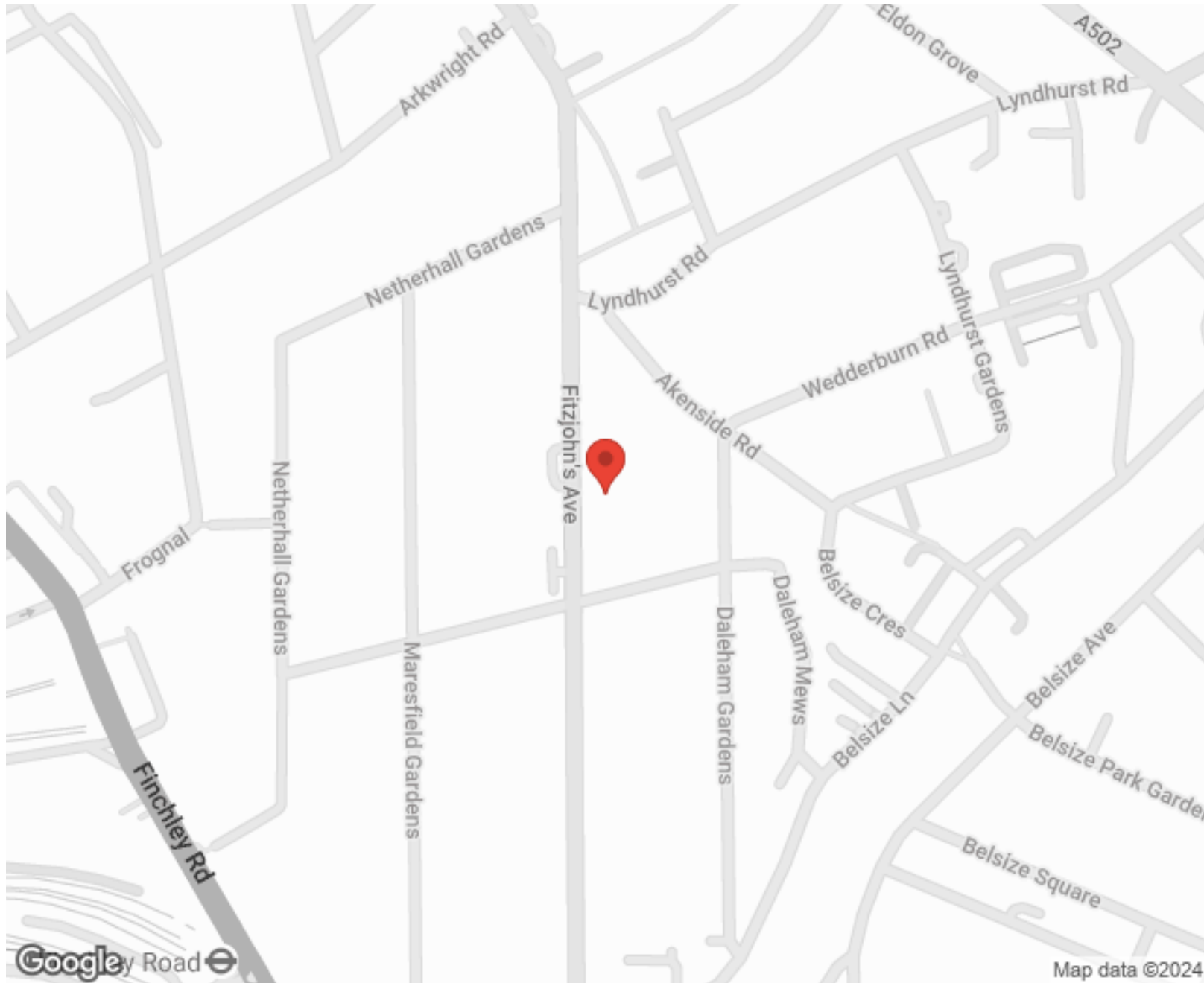
"I used Vita properties to find a flat recently and it was an overall professional, personalised and positive experience. Saira went the extra mile to accommodate to our needs and quick to help us whenever possible."



MORE INFO, PICTURES,
CONTACT ON
OUR WEBSITE



"Vita Properties is a very professional agency. My experience with them was incredible and the entire team was very helpful and kind throughout the renting process. I'd highly recommend!"



SCAN FOR MORE
GOOGLE REVIEWS



Google




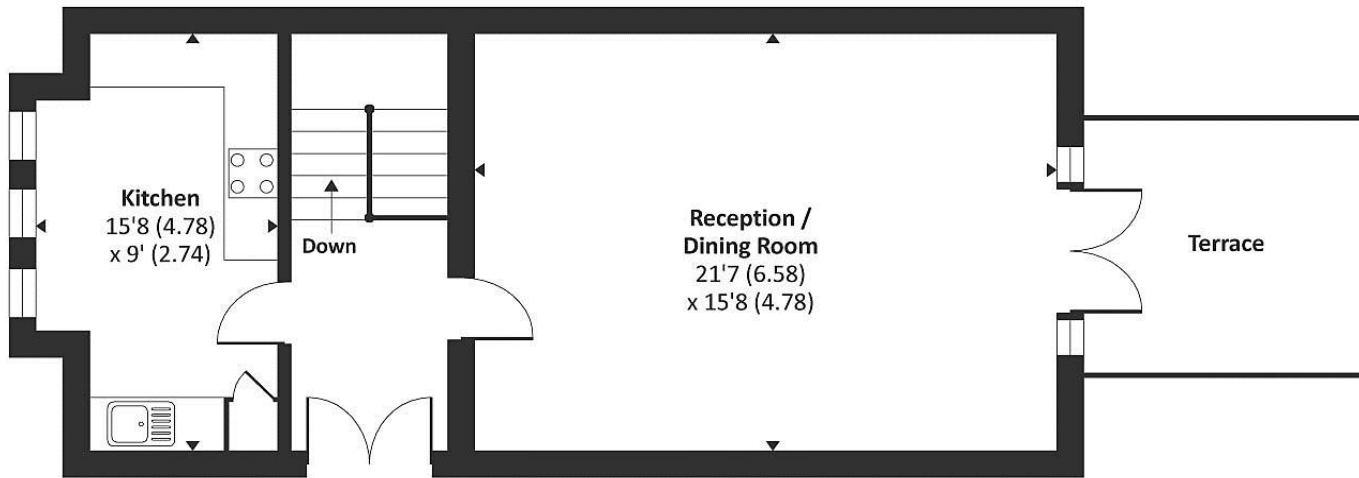
4.9 Stars | 132 Reviews

Find us on social media

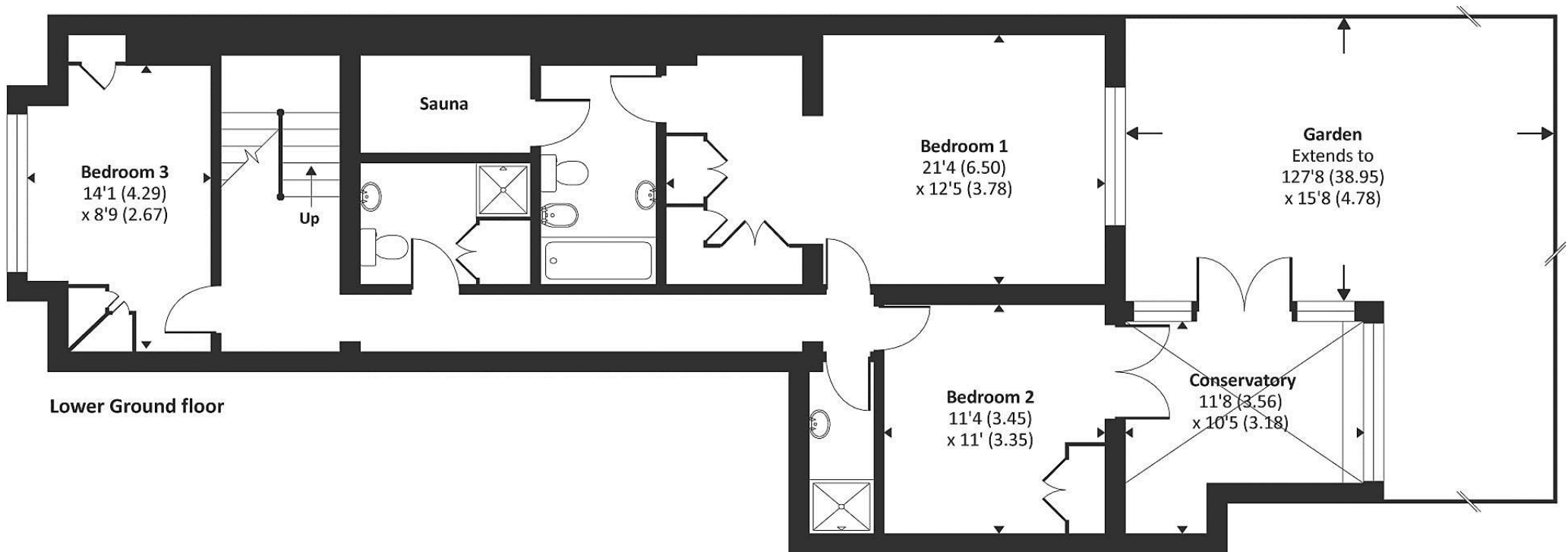
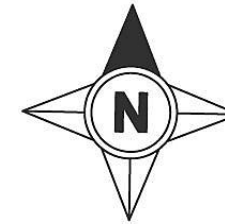
 vitaproperties

 VitaProperties

 VitaProperties



Raised Ground floor



Lower Ground floor

Approx. Gross internal floor area 1598 SQFT / 148.4 SQM
Copyright nichecom.co.uk 2015 Produced for Anscombe & Ringland REF : 28036