



Oval Road, Camden, London, NW1 .| £1,050

- Managed
- Modern
- Moments to Regents Park
- Close to transport and tube

- Patio Garden
- Available 13th February

"Vita Properties have been tremendously helpful throughout the process of securing/renting my flat. Informative about the property, prompt communication, easy to use dashboard for sharing of information, and pleasant to work with. Highly recommend!"

Available 14th February - Vita are proud to present this high spec contemporary 2 bedroom apartment on the cusp of Primrose Hill, moments from Regents Park, and 5 minutes walk to Camden Town tube. Set on the ground floor, the property benefits from generous outside space, floor to ceiling windows, double reception, smart open plan kitchen, master bedroom, second double bedroom, stylish family bathroom.

Latitude House offers a highly desirable location moments from the shops and amenities of Camden High Street while further benefiting from its close proximity to the wide open spaces of Regent's Park and Primrose Hill. The closest transport links are Camden Town Station (Northern line) and Mornington Crescent Station (Northern line).



Oliver Kent

✉ oliver.kent@vitaproperties.uk
☎ +4477 7274 0351



🏠 Flat
🔑 Available
to Let
🛏 x 2
🛋 x 1
🚿 x 1

SCAN FOR
A VIDEO
WALKTHROUGH



"I was very impressed with Vita and their network of buyers. When the sale of my flat fell through (twice) they worked extremely hard to find new buyers in a difficult market - thank you!"



"Working with Vita properties has been a smooth experience! No complaints at all. Our letting agent, Diana has been fantastic and very helpful throughout the whole process. I would highly recommend both Vita properties and Diana."



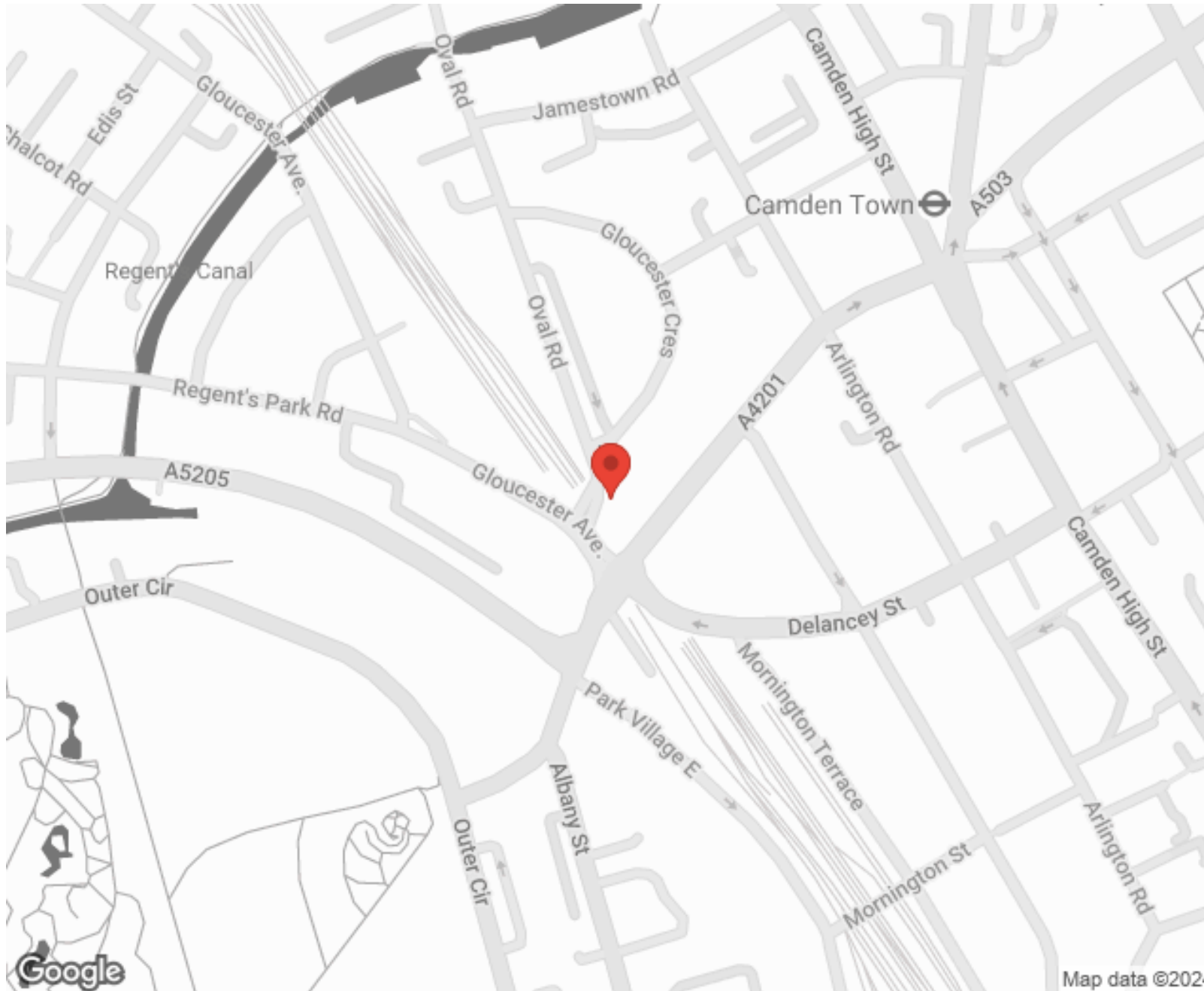
"I used Vita properties to find a flat recently and it was an overall professional, personalised and positive experience. Saira went the extra mile to accommodate to our needs and quick to help us whenever possible."



MORE INFO, PICTURES,
CONTACT ON
OUR WEBSITE



"Vita Properties is a very professional agency. My experience with them was incredible and the entire team was very helpful and kind throughout the renting process. I'd highly recommend!"



SCAN FOR MORE
GOOGLE REVIEWS



Google




4.9 Stars | 132 Reviews

Find us on social media

 vitaproperties

 VitaProperties

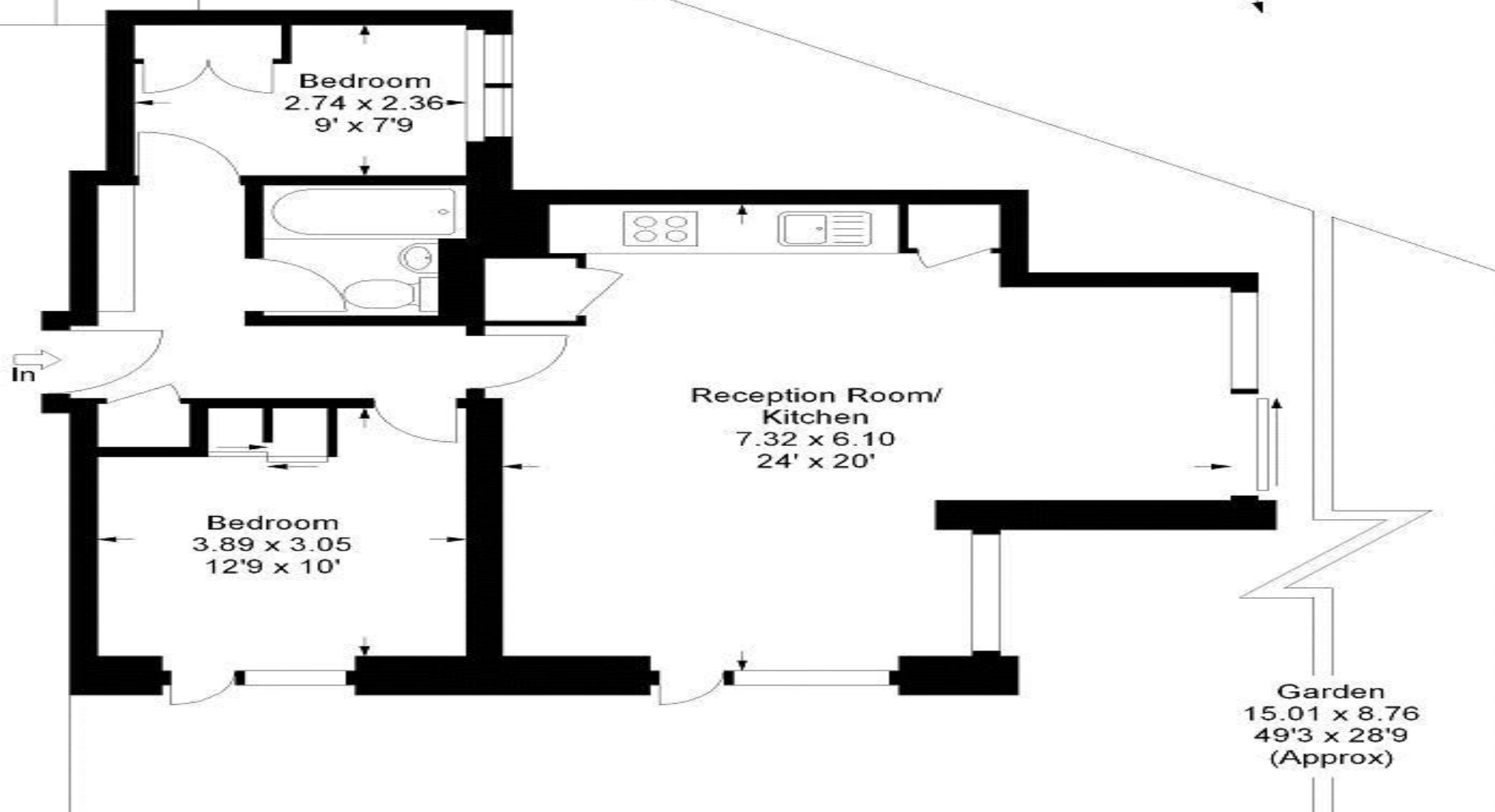
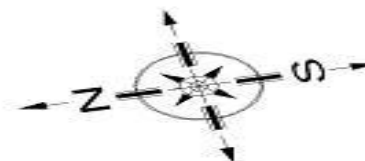
 VitaProperties

Latitude House, NW1

Approx. Gross Internal Area : -
68.47 sq m / 737 sq ft

Illustration For Identification Purposes Only. Not to Scale

* As Defined by RICS - Code of Measuring Practice



Ground Floor