



Fairhazel Gardens, South Hampstead, London, NW6 .| £440,000

- Guest WC & En suite bathroom
- Newly decorated and brand new carpet being installed
- Fitted Wardrobes
- Moments to Swiss Cottage Tube
- Walking distance to Finchley Road
- Offered chain free
- Council tax - C - £1174 per annum

"Vita Properties have been tremendously helpful throughout the process of securing/renting my flat. Informative about the property, prompt communication, easy to use dashboard for sharing of information, and pleasant to work with. Highly recommend!"


OFFERED CHAIN FREE - A spacious and bright one bedroom flat found on the top floor in a period conversion conveniently located close to all local shopping and transport facilities of the Finchley Road and Swiss Cottage. The flat benefits from a separate guest WC, a large double bedroom with fitted wardrobe's and an en-suite shower room with a separate bath.





Oliver Kent


✉ oliver.kent@vitaproperties.uk
☎ +4477 7274 0351




 Flat



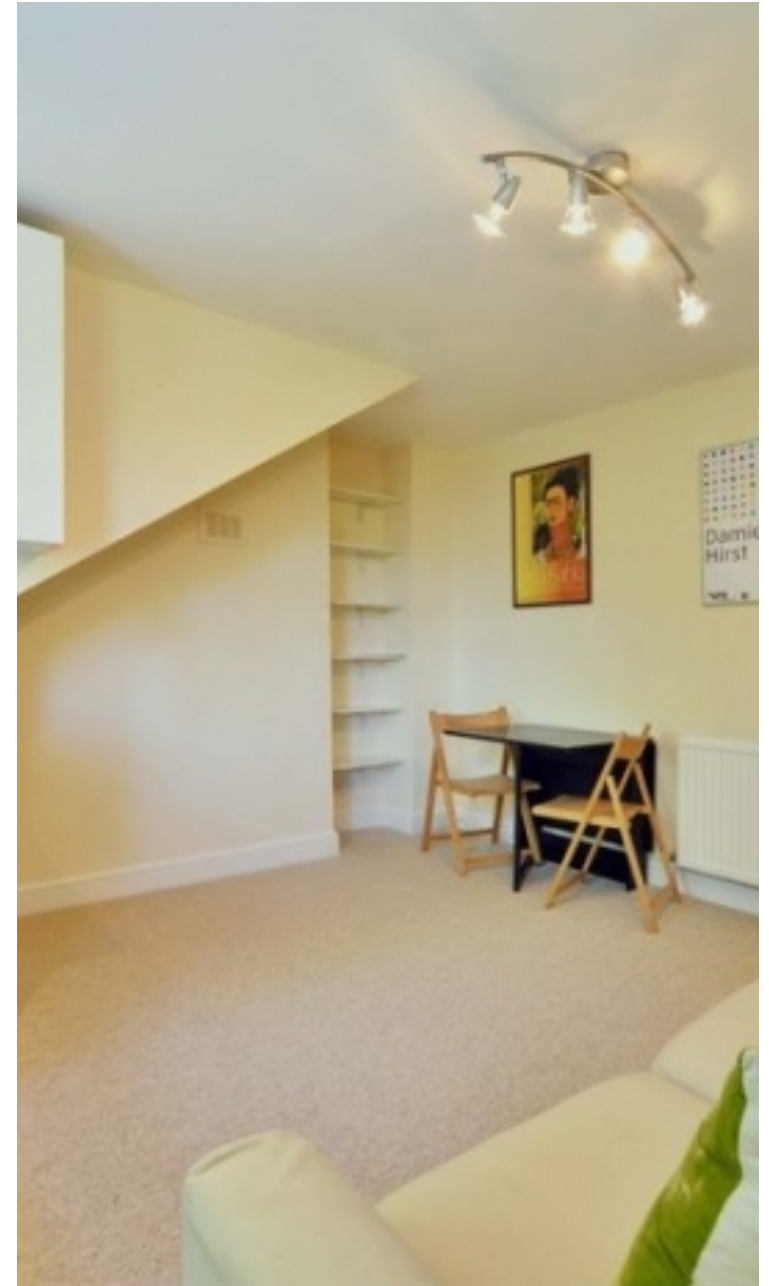
 x 1

 x 1

 x 1



"I was very impressed with Vita and their network of buyers. When the sale of my flat fell through (twice) they worked extremely hard to find new buyers in a difficult market - thank you!"



"Working with Vita properties has been a smooth experience! No complaints at all. Our letting agent, Diana has been fantastic and very helpful throughout the whole process. I would highly recommend both Vita properties and Diana."



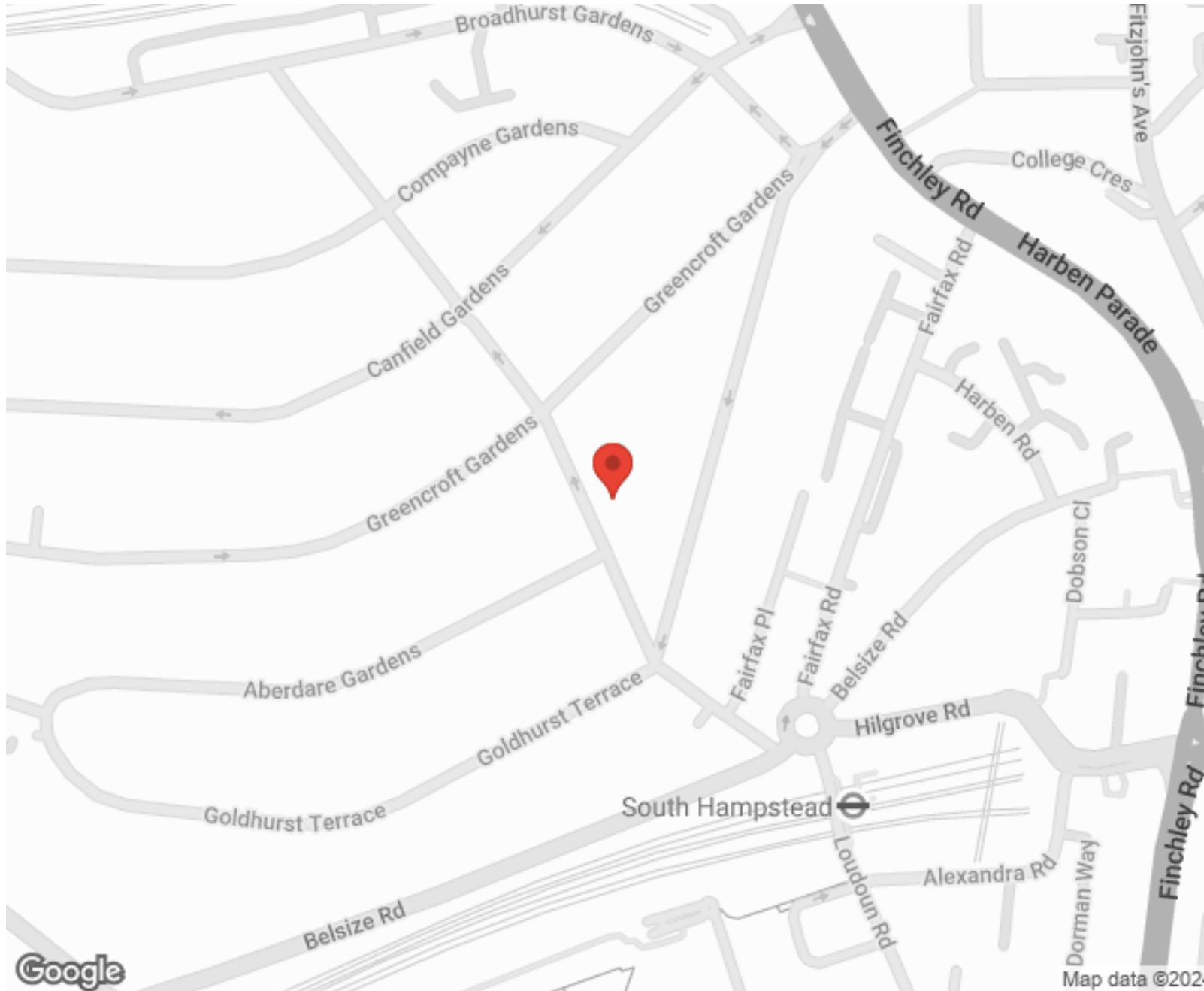
"I used Vita properties to find a flat recently and it was an overall professional, personalised and positive experience. Saira went the extra mile to accommodate to our needs and quick to help us whenever possible."



MORE INFO, PICTURES,
CONTACT ON
OUR WEBSITE



"Vita Properties is a very professional agency. My experience with them was incredible and the entire team was very helpful and kind throughout the renting process. I'd highly recommend!"



SCAN FOR MORE
GOOGLE REVIEWS




Google



4.9 Stars | 132 Reviews

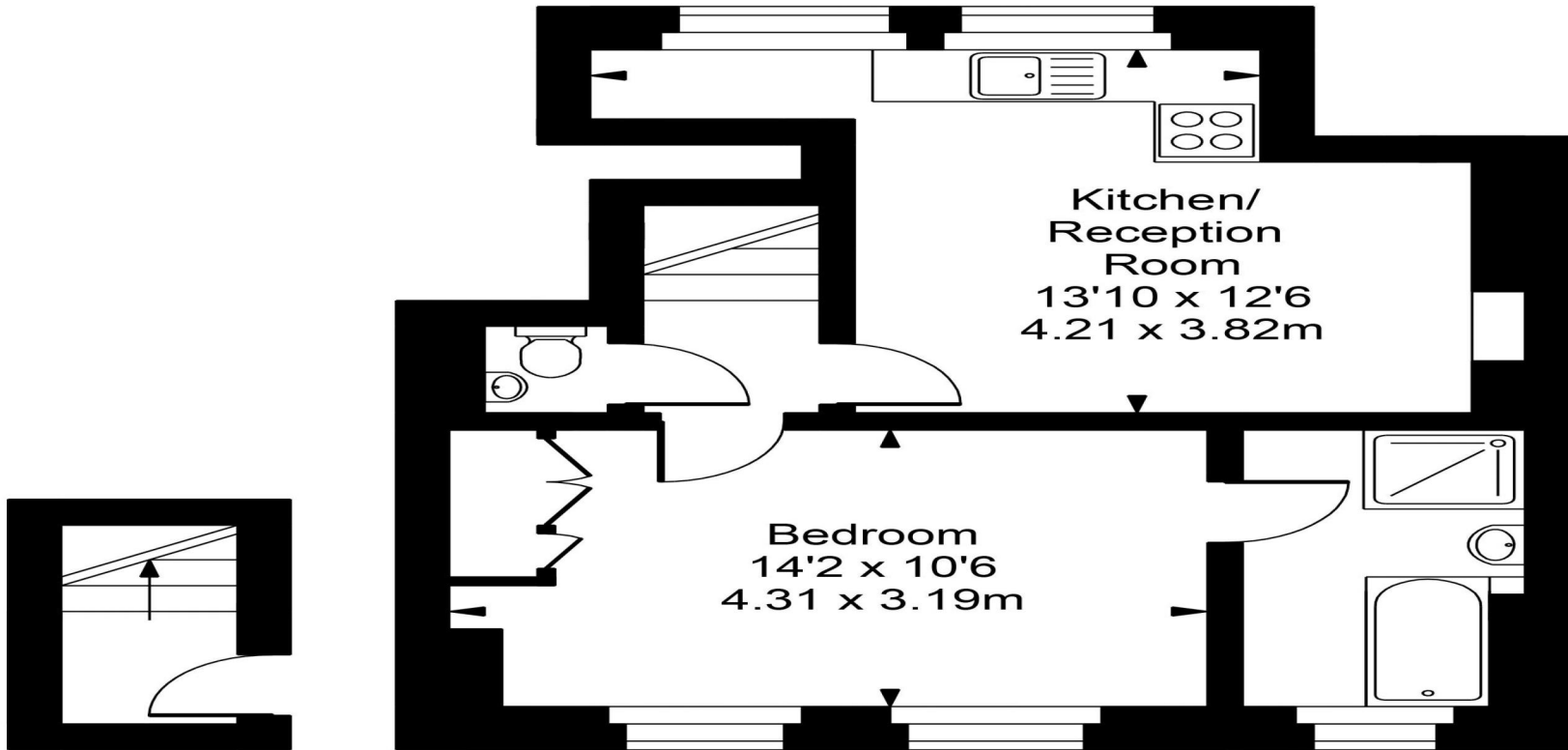
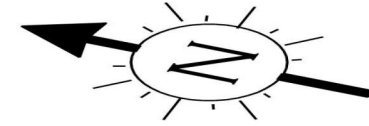
Find us on social media

 vitaproperties

 VitaProperties

 VitaProperties

Fairhazel Gardens



Second Floor

Third Floor



Approx Gross Internal Area **455 Sq Ft - 42.23 Sq M**

For Illustration Purposes Only - Not To Scale
Floor plan by www.creativeplanetlk.com