



VITA
Properties

Frognal, Hampstead, London, NW3 | £1,399,000

- Direct access to a private garden
- Walk-in Wardrobe & En-Suite
- Modern open plan kitchen with all mod cons and wine cooler
- Two large double bedrooms
- Seconds to Finchley Road tube & moments from Hampstead village
- Council tax - F - £1914 per annum
- Share of Freehold

"Vita Properties have been tremendously helpful throughout the process of securing/renting my flat. Informative about the property, prompt communication, easy to use dashboard for sharing of information, and pleasant to work with. Highly recommend!"

We are excited to offer this beautifully refurbished two bedroom raised ground floor flat with an extremely high spec and offering direct access to a garden. The property benefits from a large open plan kitchen & reception area, two large proportioned double bedrooms with walk-in wardrobes and fully tiled en-suite bathrooms. This stunning flat is offered chain free and offers a Share of Freehold

🏠 Flat
🔑
🛏 x 2
🚿 x 1
🚿 x 2



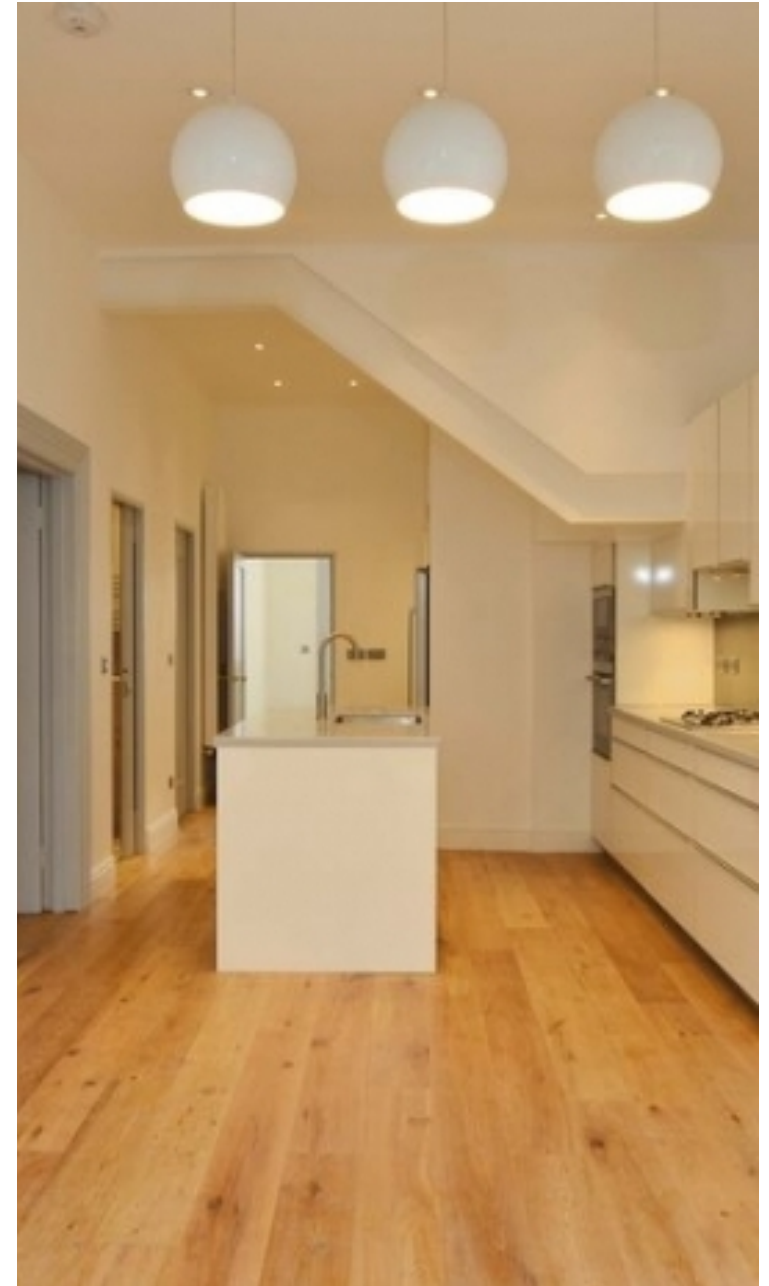
Oliver Kent

✉ oliver.kent@vitaproperties.uk

☎ +4477 7274 0351



"I was very impressed with Vita and their network of buyers. When the sale of my flat fell through (twice) they worked extremely hard to find new buyers in a difficult market - thank you!"



"Working with Vita properties has been a smooth experience! No complaints at all. Our letting agent, Diana has been fantastic and very helpful throughout the whole process. I would highly recommend both Vita properties and Diana."



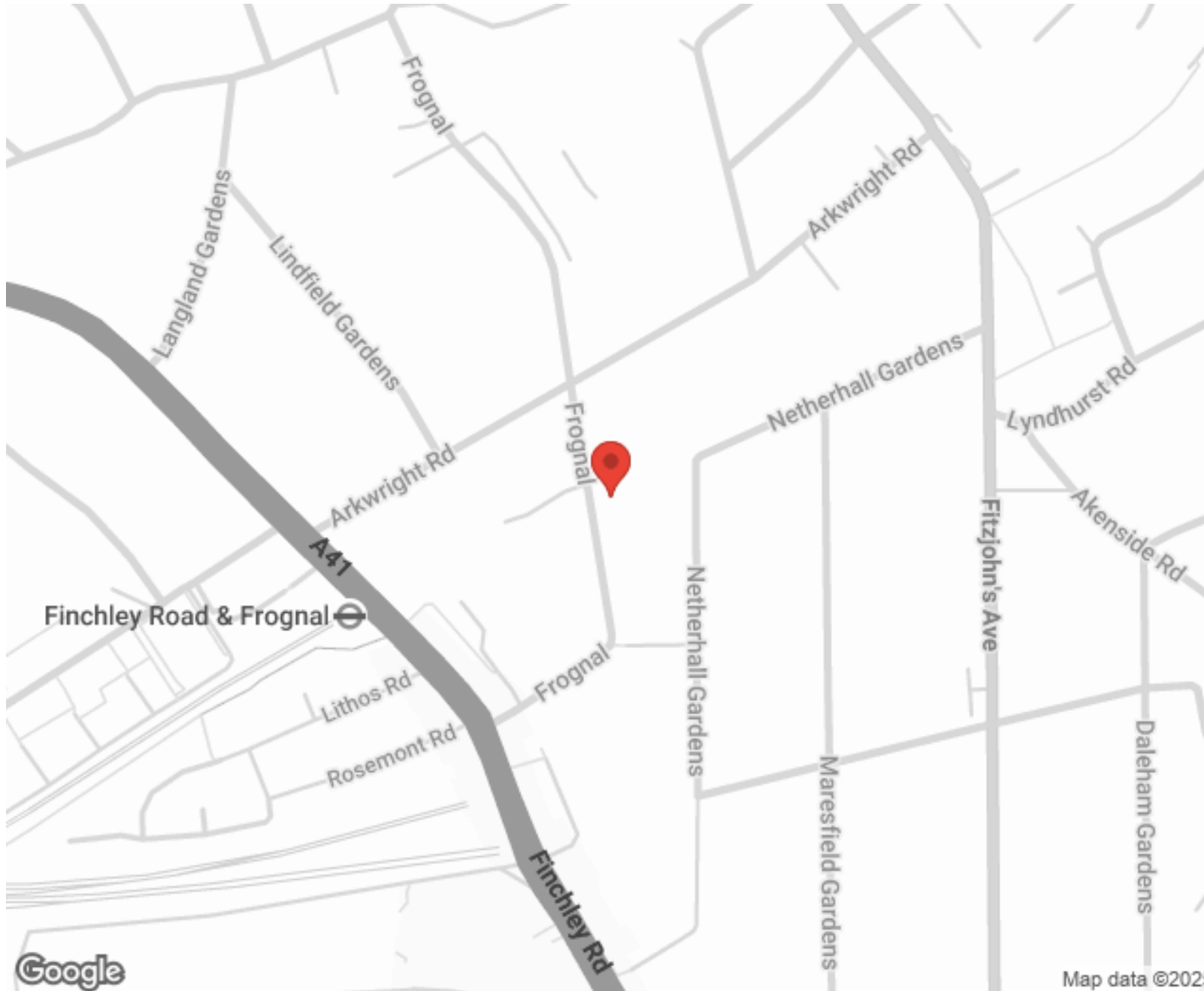
"I used Vita properties to find a flat recently and it was an overall professional, personalised and positive experience. Saira went the extra mile to accommodate to our needs and quick to help us whenever possible."



MORE INFO, PICTURES,
CONTACT ON
OUR WEBSITE



"Vita Properties is a very professional agency. My experience with them was incredible and the entire team was very helpful and kind throughout the renting process. I'd highly recommend!"



SCAN FOR MORE
GOOGLE REVIEWS



Google



4.9 Stars | 132 Reviews

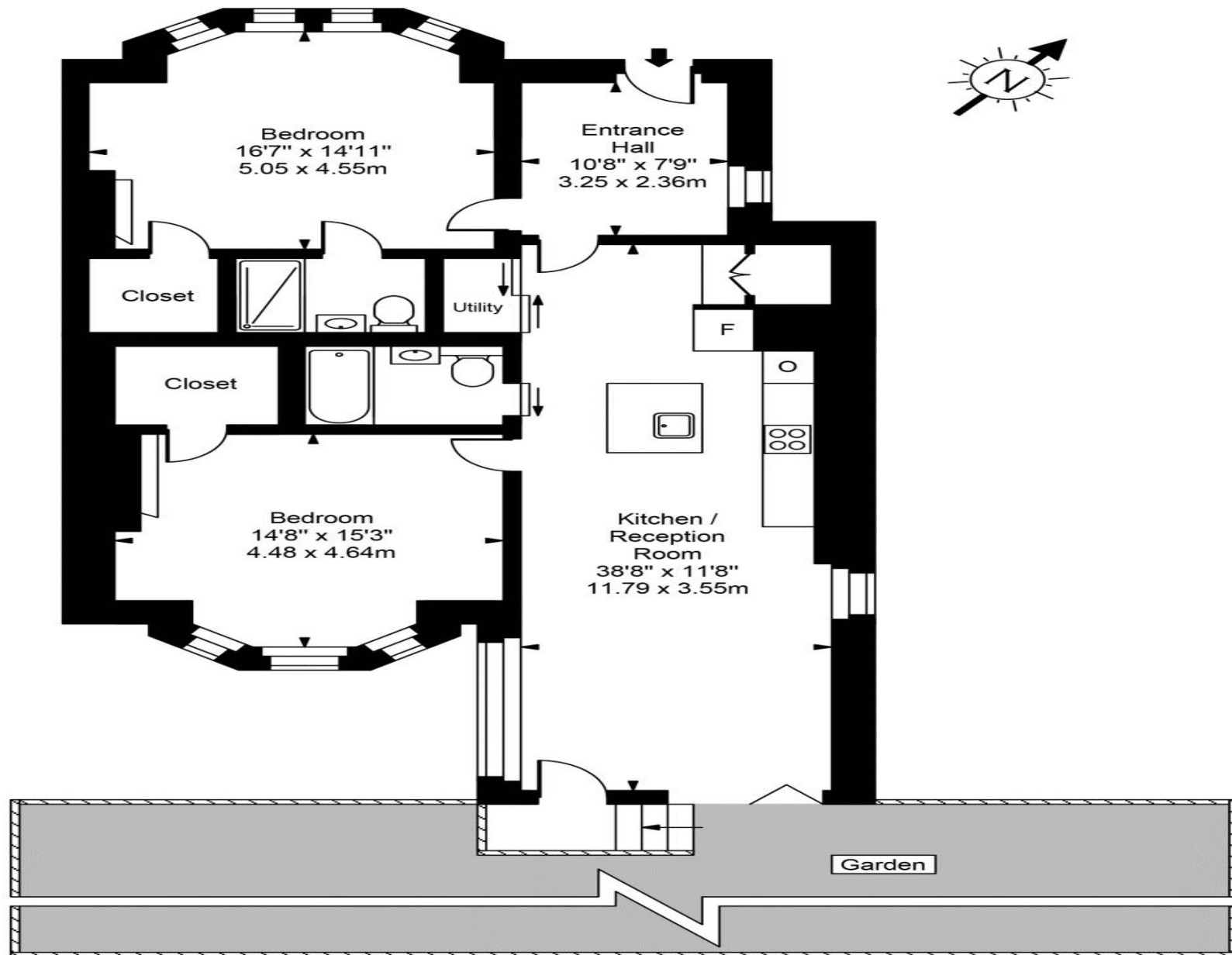
Find us on social media

 vitaproperties

 VitaProperties

 VitaProperties

Frognal



Ground Floor



Approx Gross Internal Area **1187 Sq Ft - 110.28 Sq M**

For Illustration Purposes Only - Not To Scale
Floor plan by www.creativeplanetlk.com