



Pulse Apartments, 52 Lymington Road, Hampstead, NW6 1HQ | £925,000

- Parking & Porter
- Balcony
- Moments to tube
- Underfloor heating
- Two bedrooms Two bathrooms
- Chain free

"Vita Properties have been tremendously helpful throughout the process of securing/renting my flat. Informative about the property, prompt communication, easy to use dashboard for sharing of information, and pleasant to work with. Highly recommend!"

A two bedroom luxury apartment boasting approx. 1000 sq ft in a modern development on the corner of Lymington Road and Finchley Road. This flat boasts two lovely size bedrooms, two bathrooms (1 ensuite) and a modern open plan kitchen. The flat benefits from a spacious lounge surrounded by large windows with a private balcony big enough to entertain, further 2 bedrooms, porter and an allocated parking space. Further benefits include under floor heating and a concierge service as well as being a few minute's walk from transport (Jubilee and Metropolitan Lines) and the O2 Centre

- 🏠 Flat
- 🔑
- 🛏 x 2
- 🚿 x 1
- 🚿 x 2



Oliver Kent

✉️ oliver.kent@vitaproperties.uk

☎️ +4477 7274 0351



"I was very impressed with Vita and their network of buyers. When the sale of my flat fell through (twice) they worked extremely hard to find new buyers in a difficult market - thank you!"



"Working with Vita properties has been a smooth experience! No complaints at all. Our letting agent, Diana has been fantastic and very helpful throughout the whole process. I would highly recommend both Vita properties and Diana."



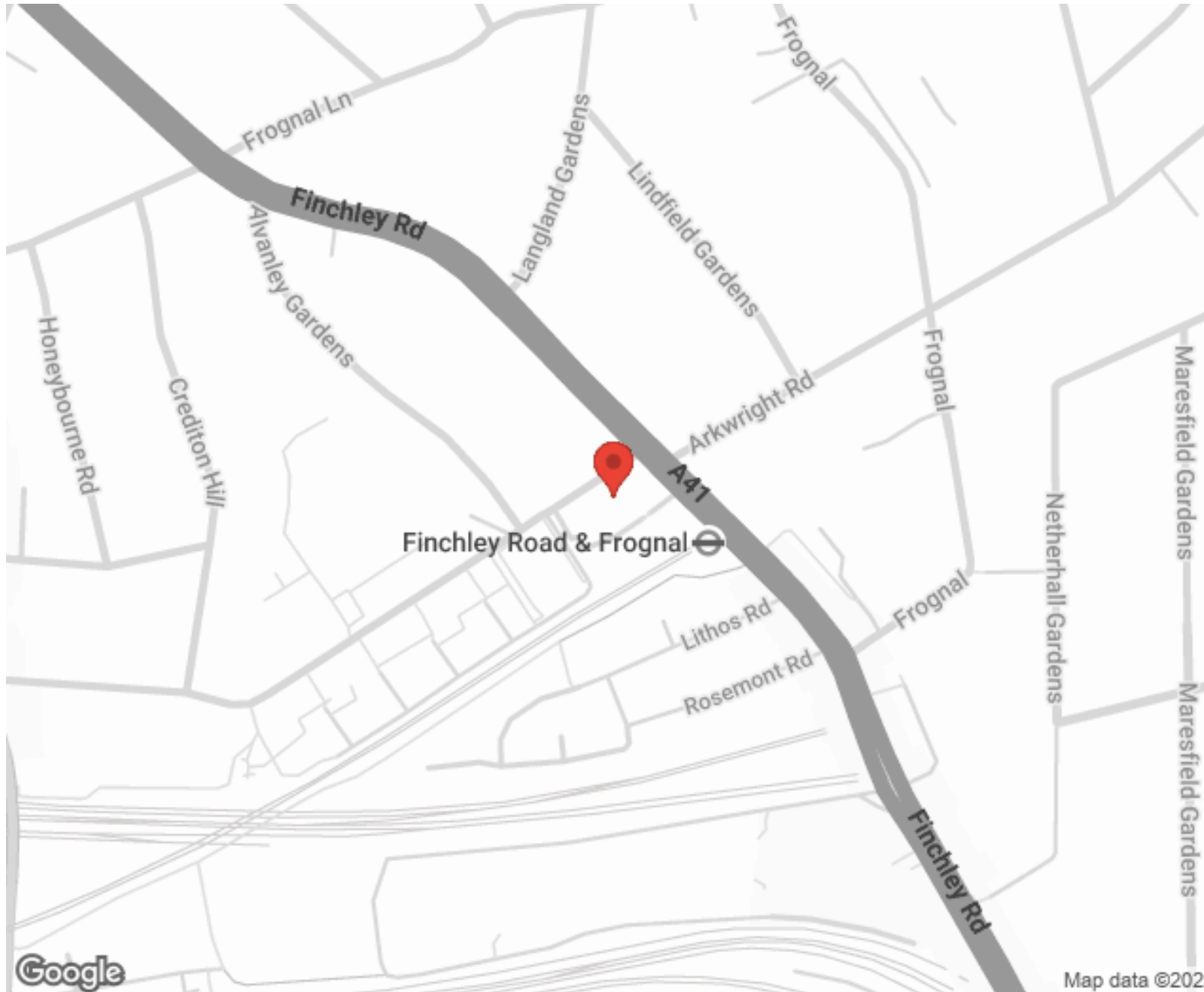
"I used Vita properties to find a flat recently and it was an overall professional, personalised and positive experience. Saira went the extra mile to accommodate to our needs and quick to help us whenever possible."



MORE INFO, PICTURES,
CONTACT ON
OUR WEBSITE



"Vita Properties is a very professional agency. My experience with them was incredible and the entire team was very helpful and kind throughout the renting process. I'd highly recommend!"



SCAN FOR MORE
GOOGLE REVIEWS



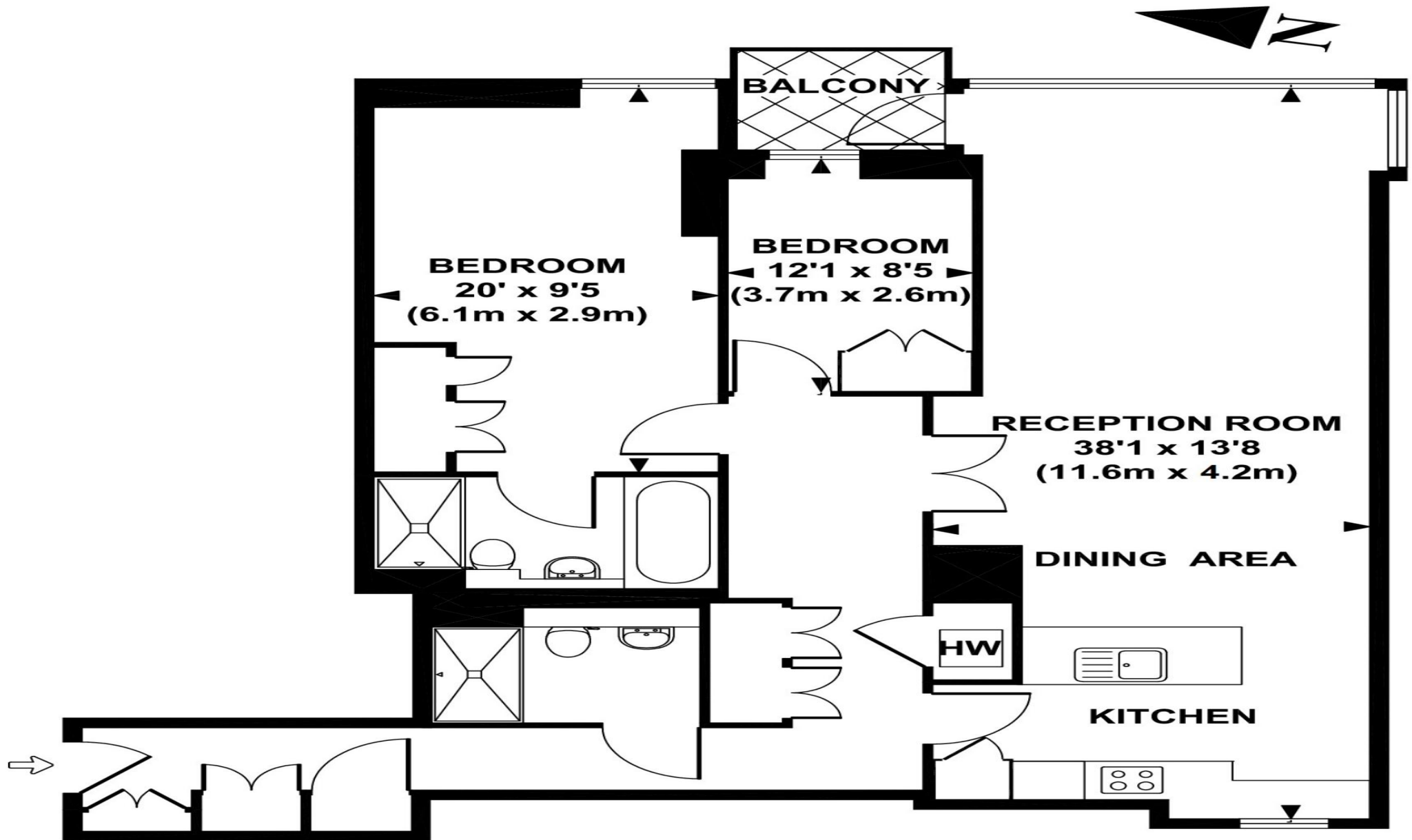
Google



4.9 Stars | 132 Reviews

Find us on social media





FIFTH FLOOR

APPROX. GROSS INTERNAL FLOOR AREA 1,050 SQ FT / 97.6 SQ

This floorplan is for illustration purposes and may not truly reflect design or dimensions and should not be used for valuation or condition purposes .