



Fitzjohns Avenue, Hampstead, London, NW3 .| £395

- Open plan kitchen/reception
- Large bedroom with fitted storage
- Modern
- Moments to tube

- Fitted open plan kitchen
- Available immediately

"Vita Properties have been tremendously helpful throughout the process of securing/renting my flat. Informative about the property, prompt communication, easy to use dashboard for sharing of information, and pleasant to work with. Highly recommend!"

---

Available immediately on an unfurnished basis is this spacious one double bedroom apartment set on the first floor of a period conversion located on a tree-lined street within 500m to both Finchley Road & Swiss Cottage stations. The property has a modern finish and enjoys an open plan kitchen/reception with bay window, a large bedroom, a tiled bathroom.

The flat further benefits from being only minutes away from Hampstead and Belsize Village - 1st to see will take!



Oliver Kent

✉ [oliver.kent@vitaproperties.uk](mailto:oliver.kent@vitaproperties.uk)  
☎ +4477 7274 0351



🏠 Flat  
🔑 Available  
to Let  
🛏 x 1  
🛋 x 1  
🚿 x 1



"I was very impressed with Vita and their network of buyers. When the sale of my flat fell through (twice) they worked extremely hard to find new buyers in a difficult market - thank you!"

---



"Working with Vita properties has been a smooth experience! No complaints at all. Our letting agent, Diana has been fantastic and very helpful throughout the whole process. I would highly recommend both Vita properties and Diana."

---





"I used Vita properties to find a flat recently and it was an overall professional, personalised and positive experience. Saira went the extra mile to accommodate to our needs and quick to help us whenever possible."

---

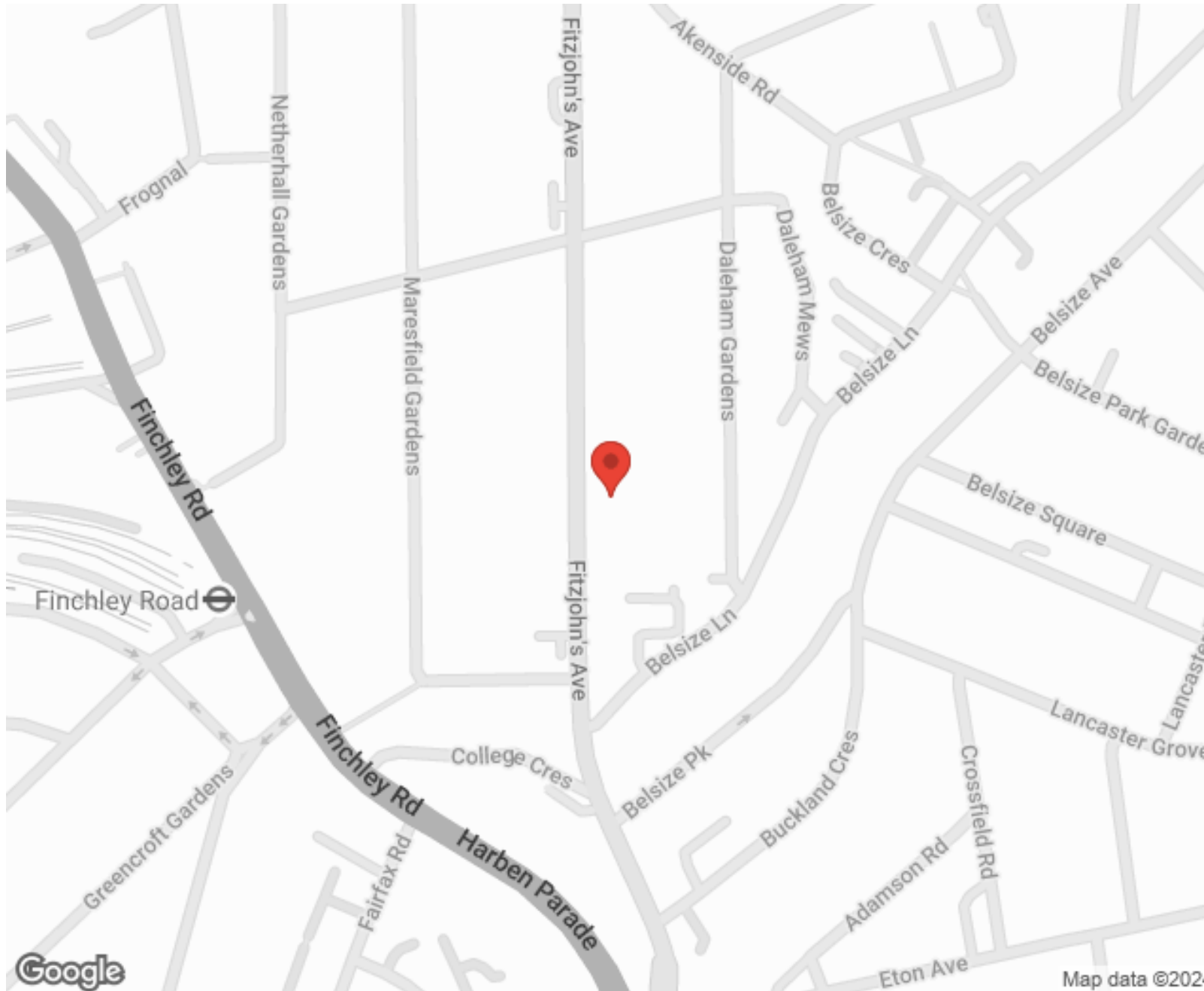


MORE INFO, PICTURES,  
CONTACT ON  
OUR WEBSITE



"Vita Properties is a very professional agency. My experience with them was incredible and the entire team was very helpful and kind throughout the renting process. I'd highly recommend!"

---



SCAN FOR MORE  
GOOGLE REVIEWS



Google



4.9 Stars | 132 Reviews

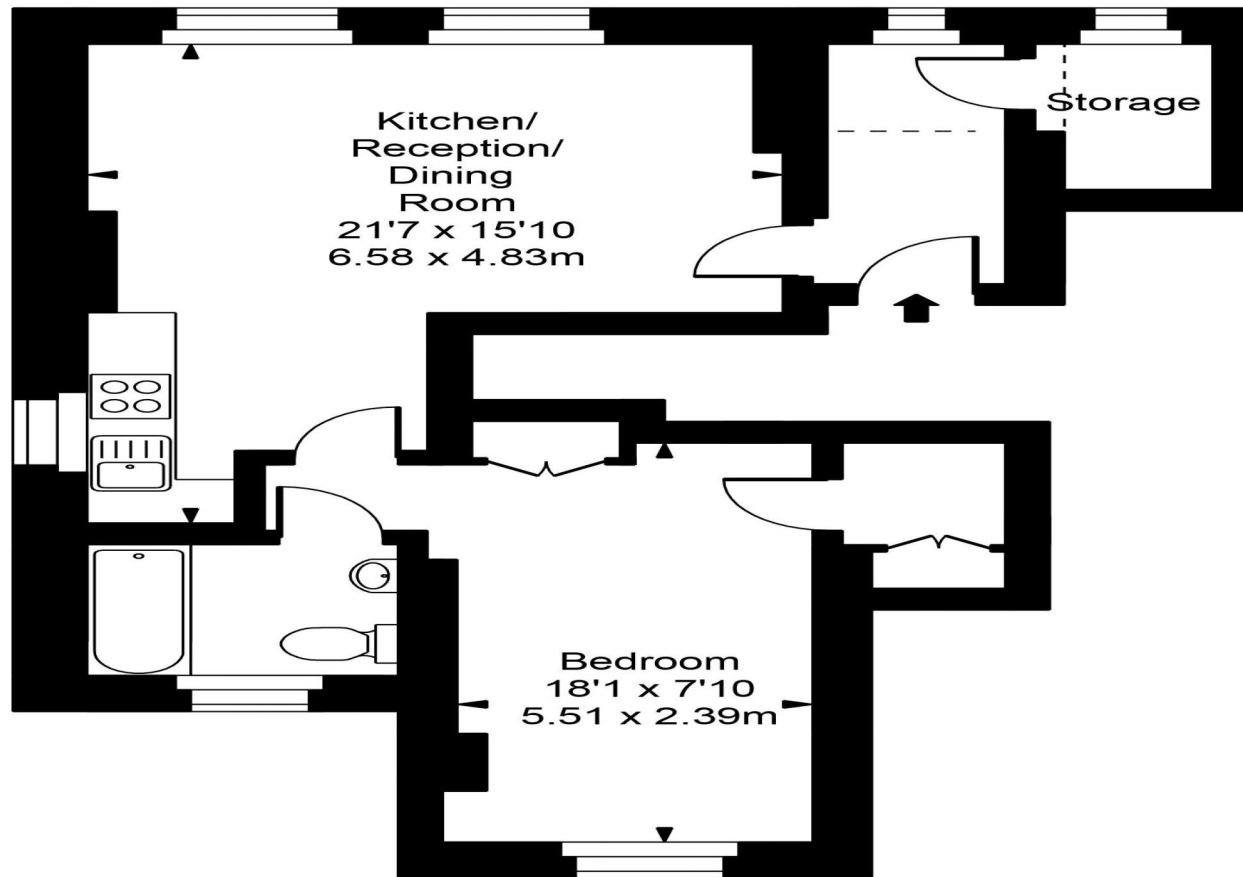
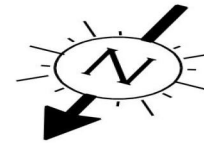
Find us on social media

 vitaproperties

 VitaProperties

 VitaProperties

## Fitzjohns Avenue



Approx Gross Internal Area **578 Sq Ft - 53.70 Sq M**

For Illustration Purposes Only - Not To Scale  
Floor plan by [www.creativeplanetlk.com](http://www.creativeplanetlk.com)