



Westfield, Kidderpore Avenue, Hampstead, London, NW3 .| £1,195,000

- Parking
- Swimming Pool & Gym
- Porter
- Long Lease approx 998 years

- Service charge approx £6000 per annum

"Vita Properties have been tremendously helpful throughout the process of securing/renting my flat. Informative about the property, prompt communication, easy to use dashboard for sharing of information, and pleasant to work with. Highly recommend!"

A three bedroom apartment in this popular, portered development with resident's leisure facilities (including Swimming Pool and Gym) and underground parking.

The property comprises of a large reception with picture frame windows giving generous views, 2 double bedrooms (1 en suite) and 1 single bedroom, all with built-in storage. There is also a main bathroom and open plan kitchen.






Kidderpore Avenue is located moments to Hampstead Heath, Finchley Road amenities



Oliver Kent

✉ [oliver.kent@vitaproperties.uk](mailto:oliver.kent@vitaproperties.uk)  
☎ +4477 7274 0351





Flat  
  
x 3  
x 1  
x 2





"I was very impressed with Vita and their network of buyers. When the sale of my flat fell through (twice) they worked extremely hard to find new buyers in a difficult market - thank you!"

---



"Working with Vita properties has been a smooth experience! No complaints at all. Our letting agent, Diana has been fantastic and very helpful throughout the whole process. I would highly recommend both Vita properties and Diana."

---





"I used Vita properties to find a flat recently and it was an overall professional, personalised and positive experience. Saira went the extra mile to accommodate to our needs and quick to help us whenever possible."

---

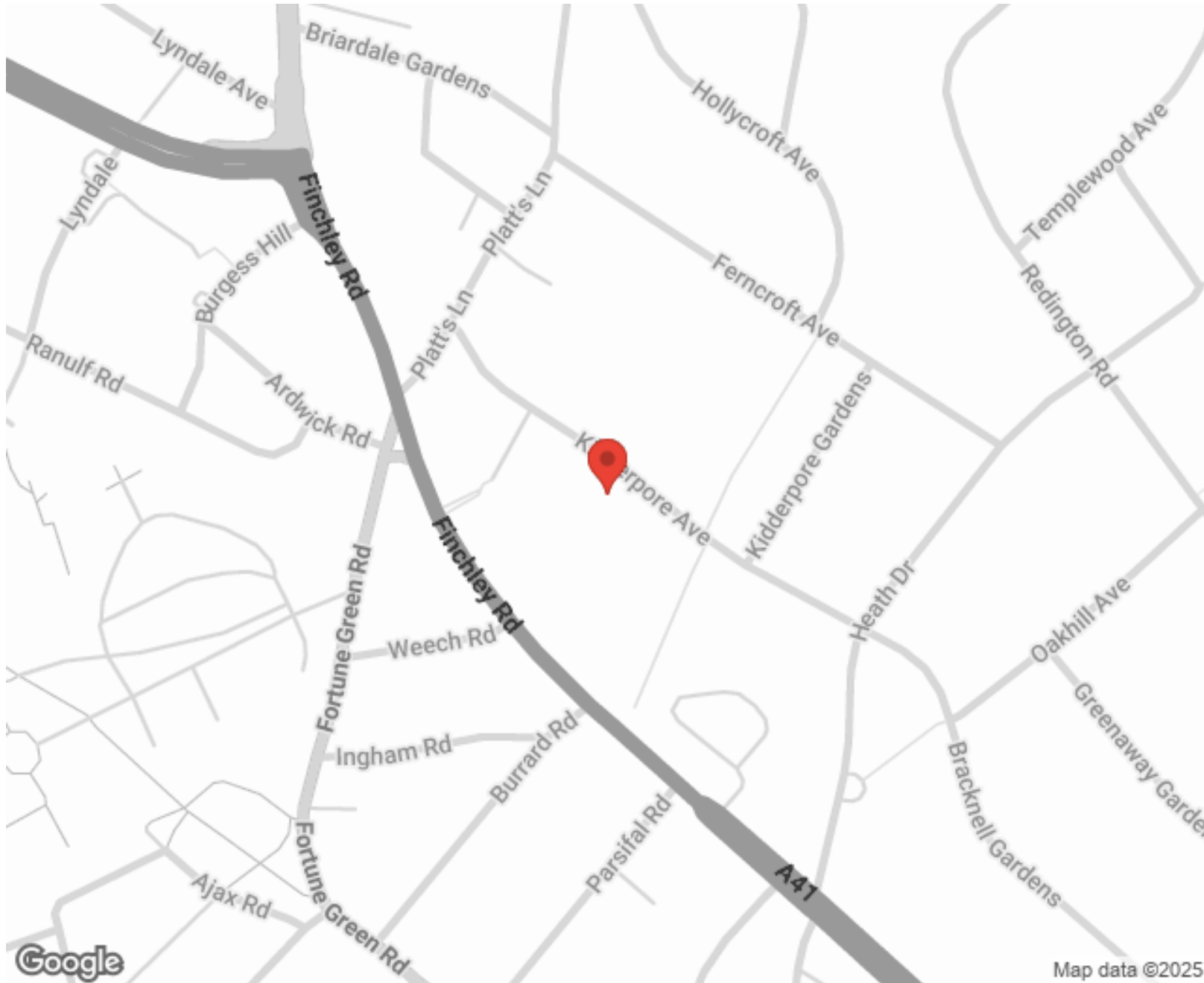


**MORE INFO, PICTURES,  
CONTACT ON  
OUR WEBSITE**



"Vita Properties is a very professional agency. My experience with them was incredible and the entire team was very helpful and kind throughout the renting process. I'd highly recommend!"

---



SCAN FOR MORE  
GOOGLE REVIEWS



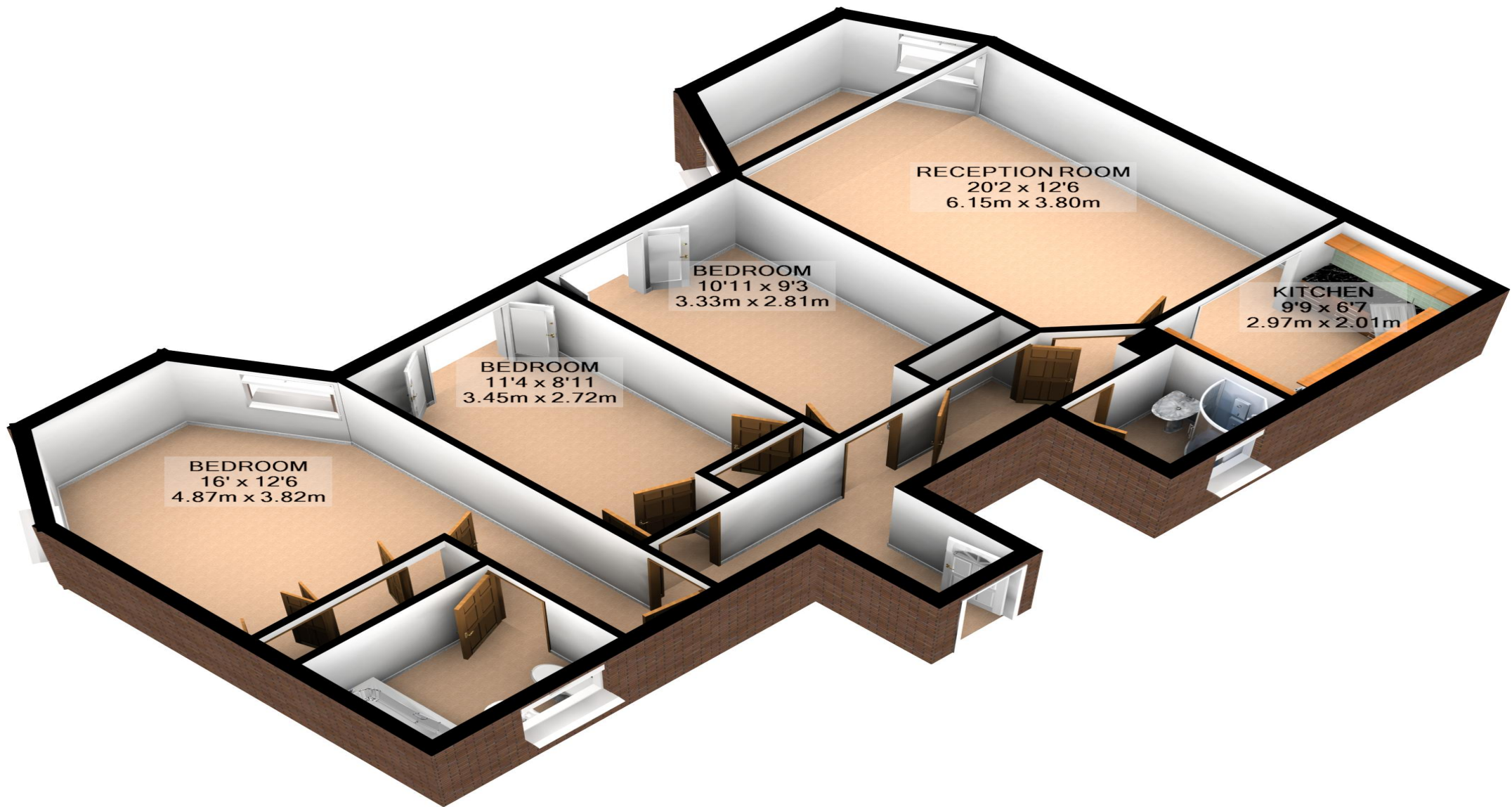
Google



4.9 Stars | 132 Reviews

Find us on social media





**Total Approx. Floor Area 1025 Sq.Ft. (95.2 Sq.M.)**

KeyAGENT LTD Floor Plans are produced and provided for illustration purposes only. Whilst every attempt has been made to ensure the plan is accurate and presents the property in the best way, measurements of doors, windows and rooms are approximate and no responsibility is taken for any error, omission or mis-statement. To find out more about KeyAGENT please visit [www.keyagent.co.uk](http://www.keyagent.co.uk)  
(Tel: 0845 475 4165)  
Made with Metropix ©2012