



VITA
Properties

Westbere Road, London, NW2 | £375

- One Double Bed Apartment
- Fitted storage
- Furnished
- Within walking to 2 train stations

- Guest WC
- Available mid July 2023

"Vita Properties have been tremendously helpful throughout the process of securing/renting my flat. Informative about the property, prompt communication, easy to use dashboard for sharing of information, and pleasant to work with. Highly recommend!"

Experience the perfect blend of convenience and comfort with this exceptional one double bedroom apartment. Ideally situated just a stone's throw away from Kilburn tube station and within walking distance to local shops and amenities, this superb flat offers a prime location for effortless city living.

Located on the first floor, this bright and airy apartment is flooded with natural light, creating a welcoming and inviting atmosphere. The neutral decoration throughout adds a touch of elegance and versatility, allowing you to personalize the space according to your style.

The open plan kitchen features fully integrated appliances including a washer/dryer, gas cooker, oven, fridge/freezer, and ample storage space. The seamless flow into the lounge, which also boasts a dining area, makes this flat an ideal choice for a professional couple or single occupant looking for a comfortable and functional living space.

The spacious bedroom is equipped with a double bed and fitted wardrobes, providing great storage solutions. The interlinking bathroom offers a relaxin

n, complete with a bath tub, shower, WC, and sink.

With wooden flooring throughout, this flat exudes a modern and stylish ambiance. Additionally, gas central heating ensures a cozy and comfortable environment all year round.

Don't miss out on the opportunity to make this remarkable apartment your own. Contact us today to arrange a viewing and discover the convenience and quality of living in this sought-after location. Your dream home awaits!

🏠 Flat

🔑 Under Negotiation

🛏 x 1

🛋 x 1

🚿 x 1



Oliver Kent

✉ oliver.kent@vitaproperties.uk

☎ +4477 7274 0351



"I was very impressed with Vita and their network of buyers. When the sale of my flat fell through (twice) they worked extremely hard to find new buyers in a difficult market - thank you!"



"Working with Vita properties has been a smooth experience! No complaints at all. Our letting agent, Diana has been fantastic and very helpful throughout the whole process. I would highly recommend both Vita properties and Diana."



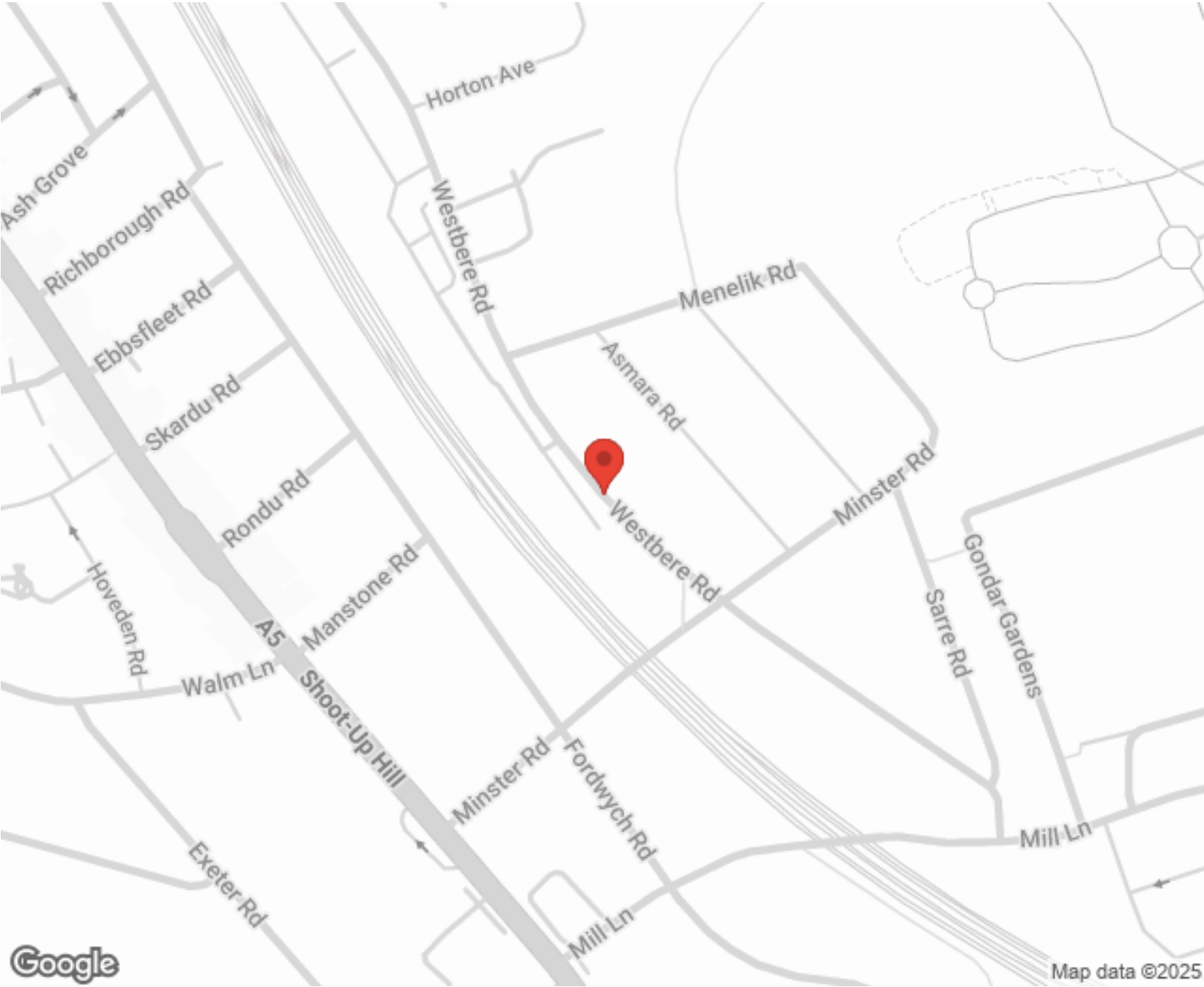
"I used Vita properties to find a flat recently and it was an overall professional, personalised and positive experience. Saira went the extra mile to accommodate to our needs and quick to help us whenever possible."



**MORE INFO, PICTURES,
CONTACT ON
OUR WEBSITE**



"Vita Properties is a very professional agency. My experience with them was incredible and the entire team was very helpful and kind throughout the renting process. I'd highly recommend!"



Energy Efficiency Rating		Environmental Impact (CO ₂) Rating	
	Current	Potential	
Very energy efficient - lower running costs			
(92-100) A			
(81-91) B			
(69-80) C			
(55-68) D			
(39-54) E			
(21-38) F			
(1-20) G			
Not energy efficient - higher running costs			
EU Directive		EU Directive	
England, Scotland & Wales		England, Scotland & Wales	

Energy Efficiency Rating		Environmental Impact (CO ₂) Rating	
	Current	Potential	
Very environmentally friendly - lower CO ₂ emissions			
(92-100) A			
(81-91) B			85
(69-80) C			
(55-68) D			71
(39-54) E			
(21-38) F			
(1-20) G			
Not environmentally friendly - higher CO ₂ emissions			
EU Directive		EU Directive	
England, Scotland & Wales		England, Scotland & Wales	

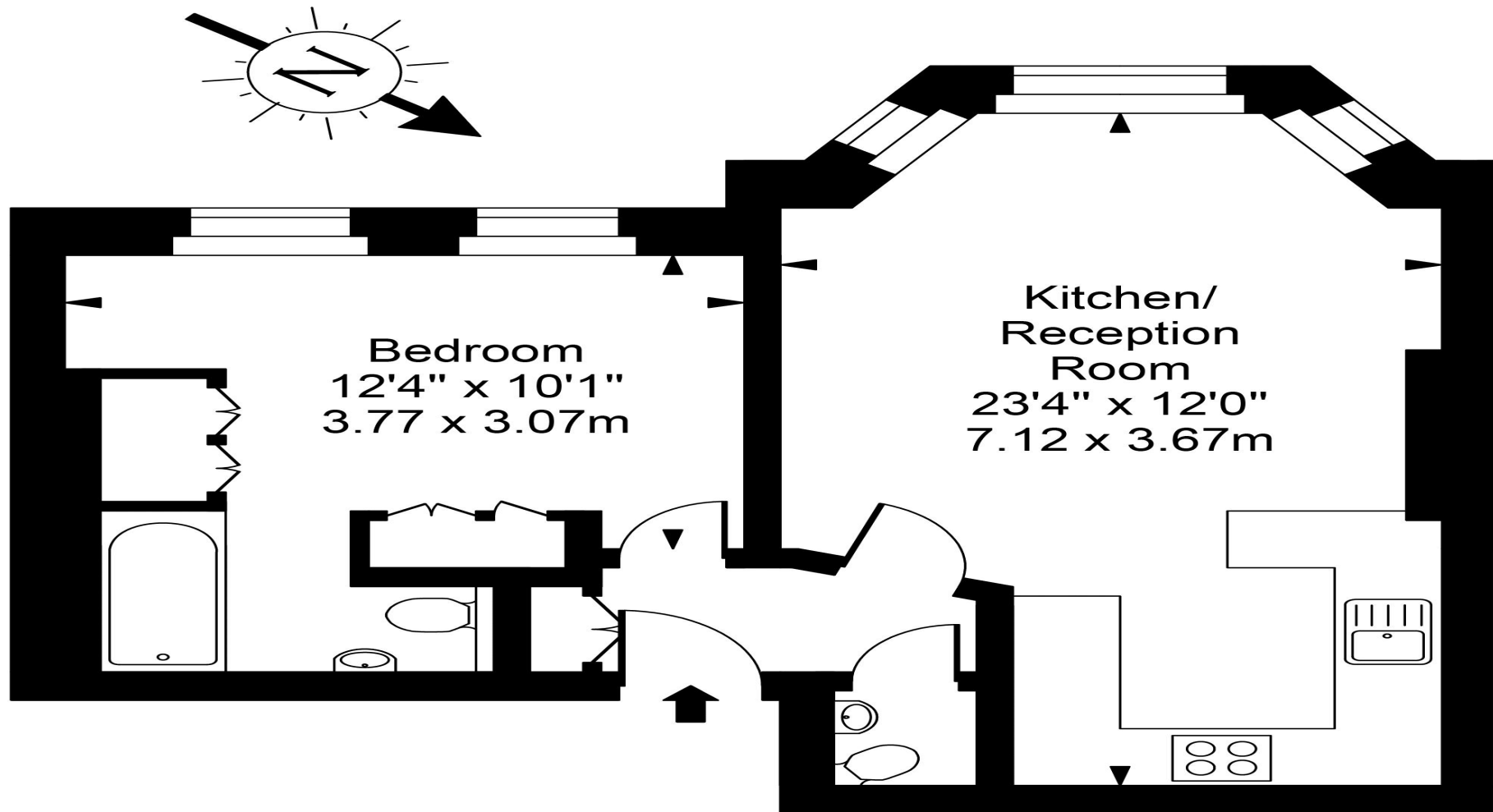
SCAN FOR MORE
GOOGLE REVIEWS

Google
★★★★★
4.9 Stars | 132 Reviews

Find us on social media

vitaproperties
 VitaProperties
 VitaProperties

Westbere Road



First Floor



Approx Gross Internal Area **443 Sq Ft - 41.11 Sq M**

For Illustration Purposes Only - Not To Scale
Floor plan by www.creativeplanetlk.com