



Westfield, Kidderpore Avenue, London, NW3 .| £794,995

- 84 sq meters - 904 sq ft
- Duplex
- Modern
- 2 Terraces

- Chain free
- Allocated parking
- Leasehold; 996 years approx unexpired

"Vita Properties have been tremendously helpful throughout the process of securing/renting my flat. Informative about the property, prompt communication, easy to use dashboard for sharing of information, and pleasant to work with. Highly recommend!"

We are delighted to offer for sale this third Floor lateral apartment situated within this sought after Hampstead Development. The property comprises 900 sq ft and benefits a Fully Fitted Kitchen open planned to an attractive sized lounge, Three Bathrooms with One Ensuite, Three Balconies, Wood Strip Flooring, an entry phone system and the added bonus of an allocated secure underground car parking space. The development has a 24 hour concierge service and also boasts stunning communal gardens, Lifts, a private indoor swimming pool as well as a sauna, jacuzzi and changing facilities including a gymnasium. Westfield is conveniently located close to Hampstead, West Hampstead and Swiss Cottage offering a wide variety of local shops and amenities.

Transportation links include West Hampstead, Finchley Road and Swiss Cottage Tube Stations ( All Jubilee Line) and Hampstead Tube Station (Northern Line)



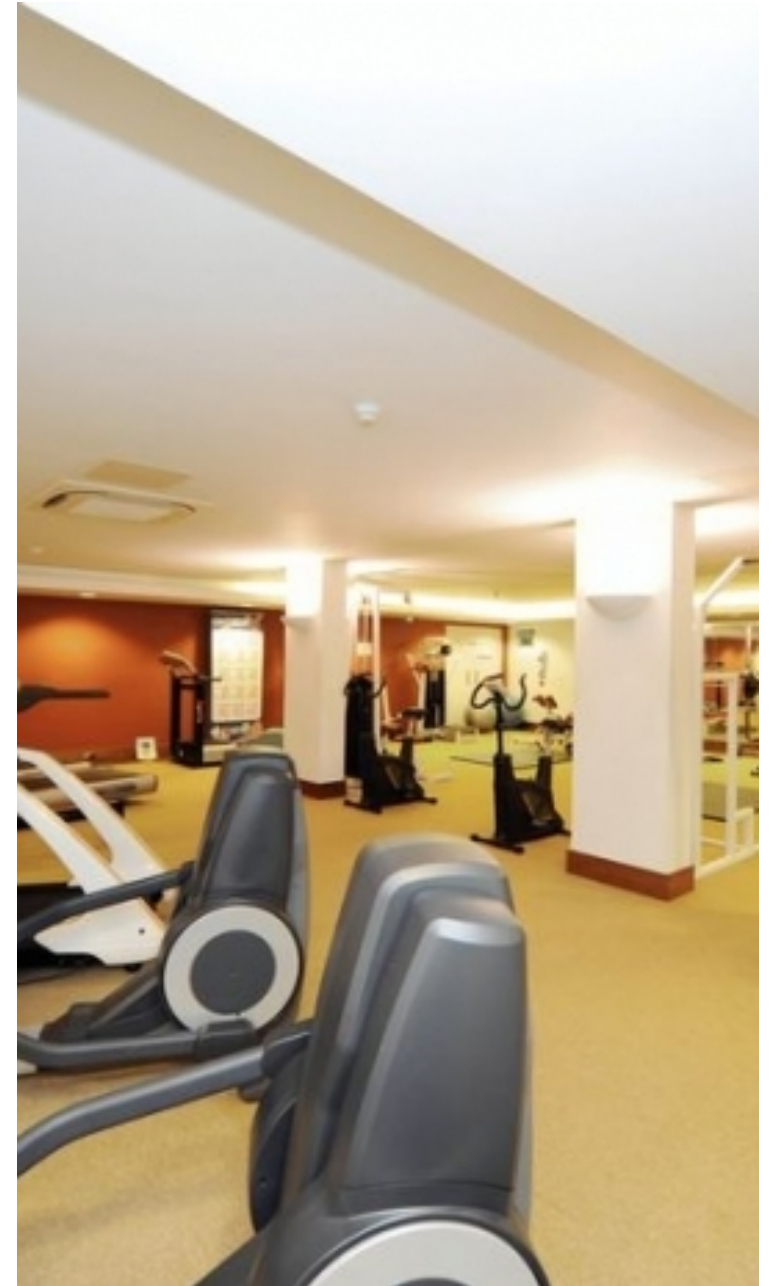
Oliver Kent

✉ [oliver.kent@vitaproperties.uk](mailto:oliver.kent@vitaproperties.uk)  
☎ +4477 7274 0351



"I was very impressed with Vita and their network of buyers. When the sale of my flat fell through (twice) they worked extremely hard to find new buyers in a difficult market - thank you!"

---





"Working with Vita properties has been a smooth experience! No complaints at all. Our letting agent, Diana has been fantastic and very helpful throughout the whole process. I would highly recommend both Vita properties and Diana."

---



"I used Vita properties to find a flat recently and it was an overall professional, personalised and positive experience. Saira went the extra mile to accommodate to our needs and quick to help us whenever possible."

---

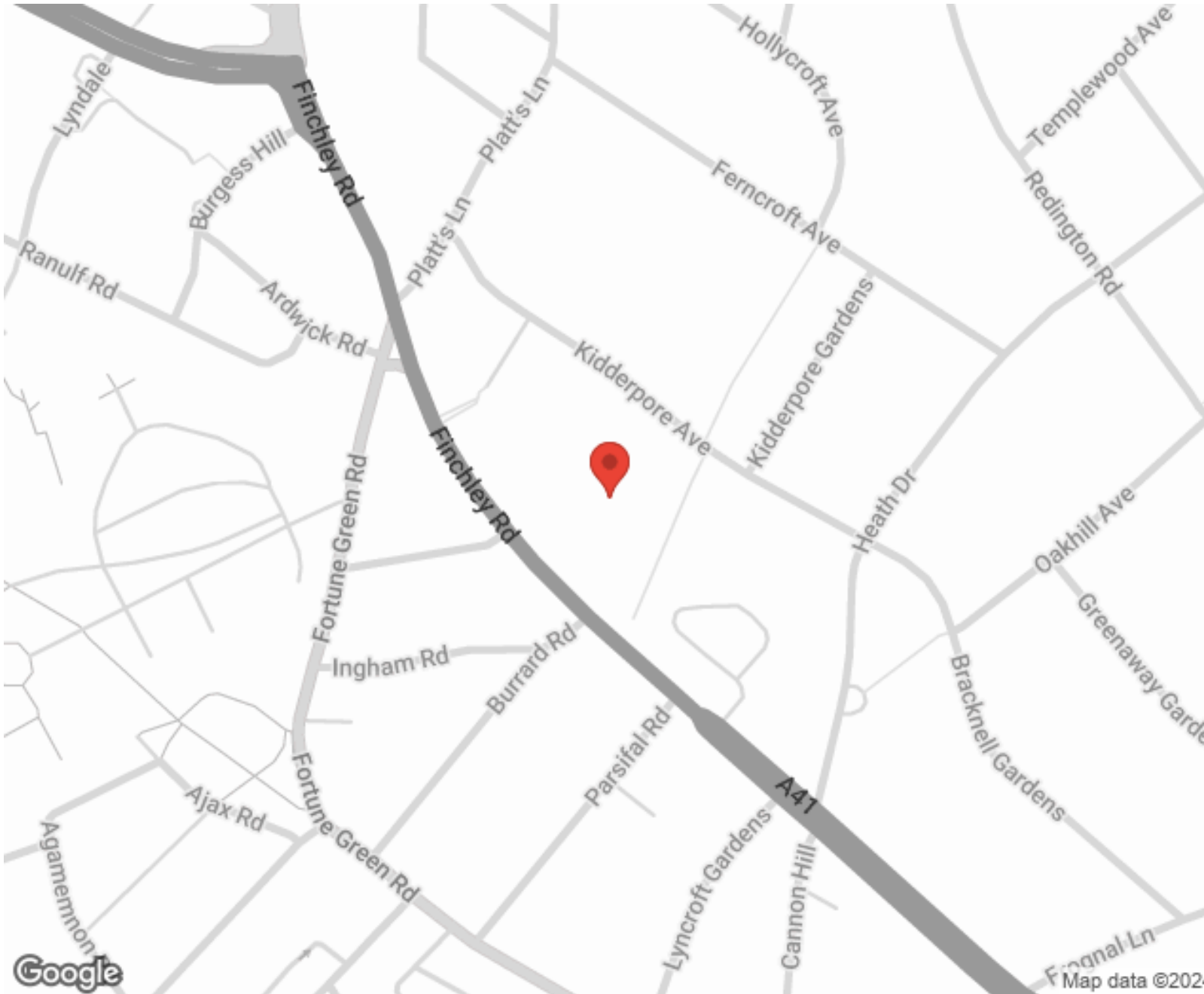


**MORE INFO, PICTURES,  
CONTACT ON  
OUR WEBSITE**



"Vita Properties is a very professional agency. My experience with them was incredible and the entire team was very helpful and kind throughout the renting process. I'd highly recommend!"

---



SCAN FOR MORE  
GOOGLE REVIEWS





Google

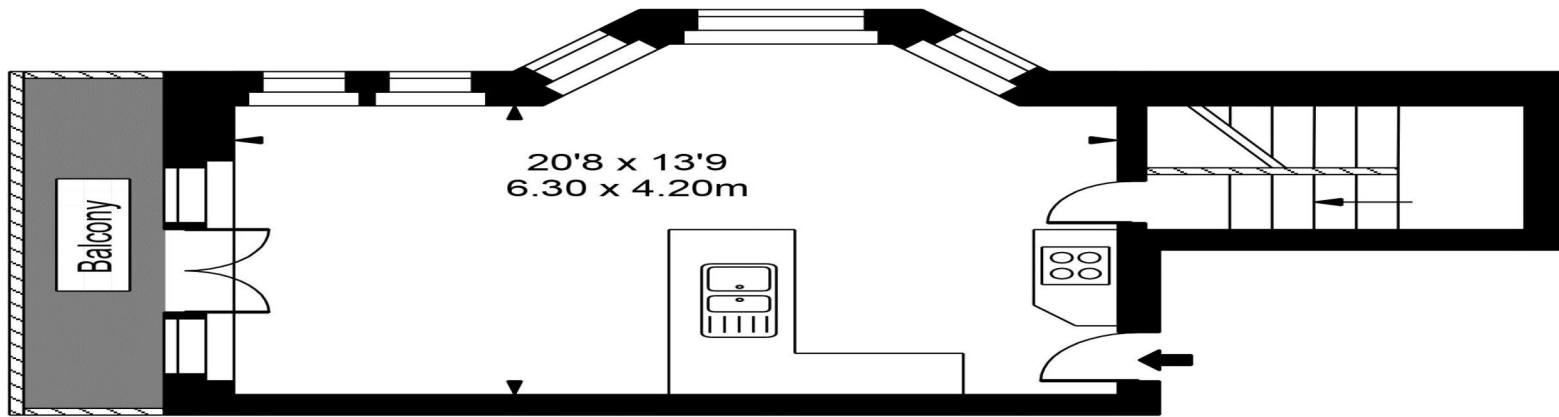


4.9 Stars | 132 Reviews

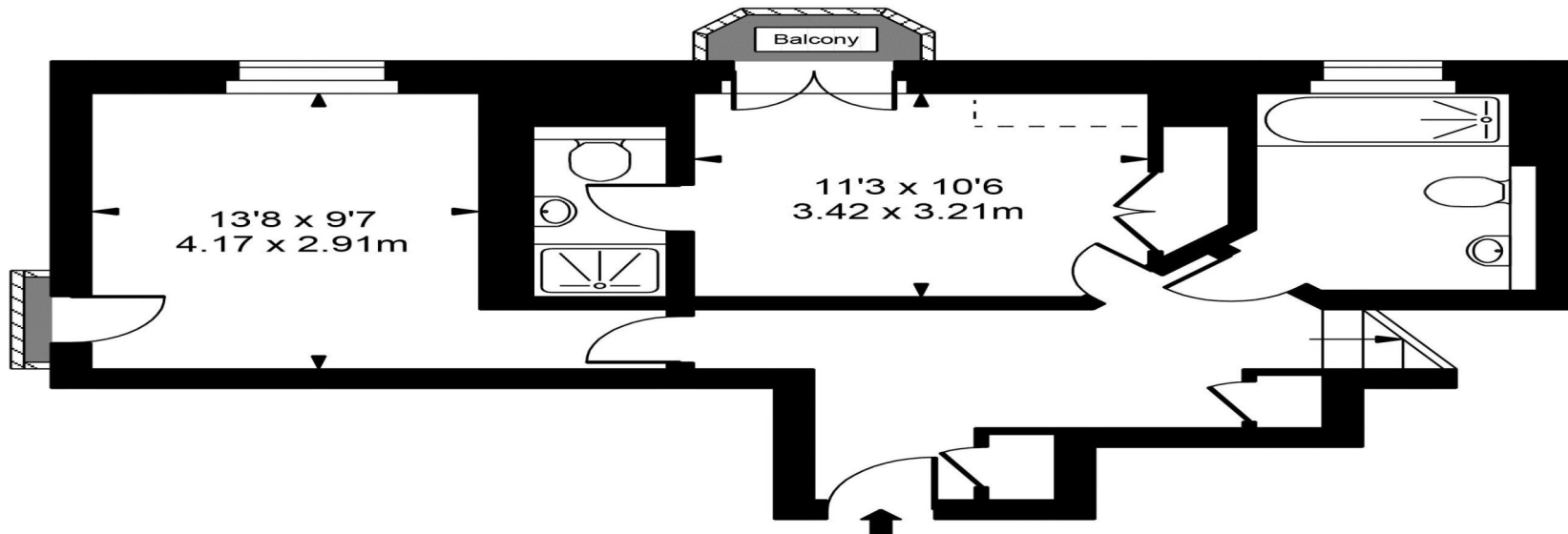
Find us on social media

-  vitaproperties
-  VitaProperties
-  VitaProperties

# Westfield



Fourth Floor



Third Floor



Approx Gross Internal Area **899 Sq Ft - 83.52 Sq M**

For Illustration Purposes Only - Not To Scale  
Floor plan by [www.creativeplanetlk.com](http://www.creativeplanetlk.com)