



Cumberland Mansions, West End Lane, West Hampstead, London, NW6 | £875,000






- Chain free
- Two bathrooms
- Moments to West End Lane
- Share of freehold with a 999 year lease

• 1000 sq ft

"Vita Properties have been tremendously helpful throughout the process of securing/renting my flat. Informative about the property, prompt communication, easy to use dashboard for sharing of information, and pleasant to work with. Highly recommend!"

Set on the second floor of a striking mansion block is this stunning three bedroom, two bathrooms arranged over 1000 sq ft apartment located moments from West End Lane. Offered in good condition, the apartment benefits from a share of freehold, three double bedrooms and chain free.

The property is situated within the heart of West Hampstead and is a stones throw away from the wealth of shops, bars and restaurants along West End Lane

-  Flat
- 
-  x 3
-  x 1
-  x 2



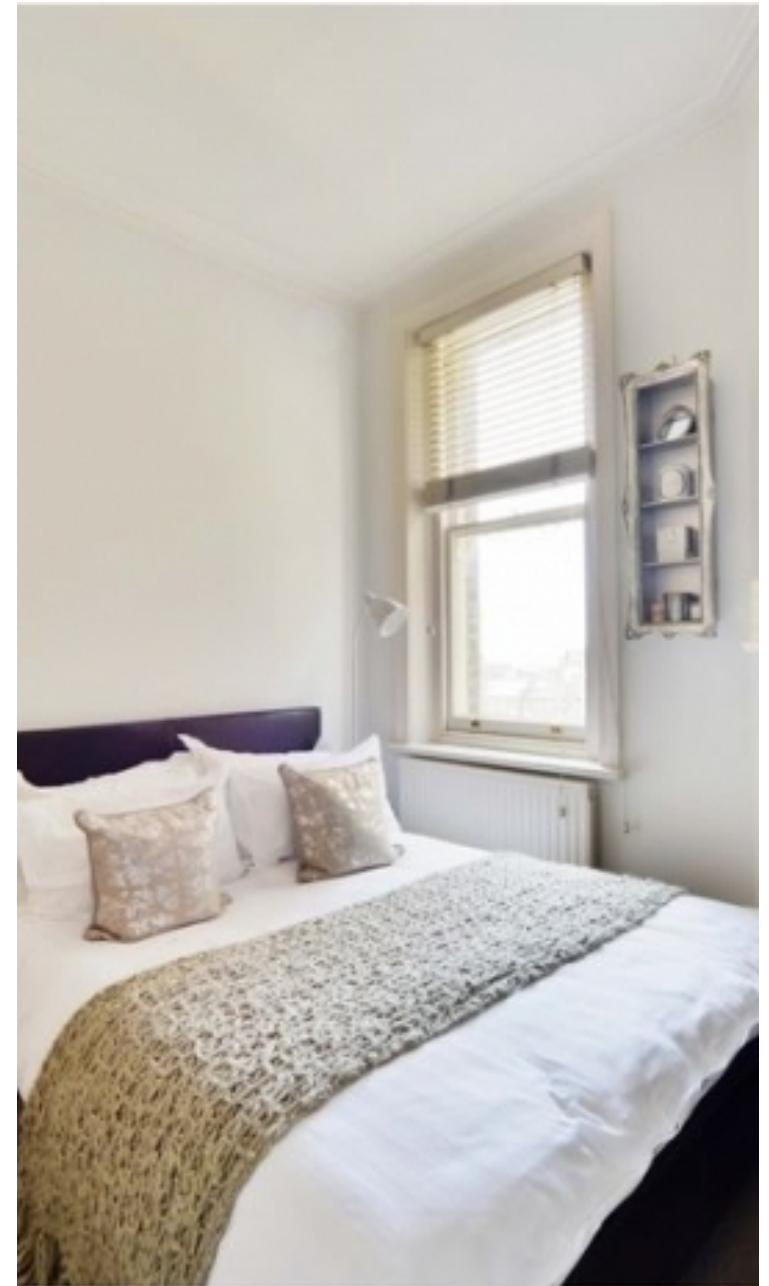
Oliver Kent

 oliver.kent@vitaproperties.uk

 +4477 7274 0351



"I was very impressed with Vita and their network of buyers. When the sale of my flat fell through (twice) they worked extremely hard to find new buyers in a difficult market - thank you!"



"Working with Vita properties has been a smooth experience! No complaints at all. Our letting agent, Diana has been fantastic and very helpful throughout the whole process. I would highly recommend both Vita properties and Diana."



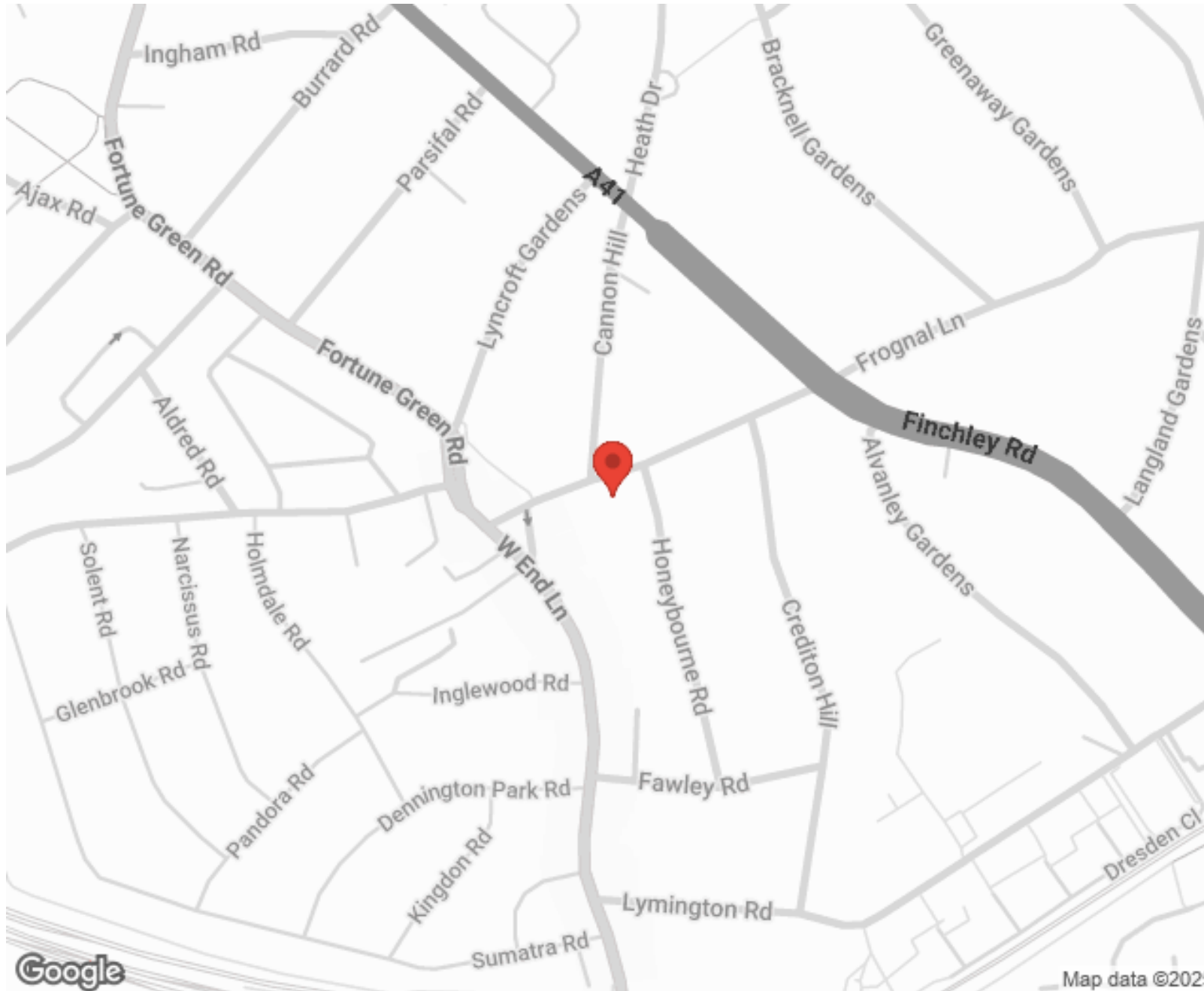
"I used Vita properties to find a flat recently and it was an overall professional, personalised and positive experience. Saira went the extra mile to accommodate to our needs and quick to help us whenever possible."



MORE INFO, PICTURES,
CONTACT ON
OUR WEBSITE



"Vita Properties is a very professional agency. My experience with them was incredible and the entire team was very helpful and kind throughout the renting process. I'd highly recommend!"



SCAN FOR MORE
GOOGLE REVIEWS



Google



4.9 Stars | 132 Reviews

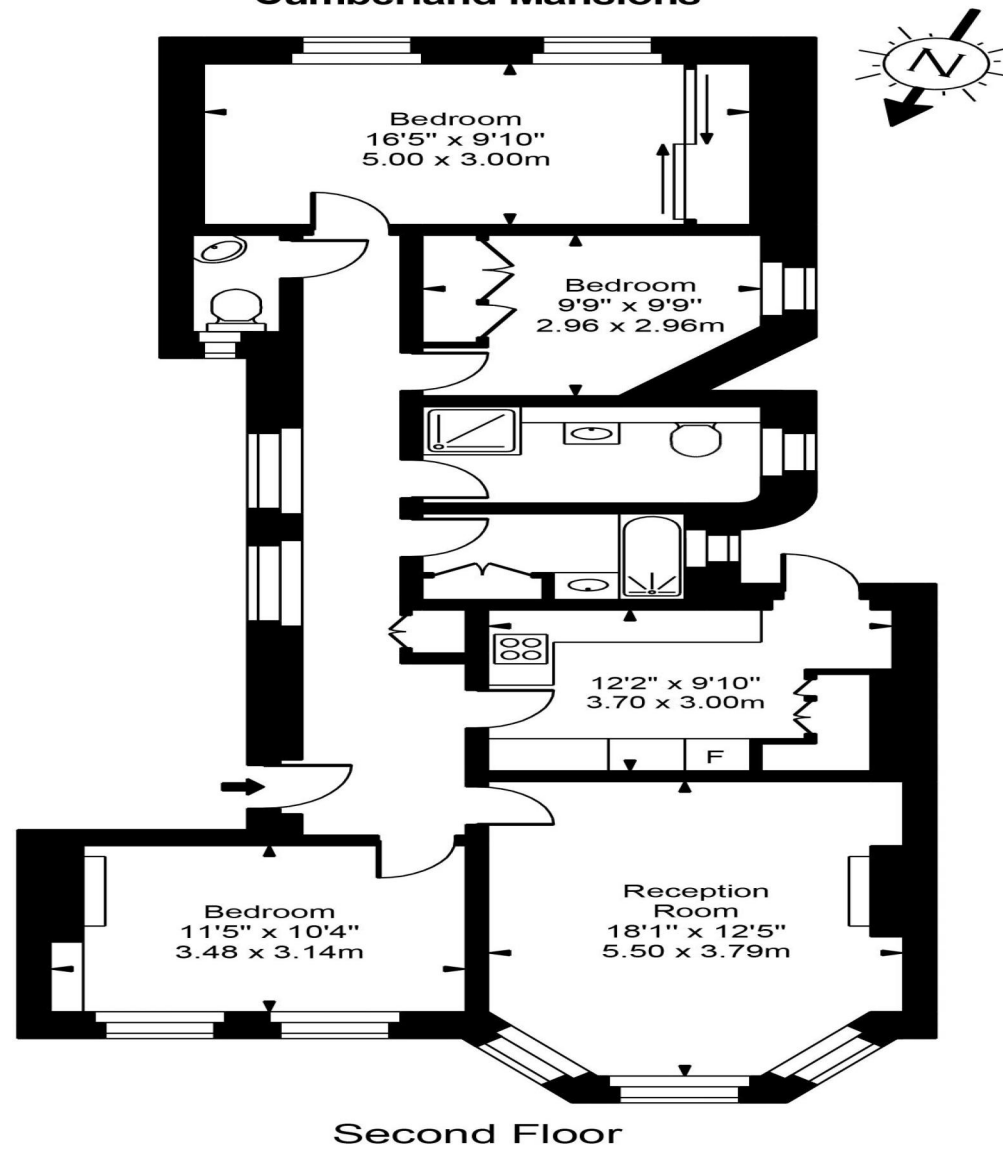
Find us on social media

 vitaproperties

 VitaProperties

 VitaProperties

Cumberland Mansions



Approx Gross Internal Area **1030 Sq Ft - 95.69 Sq M**

For Illustration Purposes Only - Not To Scale
Floor plan by www.creativeplanetlk.com