



## Whittlebury Mews, Dumpton Place, Primrose Hill, London, NW1 .| £1,200

- Available immediately
- Located moments from Primrose Hill park and high street
- Modern and trendy
- Private patio and terrace
- Benefits from all bedrooms having gorgeous en-suites
- A breath-taking standard of design and quality
- \*Old pictures for marketing purposes

"Vita Properties have been tremendously helpful throughout the process of securing/renting my flat. Informative about the property, prompt communication, easy to use dashboard for sharing of information, and pleasant to work with. Highly recommend!"

**\*\* VIDEO VIEWINGS AVAILABLE\*\***

Available immediately for a long let is this exciting newly built townhouse being part of a development of four newly constructed townhouses, located within a secure and gated development, each house offering allocated parking and private courtyard. The houses have been architecturally designed and offers spacious and contemporary living.

Whittlebury Mews is located in the heart of Primrose Hill, located off Gloucester Avenue, close to the shops, cafés and restaurants of Regents Park Road and surrounding areas of Primrose Hill, Regents Park and Camden



Oliver Kent

✉ [oliver.kent@vitaproperties.uk](mailto:oliver.kent@vitaproperties.uk)  
☎ +4477 7274 0351



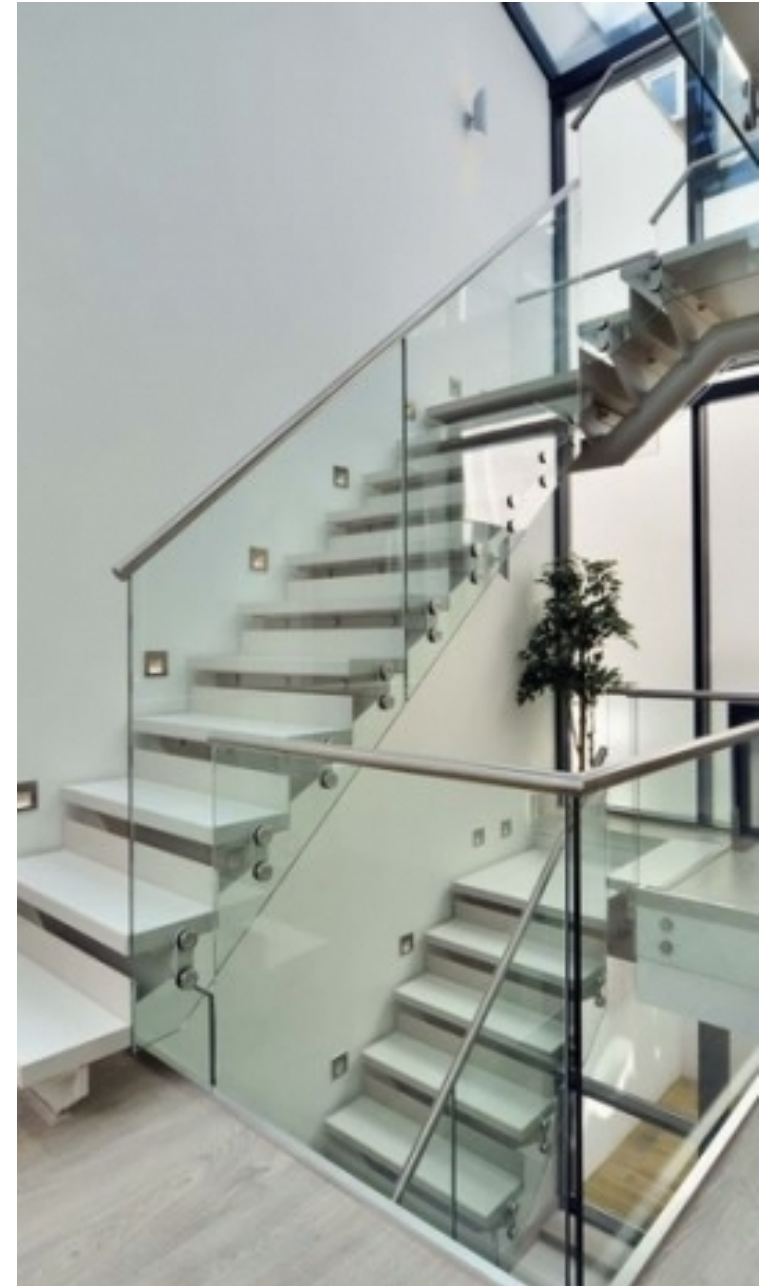
🏠 House  
🔑 Available  
to Let  
🛏 x 3  
🍽 x 3  
🚿 x 3

SCAN FOR  
A VIDEO  
WALKTHROUGH



"I was very impressed with Vita and their network of buyers. When the sale of my flat fell through (twice) they worked extremely hard to find new buyers in a difficult market - thank you!"

---





"Working with Vita properties has been a smooth experience! No complaints at all. Our letting agent, Diana has been fantastic and very helpful throughout the whole process. I would highly recommend both Vita properties and Diana."

---



"I used Vita properties to find a flat recently and it was an overall professional, personalised and positive experience. Saira went the extra mile to accommodate to our needs and quick to help us whenever possible."

---

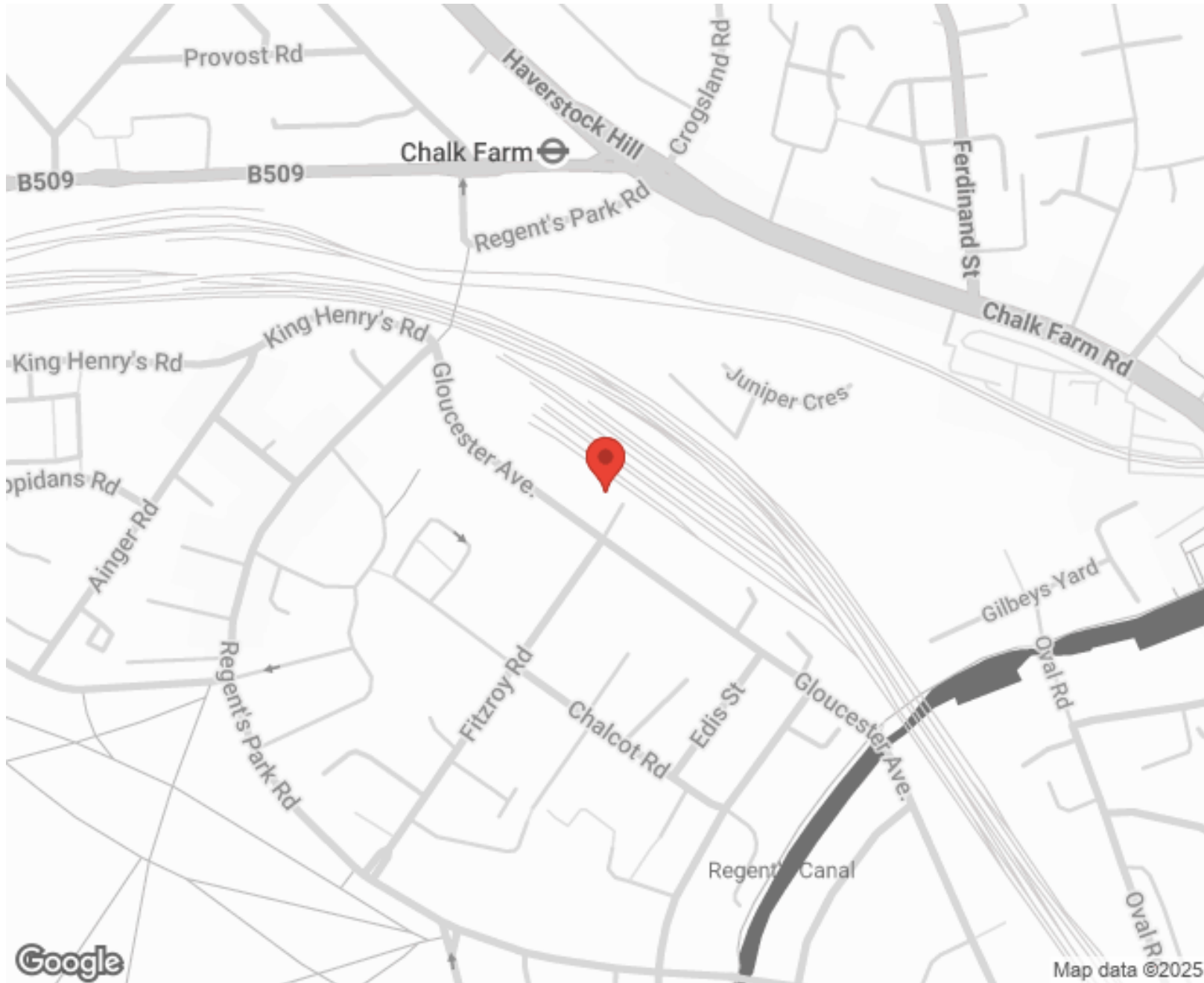


**MORE INFO, PICTURES,  
CONTACT ON  
OUR WEBSITE**



"Vita Properties is a very professional agency. My experience with them was incredible and the entire team was very helpful and kind throughout the renting process. I'd highly recommend!"

---



SCAN FOR MORE  
GOOGLE REVIEWS



Google




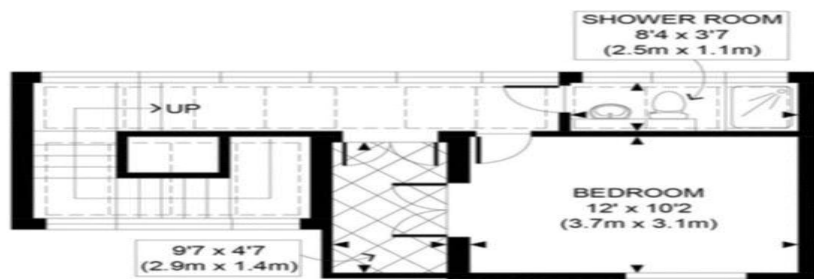
4.9 Stars | 132 Reviews

Find us on social media

 vitaproperties

 VitaProperties

 VitaProperties



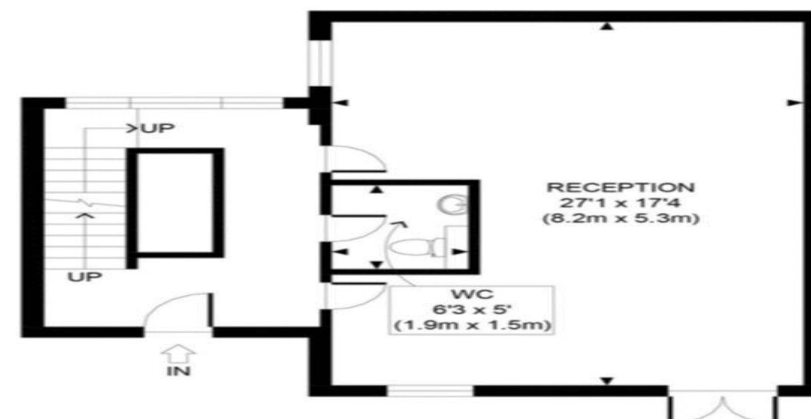
SECOND FLOOR  
GROSS INTERNAL  
FLOOR AREA 293 SQ FT



FIRST FLOOR  
GROSS INTERNAL  
FLOOR AREA 655 SQ FT



BASEMENT  
GROSS INTERNAL  
FLOOR AREA 689 SQ FT



GROUND FLOOR  
GROSS INTERNAL  
FLOOR AREA 639 SQ FT

APPROX. GROSS INTERNAL FLOOR AREA 2276 SQ FT / 211 SQM  
Ref: Copyright **photoplan**

Disclaimer: Floor plan measurements are approximate and are for illustrative purposes only. While we do not doubt the floor plan accuracy and completeness, you or your advisors should conduct a careful, independent investigation of the property in respect of monetary valuation