



Woods Mews, Mayfair, London, W1 .| £1,500

- Two Bed, Two Bath
- A spacious private terrace
- Fully refurbished including new kitchen and bathrooms
- Woods Mews is close to the open spaces of Hyde Park and ideal for access to Marble Arch Underground Station as well as the bus links from Park Lane.
- Council tax - H - £1356 per annum
- Available for Occupation Late March

"Vita Properties have been tremendously helpful throughout the process of securing/renting my flat. Informative about the property, prompt communication, easy to use dashboard for sharing of information, and pleasant to work with. Highly recommend!"

Available late March- A fully refurbished property including brand new kitchen and bathrooms set across the ground and lower ground floor of this stunning building. This 2 bed, 2 bath maisonette apartment of approximately 1,367 square feet is centrally located in a quiet mews within walking distance of Hyde Park and Grosvenor Square. The apartment has been finished to an extremely high quality and boasts solid wood flooring, feature fireplace, high quality appliances and bespoke furniture, patio and terrace. EPC Rating D. Nearest Tube : Marble Arch / Bond Street.

Mayfair is London's most fashionable destination.

With London's finest buildings, largest concentration of luxury hotels, best restaurants, bars, shopping, open spaces and hidden treasures all nestled together in a beautiful village setting



Oliver Kent

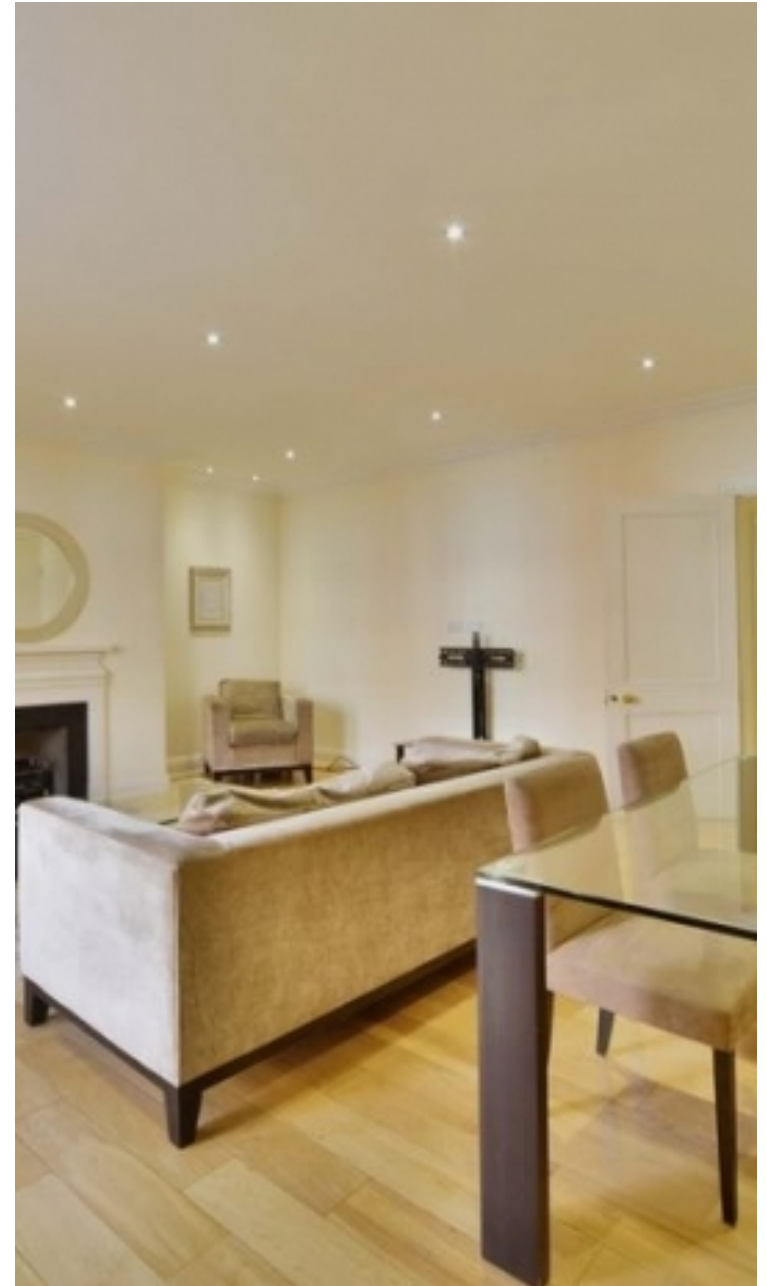
✉ oliver.kent@vitaproperties.uk
☎ +4477 7274 0351



🏠 Flat
🔑 Available
to Let
🛏 x 2
🛋 x 1
🚿 x 2



"I was very impressed with Vita and their network of buyers. When the sale of my flat fell through (twice) they worked extremely hard to find new buyers in a difficult market - thank you!"



"Working with Vita properties has been a smooth experience! No complaints at all. Our letting agent, Diana has been fantastic and very helpful throughout the whole process. I would highly recommend both Vita properties and Diana."



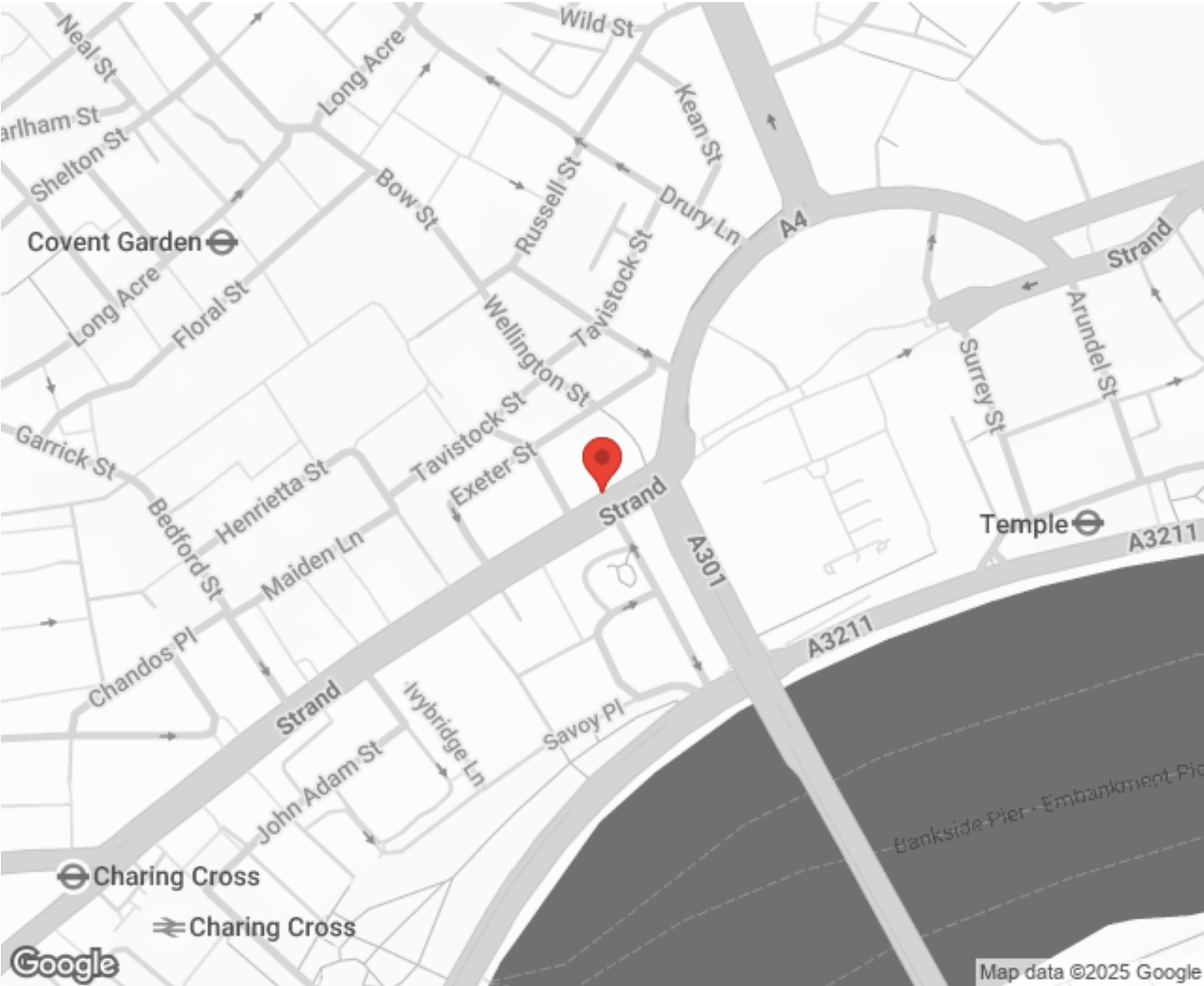
"I used Vita properties to find a flat recently and it was an overall professional, personalised and positive experience. Saira went the extra mile to accommodate to our needs and quick to help us whenever possible."



MORE INFO, PICTURES,
CONTACT ON
OUR WEBSITE



"Vita Properties is a very professional agency. My experience with them was incredible and the entire team was very helpful and kind throughout the renting process. I'd highly recommend!"



Energy Efficiency Rating		Environmental Impact (CO ₂) Rating	
	Potential		Potential
Very energy efficient - lower running costs		Very environmentally friendly - lower CO ₂ emissions	
(92-100) A		(92-100) A	
(81-91) B		(81-91) B	
(69-80) C		(69-80) C	
(55-68) D		(55-68) D	
(39-54) E		(39-54) E	
(21-38) F		(21-38) F	
(1-20) G		(1-20) G	
Not energy efficient - higher running costs		Not environmentally friendly - higher CO ₂ emissions	
England, Scotland & Wales		England, Scotland & Wales	
EU Directive		EU Directive	
68		77	

SCAN FOR MORE
GOOGLE REVIEWS



Google



4.9 Stars | 132 Reviews

Find us on social media



vitaproperties

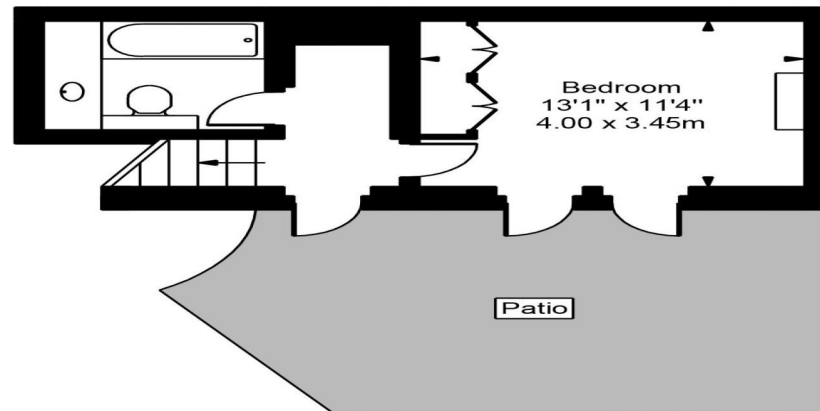
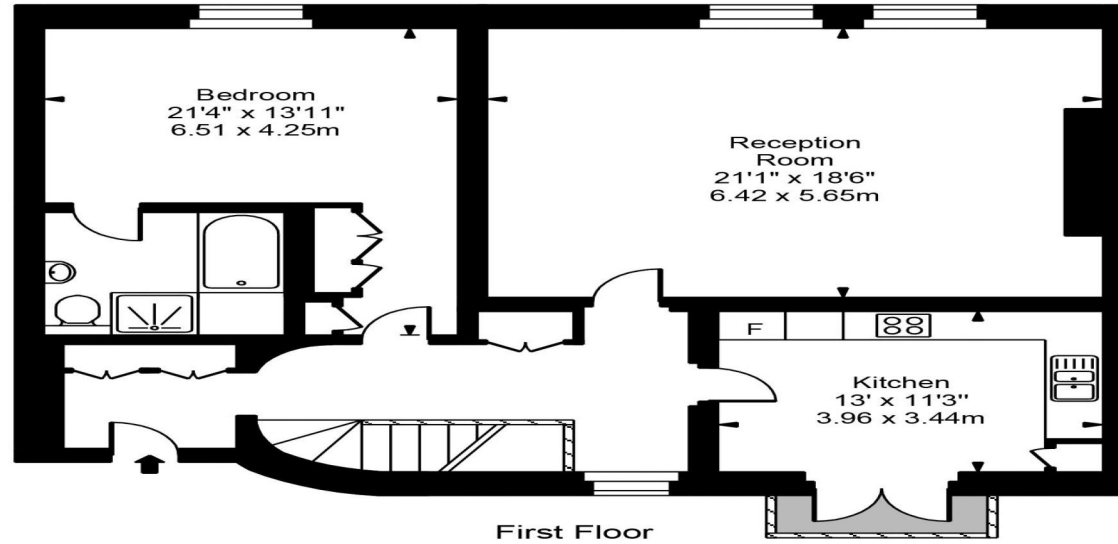
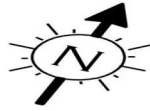


VitaProperties



VitaProperties

Wood Mews



Approx Gross Internal Area **1388 Sq Ft - 128.95 Sq M**

For Illustration Purposes Only - Not To Scale
Floor plan by www.creativeplanetlk.com