



Prince Arthur Mews, Hampstead Village, London NW3 .| £550

- A trendy house in the heart of the village
- Two bathrooms
- Tucked away in a quiet mews
- Wooden floors
- Council tax - F - £1908 per annum
- Small pets allowed

"Vita Properties have been tremendously helpful throughout the process of securing/renting my flat. Informative about the property, prompt communication, easy to use dashboard for sharing of information, and pleasant to work with. Highly recommend!"

Available End of Feb is this trendy two bedroom mews house situated in a private cul-de-sac tucked away moments from the many shops, cafes and restaurants of Hampstead Village. The property boasts a bright reception room with wood flooring and an abundance of natural light, a modern fitted kitchen, a principal bedroom with en-suite bathroom and a second double bedroom with en-suite shower room.

Offered part furnished



Oliver Kent

✉ oliver.kent@vitaproperties.uk
☎ +4477 7274 0351



🏠 House
🔑 Available
to Let
🛏 x 2
🛋 x 1
🚿 x 2

"I was very impressed with Vita and their network of buyers. When the sale of my flat fell through (twice) they worked extremely hard to find new buyers in a difficult market - thank you!"



"Working with Vita properties has been a smooth experience! No complaints at all. Our letting agent, Diana has been fantastic and very helpful throughout the whole process. I would highly recommend both Vita properties and Diana."



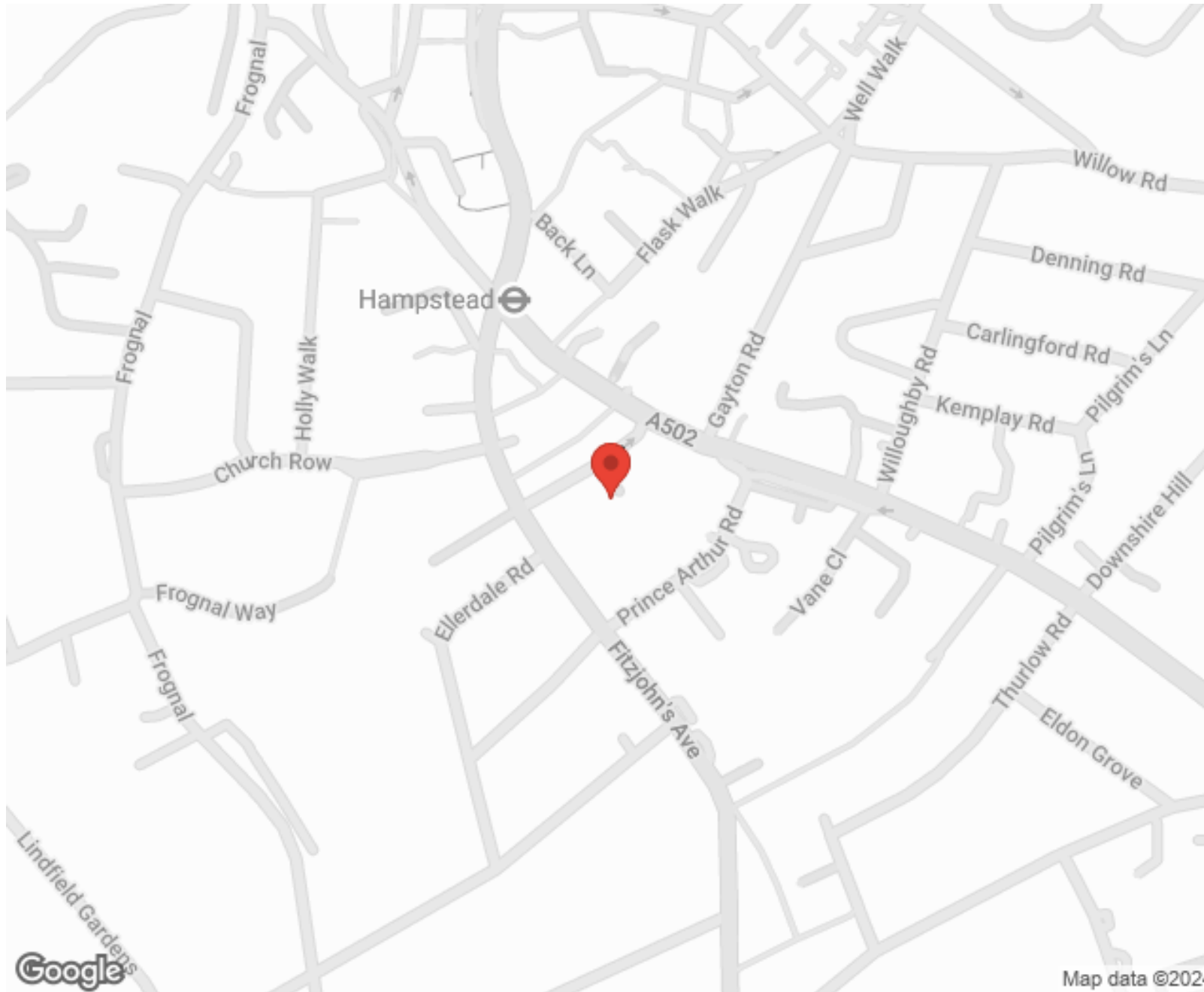
"I used Vita properties to find a flat recently and it was an overall professional, personalised and positive experience. Saira went the extra mile to accommodate to our needs and quick to help us whenever possible."



MORE INFO, PICTURES,
CONTACT ON
OUR WEBSITE



"Vita Properties is a very professional agency. My experience with them was incredible and the entire team was very helpful and kind throughout the renting process. I'd highly recommend!"



SCAN FOR MORE
GOOGLE REVIEWS



Google



4.9 Stars | 132 Reviews

Find us on social media

 vitaproperties

 VitaProperties

 VitaProperties

Prince Arthur Mews, NW3

88 sq m (946 sq ft)

For identification purposes only. Not to scale

© Redinventory 2014.



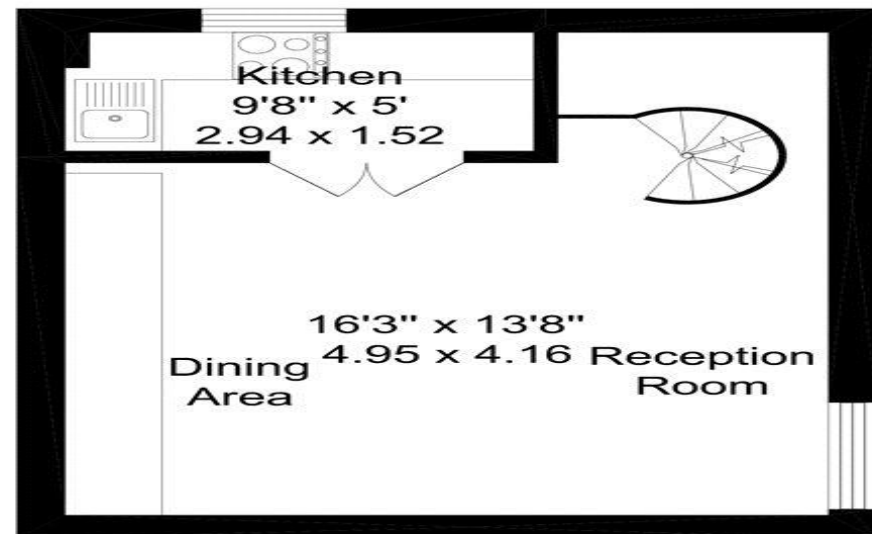
Bedroom
14'1" x 10'1"
4.29 x 3.07

Second Floor



Bedroom
20'4" x 15'9"
6.19 x 4.80

Ground Floor



Kitchen
9'8" x 5'
2.94 x 1.52

16'3" x 13'8"
4.95 x 4.16
Dining Area Reception Room

First Floor