



Latitude House, Oval Road, Primrose Hill, London NW1. | £1,100

- Lift
- Furnished
- Managed
- Moments to Tube

- Close to Regents Park
- Available 22 August 2023

"Vita Properties have been tremendously helpful throughout the process of securing/renting my flat. Informative about the property, prompt communication, easy to use dashboard for sharing of information, and pleasant to work with. Highly recommend!"

Don't miss the opportunity to rent this stylish and contemporary apartment in the highly acclaimed modern development on the edge of Primrose Hill. Available from 02 August 2023, this apartment offers a prime location, just moments away from Regents Park and Camden Lock.

Situated on the first floor and accessible via a lift, this apartment boasts a modern and inviting atmosphere. It features two bedrooms and two bathrooms, including an en-suite for added convenience. The fully fitted kitchen is equipped with all the necessary appliances, making cooking a breeze. The highlight of the apartment is the spacious double reception room, perfect for entertaining guests or simply relaxing after a long day. Step out onto the balcony and enjoy the fresh air while taking in the surrounding views.

This apartment offers a range of desirable features, including wooden floors throughout, underfloor heating for optimal comfort, and intelligent halogen lighting to create the perfect ambiance. The attention to detail and quality finishes make this

The location is a major advantage, with Regents Park and Camden Lock just a stone's throw away. Explore the beauty of Regents Park or immerse yourself in the vibrant atmosphere of Camden Lock, where you can find an array of shops, restaurants, and entertainment options. With excellent transport links nearby, you can easily access other parts of London and beyond.



Viewings for this exceptional apartment are highly recommended. Don't miss out on the chance to experience contemporary living in one of London's most desirable areas. Contact us today to schedule a viewing and secure this fantastic rental opportunity.

 Flat
 Under
Negotiation
 x 2
 x 1
 x 2

SCAN FOR
A VIDEO
WALKTHROUGH



Saira Ishfaq

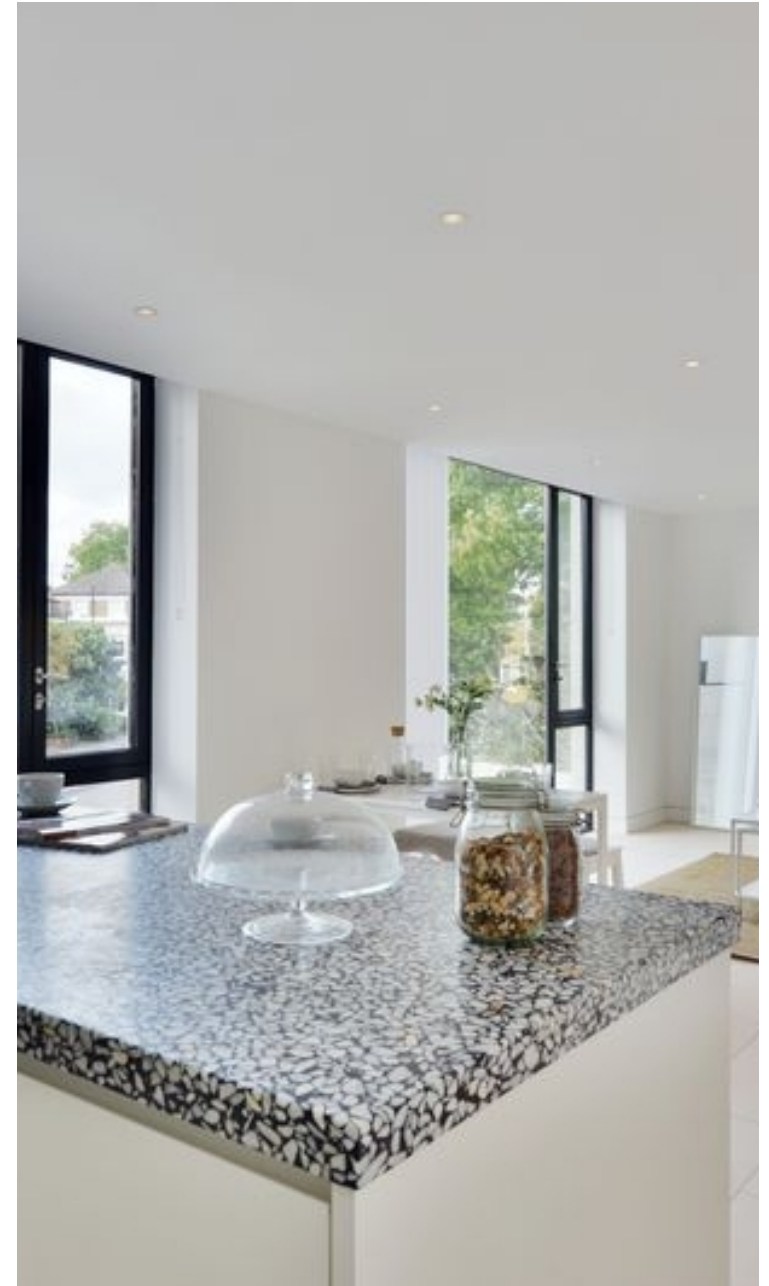
 saira@vitaproperties.uk
 +4475 5575 4510



apartment a truly special place to

call home.

"I was very impressed with Vita and their network of buyers. When the sale of my flat fell through (twice) they worked extremely hard to find new buyers in a difficult market - thank you!"



"Working with Vita properties has been a smooth experience! No complaints at all. Our letting agent, Diana has been fantastic and very helpful throughout the whole process. I would highly recommend both Vita properties and Diana."



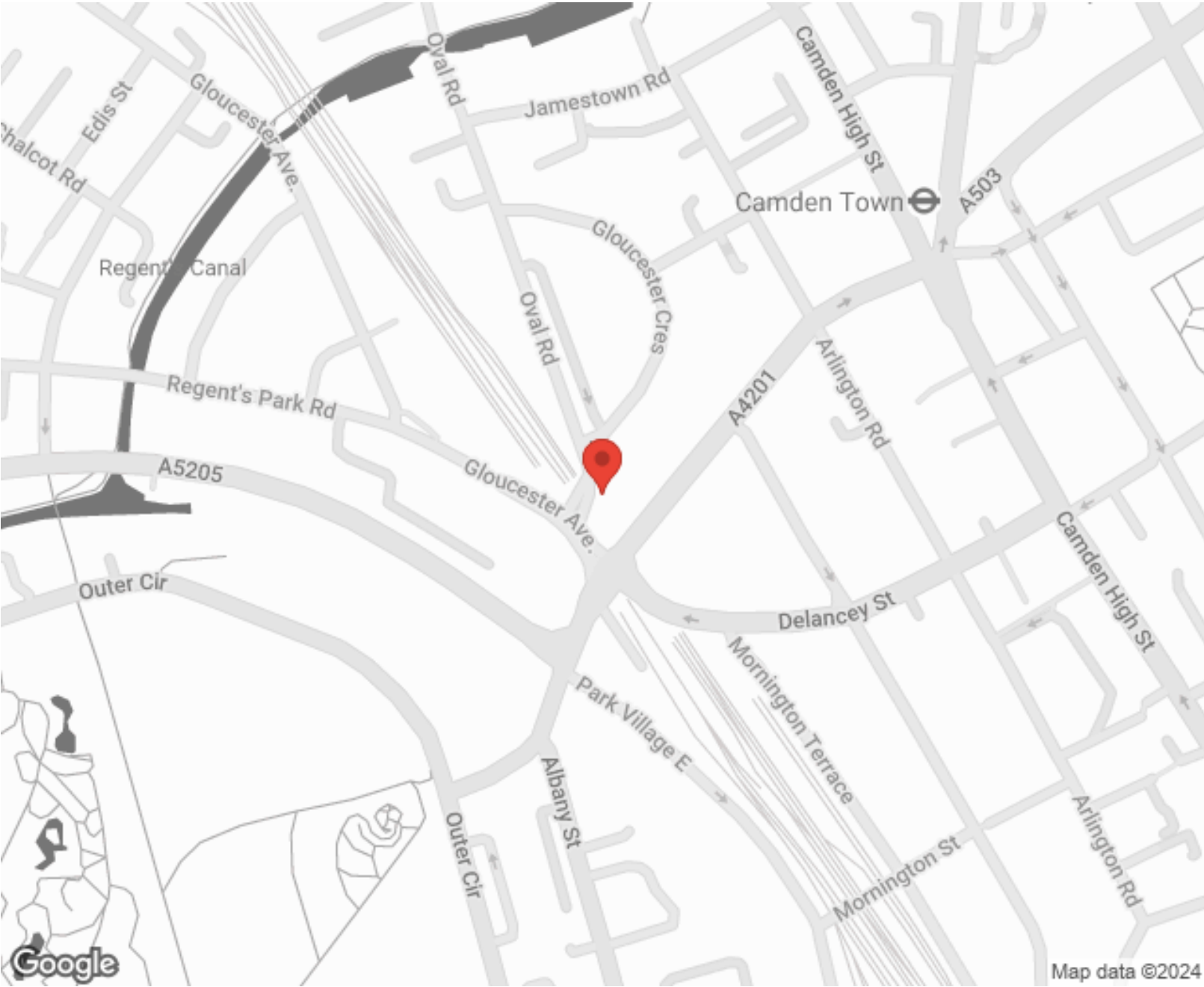
"I used Vita properties to find a flat recently and it was an overall professional, personalised and positive experience. Saira went the extra mile to accommodate to our needs and quick to help us whenever possible."



MORE INFO, PICTURES,
CONTACT ON
OUR WEBSITE



"Vita Properties is a very professional agency. My experience with them was incredible and the entire team was very helpful and kind throughout the renting process. I'd highly recommend!"



Energy Efficiency Rating		Environmental Impact (CO ₂) Rating			
	Current	Potential		Current	Potential
Very energy efficient - lower running costs				Very environmentally friendly - lower CO ₂ emissions	
(92-100) A				(92-100) A	
(81-91) B				(81-91) B	
(69-80) C				(69-80) C	
(55-68) D				(55-68) D	
(39-54) E				(39-54) E	
(21-38) F				(21-38) F	
(1-20) G				(1-20) G	
Not energy efficient - higher running costs				Not environmentally friendly - higher CO ₂ emissions	
England, Scotland & Wales		EU Directive		England, Scotland & Wales	

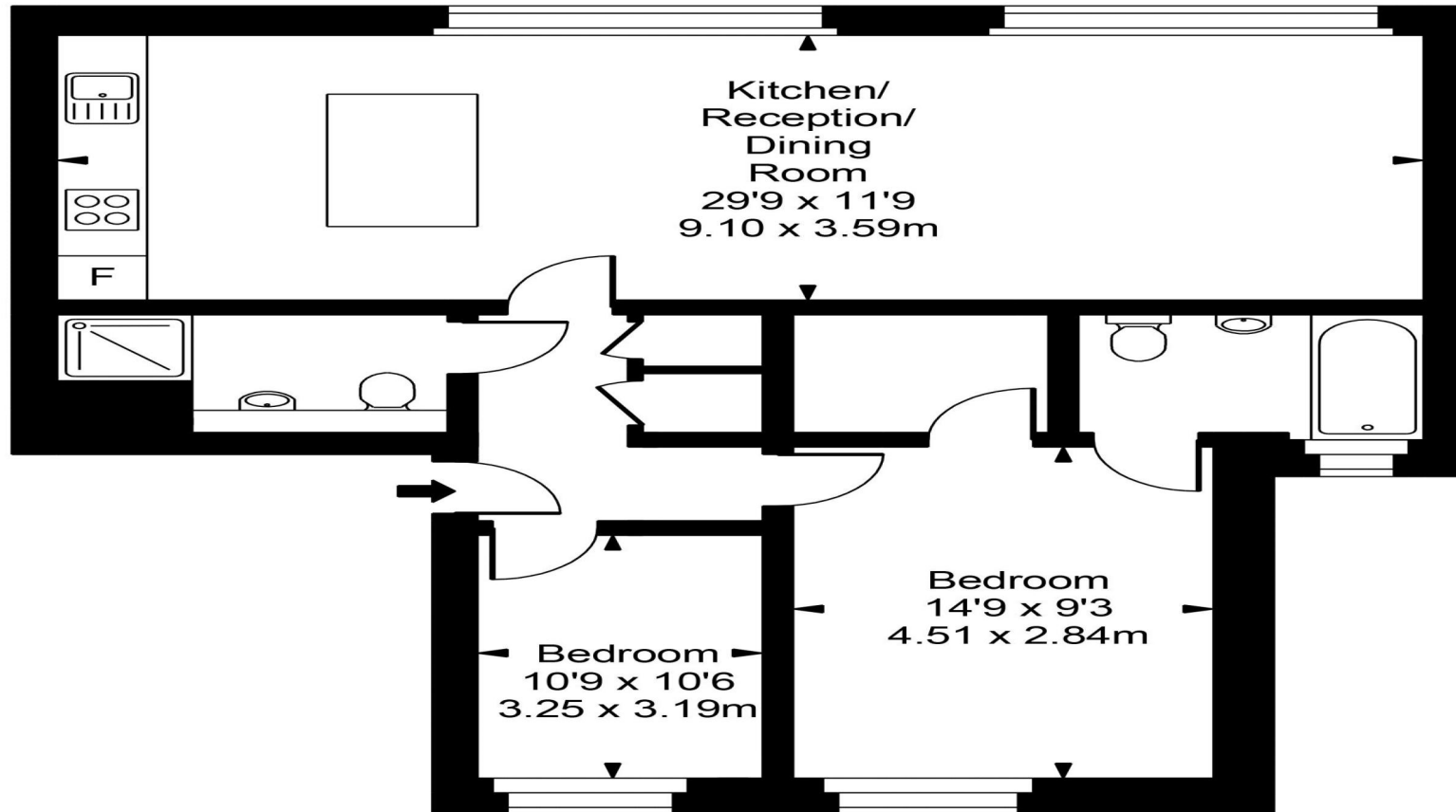
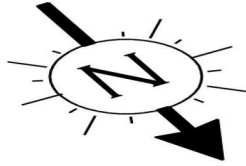
SCAN FOR MORE
GOOGLE REVIEWS

Google
★★★★★
4.9 Stars | 132 Reviews

Find us on social media

vitaproperties
 VitaProperties
 VitaProperties

Latitude House



First Floor



Approx Gross Internal Area **772 Sq Ft - 71.68 Sq M**

FOR ILLUSTRATIVE PURPOSES ONLY. NOT TO SCALE.

Whilst every attempt has been made to ensure the accuracy of the floorplan shown, all measurements, positioning, fixtures, fittings and any other data shown are an approximate interpretation for illustrative purposes only and are not to scale. No responsibility is taken for any error, omission, miss-statement or use of data shown. Floor plan by www.bestangle.co.uk