



Lindfield Gardens, Hampstead, London, NW3 .| £750

- Bright and spacious
- Recently refurbished
- Reception/Dining Room
- Wonderful views of London's skyline
- Close proximity to the transport links of both Hampstead (Northern Line) and Finchley Road (Jubilee & Metropolitan Line) Underground stations
- Available immediately

"Vita Properties have been tremendously helpful throughout the process of securing/renting my flat. Informative about the property, prompt communication, easy to use dashboard for sharing of information, and pleasant to work with. Highly recommend!"

Available immediately is this recently refurbished 3 bedroom property set on the first floor of A period conversion, close to Finchley Road amenities and to Hampstead village. The property has a large bright reception room and a brand new eat-in kitchen. the master bedroom has an en-suite bathroom and there are 2 other large double bedrooms and a family bathroom.





Lindfield Gardens is moments from both, Finchley Road, Hampstead and West Hampstead's transport and amenities



Oliver Kent

✉ oliver.kent@vitaproperties.uk
☎ +4477 7274 0351



 Flat
 Available
to Let
 x 3
 x 1
 x 2



"I was very impressed with Vita and their network of buyers. When the sale of my flat fell through (twice) they worked extremely hard to find new buyers in a difficult market - thank you!"



"Working with Vita properties has been a smooth experience! No complaints at all. Our letting agent, Diana has been fantastic and very helpful throughout the whole process. I would highly recommend both Vita properties and Diana."



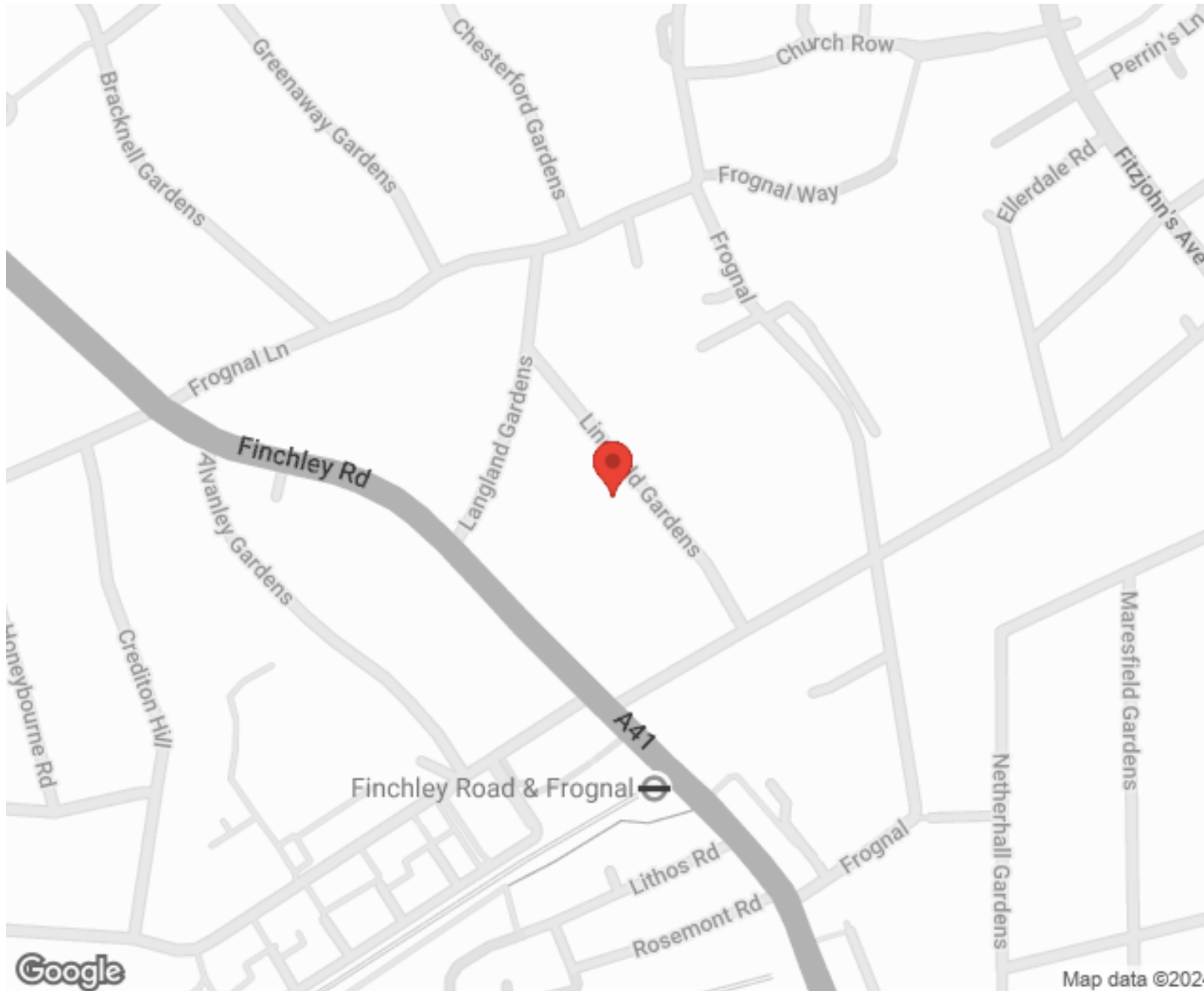
"I used Vita properties to find a flat recently and it was an overall professional, personalised and positive experience. Saira went the extra mile to accommodate to our needs and quick to help us whenever possible."



**MORE INFO, PICTURES,
CONTACT ON
OUR WEBSITE**



"Vita Properties is a very professional agency. My experience with them was incredible and the entire team was very helpful and kind throughout the renting process. I'd highly recommend!"



SCAN FOR MORE
GOOGLE REVIEWS

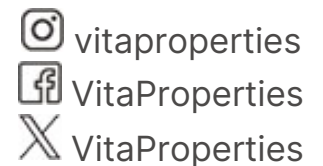


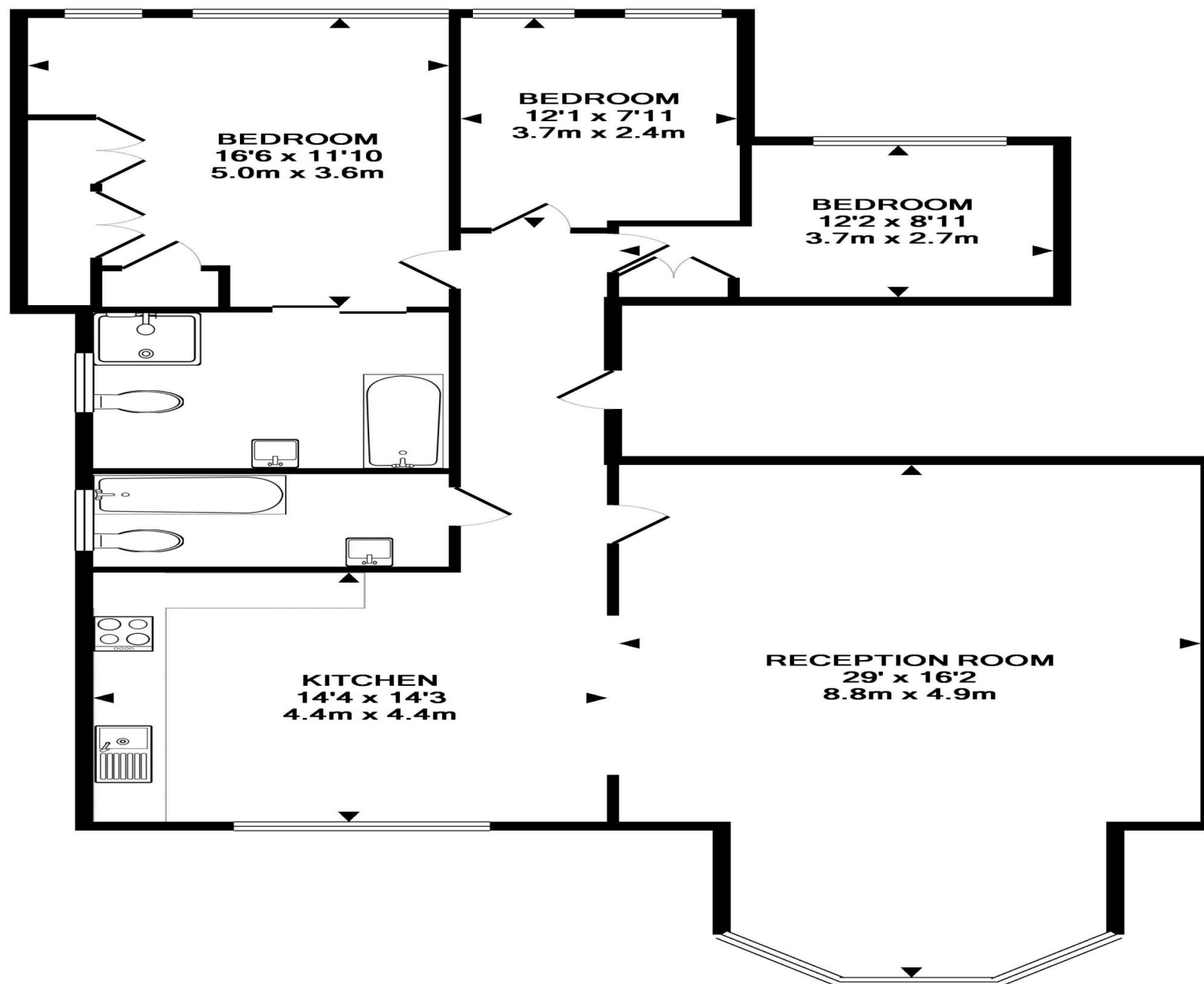
Google



4.9 Stars | 132 Reviews

Find us on social media





TOTAL APPROX. FLOOR AREA 1227 SQ.FT. (114.0 SQ.M.)

Whilst every attempt has been made to ensure the accuracy of the floor plan contained here, measurements of doors, windows, rooms and any other items are approximate and no responsibility is taken for any error, omission, or mis-statement. This plan is for illustrative purposes only and should be used as such by any prospective purchaser. The services, systems and appliances shown have not been tested and no guarantee as to their operability or efficiency can be given