



Hamilton Terrace, St Johns Wood, London, NW8 .| £725

- Reception/Dining Room
- First Floor
- Available NOW
- Mycounciltax.org.uk - G - £1141 per annum

"Vita Properties have been tremendously helpful throughout the process of securing/renting my flat. Informative about the property, prompt communication, easy to use dashboard for sharing of information, and pleasant to work with. Highly recommend!"

AVAILABLE NOW - Situated on a premier road in St John's Wood's is this beautifully furnished apartment on the first floor of a period conversion comprises reception room, fully fitted and equipped kitchen, three bedrooms and two bathrooms (one en suite). The property further benefits from being located close to both Maida Vale and St Johns Wood tube stations.

Offered unfurnished or furnished



Oliver Kent

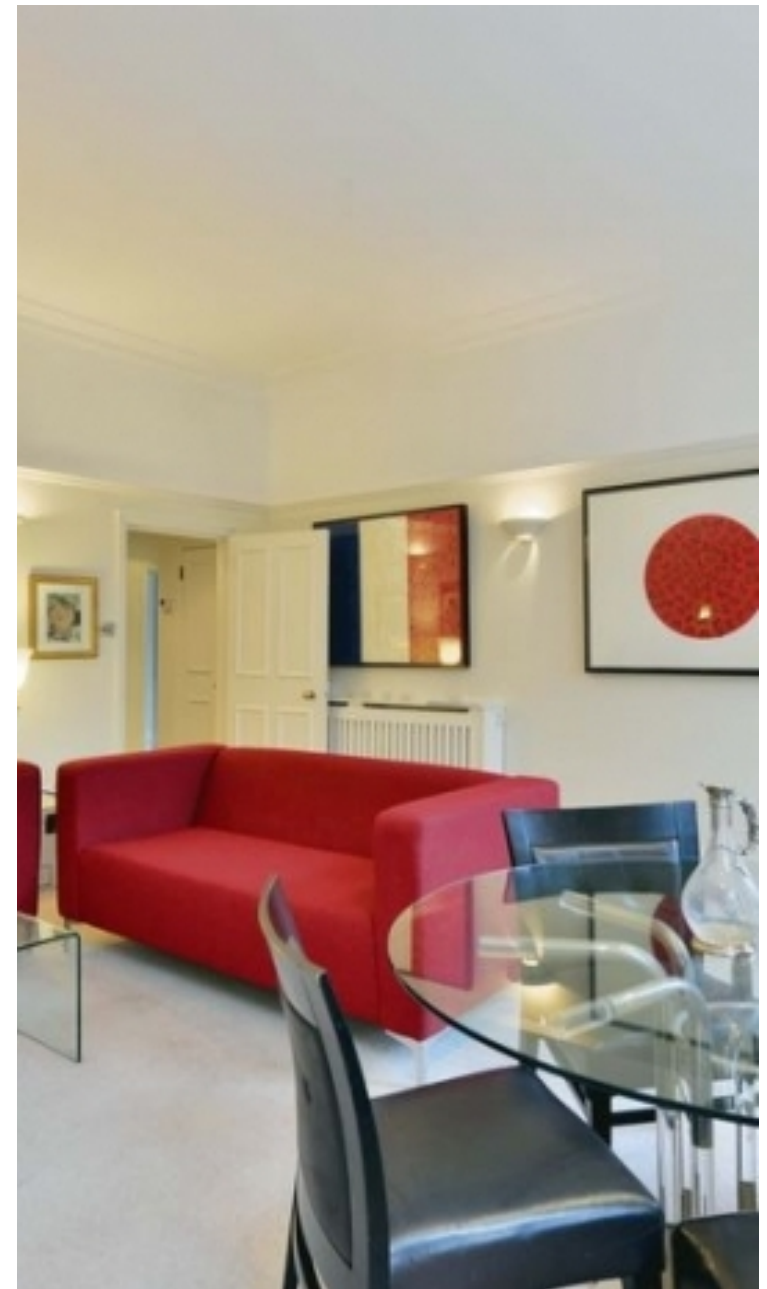
✉ oliver.kent@vitaproperties.uk
☎ +4477 7274 0351



🏠 Flat
🔑 Available
to Let
🛏 x 3
🛋 x 1
🚿 x 2



"I was very impressed with Vita and their network of buyers. When the sale of my flat fell through (twice) they worked extremely hard to find new buyers in a difficult market - thank you!"



"Working with Vita properties has been a smooth experience! No complaints at all. Our letting agent, Diana has been fantastic and very helpful throughout the whole process. I would highly recommend both Vita properties and Diana."



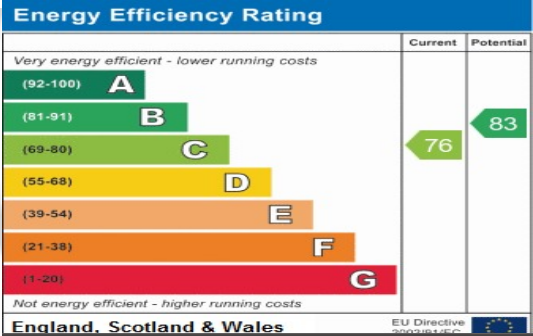
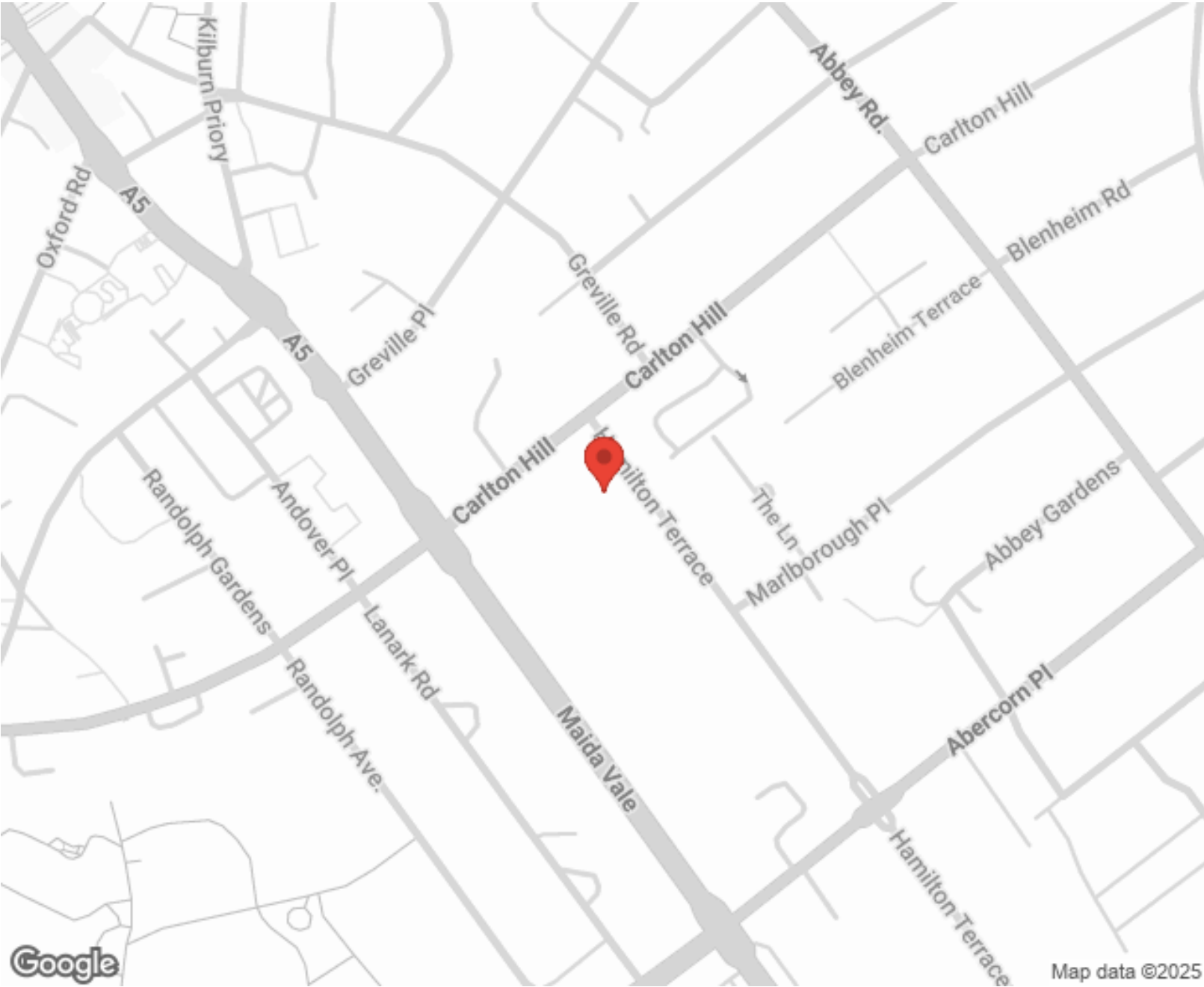
"I used Vita properties to find a flat recently and it was an overall professional, personalised and positive experience. Saira went the extra mile to accommodate to our needs and quick to help us whenever possible."



**MORE INFO, PICTURES,
CONTACT ON
OUR WEBSITE**



"Vita Properties is a very professional agency. My experience with them was incredible and the entire team was very helpful and kind throughout the renting process. I'd highly recommend!"



SCAN FOR MORE
GOOGLE REVIEWS



Google



4.9 Stars | 132 Reviews

Find us on social media



vitaproperties

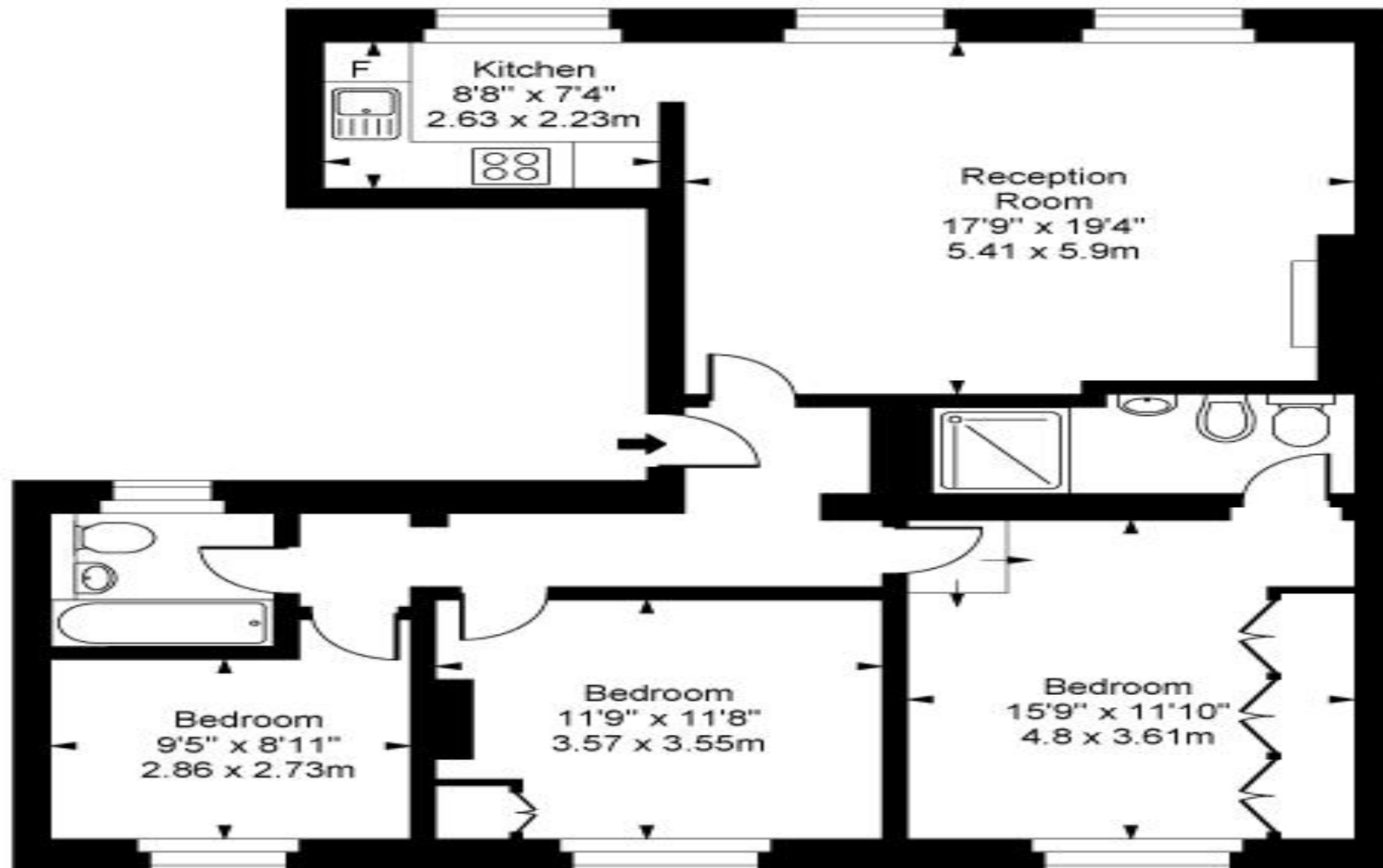


VitaProperties



VitaProperties

Hamilton Terrace



First Floor

Approx Gross Internal Area **1087 Sq Ft - 100.95 Sq M**

For Illustration Purposes Only - Not To Scale
Floor plan by www.creativeplanetlk.com