



South Lodge, Circus Road, St Johns Wood, London NW8 .| £1,675

- Available immediately
- Lift
- Porter
- 3 Bathrooms

- Fantastic Location
- Modern

"Vita Properties have been tremendously helpful throughout the process of securing/renting my flat. Informative about the property, prompt communication, easy to use dashboard for sharing of information, and pleasant to work with. Highly recommend!"

Discover the epitome of modern living with this stunning newly refurbished three-bedroom apartment. Ideally located just off Abbey Road, moments away from the renowned American School and St John's Wood Tube Station, this spacious sixth-floor apartment offers a contemporary and luxurious lifestyle in a popular portered purpose-built block.






Step inside and be captivated by the beauty and elegance of this exceptional residence. Every detail has been carefully considered to create a truly remarkable living space. The apartment boasts a sleek and modern design, showcasing the finest craftsmanship and high-end finishes throughout.

The three bedrooms provide ample space for relaxation and privacy, while the three bathrooms offer convenience and style. With two reception rooms, there is plenty of room to entertain guests or simply unwind after a long day. The fully fitted kitchen is a chef's dream, featuring top-of-the-line appliances and an abundance of storage.

Residents of this prestigious building can enjoy the added benefits of a porter and lift, ensuring a hassle-free living experience. Whether you're hosting a gathering or simply taking in the breathtaking views from the sixth-floor vantage point, this apartment offers the perfect combination of comfort and convenience.

Immediate availability makes this opportunity even more enticing. Whether you're a professional seeking a modern sanctuary or a family in search of a stylish home, this unfurnished apartment can be personalized to your unique taste and preferences.

Don't miss out on the chance to make this remarkable apartment your own.

 Flat
 Available
to Let
 x 3
 x 2
 x 3

SCAN FOR
A VIDEO
WALKTHROUGH



Oliver Kent

 oliver.kent@vitaproperties.uk
 +4477 7274 0351



"I was very impressed with Vita and their network of buyers. When the sale of my flat fell through (twice) they worked extremely hard to find new buyers in a difficult market - thank you!"



"Working with Vita properties has been a smooth experience! No complaints at all. Our letting agent, Diana has been fantastic and very helpful throughout the whole process. I would highly recommend both Vita properties and Diana."



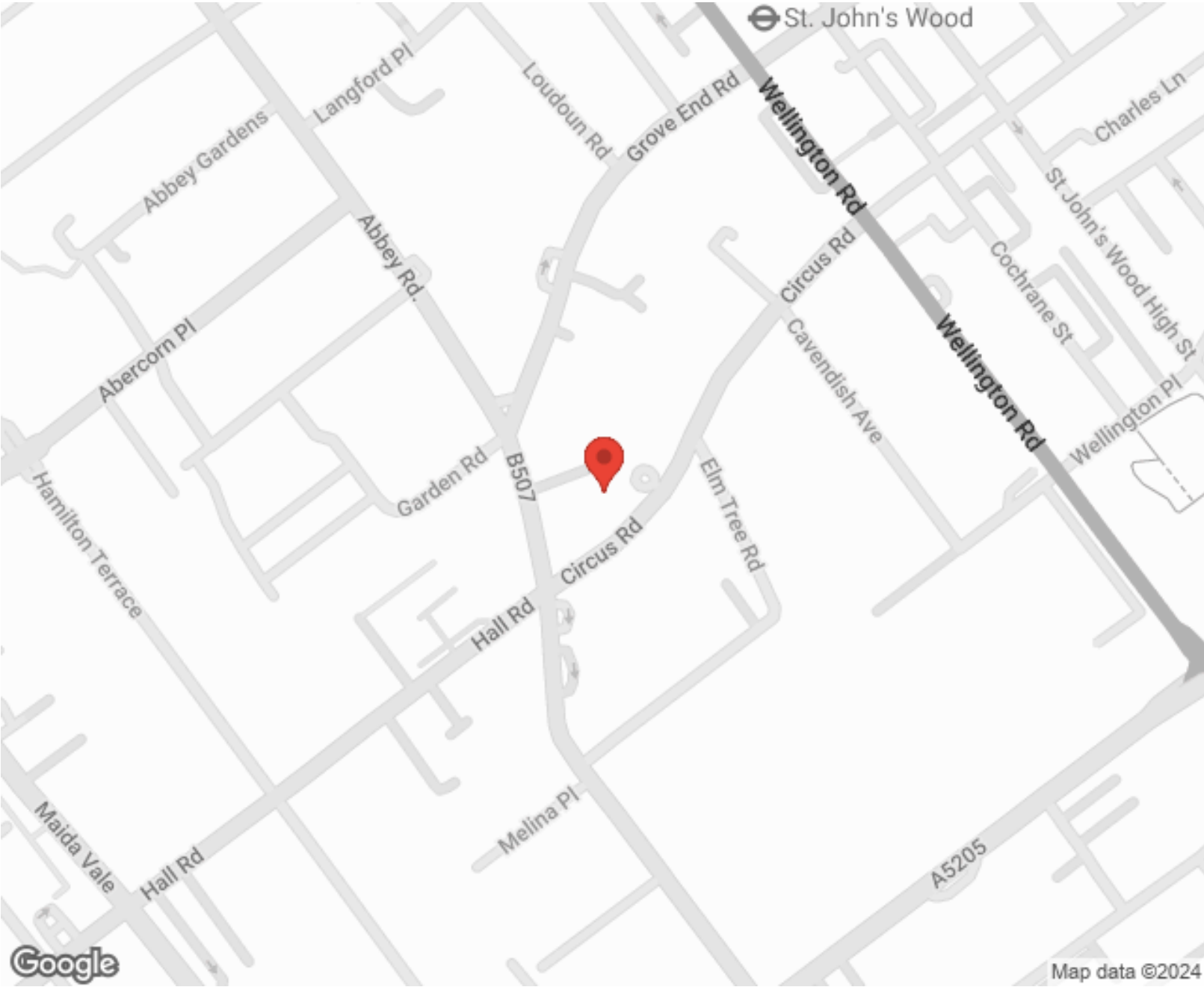
"I used Vita properties to find a flat recently and it was an overall professional, personalised and positive experience. Saira went the extra mile to accommodate to our needs and quick to help us whenever possible."



**MORE INFO, PICTURES,
CONTACT ON
OUR WEBSITE**



"Vita Properties is a very professional agency. My experience with them was incredible and the entire team was very helpful and kind throughout the renting process. I'd highly recommend!"



Energy rating and score

This property's current energy rating is E. It has the potential to be C.
[See how to improve this property's energy efficiency.](#)

Score	Energy rating	Current	Potential
92+	A		
81-91	B		
69-80	C		77 C
55-68	D		
39-54	E	43 E	
21-38	F		
1-20	G		

The graph shows this property's current and potential energy rating.




Properties get a rating from A (best) to G (worst) and a score. The better the rating and score, the lower your energy bills are likely to be.

SCAN FOR MORE
GOOGLE REVIEWS



Google
★★★★★
4.9 Stars | 132 Reviews

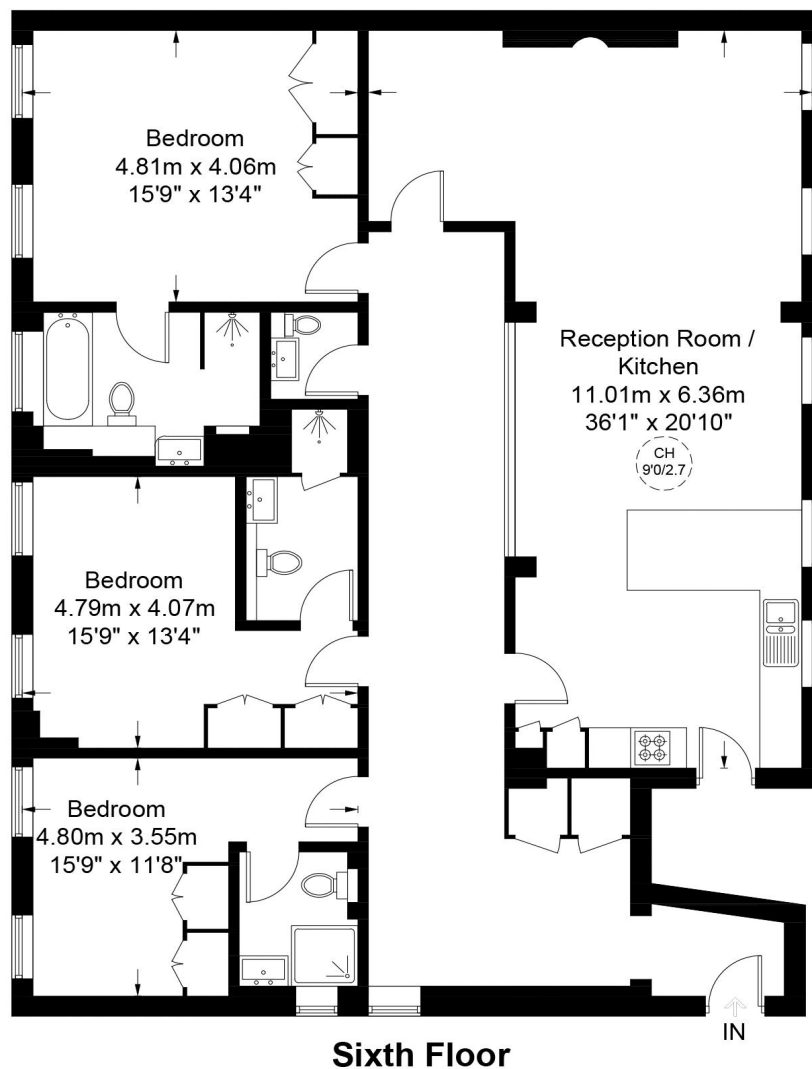
Find us on social media

-  vitaproperties
-  VitaProperties
-  VitaProperties



South Lodge Circus Road, NW8

Approximate Gross Internal Area = 1638 sq ft / 152.2 sq m



**Certified
Property
Measurer**

This plan is for layout guidance only. Not drawn to scale unless stated. Windows and door openings are approximate. Whilst every care is taken in the preparation of this plan, please check all dimensions, shapes and compass bearings before making any decisions reliant upon them. (ID975220)