



Brunswick Place, Marylebone, London, NW1 | £2,950

- Superb location on the edge of the park
- Spacious accomadation split over three floors
- Five Bedrooms
- Garage
- Four Bathrooms
- 3000 sq ft
- Available immediately

"Vita Properties have been tremendously helpful throughout the process of securing/renting my flat. Informative about the property, prompt communication, easy to use dashboard for sharing of information, and pleasant to work with. Highly recommend!"

Brunswick Place is situated just off the Outer Circle in Regents Park and is approximately half a mile from Oxford Street. The closest underground stations are Regents Park Bakerloo Line (approximately 300 yards) and Baker Street Jubilee, Bakerloo, Metropolitan, City & Hammersmith and Circle Lines (0.3 miles) : Description : An elegant home arranged over three floors and including a lock up garage. This spacious property (approximately 277.4 sq m/2,986 sq f) offers period style charm coupled with contemporary kitchen and bathrooms in a great location adjacent to Regents Park and within 250 yards of fashionable Marylebone High Street. Benefits include access to a private garden square with a summer tennis court and children's playground (subscription cost applies). The accommodation comprises a principle bedroom with en-suite bathroom, four further bedrooms, family bathroom, en-suite shower room, guest cloakroom, reception room, dining room with study area, family room, kitchen/breakfast room, separate utility room, and a good sized integral garage.

 House

 Available to Let

 x 5+

 x 3

 x 4



Oliver Kent

 oliver.kent@vitaproperties.uk

 +4477 7274 0351



"I was very impressed with Vita and their network of buyers. When the sale of my flat fell through (twice) they worked extremely hard to find new buyers in a difficult market - thank you!"



"Working with Vita properties has been a smooth experience! No complaints at all. Our letting agent, Diana has been fantastic and very helpful throughout the whole process. I would highly recommend both Vita properties and Diana."



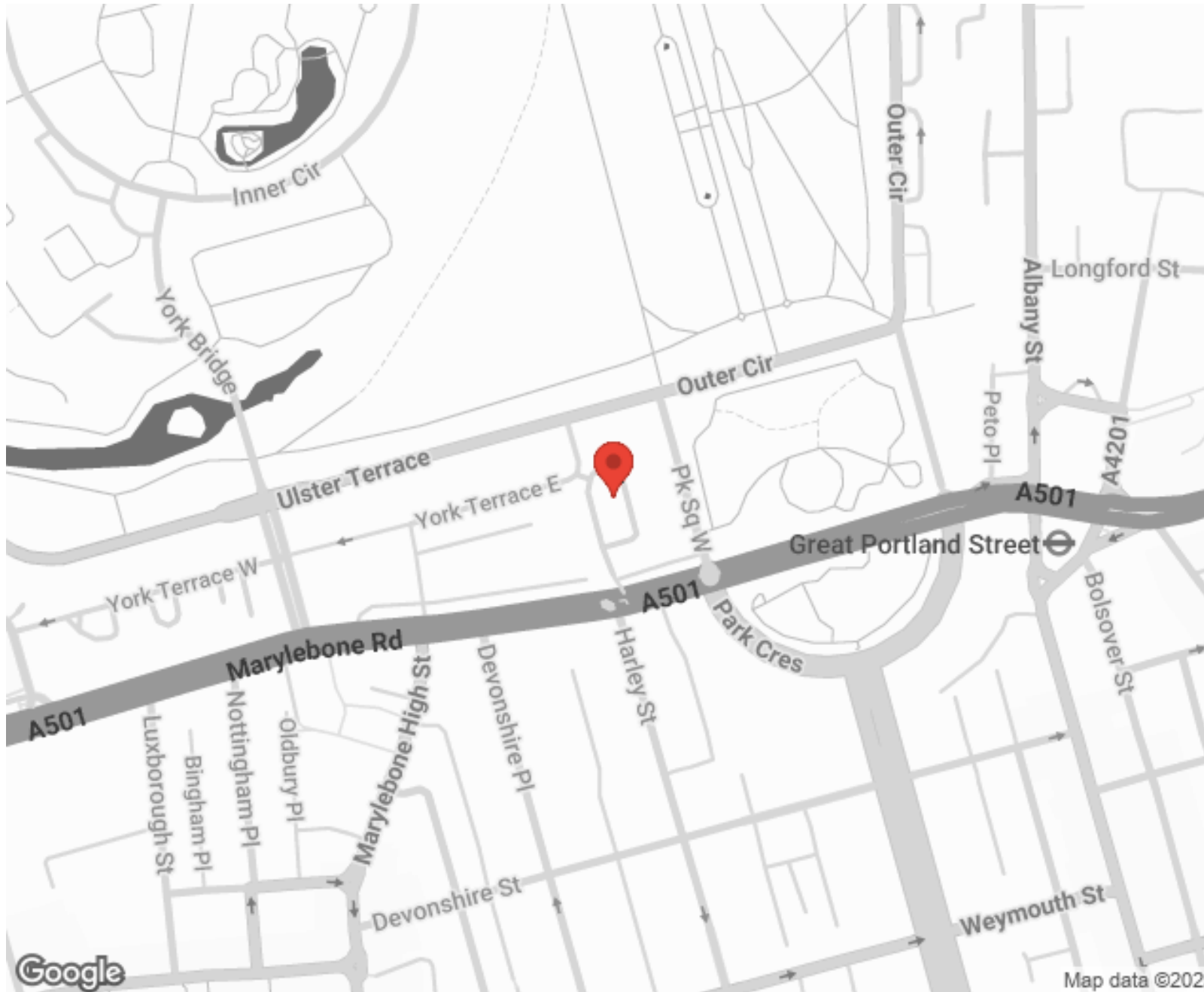
"I used Vita properties to find a flat recently and it was an overall professional, personalised and positive experience. Saira went the extra mile to accommodate to our needs and quick to help us whenever possible."



MORE INFO, PICTURES,
CONTACT ON
OUR WEBSITE



"Vita Properties is a very professional agency. My experience with them was incredible and the entire team was very helpful and kind throughout the renting process. I'd highly recommend!"



SCAN FOR MORE
GOOGLE REVIEWS



Google



4.9 Stars | 132 Reviews

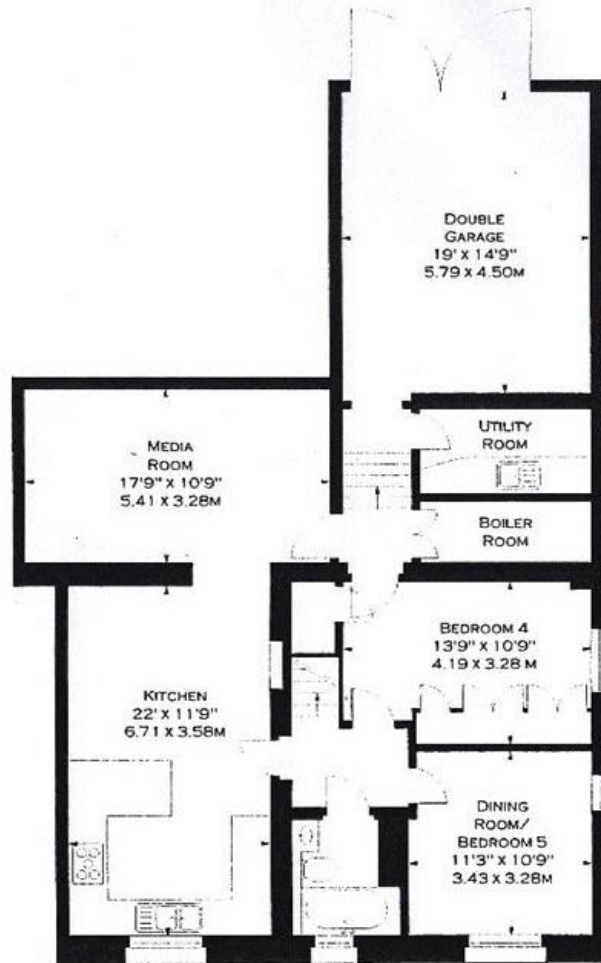
Find us on social media

 vitaproperties

 VitaProperties

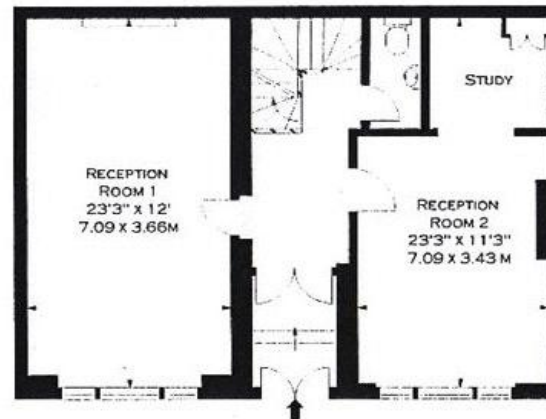
 VitaProperties

APPROX. GROSS INTERNAL AREA *
2986 FT² - 277.40 M²



COURTYARD
WITH ACCESS TO
2 VAULTS

LOWER GROUND FLOOR



GROUND FLOOR



FIRST FLOOR

ILLUSTRATION FOR IDENTIFICATION PURPOSES ONLY. NOT TO SCALE
* AS DEFINED BY RICS - CODE OF MEASURING PRACTICE