



Loudoun Road, St Johns Wood, London, NW8 .| £620

- 
- Available 15 August 2023
  - Modern
  - Lift
  - Balcony
  - Managed
  - Offered furnished or unfurnished

"Vita Properties have been tremendously helpful throughout the process of securing/renting my flat. Informative about the property, prompt communication, easy to use dashboard for sharing of information, and pleasant to work with. Highly recommend!"

Available 15 August 2023 - A stunning two double bedroom flat in a contemporary new build.

The flat comprises a bright reception room open plan to a modern high gloss kitchen, two large double bedroom (one with en suite shower room), luxury bathroom with under floor heating, solid wood floors and lift access. The property is offered furnished or unfurnished. The flat further benefits from a large balcony offering panoramic views.

The property is ideally located close to Swiss Cottage (Jubilee Line - Zone 2), South Hampstead (National Rail), St Johns Wood (Jubilee Line - Zone 2), Primrose Hill and all other local amenities



Oliver Kent

✉ [oliver.kent@vitaproperties.uk](mailto:oliver.kent@vitaproperties.uk)  
☎ +4477 7274 0351



🏠 Flat  
🔑 Available  
to Let  
🛏 x 2  
🛏 x 1  
🛏 x 2



"I was very impressed with Vita and their network of buyers. When the sale of my flat fell through (twice) they worked extremely hard to find new buyers in a difficult market - thank you!"

---





"Working with Vita properties has been a smooth experience! No complaints at all. Our letting agent, Diana has been fantastic and very helpful throughout the whole process. I would highly recommend both Vita properties and Diana."

---



"I used Vita properties to find a flat recently and it was an overall professional, personalised and positive experience. Saira went the extra mile to accommodate to our needs and quick to help us whenever possible."

---

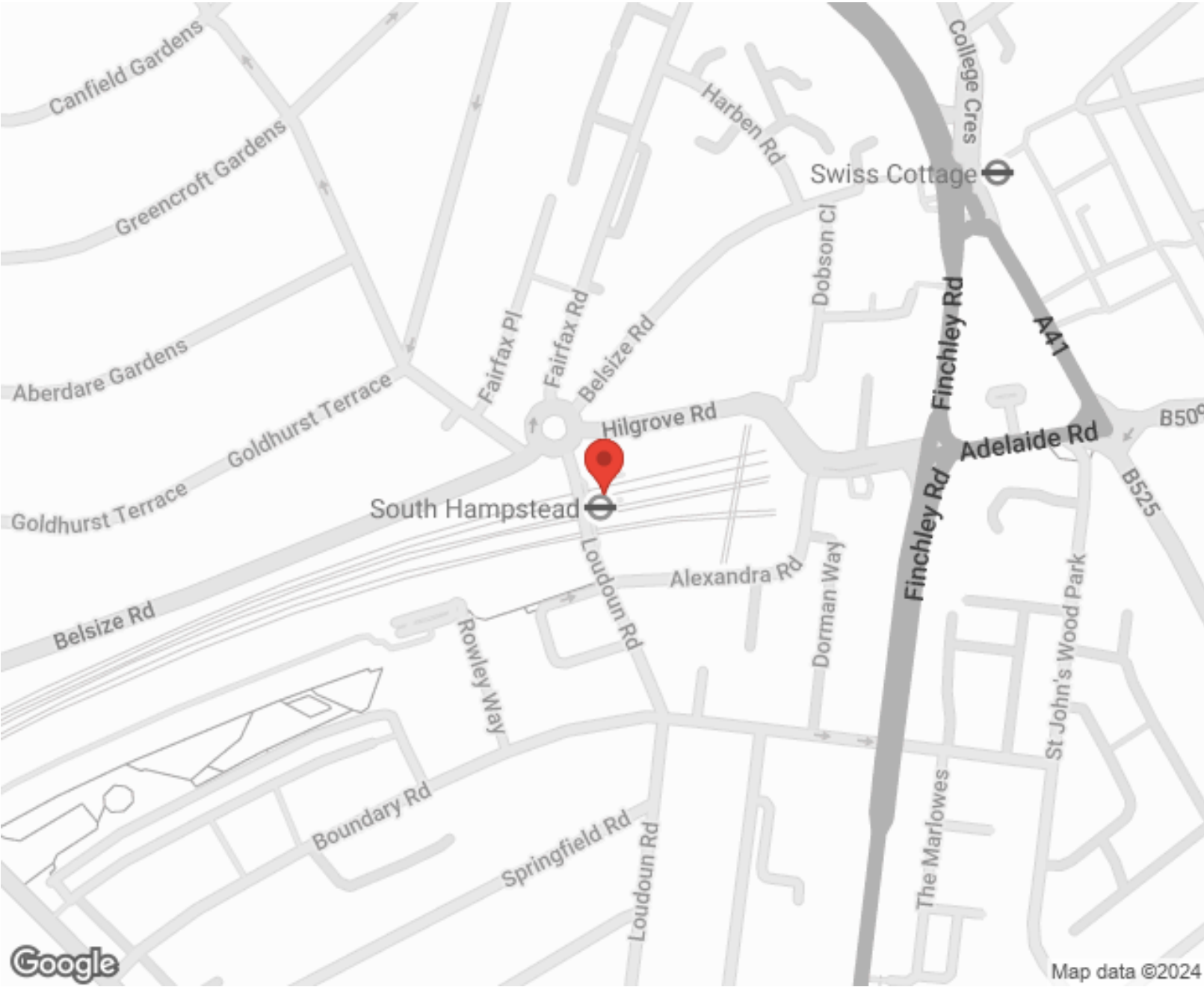


MORE INFO, PICTURES,  
CONTACT ON  
OUR WEBSITE





"Vita Properties is a very professional agency. My experience with them was incredible and the entire team was very helpful and kind throughout the renting process. I'd highly recommend!"



Score	Energy rating	Current	Potential
92+	A		
81-91	B		
69-80	C	78 C	78 C
55-68	D		
39-54	E		
21-38	F		
1-20	G		

SCAN FOR MORE  
GOOGLE REVIEWS

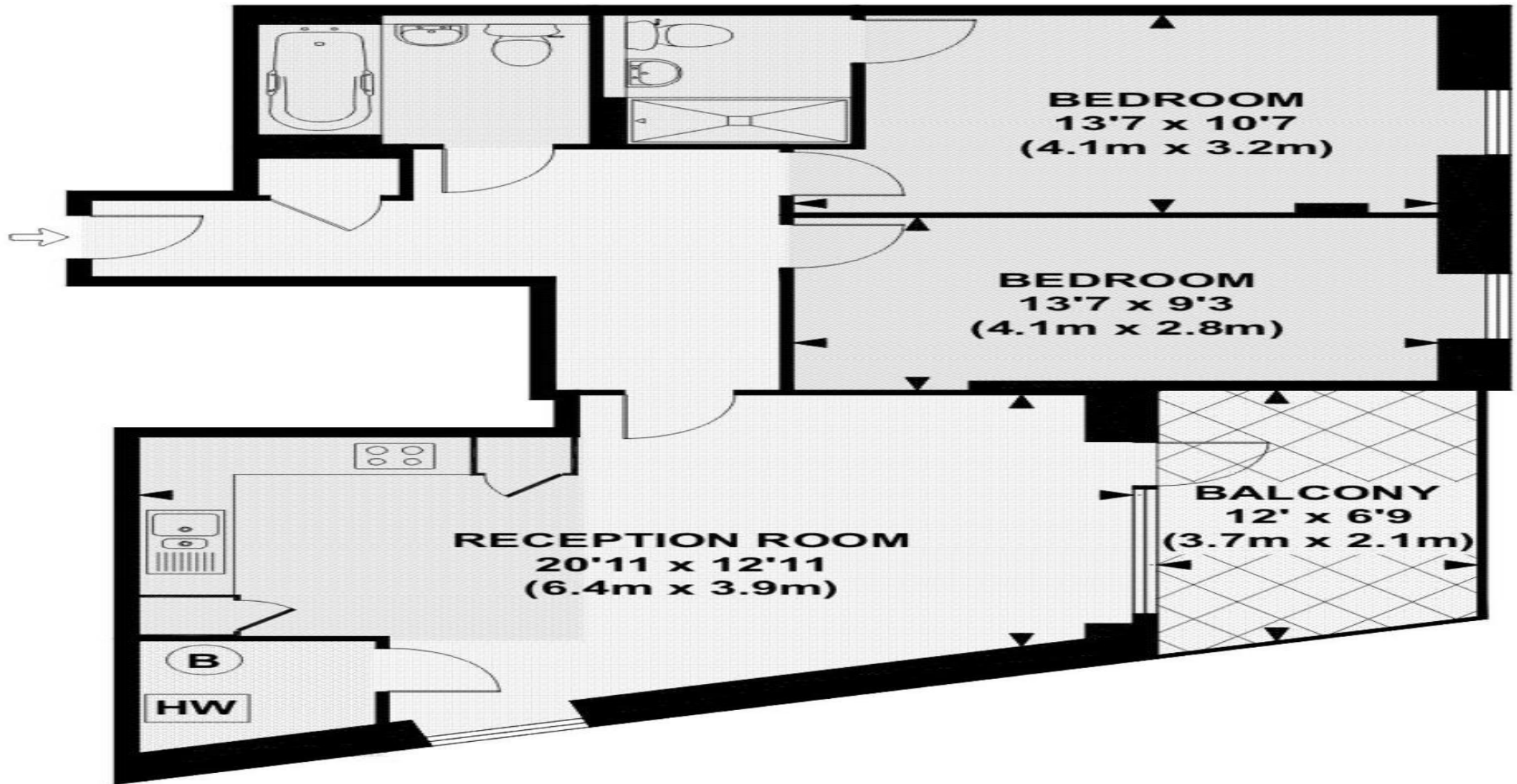
Google  
★★★★★  
4.9 Stars | 132 Reviews

Find us on social media

vitaproperties

VitaProperties

VitaProperties



### SEVENTH FLOOR

**APPROX. GROSS INTERNAL FLOOR AREA 792 SQ FT / 73 SQ M**

This floorplan is for illustration purposes and may not truly reflect design or dimensions and should not be used for valuation or condition purposes .