



Belsize Park Gardens, Belsize Park, London, NW3 .| £875

- Available immediately
- Appox 1657 sq ft
- Newly refurbished
- Private garden

- Seconds to Belsize Village and tube
- Modern
- Wooden floors
- Council tax - G - £2208 per annum

"Vita Properties have been tremendously helpful throughout the process of securing/renting my flat. Informative about the property, prompt communication, easy to use dashboard for sharing of information, and pleasant to work with. Highly recommend!"

Vita are delighted to offer this is a spectacular garden flat in a highly sought after road in Belsize Park. The property is located on garden level and is spread over 160 square meters. It has been extensively refurbished to extremely high standard. There are solid oak floors throughout and acres of storage. There are two double bedrooms, both huge and both opening via French doors onto the garden. The reception room is at the front of the property and opens via French doors onto the walled patio garden. The kitchen has also been completely renovated with its stylish red gloss units and stainless steel appliances, including a stunning gas, range cooker. There is a family bathroom, a shower room and a guest WC. Further benefits a secluded front patio and a private, stunning mature rear garden.

Offered furnished or unfurnished and available immediately (with a weeks notice)



Oliver Kent

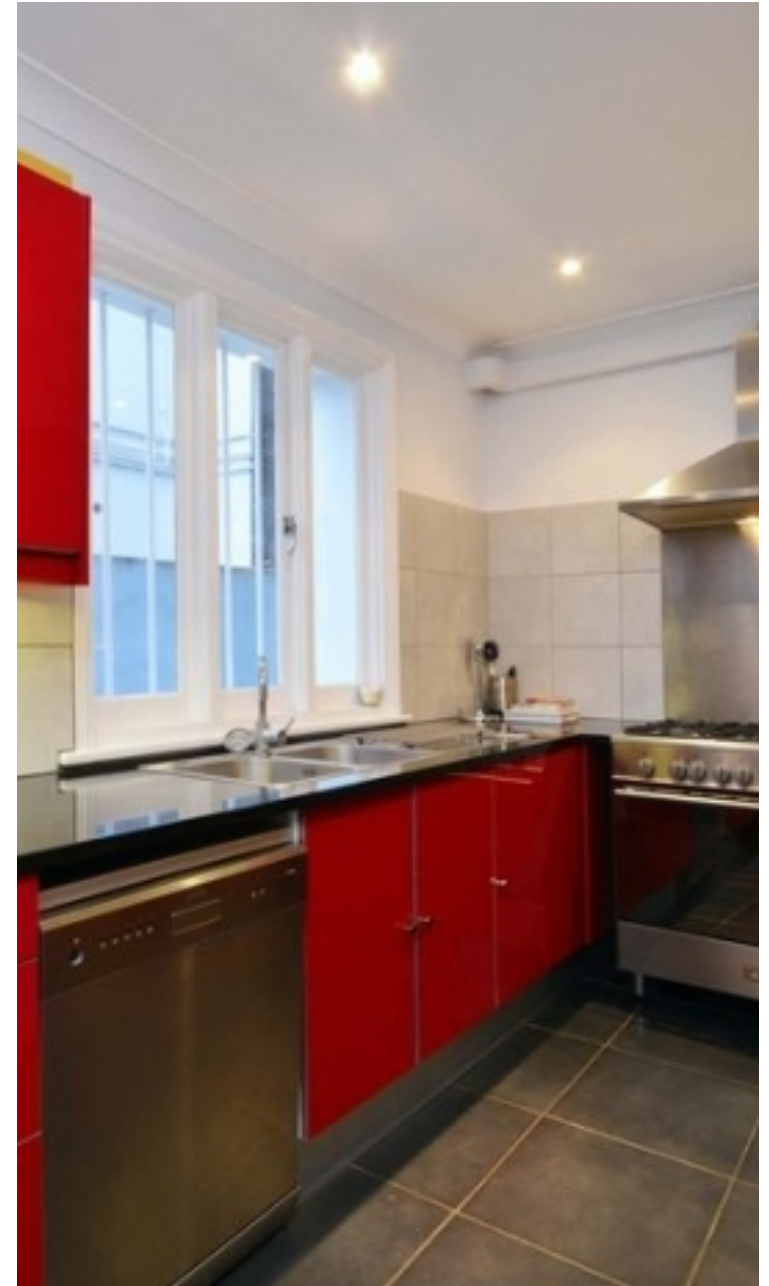
✉ oliver.kent@vitaproperties.uk
☎ +4477 7274 0351



🏠 Flat
🔑 Under
Negotiation
🛏 x 2
🛋 x 1
🚿 x 2



"I was very impressed with Vita and their network of buyers. When the sale of my flat fell through (twice) they worked extremely hard to find new buyers in a difficult market - thank you!"



"Working with Vita properties has been a smooth experience! No complaints at all. Our letting agent, Diana has been fantastic and very helpful throughout the whole process. I would highly recommend both Vita properties and Diana."



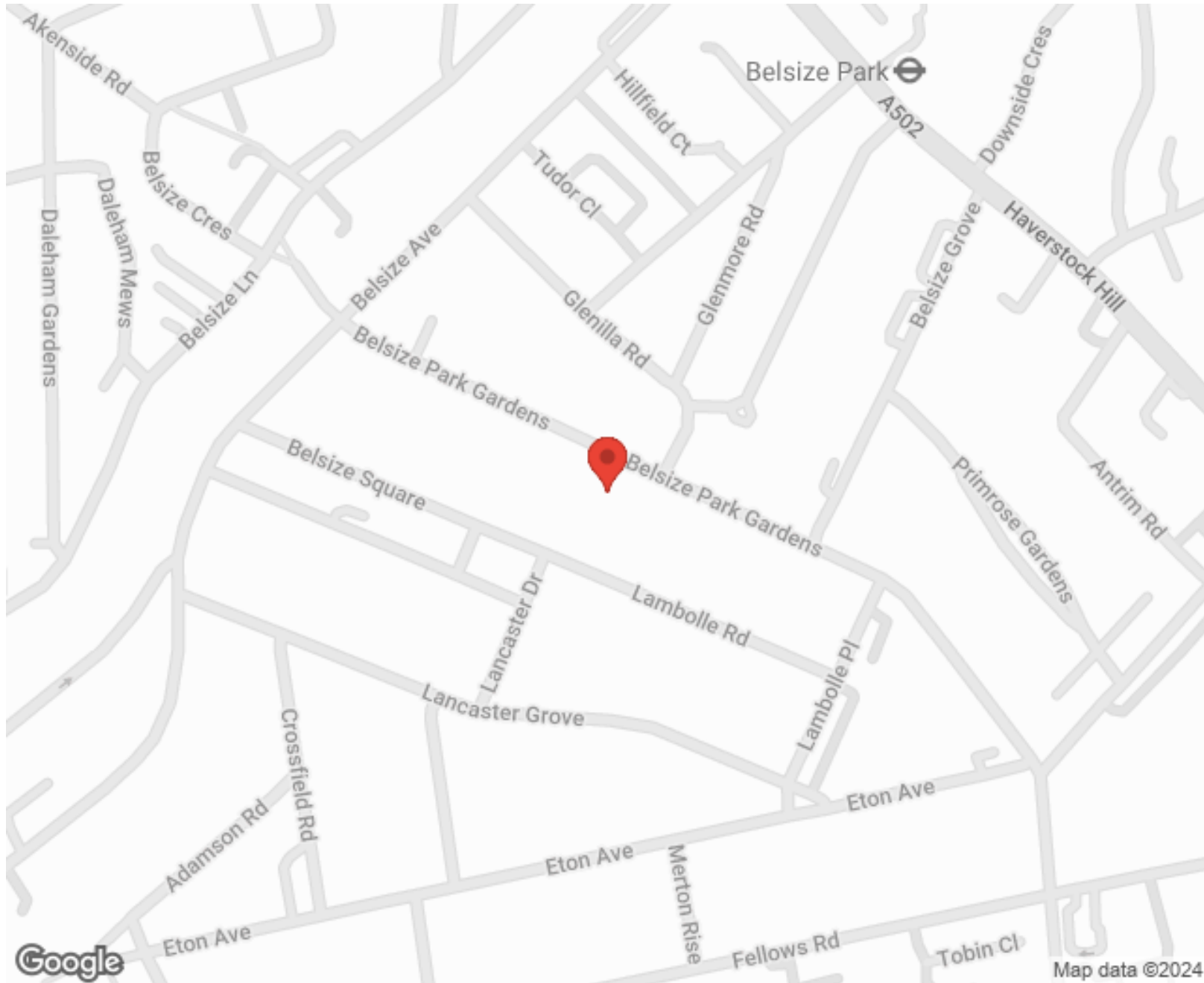
"I used Vita properties to find a flat recently and it was an overall professional, personalised and positive experience. Saira went the extra mile to accommodate to our needs and quick to help us whenever possible."



MORE INFO, PICTURES,
CONTACT ON
OUR WEBSITE



"Vita Properties is a very professional agency. My experience with them was incredible and the entire team was very helpful and kind throughout the renting process. I'd highly recommend!"



SCAN FOR MORE
GOOGLE REVIEWS




Google




4.9 Stars | 132 Reviews

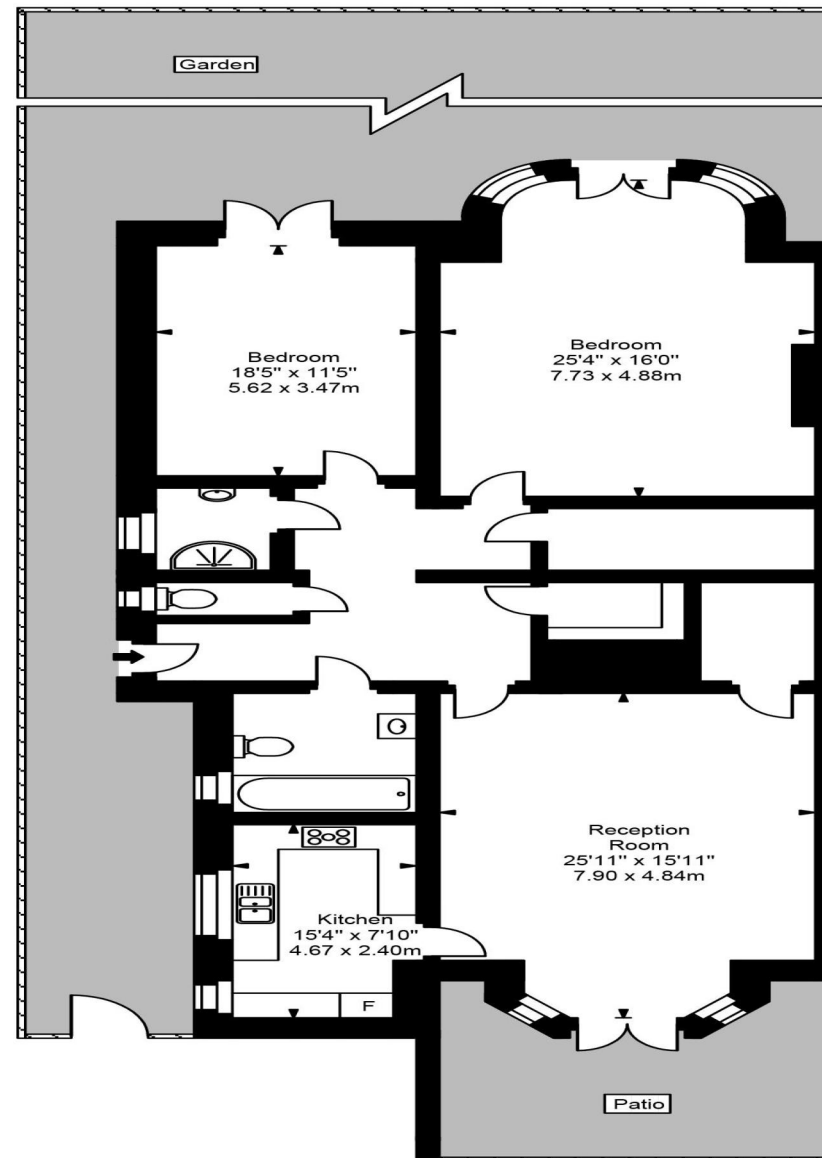
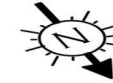
Find us on social media

 vitaproperties

 VitaProperties

 VitaProperties

Belsize Park Gardens



Ground Floor



Approx Gross Internal Area **1657 Sq Ft - 153.94 Sq M**

For Illustration Purposes Only - Not To Scale
Floor plan by www.creativeplanetlk.com