



Elm Row, Hampstead Village, London, NW3 .| £385

- Charming Georgian cottage
- Seconds to Hampstead High Street
- Moments to Tube
- Managed

- Modern
- Council tax - E - £1619 per annum
- Available 01 June 2018

"Vita Properties have been tremendously helpful throughout the process of securing/renting my flat. Informative about the property, prompt communication, easy to use dashboard for sharing of information, and pleasant to work with. Highly recommend!"

Available 01 June 2018 - A recently refurbished one bedroom terraced house located in the heart of Hampstead Village moments away from all the coffee shops and fashion boutiques on offer. Boasting a great size reception room with space for family dining this striking house further comprises separate fully functional kitchen, fantastic size bedroom will access to a full suite bathroom and ample storage throughout.

Viewing highly recommended



Oliver Kent

✉ oliver.kent@vitaproperties.uk
☎ +4477 7274 0351



🏠 House
🔑 Available
to Let
🛏 x 1
🛋 x 1
🚿 x 1



"I was very impressed with Vita and their network of buyers. When the sale of my flat fell through (twice) they worked extremely hard to find new buyers in a difficult market - thank you!"



"Working with Vita properties has been a smooth experience! No complaints at all. Our letting agent, Diana has been fantastic and very helpful throughout the whole process. I would highly recommend both Vita properties and Diana."



"I used Vita properties to find a flat recently and it was an overall professional, personalised and positive experience. Saira went the extra mile to accommodate to our needs and quick to help us whenever possible."

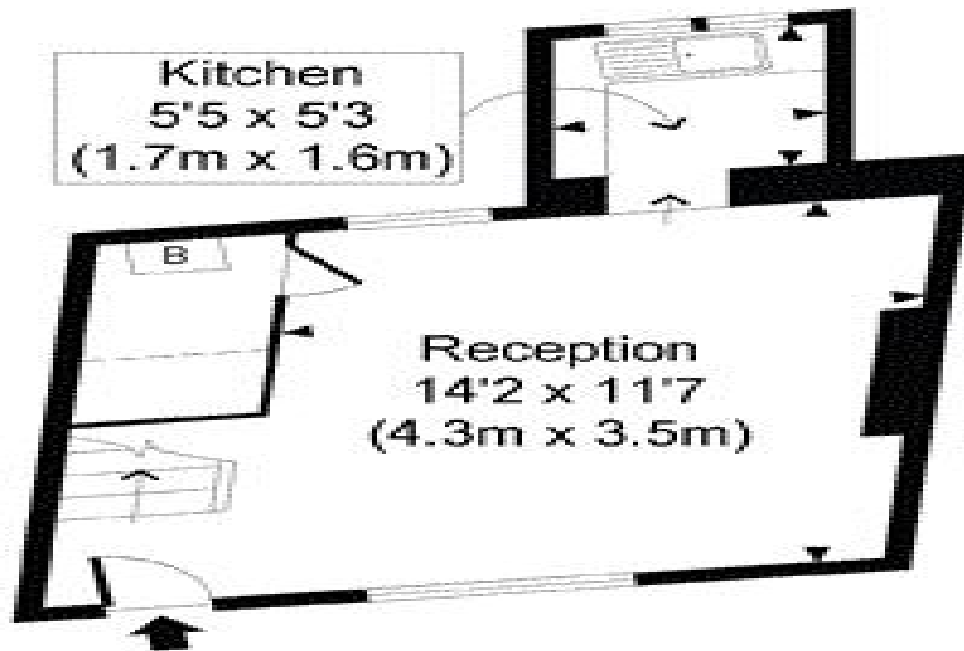


**MORE INFO, PICTURES,
CONTACT ON
OUR WEBSITE**

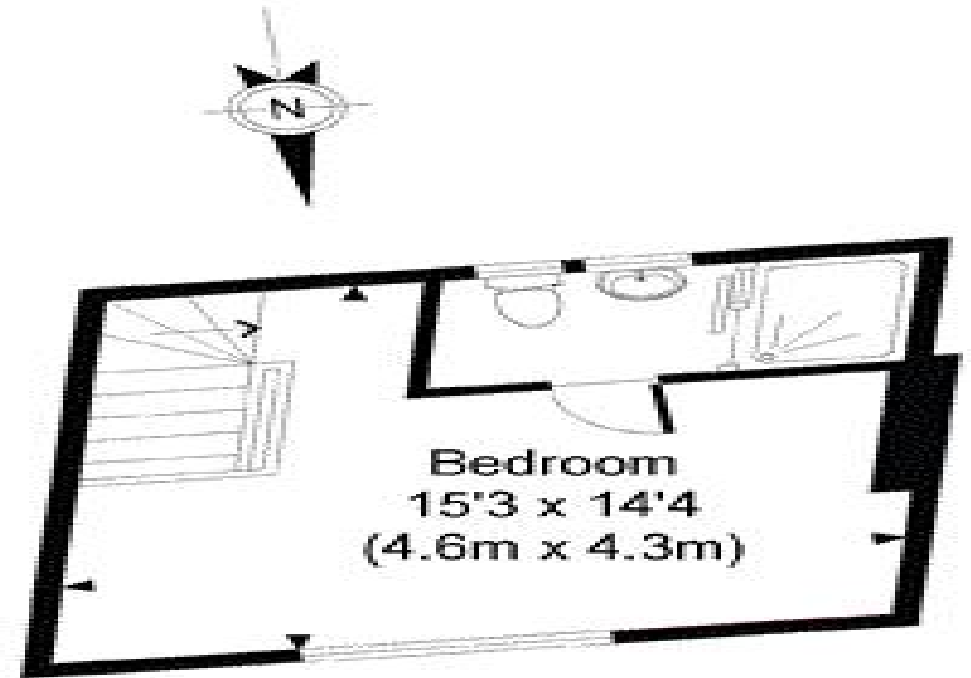


ELM ROW
NW3

Approximate gross internal area 452 sq ft - 42 sq m



Ground Floor
Gross Internal
Floor Area 234 sq ft



First Floor
Gross Internal
Floor Area 218 sq ft

----- Denotes Restricted Height

For illustrative purposes only.
Not to scale