



Priory Road, South Hampstead, London, NW6 .| £385

- One Bed, One Bath
- Period Conversion
- Large Private Roof Terrace
- Excellent Transport Links & Amenities

- Moments from Finchley Road and West End Lane
- Available Early September

"Vita Properties have been tremendously helpful throughout the process of securing/renting my flat. Informative about the property, prompt communication, easy to use dashboard for sharing of information, and pleasant to work with. Highly recommend!"

Available early September is this larger than average, one bedroom, period conversion with a private terrace.

Situated on the Raised Ground floor of a well maintained period conversion, this bright and spacious property benefits from a large double bedroom, reception, separate fitted kitchen and full bathroom. Further benefits include being located within moments of West Hampstead and Finchley Road's tube.



Oliver Kent

✉ oliver.kent@vitaproperties.uk
☎ +4477 7274 0351



🏠 Flat
🔑 Available
to Let
🛏 x 1
🛋 x 1
🚿 x 1

"I was very impressed with Vita and their network of buyers. When the sale of my flat fell through (twice) they worked extremely hard to find new buyers in a difficult market - thank you!"



"Working with Vita properties has been a smooth experience! No complaints at all. Our letting agent, Diana has been fantastic and very helpful throughout the whole process. I would highly recommend both Vita properties and Diana."



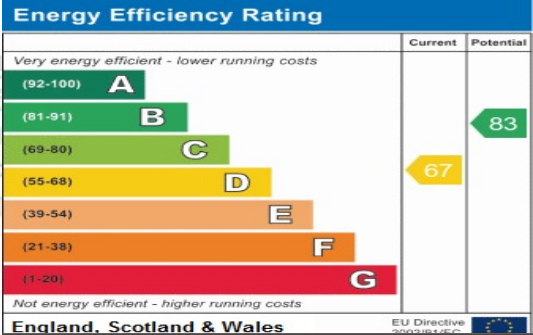
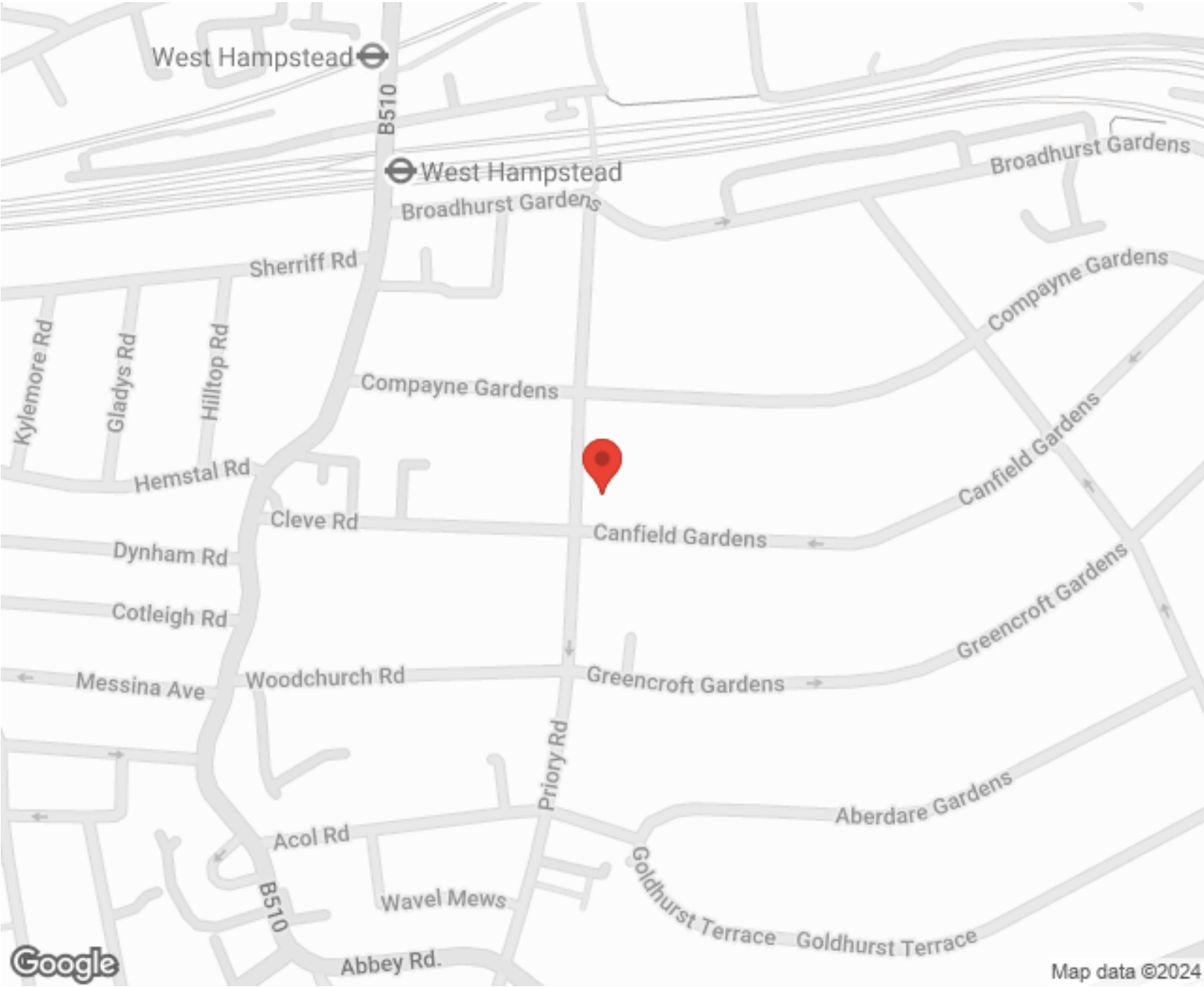
"I used Vita properties to find a flat recently and it was an overall professional, personalised and positive experience. Saira went the extra mile to accommodate to our needs and quick to help us whenever possible."



**MORE INFO, PICTURES,
CONTACT ON
OUR WEBSITE**



"Vita Properties is a very professional agency. My experience with them was incredible and the entire team was very helpful and kind throughout the renting process. I'd highly recommend!"



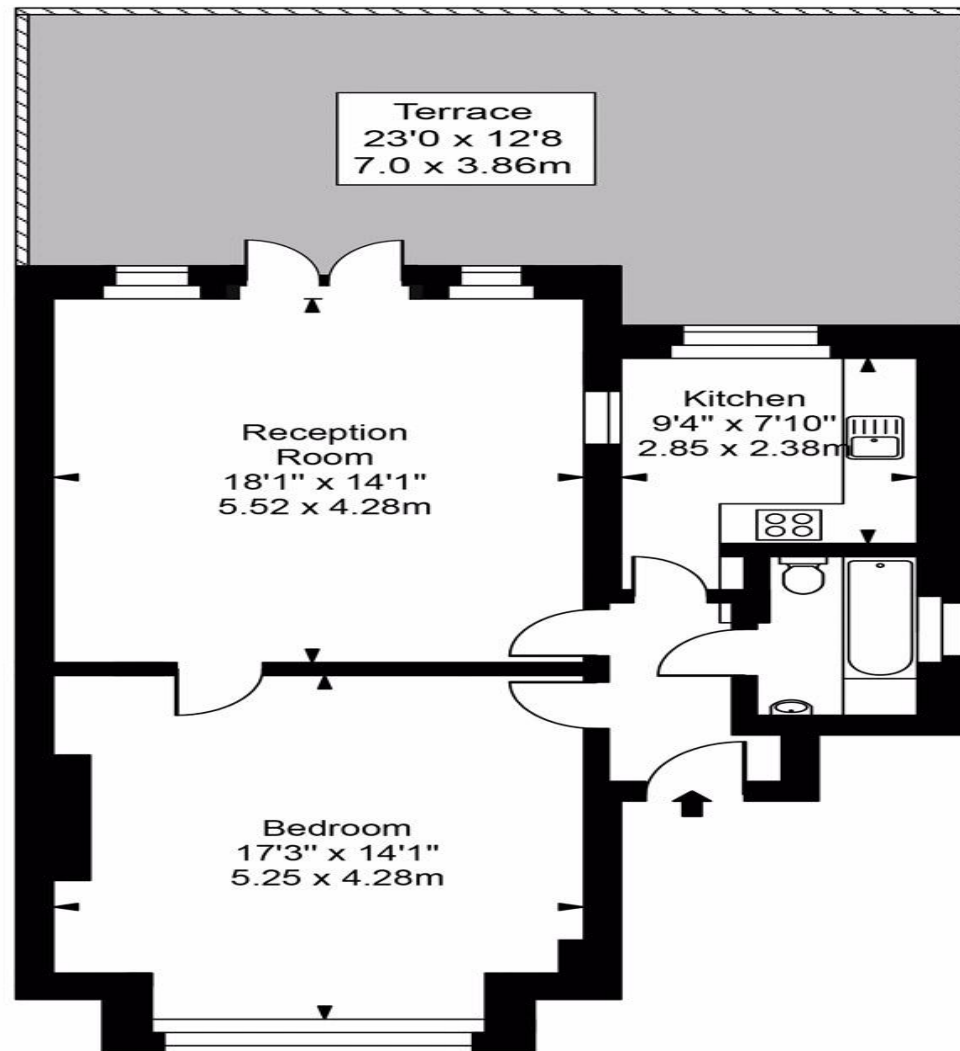
SCAN FOR MORE
GOOGLE REVIEWS

Google
★★★★★
4.9 Stars | 132 Reviews

Find us on social media

- vitaproperties
- VitaProperties
- VitaProperties

Priory Road



Ground Floor

Approx Gross Internal Area **687 Sq Ft - 63.87 Sq M**

For Illustration Purposes Only - Not To Scale
Floor plan by www.creativeplanetlk.com