



## Hamilton Terrace, St John Wood, London, NW8 .| £520

- Modern
- Wooden floors
- Newly decorated
- Large reception
- A private lock up garage
- Primrose Hill is a short stroll away
- Council tax - E - £832 per annum

"Vita Properties have been tremendously helpful throughout the process of securing/renting my flat. Informative about the property, prompt communication, easy to use dashboard for sharing of information, and pleasant to work with. Highly recommend!"

---

Fantastic one bedroom apartment set on the raised ground floor which offers ample living space with wooden floors. Situated in a period conversion, the property comprises a spacious reception room with high ceilings and large bay windows, modern kitchen, bedroom with an abundance of storage and stylish bathroom. Hamilton Terrace is a pleasant residential area moments away from the fine range of shops, bars and restaurants in St. John's Wood. Includes a lock up garage.



Oliver Kent

✉ [oliver.kent@vitaproperties.uk](mailto:oliver.kent@vitaproperties.uk)  
☎ +4477 7274 0351

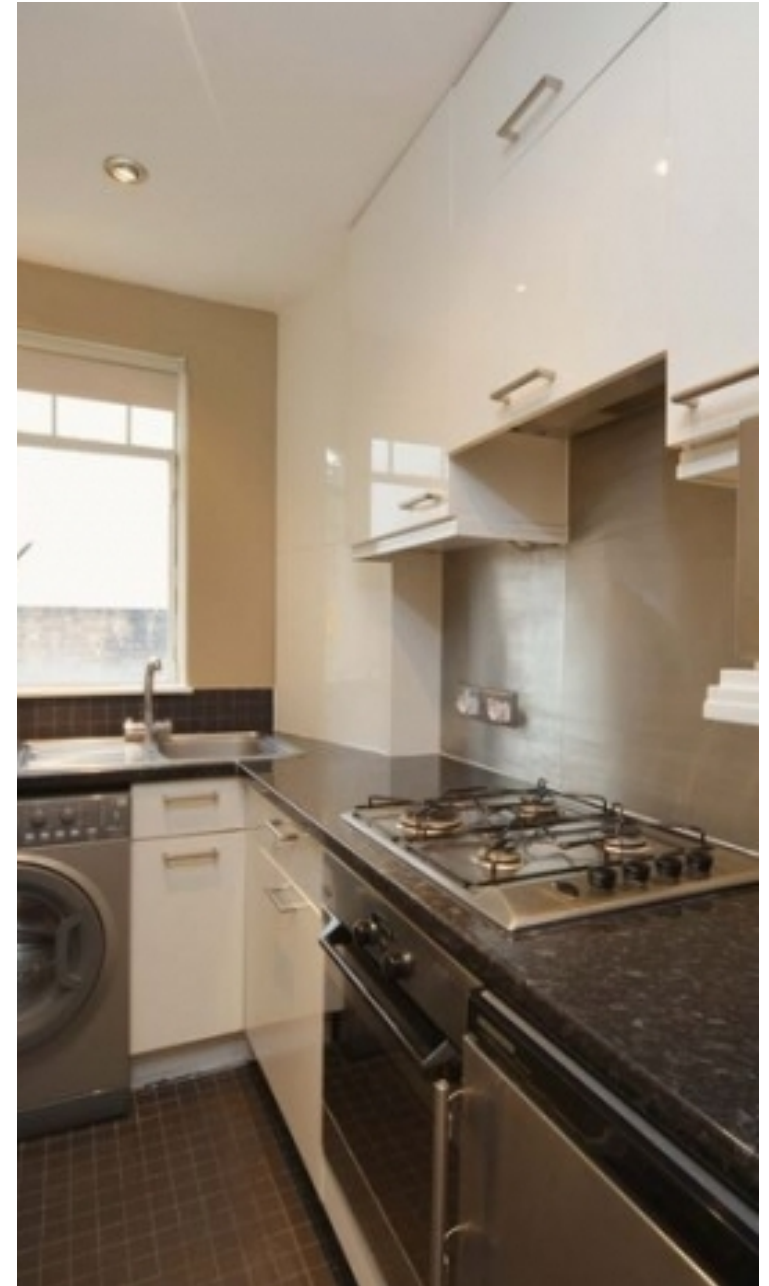


🏠 Flat  
🔑 Available  
to Let  
🛏 x 1  
🛋 x 1  
📺 x 1



"I was very impressed with Vita and their network of buyers. When the sale of my flat fell through (twice) they worked extremely hard to find new buyers in a difficult market - thank you!"

---



"Working with Vita properties has been a smooth experience! No complaints at all. Our letting agent, Diana has been fantastic and very helpful throughout the whole process. I would highly recommend both Vita properties and Diana."

---



"I used Vita properties to find a flat recently and it was an overall professional, personalised and positive experience. Saira went the extra mile to accommodate to our needs and quick to help us whenever possible."

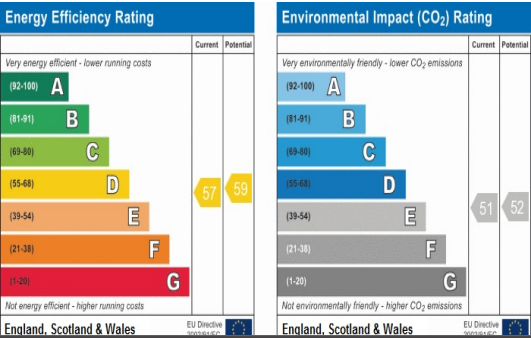
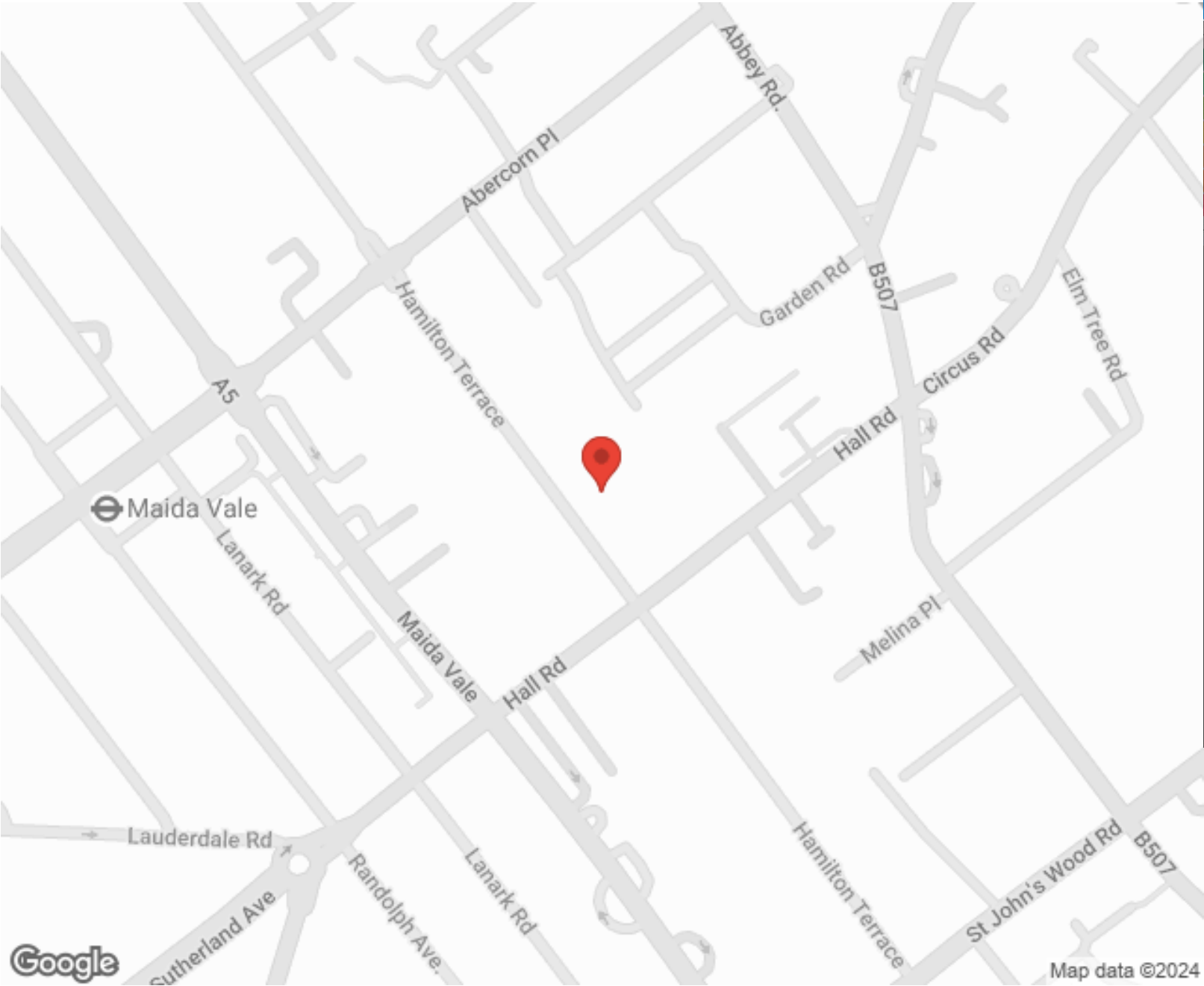
---



**MORE INFO, PICTURES,  
CONTACT ON  
OUR WEBSITE**



"Vita Properties is a very professional agency. My experience with them was incredible and the entire team was very helpful and kind throughout the renting process. I'd highly recommend!"



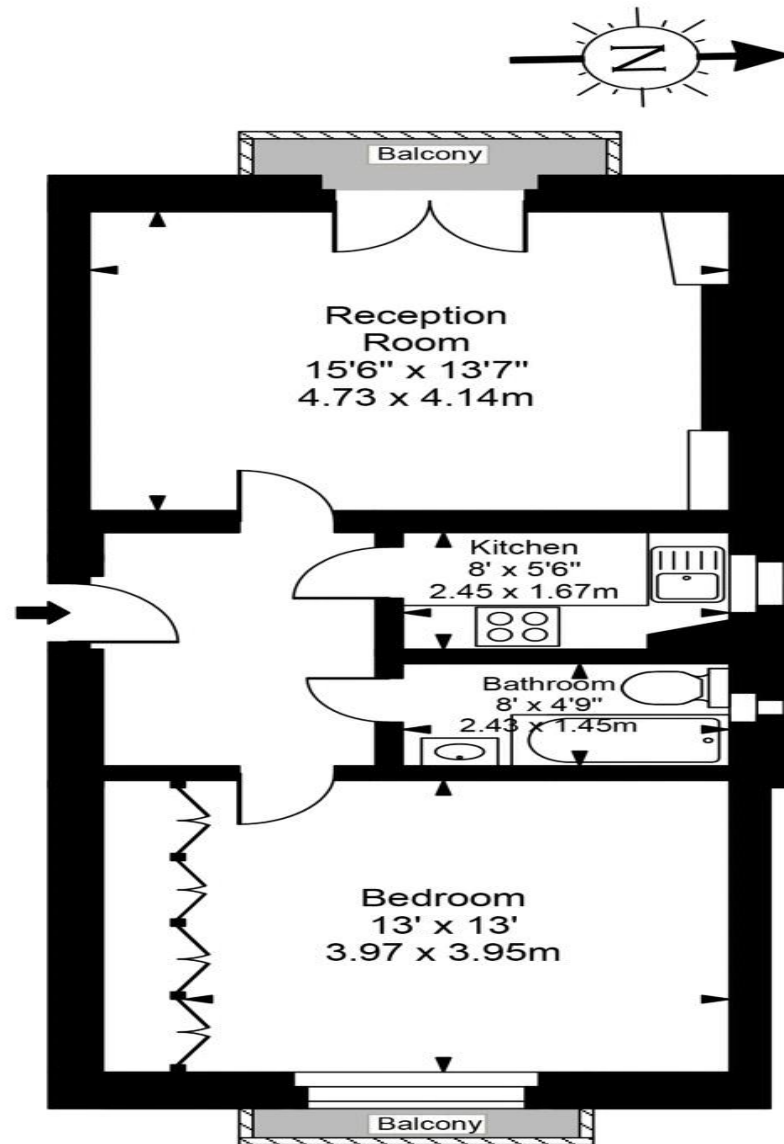
SCAN FOR MORE  
GOOGLE REVIEWS

Google  
★★★★★  
4.9 Stars | 132 Reviews

Find us on social media

- vitaproperties
- VitaProperties
- VitaProperties

## Hamilton Terrace



Ground Floor



Approx Gross Internal Area **582 Sq Ft - 54.09 Sq M**

For Illustration Purposes Only - Not To Scale  
Floor plan by [www.creativeplanetlk.com](http://www.creativeplanetlk.com)