

Cresta House, Finchley Road, Swiss Cottage, London, NW3

Monthly Rental Of £4,117



This brand-new, refurbished three-bedroom duplex apartment is located within a sought-after portered block in the heart of Swiss Cottage. Offering luxury living throughout, the property features three spacious bedrooms, a generous reception room, and direct access to three private balconies that provide stunning panoramic views to the central and northwest. The apartment also boasts a fully fitted, separate kitchen and three modern bathrooms, ensuring comfort and convenience for all residents. Additional highlights include exceptional natural light and an impeccable finish across all living spaces. Perfectly positioned just across the road from Swiss Cottage Underground Station and seconds away from a wide range of local amenities.

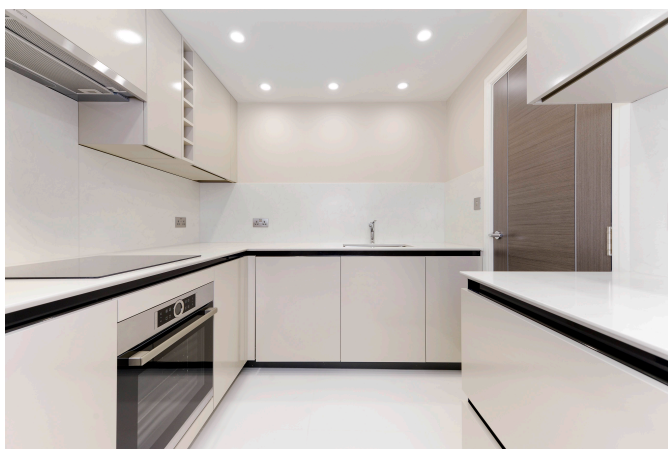
- Located Within Walking Distance To Swiss Cottage
- Managed Block
- Newly Refurbished
- Popular Portered Block
- Three Bedrooms, Three Bathrooms
- Available Immediately

Call 020 7759 2199 to view this property, or visit www.vitaproperties.uk for more details

27 Northways Parade, College Crescent, London, NW3 5DN | T: 020 7759 2199 | E: enquiries@vitaproperties.uk
We make all efforts to ensure this information is accurate, but we can't guarantee it.

Cresta House, Finchley Road, Swiss Cottage, London, NW3

Monthly Rental Of £4,117



Call 020 7759 2199 to view this property, or visit www.vitaproperties.uk for more details

27 Northways Parade, College Crescent, London, NW3 5DN | T: 020 7759 2199 | E: enquiries@vitaproperties.uk
We make all efforts to ensure this information is accurate, but we can't guarantee it.

Cresta House, Finchley Road, Swiss Cottage, London, NW3

Monthly Rental Of £4,117

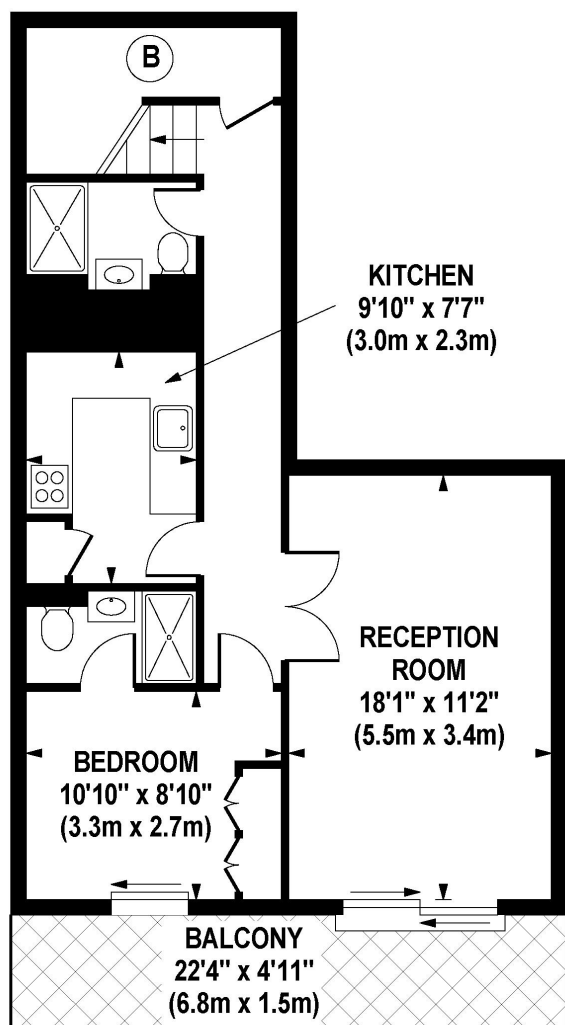


Call 020 7759 2199 to view this property, or visit www.vitaproperties.uk for more details

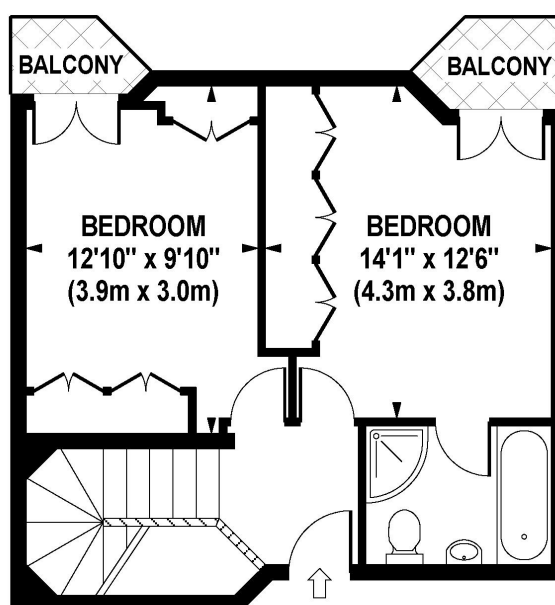
27 Northways Parade, College Crescent, London, NW3 5DN | T: 020 7759 2199 | E: enquiries@vitaproperties.uk
We make all efforts to ensure this information is accurate, but we can't guarantee it.

CRESTA HOUSE

Approximate Gross Internal Area 1060 sq ft / 98.5 sq m



**THIRD FLOOR
GROSS INTERNAL
FLOOR AREA 608 SQ FT**



**FOURTH FLOOR
GROSS INTERNAL
FLOOR AREA 452 SQ FT**

Although every attempt has been made to ensure accuracy, all measurements are approximate.
The floor plan's for illustrative purposes only and not to scale. Measured in accordance to RICS standards.

DE-PHOTOGRAPHY.NET