



Delighted to offer this wonderful two bedroom garden apartment spanning approximately 1015 square feet, situated within a converted Victorian building with wooden flooring throughout. With its own private entrance, the accommodation comprises a bright semi open plan kitchen and reception room, master bedroom with built in wardrobes and en-suite shower room, a further second bedroom and a spacious family bathroom. The location between Elgin Avenue and Sutherland Avenue is ideal to take advantage of the local amenities. These include the canals of Little Venice, Paddington Recreation Ground and the shops/cafes of Formosa Street. The property benefits from excellent local pubs and restaurants including the Waterway and the Hero of Maida pub. The property is near Warwick Avenue underground (Bakerloo), with direct trains to Paddington and the West End. Royal Oak (Circle and Hammersmith and City) and Maida Vale (Bakerloo) are both a short walk. On street resident parking is available from Westminster City Council.

- Private Garden
- Modern
- Wooden Floors
- Fully Tiled Bathroom
- Moments to Little Venice
- 8 mins walk to Warwick Avenue Tube



Shirland Road, Maida Vale, London W9

Weekly Rental Of £1,600



Call 020 7759 2199 to view this property, or visit www.vitaproperties.uk for more details

27 Northways Parade, College Crescent, London, NW3 5DN | T: 020 7759 2199 | E: enquiries@vitaproperties.uk
We make all efforts to ensure this information is accurate, but we can't guarantee it.

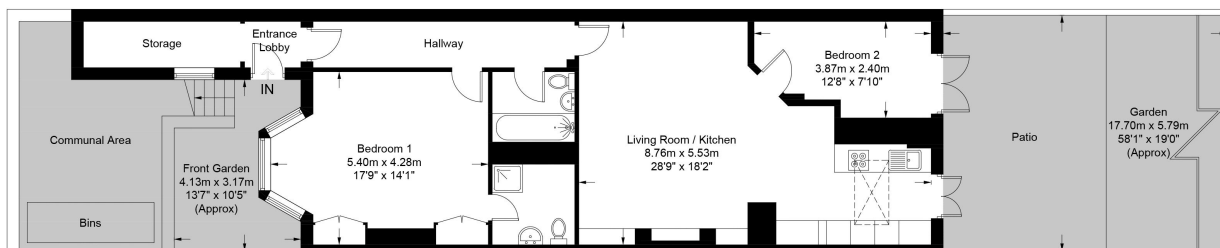
Shirland Road, Maida Vale, London W9

Weekly Rental Of £1,600



Shirland Road, W9

Approximate Gross Internal Area = 1015 sq ft / 94.3 sq m



**Certified
Property
Measurer**

This plan is for layout guidance only. Not drawn to scale unless stated. Windows and door openings are approximate. Whilst every care is taken in the preparation of this plan, please check all dimensions, shapes and compass bearings before making any decisions reliant upon them. (ID905399)

Call 020 7759 2199 to view this property, or visit www.vitaproperties.uk for more details

27 Northways Parade, College Crescent, London, NW3 5DN | T: 020 7759 2199 | E: enquiries@vitaproperties.uk
We make all efforts to ensure this information is accurate, but we can't guarantee it.