

Portman Mansions, Chiltern Street, Marylebone, London W1U

Weekly Rental Of £1,150



Situated on the fourth floor of an impressive red brick mansion block with lift access, 24 hour concierge, residents' gym and secure bike storage area. Comprising of a dual aspect open plan reception room and fitted kitchen with built in dishwasher, washing machine, fridge and freezer. The principal bedroom has built in storage and en suite shower room, second bedroom and bathroom. Gas central heating and hot water is included in the service charge. Portman Mansions is an impressive Mansion block that also benefits from a 24-hour porter service, bicycle racks, an onsite gymnasium and sauna. It is located on fashionable Chiltern Street, within easy reach of the boutique shops and restaurants of Marylebone High Street and the green, open spaces of Regent's Park

- Residents Gym
- Moments to Marylebone
- Seconds to Baker Street
- Close to the open spaces of Regent's Park
- Modern Finish
- Available 14 April 2023

Call 020 7759 2199 to view this property, or visit www.vitaproperties.uk for more details

27 Northways Parade, College Crescent, London, NW3 5DN | T: 020 7759 2199 | E: enquiries@vitaproperties.uk
We make all efforts to ensure this information is accurate, but we can't guarantee it.

Portman Mansions, Chiltern Street, Marylebone, London W1U

Weekly Rental Of £1,150



Call 020 7759 2199 to view this property, or visit www.vitaproperties.uk for more details

27 Northways Parade, College Crescent, London, NW3 5DN | T: 020 7759 2199 | E: enquiries@vitaproperties.uk
We make all efforts to ensure this information is accurate, but we can't guarantee it.

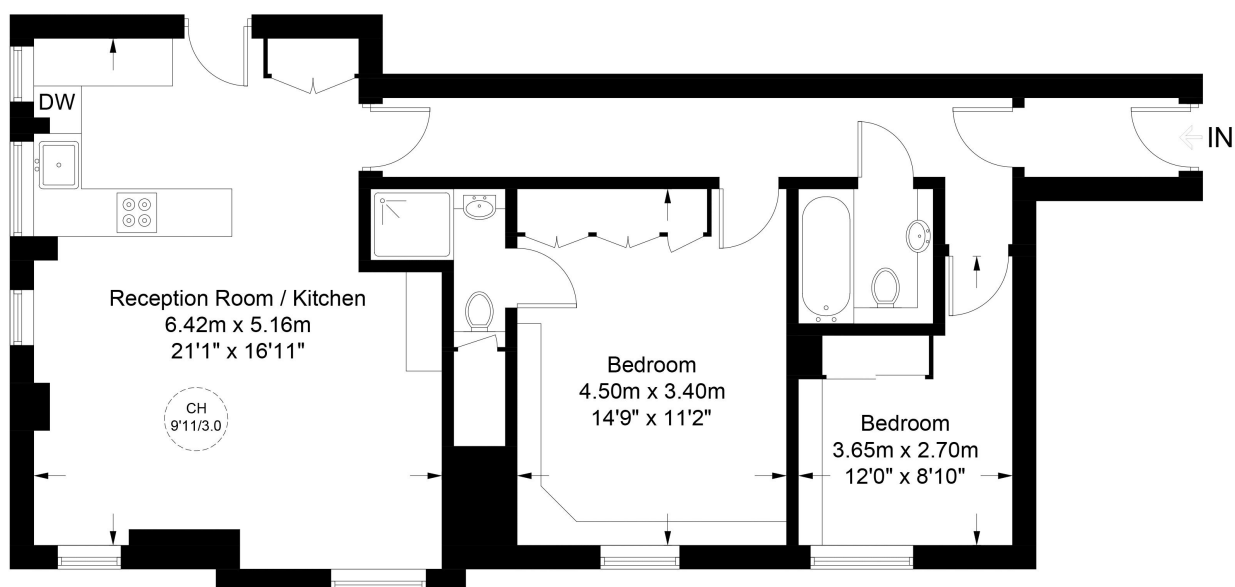
Portman Mansions, Chiltern Street, Marylebone, London W1U

Weekly Rental Of £1,150



Portman Mansions, W1U

Approximate Gross Internal Area = 818 sq ft / 76.0 sq m



Fourth Floor



**Certified
Property
Measurer**

This plan is for layout guidance only. Not drawn to scale unless stated. Windows and door openings are approximate. Whilst every care is taken in the preparation of this plan, please check all dimensions, shapes and compass bearings before making any decisions reliant upon them. (ID947178)

Call 020 7759 2199 to view this property, or visit www.vitaproperties.uk for more details

27 Northways Parade, College Crescent, London, NW3 5DN | T: 020 7759 2199 | E: enquiries@vitaproperties.uk
We make all efforts to ensure this information is accurate, but we can't guarantee it.

Portman Mansions, Chiltern Street, Marylebone,
London W1U



Weekly Rental Of £1,150

Score	Energy rating	Current	Potential
92+	A		
81-91	B		
69-80	C		75 c
55-68	D		
39-54	E	48 E	
21-38	F		
1-20	G		

Call 020 7759 2199 to view this property, or visit www.vitaproperties.uk for more details